

DRAWING INDEX

GENERAL NOTES:

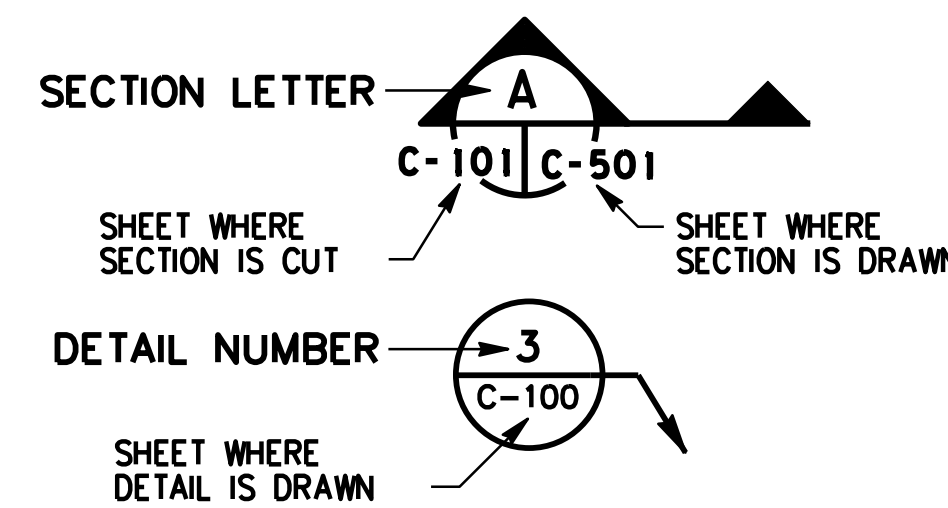
- ALL UNIMPROVED AREAS DISTURBED BY DEMOLITION OR CONSTRUCTION ACTIVITIES SHALL BE RESTORED TO PRE-DEMOLITION CONDITIONS. THIS SHALL INCLUDE SCARIFYING, GRADING, ROLLING AND SODDING OR SEEDING. CONTRACTOR SHALL BE RESPONSIBLE FOR INSTALLING AND MAINTAINING TEMPORARY IRRIGATION FACILITIES FOR 6 WEEKS. SOD OR SEEDING AREAS NOT FULLY RESTORED BY THE END OF THIS PERIOD, SHALL BE RESODDED OR SEEDING AND THE MAINTENANCE PERIOD RESET.
- IMPROVED AREAS DISTURBED BY DEMOLITION OR CONSTRUCTION ACTIVITIES SHALL BE RESTORED TO PRE-DEMOLITION CONDITIONS OR BETTER. CONCRETE ASPHALT REPLACEMENT SHALL BE IN ACCORDANCE WITH THE APPLICABLE SPECIFICATION SECTION.
- ALL ELEVATIONS ARE BASED UPON MEAN SEA LEVEL, 1929 N.G.V.D.
- LOCATIONS, ELEVATIONS AND DIMENSIONS OF EXISTING UTILITIES, STRUCTURES AND OTHER FEATURES ARE SHOWN ACCORDING TO THE BEST INFORMATION AVAILABLE AT THE TIME OF THE PREPARATION OF THESE PLANS, BUT DOES NOT PURPORT TO BE ABSOLUTELY CORRECT. THE CONTRACTOR SHALL VERIFY THE LOCATIONS, ELEVATIONS AND DIMENSIONS OF ALL EXISTING UTILITIES AND OTHER FEATURES AFFECTING THE WORK PRIOR TO DEMOLITION.
- WHERE THE CONTRACTOR ENCOUNTERS UTILITY CONFLICTS, THE CONTRACTOR HAS THE OPTION OF RELOCATING THE UTILITY, WITH PERMISSION AND COORDINATION OF THE UTILITY OWNER, OR DEVIATING THE NEW MAIN, HOWEVER, FOR ANY SUBSTANTIAL PROPOSED DEVIATION OF THE NEW MAIN FROM THE DRAWINGS, THE ENGINEER AND OWNER SHALL BE NOTIFIED IN ADVANCE FOR REVIEW.
- IT IS THE RESPONSIBILITY OF THE CONTRACTOR TO CONTACT FLORIDA POWER AND LIGHT OR OTHER UTILITY OWNER FOR POWER SERVICE COORDINATION AND FOR RESTRAINING OF POLES DURING DEMOLITION. ALL ASSOCIATED COSTS WILL BE AT CONTRACTORS EXPENSE.
- WORK SHALL BE SCHEDULED FROM 8 A.M. TO 5 P.M. MONDAY THROUGH FRIDAY. NO WORK SHALL BE PERFORMED ON WEEKENDS OR HOLIDAYS, OR PRIOR TO OR AFTER 8 A.M. TO 5 P.M. WITHOUT 48 HOURS ADVANCE NOTICE AND WRITTEN AUTHORIZATION FROM THE TOWN OF LONGBOAT KEY. OVERTIME AND ADDED INSPECTION SHALL BE AT CONTRACTORS EXPENSE.
- NO CUTTING, CLEARING, GRADING OR FILLING SHALL BE ACCOMPLISHED UNLESS APPROPRIATE DEVICES HAVE BEEN INSTALLED TO MINIMIZE POLLUTION FROM OBJECTIONABLE MATERIALS, TO CONTROL EROSION AND TO REMOVE SEDIMENT FROM SURFACE WATER RUNOFF.
- ALL EROSION CONTROL SHALL BE MAINTAINED BY THE CONTRACTOR IN COMPLIANCE WITH FDOT, SARASOTA COUNTY, TOWN OF LONGBOAT KEY AND SOUTHWEST FLORIDA WATER MANAGEMENT DISTRICT REQUIREMENTS THROUGHOUT THE DURATION OF THE PROJECT. CONTRACTOR SHALL INSPECT EROSION CONTROL DAILY AND WITHIN 24 HOURS AFTER EACH RAINFALL EVENT OF 1 INCH OR GREATER. ALL NECESSARY MAINTENANCE SHALL BE PERFORMED WITHIN 24 HOURS AFTER INSPECTION. CONTRACTOR SHALL SUBMIT NOI FOR COMPLIANCE WITH MSSW PERMIT FLS000004. (SEE SPECIFICATIONS)
- CONTRACTOR SHALL REPORT ALL OFFSITE SURFACE WATER DISCHARGES IMPACTED BY PROJECT WORK WITH TURBIDITY IN EXCESS OF 29 NTU'S ABOVE BACKGROUND LEVEL TO POLLUTION CONTROL WITHIN 24 HOURS AFTER OCCURRENCE. NOTIFICATION SHALL INCLUDE REASONS FOR THE OCCURRENCE, MEASURES TAKEN TO CORRECT THE PROBLEM AND REPAIRS MADE TO THE TEMPORARY EROSION/SEDIMENT CONTROLS. INSTALLATION OF ADDITIONAL CONTROLS NOT ALREADY SHOWN ON THE APPROVED DEMOLITION PLAN DRAWINGS SHALL ALSO BE REPORTED TO POLLUTION CONTROL.
- CONTRACTOR SHALL REPORT ANY FUEL OR OTHER PETROLEUM PRODUCT SPILL GENERATED FROM DEMOLITION/HEAVY EQUIPMENT OPERATIONS WITHIN 24 HOURS AFTER OCCURRENCE. SPILLS IN EXCESS OF 25 GALLONS OR THOSE THAT ENTER STORM WATER DRAINAGES OR WATER BODIES, SHALL BE CONTAINED, CLEANED UP AND REPORTED TO THE FDEP AND THE TOWN OF LONGBOAT KEY IMMEDIATELY. SMALLER SURFACE SPILLS SHALL BE CLEANED UP WITHIN 24 HOURS.
- WIND BORNE DUST AND NOISE LEVELS GENERATED DURING DEMOLITION SHALL COMPLY WITH THE REQUIREMENTS OF THE AIR AND NOISE POLLUTION CONTROL CODE (TOWN OF LONGBOAT KEY CODE OF ORDINANCES, CHAPTER 130).
- THE FLOW OF STORM WATER WITHIN THE DRAINAGE FACILITIES SHALL REMAIN UNIMPEDED. ADEQUATE MEASURES WILL BE TAKEN TO PREVENT POLLUTION OF WATER IN THE AREA FROM RUN-OFF AND POLLUTION OF THE AIR FROM DUST, DURING THE COURSE OF CONSTRUCTION AND RESTORATION.
- DEBRIS TO BE REMOVED SHALL BE TRANSPORTED AND DISPOSED OF AT AN APPROVED SITE.
- ANY PUBLIC OR PRIVATE PROPERTY WHICH IS USED OR AFFECTED BY THE CONTRACTOR WILL BE MAINTAINED AND PRESERVED FROM DAMAGE DURING THE OPERATION, AND RESTORED TO ITS ORIGINAL CONDITION UPON COMPLETION OR CESSATION OF WORK. SURFACE FEATURES SHALL BE RESTORED TO EQUAL OR BETTER CONDITIONS THAN BEFORE DEMOLITION, INCLUDING SIDEWALKS, CURBS, GUTTERS, DRIVEWAYS, ROADWAYS, FENCES AND OTHER EXISTING ITEMS.
- THE CONTRACTOR SHALL BE RESPONSIBLE FOR THE DISPOSAL OF ALL CLEARED VEGETATION WITHIN FIVE (5) DAYS OF CLEARING AND GRUBBING WORK.
- CONTRACTOR TO INSTALL COPPER TRACER WIRE ALONG ENTIRE LENGTH OF PIPE.
- PIPE DIAMETERS SHOWN ON DRAWINGS ARE INSIDE DIAMETER (ID) MEASUREMENTS FOR NEW PIPE.
- SIDEWALK DETOURS MUST BE PROVIDED FOR PUBLIC SAFETY AND MUST FOLLOW FDOT REQUIREMENTS FOR MAINTENANCE OF TRAFFIC.
- CONTRACTOR MUST COMPLY WITH FDOT UTILITY ACCOMMODATION MANUAL, AUGUST 2004, AS THIS PROJECT IS WITHIN FDOT RIGHT-OF-WAY.
- OFFSETS SHOWN ARE MINIMUM DISTANCES BETWEEN EXISTING, ACTUAL EDGE OF PAVEMENT SHOULDER AND CENTERLINE OF PROPOSED WATER PIPELINE.

LEGEND, SYMBOLS AND ABBREVIATIONS

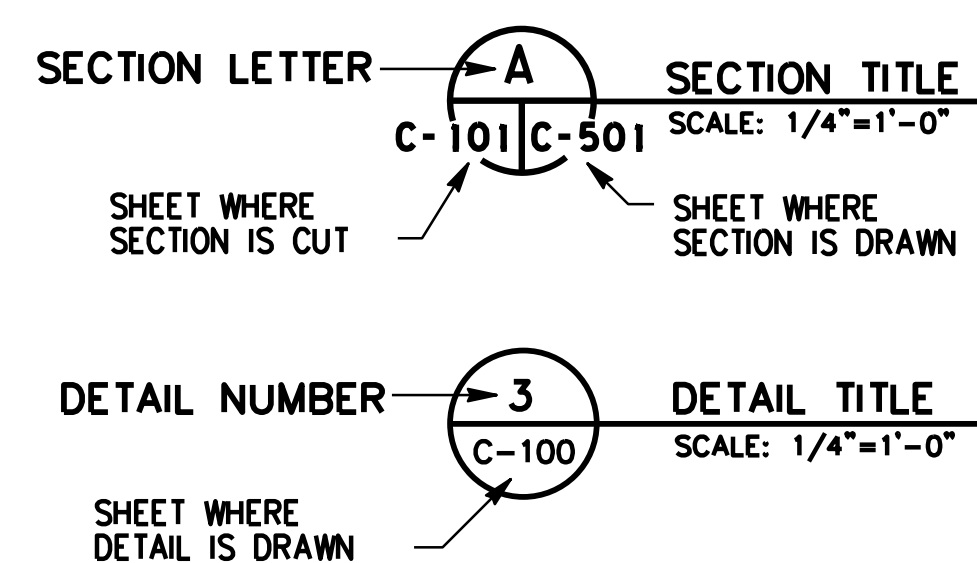
POC POINT OF COMMENCEMENT	(M) MEASURED	☐ CABLE T.V. BOX/RISER CENTER LINE	— G — GAS VALVE	⊙ TELEPHONE MANHOLE
POB POINT OF BEGINNING	(C) CALCULATED	☐ CLEAN OUT	GVO GAS VALVE	☐ TELEPHONE BOX/RISER
FIP FOUND IRON PIPE	(F) FIELD	CHW CONCRETE HEAD WALL	INV INVERT ELEVATION	⊙ TOP OF GRATE
FIR FOUND IRON ROD	PB PLAT BOOK	CMP CORRUGATED METAL PIPE	OIV IRRIGATION VALVE	⊙ TRAFFIC LIGHT
SIR SET 5/8" IRON ROD WITH CAP, L.B.# 5151	PG PAGE	CPP CORRUGATED PLASTIC PIPE	LP* LIGHT POLE	⊙ UNDERGROUND TELEVISION FACILITIES
FCM FOUND CONCRETE MONUMENT	OR OFFICIAL RECORDS BOOK	⊙ DRAINAGE MANHOLE	ME MITERED PIPE END	TR TRASH RECEPTACLE
SCM SET CONCRETE MONUMENT WITH ALUMINUM DISK, L.B.# 5151	—ROW— RIGHT-OF-WAY	⊙ ELECTRIC MANHOLE	MM F.D.O.T. MILE MARKER	TS TRAFFIC SIGNAL UNDERGROUND
FPK FOUND PARKER KALON NAIL	EOP EDGE OF PAVEMENT	⊙ ELECTRIC SERVICE/METER	RM F.D.O.T. MILE MARKER	UB TRANSFORMER ON PAD
SPK SET PARKER KALON NAIL WITH BRASS DISK, L.B.# 5151	D.U.E. DRAINAGE and/or UTILITY EASEMENT	FH FIRE HYDRANT	RCP REINFORCED CONCRETE PIPE	UC UNDERGROUND
FDH FOUND DRILL HOLE	LB LICENSED BUSINESS AND MAPPER	FM FORCE MAIN	RIM RIM ELEVATION	UP UTILITY POLE WOOD
SDH SET DRILL HOLE	PSM PROFESSIONAL SURVEYOR	F.D.O.T. FLORIDA DEPARTMENT OF TRANSPORTATION	S SIGN	UP UTILITY POLE CONCRETE
FMN FOUND MAG NAIL	A/C AIR CONDITIONING UNIT	—FPL— FLORIDA POWER AND LIGHT UNDERGROUND FACILITIES	S---S--- SANITARY MAIN/LATERAL	VZ VERIZON UNDERGROUND FACILITIES
FND FOUND	BFP BACK FLOW PREVENTOR	☐ GAS RISER/METER	⊙ SANITARY MANHOLE	VC VITRIFIED CLAY PIPE
(P) PLAT	---BST--- BELL SOUTH UNDERGROUND TELEPHONE FACILITIES	---GTE--- GENERAL TELEPHONE & ELECTRIC UG TELEPHONE FACILITIES	⊙ TRAFFIC SIGNAL BOX	W(E) WATER MAIN SERVICE (EXISTING)
CI CAST IRON PIPE			SPC STATE PLANE COORDINATE	W(M) WATER METER (EXISTING)
ACP ASBESTOS CONCRETE PIPE			SV SEWER VALVE	WV WATER VALVE (EXISTING)

DRAFTING SYMBOLOGY

IN PLAN AND PROFILE



ON SECTION/DETAIL SHEETS



GENERAL DRAWINGS-

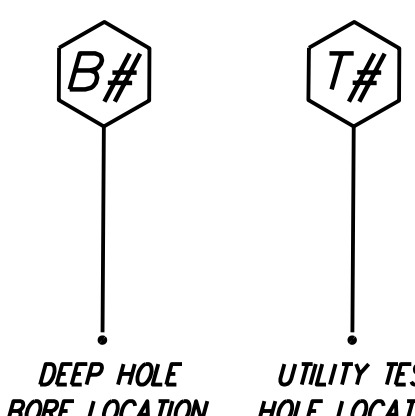
- | | |
|---------|---|
| 1 of 55 | PROJECT COVER SHEET |
| 2 of 55 | G-001 DRAWING INDEX, GENERAL CONSTRUCTION NOTES, LEGEND AND SYMBOLS |
| 3 of 55 | G-100 COMPREHENSIVE EXISTING SURVEY PLAN WITH AERIAL |

CIVIL DRAWINGS-

- | | | |
|----------|--------|---|
| 4 of 55 | C-100 | COMPREHENSIVE PROJECT PLAN |
| 5 of 55 | C-101 | WATER LINE PLAN & PROFILE STA 00+00 TO 06+00 |
| 6 of 55 | C-102 | WATER LINE PLAN & PROFILE STA 06+00 TO 12+00 |
| 7 of 55 | C-103 | WATER LINE PLAN & PROFILE STA 12+00 TO 18+00 |
| 8 of 55 | C-104 | WATER LINE PLAN & PROFILE STA 18+00 TO 24+00 |
| 9 of 55 | C-105 | WATER LINE PLAN & PROFILE STA 24+00 TO 30+00 |
| 10 of 55 | C-106 | WATER LINE PLAN & PROFILE STA 30+00 TO 36+00 |
| 11 of 55 | C-107 | WATER LINE PLAN & PROFILE STA 36+00 TO 42+00 |
| 12 of 55 | C-108 | WATER LINE PLAN & PROFILE STA 42+00 TO 48+00 |
| 13 of 55 | C-108D | WATER LINE PLAN & PROFILE STA 42+00 TO 48+00 -DD OPTION 1 |
| 14 of 55 | C-109 | WATER LINE PLAN & PROFILE STA 48+00 TO 54+00 |
| 15 of 55 | C-109D | WATER LINE PLAN & PROFILE STA 48+00 TO 54+00 -DD OPTION 1 |
| 16 of 55 | C-110 | WATER LINE PLAN & PROFILE STA 54+00 TO 60+00 |
| 17 of 55 | C-110D | WATER LINE PLAN & PROFILE STA 54+00 TO 60+00 -DD OPTION 1 |
| 18 of 55 | C-111 | WATER LINE PLAN & PROFILE STA 60+00 TO 66+00 |
| 19 of 55 | C-112 | WATER LINE PLAN & PROFILE STA 66+00 TO 72+00 |
| 20 of 55 | C-113 | WATER LINE PLAN & PROFILE STA 72+00 TO 78+00 |
| 21 of 55 | C-114 | WATER LINE PLAN & PROFILE STA 78+00 TO 84+00 |
| 22 of 55 | C-115 | WATER LINE PLAN & PROFILE STA 84+00 TO 90+00 |
| 23 of 55 | C-116 | WATER LINE PLAN & PROFILE STA 90+00 TO 96+00 |
| 24 of 55 | C-117 | WATER LINE PLAN & PROFILE STA 96+00 TO 102+00 |
| 25 of 55 | C-118 | WATER LINE PLAN & PROFILE STA 102+00 TO 108+00 |
| 26 of 55 | C-119 | WATER LINE PLAN & PROFILE STA 108+00 TO 114+00 |
| 27 of 55 | C-119D | WATER LINE PLAN & PROFILE STA 108+00 TO 114+00 -DD OPTION 2 |
| 28 of 55 | C-120 | WATER LINE PLAN & PROFILE STA 114+00 TO 120+00 |
| 29 of 55 | C-120D | WATER LINE PLAN & PROFILE STA 114+00 TO 120+00 -DD OPTION 2 |
| 30 of 55 | C-121 | WATER LINE PLAN & PROFILE STA 120+00 TO 126+00 |
| 31 of 55 | C-122 | WATER LINE PLAN & PROFILE STA 126+00 TO 132+00 |
| 32 of 55 | C-123 | WATER LINE PLAN & PROFILE STA 132+00 TO 138+00 |
| 33 of 55 | C-124 | WATER LINE PLAN & PROFILE STA 138+00 TO 144+00 |
| 34 of 55 | C-125 | WATER LINE PLAN & PROFILE STA 144+00 TO 150+00 |
| 35 of 55 | C-126 | WATER LINE PLAN & PROFILE STA 150+00 TO 156+00 |
| 36 of 55 | C-127 | WATER LINE PLAN & PROFILE STA 156+00 TO 162+00 |
| 37 of 55 | C-127T | WATER LINE PLAN & PROFILE STA 156+00 TO 162+00 -12" EXIST'G TIE-IN OPTION 3 |
| 38 of 55 | C-128 | WATER LINE PLAN & PROFILE STA 162+00 TO 168+00 |
| 39 of 55 | C-128T | WATER LINE PLAN & PROFILE STA 162+00 TO 168+00 -12" EXIST'G REUSE OPTION 3 |
| 40 of 55 | C-129 | WATER LINE PLAN & PROFILE STA 168+00 TO 174+00 |
| 41 of 55 | C-129T | WATER LINE PLAN & PROFILE STA 168+00 TO 174+00 -12" EXIST'G TIE-IN OPTION 3 |
| 42 of 55 | C-130 | WATER LINE PLAN & PROFILE STA 174+00 TO 178+50 |
| 43 of 55 | C-501 | TYPICAL PIPING AND EQUIPMENT INSTALLATION DETAILS I |
| 44 of 55 | C-502 | TYPICAL PIPING AND EQUIPMENT INSTALLATION DETAILS II |
| 45 of 55 | C-503 | TYPICAL PIPING AND EQUIPMENT INSTALLATION DETAILS III |
| 46 of 55 | C-601 | TYPICAL CROSS SECTIONS I |
| 47 of 55 | C-602 | TYPICAL CROSS SECTIONS II |
| 48 of 55 | C-701 | FDOT DETAILS 100 & 102 PG 1-3 |
| 49 of 55 | C-702 | FDOT DETAILS 103, 105, & 300 |
| 50 of 55 | C-703 | FDOT DETAILS 307 PG 1-3 & 310 PG 1 |
| 51 of 55 | C-704 | FDOT DETAILS 310 PG 2 & 600 PG 1-3 |
| 52 of 55 | C-705 | FDOT DETAILS 600 PG 4-7 |
| 53 of 55 | C-706 | FDOT DETAILS 600 PG 8-11 |
| 54 of 55 | C-707 | FDOT DETAILS 600 PG 12 & 601, 602, 603 PG 1 |
| 55 of 55 | C-708 | FDOT DETAILS 603 PG 2 & 604, 605, 307 |

NEW PIPING AND EQUIPMENT

- WM — NEW WATER MAIN SERVICE (PVC-OPEN TRENCH)
- WM(DI) --- NEW WATER MAIN SERVICE (DI-OPEN TRENCH)
- WM(DD) — NEW WATER MAIN SERVICE (HDPE-DIRECT DRILLED)
- ⊗ WATER VALVE (NEW) ISOLATION GATE VALVE
- ⊕ TEE (NEW)
- ⊕ ELBOW (NEW)
- ⊕ AIR RELIEF VALVE



SEE CONTRACT SPECIFICATIONS FOR DETAILED INFORMATION REGARDING SOILS AND UTILITY LOCATIONS DETERMINED FOR THIS PROJECT.

Laura S. Andrews, P.E.
Florida PE 47683

Date:

DRWG. NO:

G-001

SHT. 2 OF 55

DRAWING SIZE 24" x 36" - USE GRAPHIC SCALE OTHERWISE.

DESIGNED BY: NO.	PROJECT MANAGER:	FILE NAME:	ACCOUNT:
LSATON	LAURA S. ANDREWS, PE	LBK_MTR_G-001.DWG	
DRAWN BY:		DATE:	
ABE		10/11/08	
ENGINEERING VISIONS, INC. PARTNERSHIP 4650 BAYVIEW BLVD., SUITE 210 WOODLAND, FLORIDA 32091 PH: (904) 412-9187 FAX: (904) 412-9273 FL COAH 20755 FL COAH 27192 PH: (904) 870-5449			
UPSIZE POTABLE WATER TRANSMISSION MAIN TOWN OF LONGBOAT KEY, SARASOTA COUNTY, FLORIDA			

DRAWING INDEX, GENERAL CONSTRUCTION NOTES, LEGEND AND SYMBOLS