

MATCHLINE - REFER C-126

MATCHLINE - REFER C-126

MATCHLINE - REFER C-126

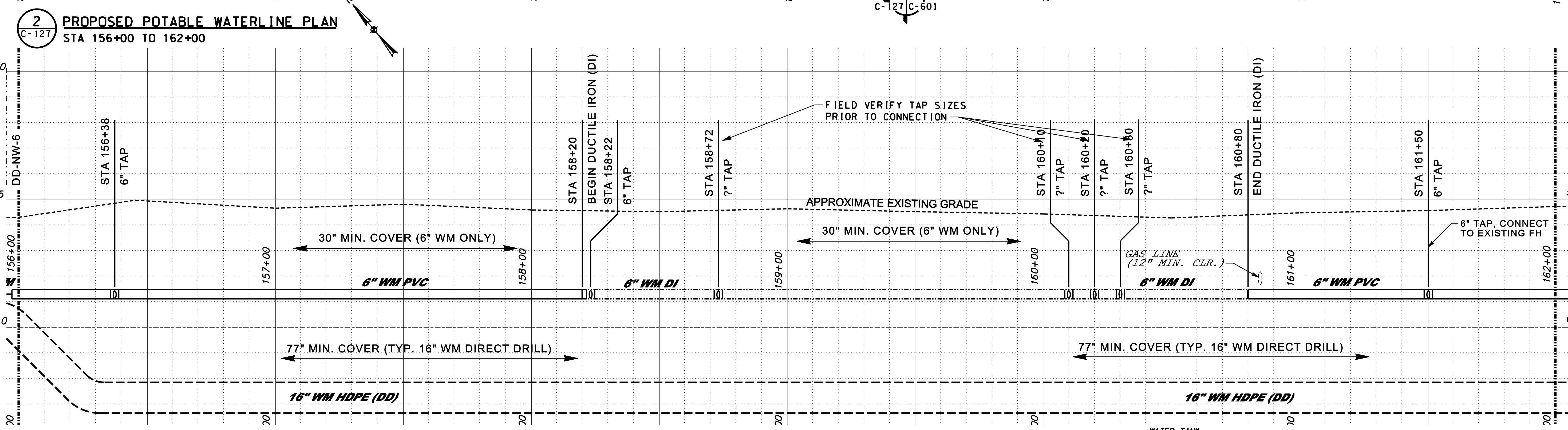
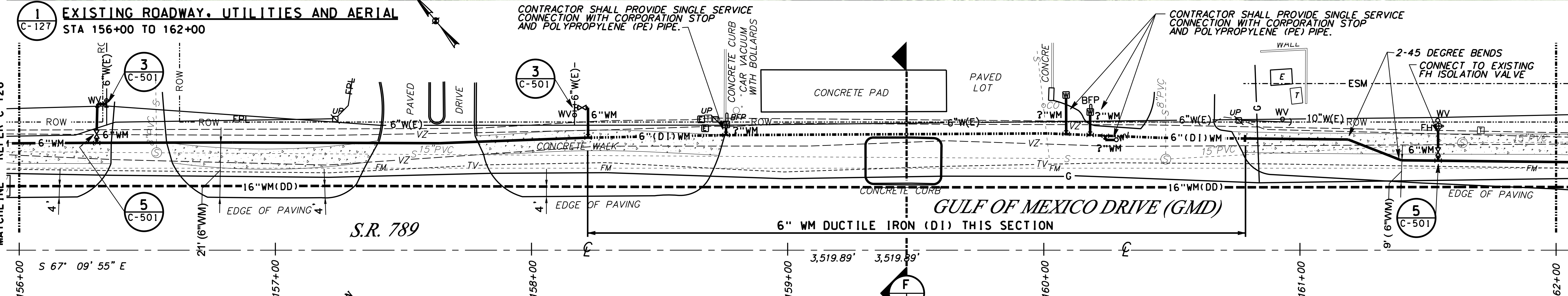
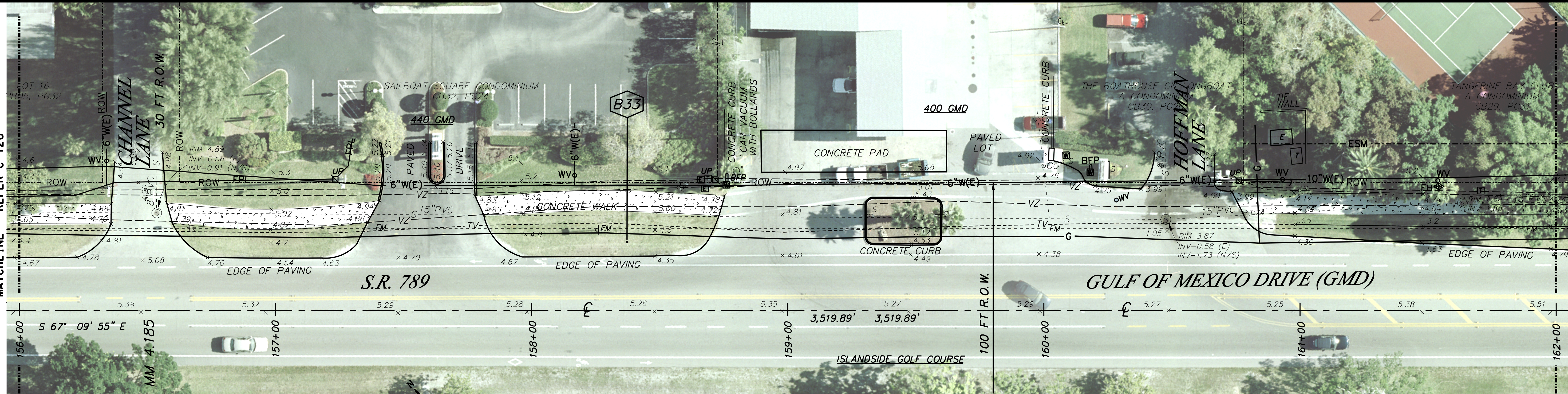
MATCHLINE - REFER C-126

MATCHLINE - REFER C-128

MATCHLINE - REFER C-128

MATCHLINE - REFER C-128

MATCHLINE - REFER C-128



1 EXISTING ROADWAY, UTILITIES AND AERIAL
C-127 STA 156+00 TO 162+00

2 PROPOSED POTABLE WATERLINE PLAN
C-127 STA 156+00 TO 162+00

3 PROPOSED POTABLE WATERLINE PROFILE
C-127 STA 156+00 TO 162+00

CONTRACTOR SHALL PROVIDE SINGLE SERVICE CONNECTION WITH CORPORATION STOP AND POLYPROPYLENE (PE) PIPE.

CONTRACTOR SHALL PROVIDE SINGLE SERVICE CONNECTION WITH CORPORATION STOP AND POLYPROPYLENE (PE) PIPE.

PROFILE NOTE:
"FIELD VERIFY" CONNECTIONS TO EXISTING WM. EXISTING WATER MAIN CONNECTION LOCATIONS SHOWN ARE FOR SCHEMATIC USE ONLY.

Thomas G. Walker, P.E.
Florida PE 31462

Date:

DESIGNED BY: NO.	PROJECT MANAGER:	ENGINEERING, INC.	DATE
LSA/TGW	LAURA S. ANDREWS, PE	VISIONS, INC.	10/17/08
DRAWN BY:	FILE NAME:	UPSIZE POTABLE WATER TRANSMISSION MAIN	
ABE	LBK_WTR_C-127.DWG	TOWN OF LONGBOAT KEY, SARASOTA COUNTY, FLORIDA	
DATE	ACCOUNT:		
10/17/08			
DRWG. NO.:	C-127		SHT. 36 OF 55