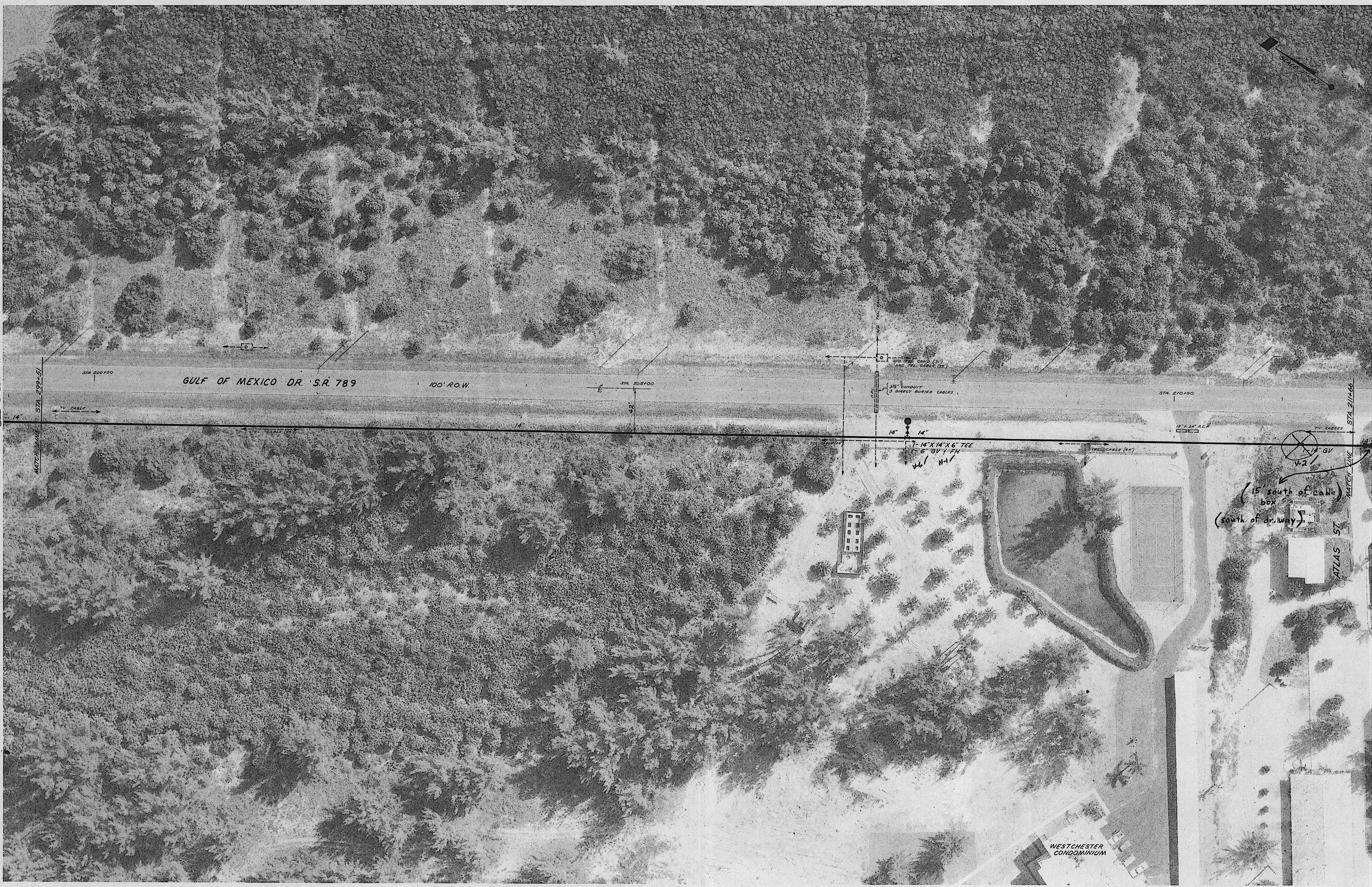


SEE SHEET 39



|  |              |          |        |          |                                 |             |                        |
|--|--------------|----------|--------|----------|---------------------------------|-------------|------------------------|
| FOR: TOWN OF LONGBOAT KEY, FLORIDA                                 | LTR. DATE    | REVISION | BY     | SCALE    | DATES                           | DESIGNED BY | APPROVED BY:           |
| WATER DISTRIBUTION SYSTEM<br>LONGBOAT KEY, FLORIDA                 | 1/4"         | 12-14-70 | L.D.L. | 1" = 40' | FLOWN SEPT. 9, 1970<br>12-10-70 | E.W.N.      | <i>Marion Wellford</i> |
|  |              |          |        |          |                                 |             |                        |
| SMALLY · WELLFORD & NALVEN — CONSULTING ENGINEERS — SARASOTA, FLA. |              |          |        |          | CHECKED BY                      | PROJECT NO. | MARION WELLFORD, P.E.  |
|  |              |          |        |          | T.L.E.                          | 1217        | FLA. CERT. NO. 5367    |
| SHEET NUMBER   | SEE SHEET 41 |          |        |          |                                 |             |                        |
| 40   |              |          |        |          |                                 |             |                        |
| REVISION   |              |          |        |          |                                 |             |                        |
| 1/4"   |              |          |        |          |                                 |             |                        |

INDEX NO. E-1217-58