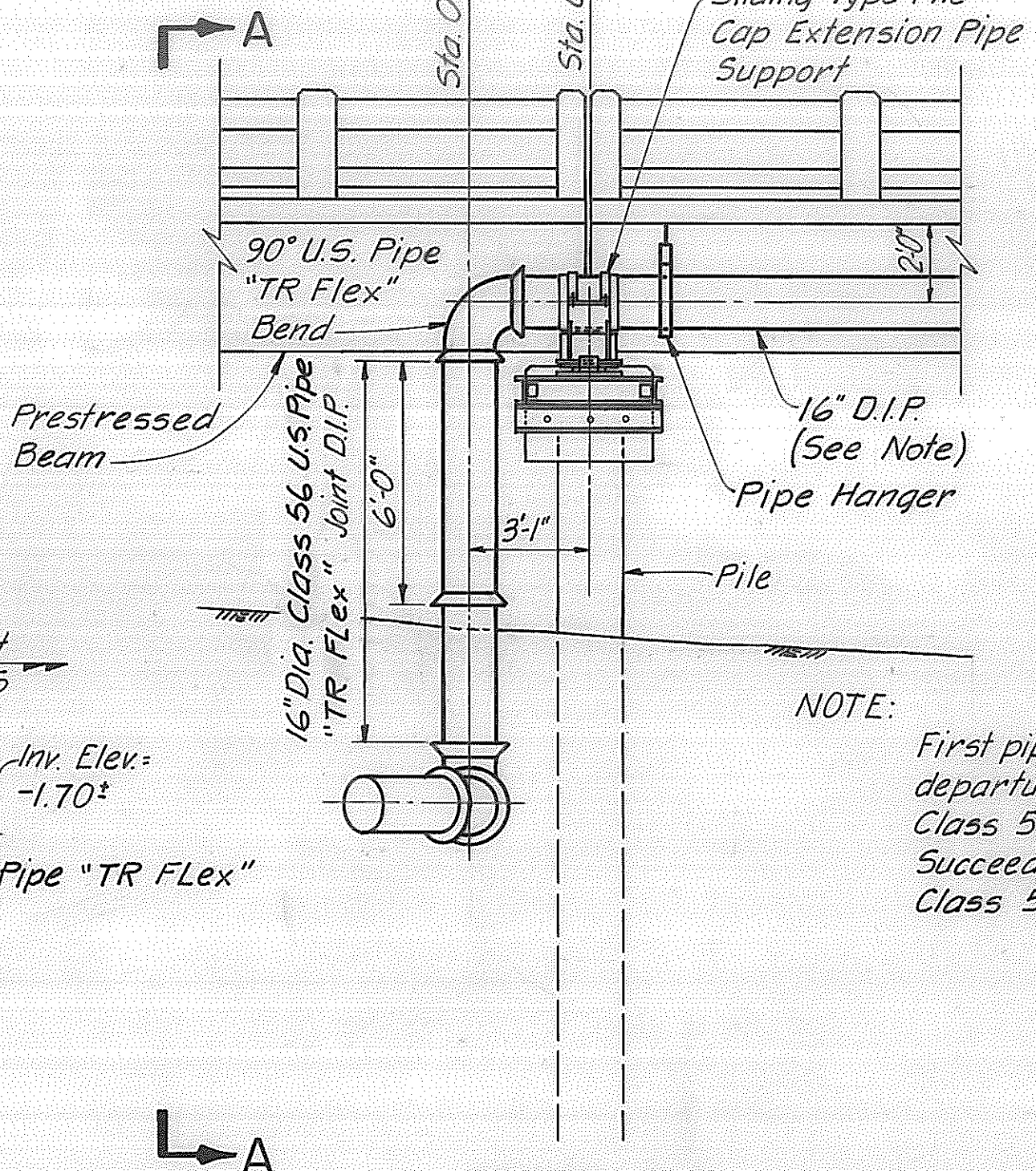


SECTION A-A

SOUTH DEPARTURE (LONGBOAT KEY)



SECTION B-B

BRIDGE DEPARTURE DETAILS

SCALE: 1/4" = 1'-0"

NOTE:
 First pipe on bridge adjacent to departures shall be Full length Class 56 U.S. Pipe "TR Flex" Jt. Succeeding pipes shall be Class 52 U.S. Pipe "TR Flex" Jt.

