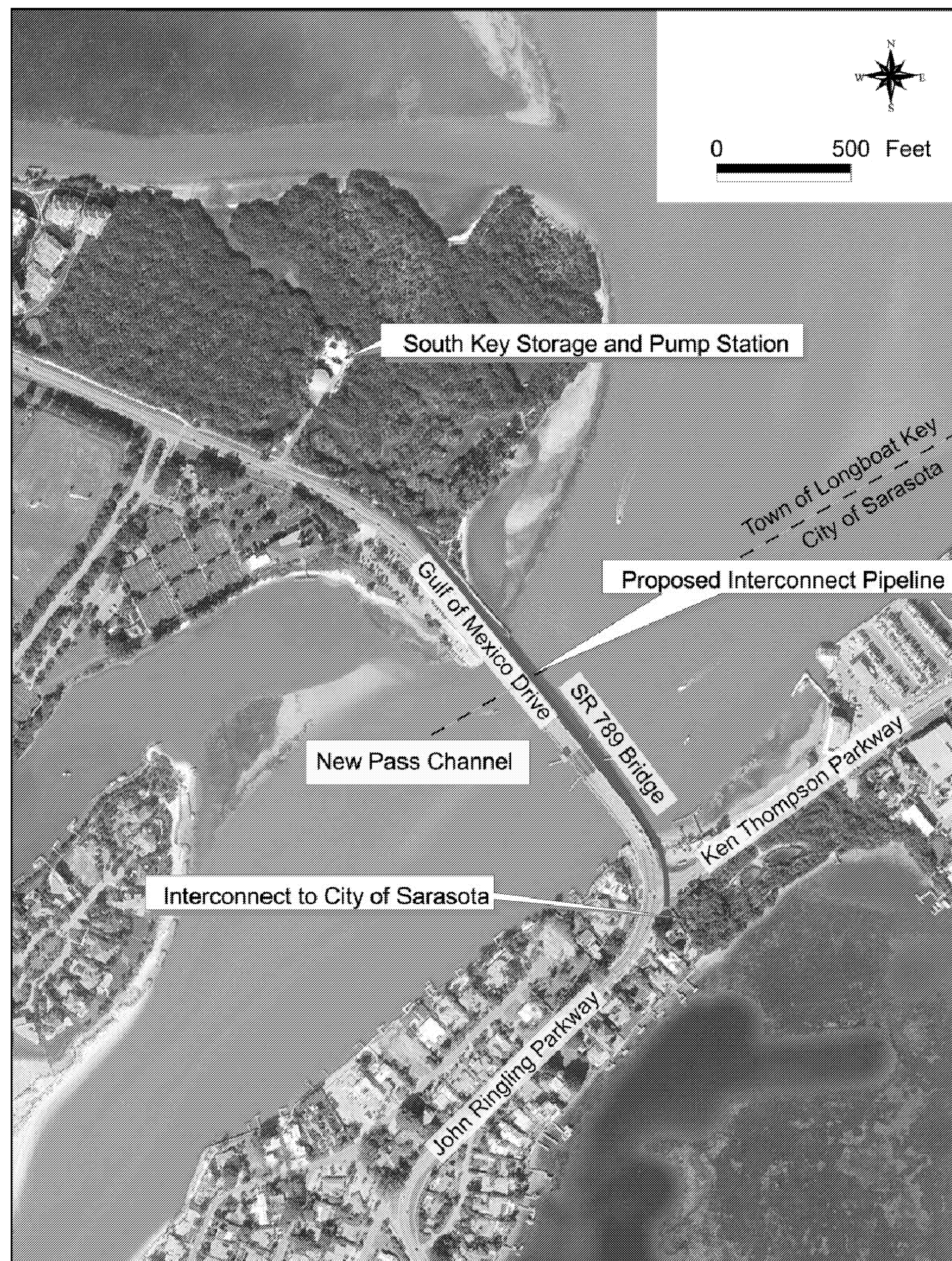


POTABLE WATER SYSTEM IMPROVEMENTS FOR TOWN OF LONGBOAT KEY, FLORIDA



PIPELINE INTERCONNECT

JULY 2007

REGISTERED ENGINEERS
STATE OF FLORIDA

GENERAL
CIVIL
MECHANICAL

ELWOOD G. HEROM, P.E. DATE
NO. 57476

CAMP DRESSER & McKEE INC.

1715 NORTH WESTSHORE BOULEVARD, SUITE 875
TAMPA, FLORIDA 33607
TEL: 813-281-2900

FL. CERT. OF AUTHORIZATION NO. EB-0000020

PROJECT NUMBER: 2790-46269

RECORD DRAWINGS

THESE RECORD DRAWINGS HAVE BEEN PREPARED BASED ON INFORMATION PROVIDED BY OTHERS. THE ENGINEER HAS NOT VERIFIED THE ACCURACY OF THIS INFORMATION AND SHALL NOT BE RESPONSIBLE FOR ANY ERRORS OR OMISSIONS WHICH MAY BE INCORPORATED HEREIN AS A RESULT.
CAMP DRESSER & McKEE INC. Date JUNE 2009

RECORD DRAWING

Southwest Florida
Water Management District

THIS PROJECT IS PARTIALLY FUNDED BY THE MANASOTA BASIN BOARD OF THE
SOUTHWEST FLORIDA WATER MANAGEMENT DISTRICT (SWFWMD)

consulting
engineering
construction
operations

CDM

INDEX OF SHEETS

SHEET NO.	TITLE
GENERAL	COVER
G-1	INDEX, LEGEND, ABBREVIATIONS, AND GENERAL NOTES
G-2	SYMBOLS
CIVL	
C-1	SITE SURVEY/KEY PLAN
C-1A	EASEMENT DESCRIPTIONS
C-2	CHANNEL CROSSING PLAN AND PROFILE
C-3	PLAN AND PROFILE DELETED
C-4	PLAN AND PROFILE DELETED
C-5	PLAN AND PROFILE DELETED
C-6	PLAN AND PROFILE DELETED
C-7	PLAN AND PROFILE DELETED
CD-1	MISCELLANEOUS DETAILS
CD-2	MISCELLANEOUS DETAILS
SC-1	SITE SURVEY (BY CONTRACTOR)

GENERAL NOTES

- ALL WORK SHALL BE PERFORMED IN ACCORDANCE WITH THESE PLANS AND SPECIFICATIONS AND THE REQUIREMENTS AND STANDARDS OF ALL GOVERNING AUTHORITIES.
- PRIOR TO STARTING CONSTRUCTION, THE CONTRACTOR SHALL BE RESPONSIBLE TO CONFIRM THAT ALL REQUIRED PERMITS AND APPROVALS HAVE BEEN OBTAINED, NO CONSTRUCTION OR FABRICATION SHALL BEGIN UNTIL THE CONTRACTOR HAS RECEIVED AND THOROUGHLY REVIEWED ALL PLANS AND OTHER DOCUMENTS APPROVED BY ALL OF THE PERMITTING AUTHORITIES. CONTRACTOR SHALL BE RESPONSIBLE FOR ALL DEMOLITION AND BUILDING PERMITS, UTILITY DISCONNECTION AND UTILITY RECONNECTION/NEW SERVICE APPLICATIONS AND FEES.
- ALL ELEVATIONS ARE REFERRED TO NATIONAL GEODETIC VERTICAL DATUM OF 1988.
- TOPOGRAPHIC SURVEY WAS PERFORMED BY:
GEORGE F. YOUNG, INC.
299 DR. MARTIN LUTHER KING JR. ST. N.
ST PETERSBURG, FL 33701
PHONE 727-822-4317
- THE LOCATIONS OF UNDERGROUND FACILITIES SHOWN ON THESE PLANS ARE BASED ON INFORMATION PROVIDED BY THE UTILITIES AND SHALL BE CONSIDERED APPROXIMATE. IT SHALL BE THE CONTRACTOR'S FULL RESPONSIBILITY TO CONTACT THE VARIOUS UTILITY COMPANIES TO LOCATE THEIR FACILITIES PRIOR TO STARTING CONSTRUCTION. NO ADDITIONAL COMPENSATION SHALL BE PAID TO THE CONTRACTOR FOR DAMAGE AND REPAIR TO THESE FACILITIES CAUSED BY HIS WORK FORCE.
- THE CONTRACTOR SHALL NOTIFY THE SUPERINTENDENTS OF THE WATER, SANITARY SEWER, GAS, TELEPHONE, CABLE TELEVISION, AND POWER COMPANIES 10 DAYS IN ADVANCE THAT HE INTENDS TO START WORK AND SCHEDULE UTILITY SERVICE DISCONNECTIONS AND RECONNECTIONS. THE OWNER DISCLAIMS ANY RESPONSIBILITY FOR THE SUPPORT AND PROTECTION OF SEWERS, DRAINS, WATER PIPES, GAS PIPES, CONDUITS OF ANY KIND, UTILITIES OR OTHER STRUCTURES OWNED BY THE CITY, TOWN, COUNTY, STATE OR BY PRIVATE OR PUBLIC UTILITIES LEGALLY OCCUPYING ANY STREET, ALLEY, PUBLIC PLACE OR RIGHT-OF-WAY.
- SITE CLEARING SHALL INCLUDE THE LOCATION AND REMOVAL OF ALL UNDERGROUND STRUCTURES WHICH ARE NOT IN SERVICE AS NECESSARY FOR THE COMPLETION OF THE WORK. THESE INCLUDE PIPES, VALVES, DRAINAGE STRUCTURES, ETC.
- PROPERTY OBSTRUCTIONS WHICH ARE TO REMAIN IN PLACE, SUCH AS SEWERS, DRAINS WATER OR GAS PIPES, CONDUITS, CABLES, POLES, WALLS, POSTS, ETC. ARE TO BE CAREFULLY PROTECTED. CONTRACTOR SHALL NOTIFY ENGINEER PRIOR TO REMOVING ANY OBSTRUCTIONS NOT SPECIFICALLY NOTED ON THE PLANS.
- RELOCATION OF OBSTRUCTIONS OWNED BY PRIVATE PROPERTY OWNERS, SUCH AS MAIL BOXES, FENCES, SHEDS, LAWN FURNITURE, ANIMAL SHELTERS AND ENCLOSURES, ETC. SHALL BE THE RESPONSIBILITY OF THE CONTRACTOR WHO MUST COORDINATE WITH THE PROPERTY OWNER.
- THE CONTRACTOR SHALL PLACE AND MAINTAIN ADEQUATE BARRICADES, CONSTRUCTION SIGNS, FLASHING LIGHTS, TORCHES, RED LANTERNS AND GUARDS DURING PROGRESS OF CONSTRUCTION WORK IN PUBLIC ROADWAYS, IN ACCORDANCE WITH APPLICABLE FOOT REGULATIONS.
- ALL AREAS, NOT PAVED, DISTURBED DURING CONSTRUCTION SHALL BE STABILIZED BY SODDING OR SEEDING AND MULCHING UNLESS OTHERWISE INDICATED. SOD, SEED AND MULCH SHALL BE PLACED, WATERED AND FERTILIZED IN ACCORDANCE WITH THESE CONSTRUCTION DOCUMENTS.
- ALL SITE CLEARING AND CONSTRUCTION DEBRIS AND EXCESS MATERIAL SHALL BE HAULED AWAY AND DISPOSED OF APPROPRIATELY AT THE CONTRACTOR'S EXPENSE.
- CONTRACTOR SHALL BE FULLY RESPONSIBLE FOR CONTROL OF ALL EROSION AND SEDIMENTATION. THE CONTRACTOR SHALL INSTALL PRIOR TO THE START OF CONSTRUCTION AND MAINTAIN DURING CONSTRUCTION ALL SEDIMENT CONTROL MEASURES AS REQUIRED TO RETAIN ALL SEDIMENTS ON THE SITE.
- NO CONSTRUCTION, PARKING, OR STORAGE WILL OCCUR WITHIN THE DRIP LINE OF TREES TO REMAIN. ALL TREE BARRICADES WILL BE IN PLACE PRIOR TO ANY LAND DISTURBANCE.
- CONTRACTOR SHALL VISIT SITE TO FAMILIARIZE HIMSELF WITH EXISTING CONDITIONS AND THE EXTENT OF DEMOLITION, CLEARING & GRUBBING REQUIRED, PRIOR TO BID SUBMISSION.
- ALL DIMENSIONS AND GRADES SHOWN ON THE PLANS SHALL BE FIELD VERIFIED BY THE CONTRACTOR PRIOR TO CONSTRUCTION. CONTRACTOR SHALL NOTIFY THE ENGINEER IF ANY DISCREPANCIES EXIST PRIOR TO PROCEEDING WITH CONSTRUCTION FOR NECESSARY PLAN OR GRADE CHANGES. NO EXTRA COMPENSATION SHALL BE PAID TO THE CONTRACTOR FOR WORK HAVING TO BE REDONE DUE TO DIMENSIONS OR GRADES SHOWN INCORRECTLY ON THESE PLANS IF SUCH NOTIFICATION HAS NOT BEEN GIVEN.
- CONTRACTOR SHALL BE COMPLETELY RESPONSIBLE FOR THE LAYOUT OF THE BUILDING, PIPING, SITE IMPROVEMENTS AND WORK INCIDENTAL TO THE PROJECT. ANY DEVIATION FROM THE PRESCRIBED ALIGNMENT NECESSARY TO AVOID CONFLICTS SHALL NOT BE PERMITTED WITHOUT WRITTEN PERMISSION FROM THE ENGINEER OR OWNER.
- CONTRACTOR TO COORDINATE WITH RESPONSIBLE UTILITY FOR PROTECTION/HOLDING OF UTILITY POLES, GUY WIRES, AND GUY ANCHORS IN AREAS OF CONSTRUCTION.
- A MINIMUM SEPARATION OF 10 FEET HORIZONTALLY OR 18 INCHES VERTICALLY MUST BE MAINTAINED BETWEEN WATER AND SEWER LINES. IF THIS SEPARATION IS NOT POSSIBLE, THE SEWER LINE MUST BE ENCASED IN CONCRETE.
- CONTRACTOR SHALL BE RESPONSIBLE FOR AND COMPLY WITH ANY TESTING REQUIRED BY THE LOCAL GOVERNING AGENCY IN ADDITION TO THE TESTING REQUIREMENTS OUTLINED IN THE SPECIFICATIONS.
- TO MAINTAIN CONTRACT PLAN CLARITY ALL SYSTEM AND EQUIPMENT COMPONENTS MAY NOT BE SHOWN. CONTRACTOR IS RESPONSIBLE TO FURNISH AND INSTALL ALL EQUIPMENT, FITTINGS, ADAPTERS, CONNECTORS, AND VALVES AND OTHER COMPONENTS TO PROVIDE FULLY FUNCTIONAL EQUIPMENT IN ACCORDANCE WITH MANUFACTURER'S REQUIREMENTS.
- CONTRACTOR SHALL MAINTAIN RECORD DRAWINGS DURING CONSTRUCTION WHICH SHOW "AS-BUILT" CONDITIONS OF ALL WORK INCLUDING PIPING, DRAINAGE STRUCTURES, TOPOGRAPHIC OF POND(S), OUTLET STRUCTURES, DIMENSIONS, ELEVATIONS, GRADING, ETC. RECORD DRAWINGS SHALL BE PROVIDED TO THE ENGINEER OF RECORD PRIOR TO REQUESTING FINAL INSPECTION.
- THE CONTRACTOR SHALL NOTIFY FDOT 48 HOURS IN ADVANCE PRIOR TO INITIATING ANY WORK IN THE STATE RIGHTS-OF-WAY.
- WORK PROPOSED WITHIN OR NEXT TO THE R/W WITH EXISTING SWALES SYSTEMS MAY REQUIRE ADDITIONAL PROVISIONS TO REPAIR/RESTORE EXISTING DRAINAGE SWALES AS NEEDED TO ENSURE ADEQUATE DRAINAGE. R/W SHOULDER STABILIZATION SHOULD BE IN ACCORDANCE WITH FDOT STANDARD SPECIFICATIONS.
- A MAINTENANCE OF TRAFFIC PLAN MUST BE SUBMITTED TO THE ENGINEER FOR APPROVAL PRIOR TO CONSTRUCTION ACTIVITIES. THE MAINTENANCE OF TRAFFIC PLAN WILL BE IN ACCORDANCE WITH FDOT STANDARDS.
- LOCATIONS OF UNDERGROUND UTILITIES ARE SHOWN BASED ON THE BEST INFORMATION AVAILABLE AT THE TIME OF PREPARATION OF THE CONTRACT DOCUMENTS. CONTRACTOR SHALL VERIFY THE LOCATION OF ALL EXISTING UTILITIES AND NOTIFY INDIVIDUAL UTILITY COMPANIES 48 HOURS PRIOR TO CONSTRUCTION AND CALL THE UNDERGROUND FACILITIES LOCATION SERVICE AT 800-432-4770

ABBREVIATIONS

GENERAL	SYMBOLS	GENERAL	SYMBOLS	PIPE	SYMBOLS
ALUMINUM	AL., ALUM.	SYMMETRICAL	SYMM.	ASBESTOS CEMENT PIPE	ACP
ANGLE	<	SECTION	SEC.	BLACK STEEL PIPE	BSP
BENCH MARK	B.M.	STANDARD	ST'D	CAST IRON	CI
BETWEEN	BTWN.	STEEL	STL.	CAST IRON PIPE	CIP
CENTER LINE	CL	THICK	THK.	CAST IRON SOIL PIPE	CISP
CENTER TO CENTER	C.C.	TYPICAL	TYP.	CONCRETE PRESSURE PIPE	CPP
DIAMETER	DIA., DIAM.	TEMPORARY	TEMP.	COPPER PIPE	CU
DIAGONAL	DIAG.	THREADED	THD.	DUCTILE IRON PIPE	DIP
DIMENSION	DIM.	UTILITY EASEMENT	U.E.	DUCTILE IRON	DI
DISCHARGE	DISC.	VERTICAL	VERT.	FIBERGLASS REINFORCED PIPE	FRP
DRAWING	DWG.	WEST	W.	FLANGE	FLG
EACH	EACH	WITH	W/	GALVANIZED STEEL PIPE	GSP
ELEVATION	EL., ELEV.	WATER LEVEL	W.L.	MECHANICAL JOINT	MJ
EFFLUENT	EFF.	WEATHERPROOF	WPF.	METAL REINFORCED PLASTIC PIPE	MRPP
EXISTING	EXIST.	WATER	WTR.	POLYETHYLENE PIPE	PP
FINISH	FIN.			POLYVINYLCHLORIDE	PVC
FLOOR	FL.			REINFORCED CONCRETE PIPE	RCP
HIGH	H.	VALVES, FITTINGS, ETC.	SYMBOLS	RESTRAINED JOINT	RJ
HIGH POINT	H.P.	AIR CUSHION CHECK VALVE	ACCV	SLIP-ON JOINT	SJ
INFLUENT	INFL.	AIR RELIEF VALVE	ARV	STEEL PIPE	SP
LONG	LG.	BALL CHECK VALVE	BCV	TIED JOINT	TJ
LIGHT POLE	L.P.	BALL VALVE	BAV	VITRIFIED CLAY PIPE	VCP
MATERIAL	MTL.	BLIND FLANGE	B.F.		
MANUFACTURE	MFG.	BURIED GEAR OPERATOR	BO		
MAXIMUM	MAX.	BUTTERFLY VALVE	BV		
MECHANICAL	MECH.	CHECK VALVE	CV		
METAL	MET.	ELECTRIC VALVE ACTUATOR	EVA		
MINIMUM	MIN.	ELEVATED GEAR OPERATOR	EO		
MOUNTED	MTD.	EXPANSION JOINT	EXJ		
NOMINAL	NOM.	FIRE HYDRANT	FH		
NOT TO SCALE	N.T.S.	FITTINGS	FTG		
NUMBER	NO.	FLANGED ADAPTER	FA		
ON CENTER	O.C.	FLEXIBLE COUPLING	FC		
OPTION	OPT.	FLOOR BOX (BUSHING TYPE)	FB		
OPPOSITE	OPP.	FLOOR STAND	FS		
OPENING	OPNG.	GATE VALVE	GV		
OR EQUAL	O/E.	HOSE BIBB	HB		
PIECE	PC.	HYDRAULIC VALVE ACTUATOR	HVA		
POINT	PT.	MECHANICAL JOINT PLUG	MJP		
POUND	LB.	PLASTIC BALL VALVE	PBV		
PLATE	PL.	PLASTIC CHECK VALVE	PCV		
RADIUS	RAD., R.	PLUG VALVE	PV		
REQUIRED	REQ'D	REDUCER	RED		
RIGHT OF WAY	R/W	SILENT CHECK VALVE	SCV		
ROOM	RM.	UNION	UN		
SQUARE	SQ.	VALVE BOX	VB		
STAINLESS STEEL	S.S.	VICTAULIC COUPLING (GROOVED ENDS)	VC (G)		
SIDEWALK	SDWK.	VICTAULIC COUPLING (SHOULDERED ENDS)	VC (S)		
SHEET	SH., SHT.	WALL SLEEVE	WS		
		WALL PIECE (WITH WATER STOP)	WP		

UTILITY CONTACT INFORMATION

DALE HAAS, P.E.
CITY OF SARASOTA PUBLIC WORKS
1750 12TH STREET
SARASOTA, FLORIDA 34236
(941) 365-2200 EXT. 6260

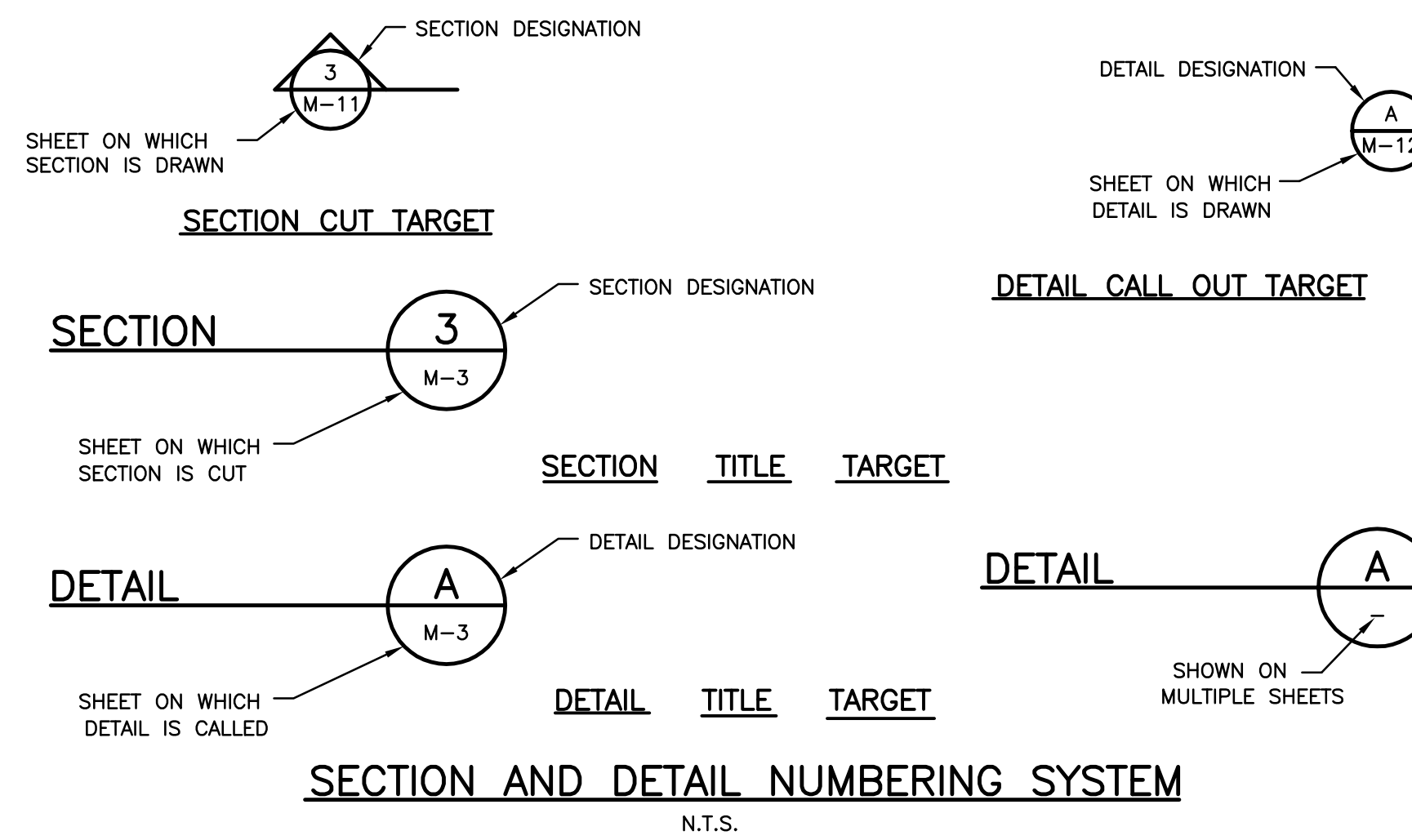
NEAL MARTIN
LONGBOAT KEY UTILITIES
600 GENERAL HARRIS STREET
LONGBOAT KEY, FLORIDA 34228
(941) 316-1988

DON SAYER
FLORIDA POWER AND LIGHT
5657 SOUTH MCINTOSH RD.
SARASOTA, FLORIDA 34233
(941) 927-4251

TED FELAGEE
TECO - PEOPLES GAS
SARASOTA ENGINEERING
8261 VICO COURT
SARASOTA, FLORIDA 34240
(877) 832-6747

MIKE ANKRIM
VERIZON FLORIDA INC.
1701 RINGLING BLVD.
SARASOTA, FLORIDA 34236
(941) 518-9447

PHIL BELANGER
COMCAST CABLEVISION OF WEST FLORIDA
5205 FRUITVILLE ROAD
SARASOTA, FLORIDA 34232
(941) 342-3577



RECORD DRAWINGS
THESE RECORD DRAWINGS HAVE BEEN PREPARED BASED ON INFORMATION PROVIDED BY OTHERS. THE ENGINEER HAS NOT VERIFIED THE ACCURACY OF THIS INFORMATION AND SHALL NOT BE RESPONSIBLE FOR ANY ERRORS OR OMISSIONS WHICH MAY BE INCORPORATED HEREIN AS A RESULT.
CAMP DRESSER & MCKEE INC. Date: JUNE 2009

ELWOOD G. HEROM
P.E. NO. 57476

RECORD DRAWING

DESIGNED BY: E. HEROM
DRAWN BY: D. AUST
SHEET CHK'D BY: J. HOFFMAN
CROSS CHK'D BY: W. SPRIGGS
APPROVED BY: C. TAPPAN
DATE: JULY 2007

CDM
Camp Dresser & McKee Inc.
1715 North Westshore Boulevard, Suite 875
Tampa, Florida 33607
Tel: 813-291-2900
FL Cert. of Authorization No. EB-0000020

TOWN OF LONGBOAT KEY, FLORIDA
PIPELINE INTERCONNECT

INDEX, LEGEND, ABBREVIATIONS, AND
GENERAL NOTES

PROJECT NO. 2790-46269
FILE NAME: G01SNXOG.DWG
SHEET NO. G-1

Xref's: [BKXT], Images: [REDACTED] File name: P:\2790\46269\Pipe\records\G01SNXOG.dwg Last saved by: AUSTJD Time: 6/11/2009 10:12:27 AM

REV. NO.	DATE	DRWN	CHKD	REMARKS
06/09	JDA	JAH		RECORD DRAWINGS

PIPING SYMBOLOGY

DOUBLE LINE SYMBOL	SINGLE LINE SYMBOL	FEATURE
		WELDED JOINT
		FLANGED JOINT SIMPLIFIED REPRESENTATION.
		FLANGED JOINT COMPLEX REPRESENTATION.
		MECHANICAL JOINT SIMPLIFIED REPRESENTATION.
		MECHANICAL JOINT COMPLEX REPRESENTATION.
		MECHANICAL JOINT RESTRAINED
		PUSH ON JOINT OR CAULKED BELL & SPIGOT JOINT SIMPLIFIED REPRESENTATION
		PUSH ON JOINT OR CAULKED BELL & SPIGOT JOINT COMPLEX REPRESENTATION
		PUSH ON JOINT OR CAULKED BELL & SPIGOT JOINT RESTRAINED
		BALL JOINT
		DIRECTION OF FLOW
		PLAIN END x PLAIN END PIPE COUPLING
		PLAIN END x PLAIN END PIPE COUPLING RESTRAINED
		FLANGE x PLAIN END PIPE COUPLING
		FLEXIBLE COUPLING OR EXPANSION JOINT (SLEEVE TYPE)
		FLEXIBLE COUPLING OR EXPANSION JOINT (BELLOW TYPE)
		COUPLING FOR VICTAULIC JOINTS: (G) GROOVED (S) SHOULDERED
		FLANGE GUARD
		FLANGE FILLER
		UNION
		QUICK CONNECT COUPLING
		HOSE COUPLING

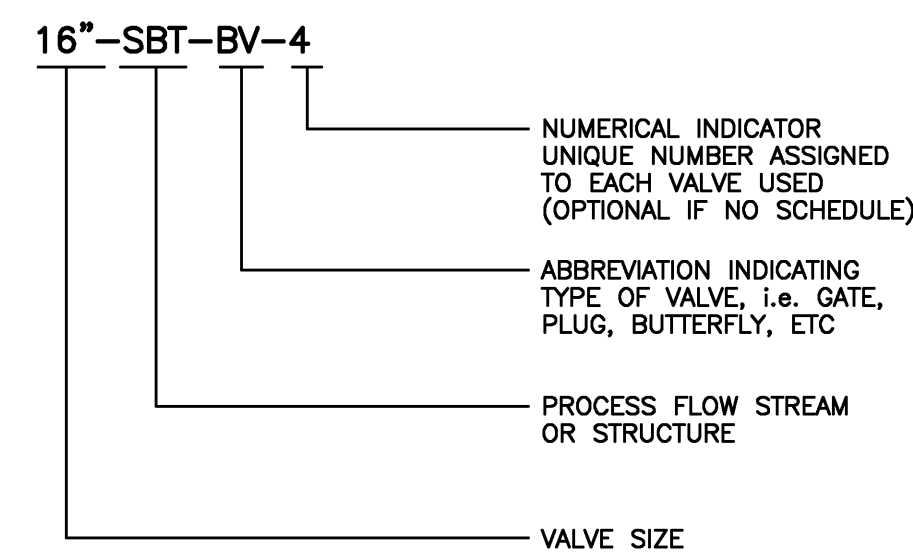
PIPE AND FITTING SYMBOL NOTES

- SIMPLIFIED JOINT SYMBOL IS USED FOR ALL SINGLE LINE PIPING SHOWN ON THE INTERIOR AND EXTERIOR PIPING DRAWINGS.
- BOTH SIMPLIFIED AND COMPLEX JOINT REPRESENTATIONS MAY BE SHOWN ON THE DRAWINGS.
- UNLESS MODIFIED BY THE GENERAL PROJECT NOTES OR DETAILED ON THE LAYOUT AND SCHEMATIC DRAWINGS PIPE AND FITTING JOINT REQUIREMENTS FOR THE VARIOUS PIPE MATERIALS ARE DEFINED IN THE SPECIFICATIONS.

VALVE SYMBOLOGY

SYMBOL	FEATURE
	UNCLASSIFIED, TYPE AS SHOWN ON THE DRAWINGS ADJACENT TO SYMBOL
	FLOW METER
	TELESCOPING VALVE
	VALVE WITH HOSE END
	GATE VALVE
	KNIFE GATE VALVE
	GLOBE VALVE
	BALL VALVE
	3-WAY BALL VALVE
	4-WAY BALL VALVE
	CONE VALVE
	NEEDLE VALVE
	PINCH VALVE
	DIAPHRAGM VALVE
	PLUG VALVE
	3-WAY PLUG VALVE
	4-WAY PLUG VALVE
	CHECK VALVE, GENERAL SYMBOL
	BALL CHECK VALVE
	DOUBLE DOOR CHECK VALVE
	ANGLE VALVE
	SOLENOID VALVE
	THREE WAY SOLENOID VALVE
	FOUR WAY SOLENOID VALVE
	MOTOR OPERATED VALVE
	FLAP VALVE
	SHEAR GATE
	MUD VALVE
	FLOOR DRAIN
	OPEN EQUIPMENT DRAIN
	ECCENTRIC REDUCER OR REDUCING BUSHING
	CONCENTRIC REDUCER OR REDUCING BUSHING
	Y-STRAINER
	CALIBRATION CYLINDER
	AIR RELEASE VALVE

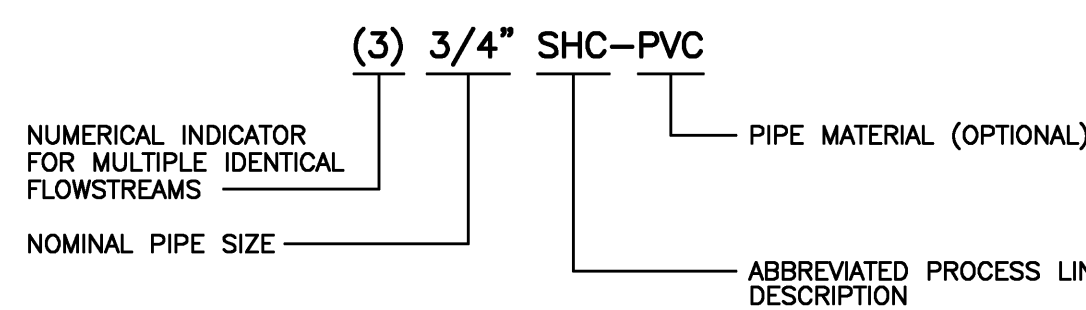
VALVE TAG (OPTIONAL)



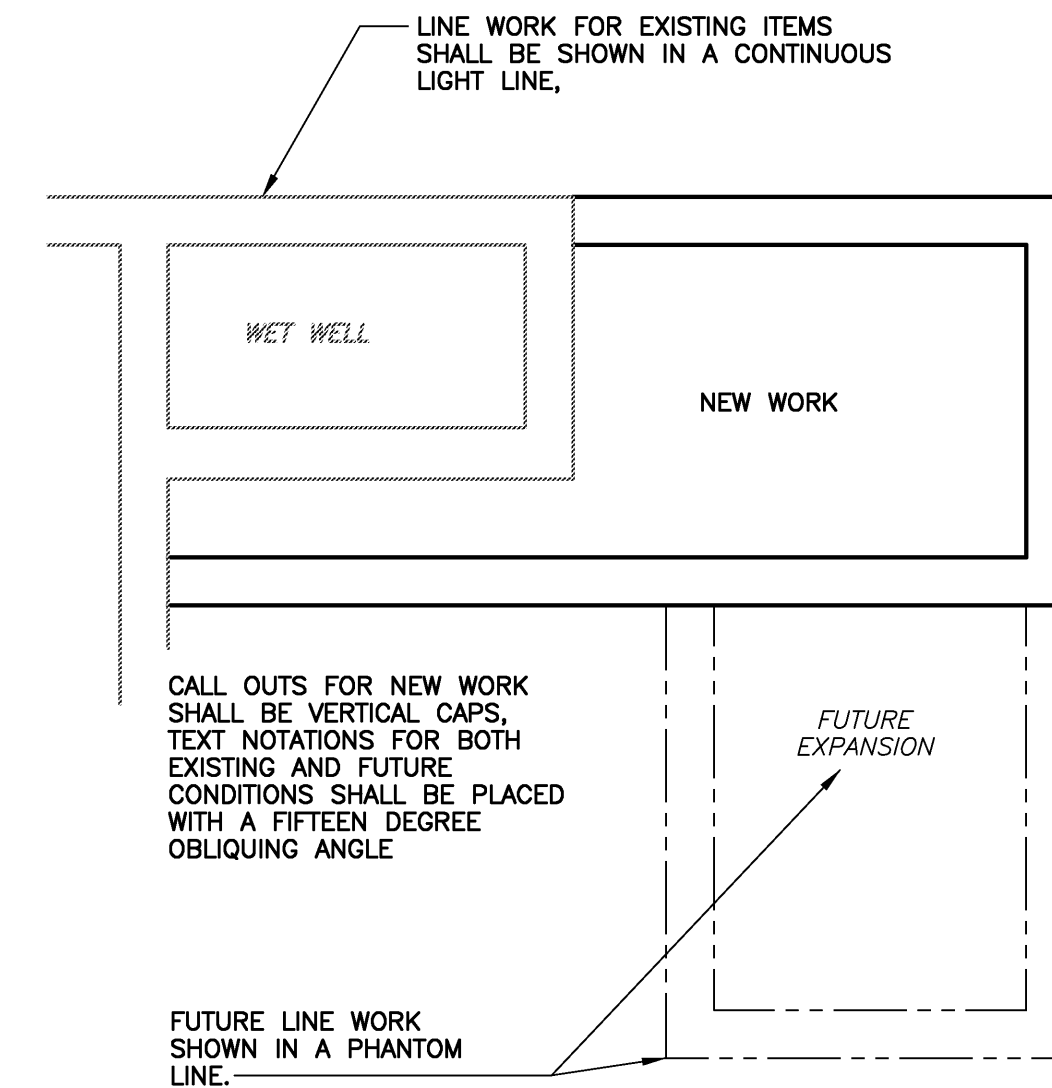
PIPELINE APPURTENANCES SYMBOLOGY

DOUBLE LINE SYMBOL	SINGLE LINE SYMBOL	FEATURE
		FLOW METER, GENERAL SYMBOL
		VENTURI FLOW METER
		FLOOR DRAIN
		OPEN EQUIPMENT DRAIN
		Y-STRAINER
		CALIBRATION CYLINDER

PIPE TAG



EXISTING OR FUTURE CONDITION DESIGNATION



LEGEND

	NEW WATER MAIN THIS PROJECT		NEW MAIN TO BE CONST. UNDER EXISTING UTILITY
	EXISTING WATER MAIN		NEW MAIN TO BE CONST. OVER EXISTING UTILITY
	EXISTING RAW WATER MAIN		EXISTING LIGHT POLE
	EXISTING SANITARY SEWER W/ MANHOLE		EXISTING POWER POLE
	EXISTING FORCE MAIN		SOIL BORING
	EXISTING BURIED TELEPHONE		BENCH MARK
	EXISTING POWER DUCTS OR CABLES		EXISTING CHAIN LINK FENCE
	OVERHEAD POWER		NEW CHAIN LINK FENCE
	EXISTING CABLE TELEVISION		NEW STRUCTURES
	EXISTING STORM SEWER W/CATCH BASIN		EXISTING STRUCTURES (TO REMAIN)
	EXISTING LIGHT POLE		EXISTING STRUCTURES (TO BE REMOVED)
	EXISTING OVERHEAD UTILITIES		NEW CONCRETE SLAB OR SIDEWALKS
	EXISTING GAS MAIN		FUTURE STRUCTURE
	EXISTING WATER VALVE		EXISTING ELEVATION
	EXISTING GAS LINE MARKER		EXISTING CATCH BASIN
	PLUG VALVE		
	GATE VALVE		
	CHECK VALVE		
	COMBINATION ARV		
	FIRE HYDRANT		
	R/W - RIGHT OF WAY		
	P - PROPERTY LINE		

RECORD DRAWINGS

THESE RECORD DRAWINGS HAVE BEEN PREPARED BASED ON INFORMATION PROVIDED BY OTHERS. THE ENGINEER HAS NOT VERIFIED THE ACCURACY OF THIS INFORMATION AND SHALL NOT BE RESPONSIBLE FOR ANY ERRORS OR OMISSIONS WHICH MAY BE INCORPORATED HEREIN AS A RESULT.
CAMP DRESSER & MCKEE INC. Date JUNE 2009

RECORD DRAWING

ELWOOD G. HEROM
P.E. NO. 57476

PROJECT NO. 2790-46269
FILE NAME: G02SYMBG.DWG

SHEET NO.

G-2

DESIGNED BY: E. HEROM
DRAWN BY: D. AUST
SHEET CHK'D BY: J. HOFFMAN
CROSS CHK'D BY: W. SPRIGGS
APPROVED BY: C. TAPPAN
DATE: JULY 2007

CDM Camp Dresser & McKee Inc.
1715 North Westshore Boulevard, Suite 875
Tampa, Florida 33607
Tel: 813-281-2900
FL Cert. of Authorization No. EB-000020

TOWN OF LONGBOAT KEY, FLORIDA

PIPELINE INTERCONNECT

SYMBOLS

REV. NO.	DATE	DRWN	CHKD	REMARKS
06/09	JDA	JAH		RECORD DRAWINGS

PROPOSED SOVEREIGN SUBMERGED LAND EASEMENT

A 40 foot wide proposed Sovereign Submerged Land Easement, 20 feet lying on both sides of the following described centerline:

Commence at the intersection of the east lot line of Lot 1, Block F, subdivision Lido C, as recorded in Plat Book 5, Page 3, public records of Sarasota County, Florida, and the southeasterly right-of-way line of City Island Road as recorded in Official Record Book 256, Page 172, Public records of Sarasota County, Florida; thence
 N 05° 00' 04" W a distance of 291.27 feet to the Point of Beginning, being the southerly Mean High Water Line of New Pass and point of curvature concave southwesterly, having a radius of 1000.00 feet, arc length 411.11 feet, central angle of 23° 33' 17" and chord bearing of N 28° 44' 01" W; thence N 40° 30' 39" W a distance of 595.57 feet to a point of curvature; thence along said curve concave southwesterly, having a radius of 8527.06 feet, arc length 201.28 feet, central angle of 01° 21' 09" and bearing N 41° 11' 13" W; thence N 41° 51' 48" W a distance of 84.09 feet to a point on the northerly Mean High Water Line of New Pass; thence continue N 41° 51' 48" W a distance of 819.27 feet to the Point of Termination. The easterly and westerly lines of said easement to be shortened or prolonged to meet at angle points and the southerly Mean High Water Line.

LESS all lands lying upland of the Mean High Water Line.

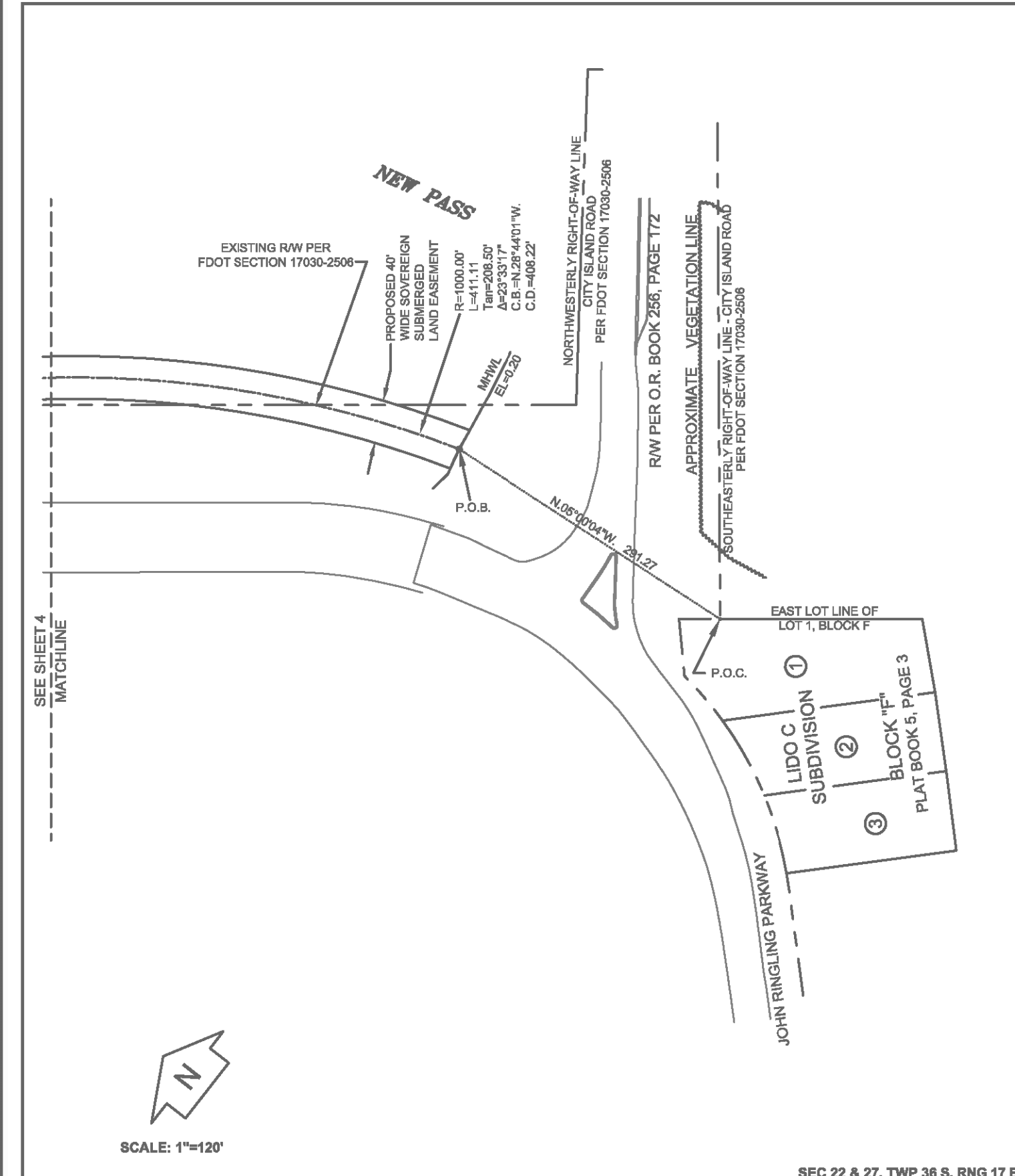
The above described Sovereign Submerged Land Easement is situate in Section 22 and 27, Township 36 South, Range 17 East, Sarasota County, Florida, containing 1.939 acres LESS any acreage lying upland of the Mean High Water Line.

NOTES:

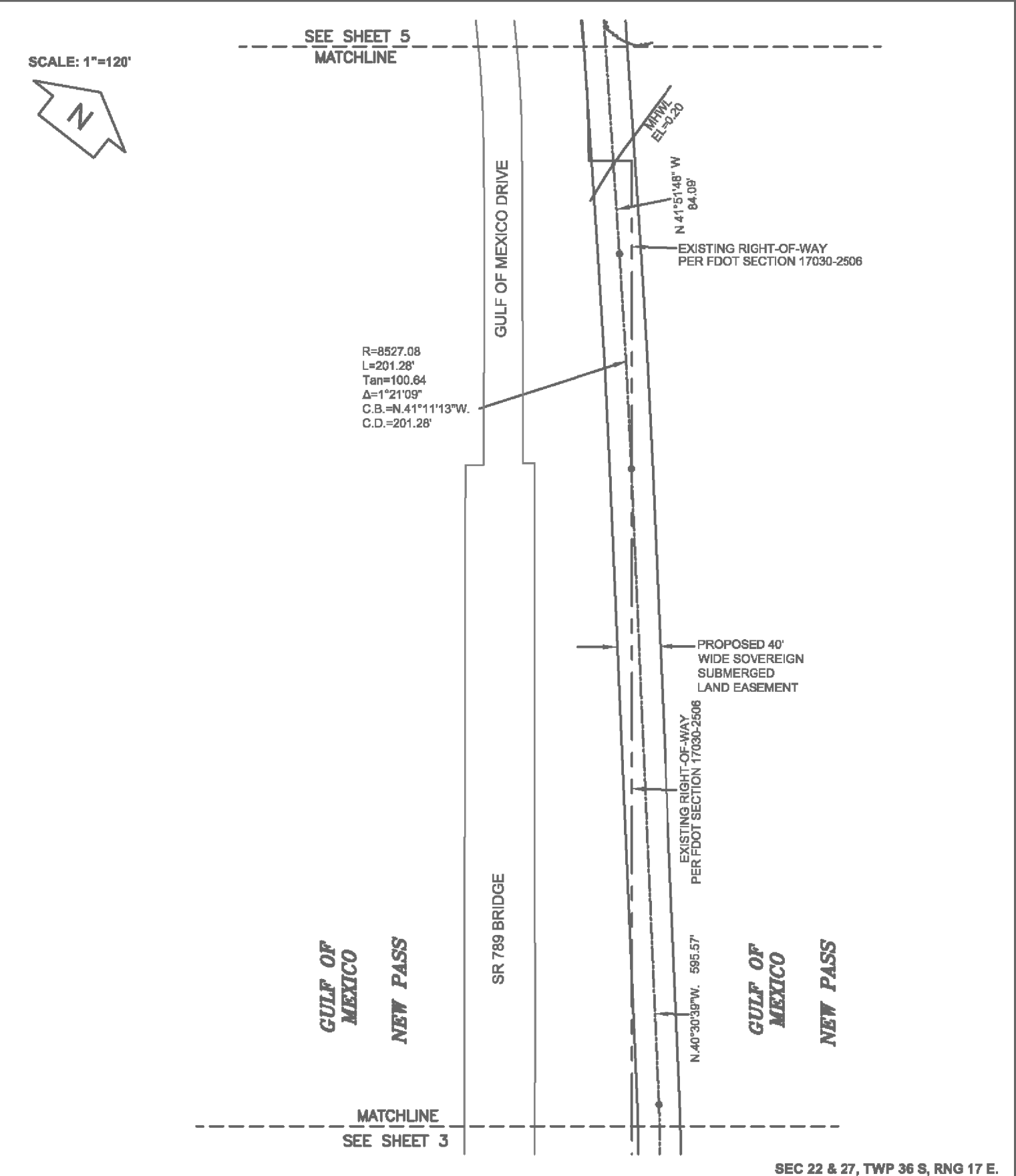
1. Bearings shown hereon are referenced to Grid North, based on the Florida State Plane Coordinate System, West Zone (Transverse Mercator Projection), North American Datum of 1983.
2. This is not a Boundary Survey.
3. The Mean High Water Line is based on the North American Vertical Datum of 1988 (NAVD88).
4. Elevations are based on Tidal Bench Mark 27 FLDT (NGS PID AG7397), having an elevation of 3.88 feet (NAVD88).
5. This sketch and description is designed to encompass a 16-inch subaqueous water main crossing New Pass.
6. The Mean High Water Line is based on a 0.20 foot elevation contour line. The Procedure approval was received on July 26th, 2005, from Alvin Gloor with the Florida Department of Environmental Protection, Division of State Lands, Bureau of Surveying and Mapping, in Tallahassee, Florida.
7. Existing Right of Way lines shown herein were calculated with the benefit of FDOT Right of Way Map Section 17030-2506, dated April 21, 1982.

LEGEND:

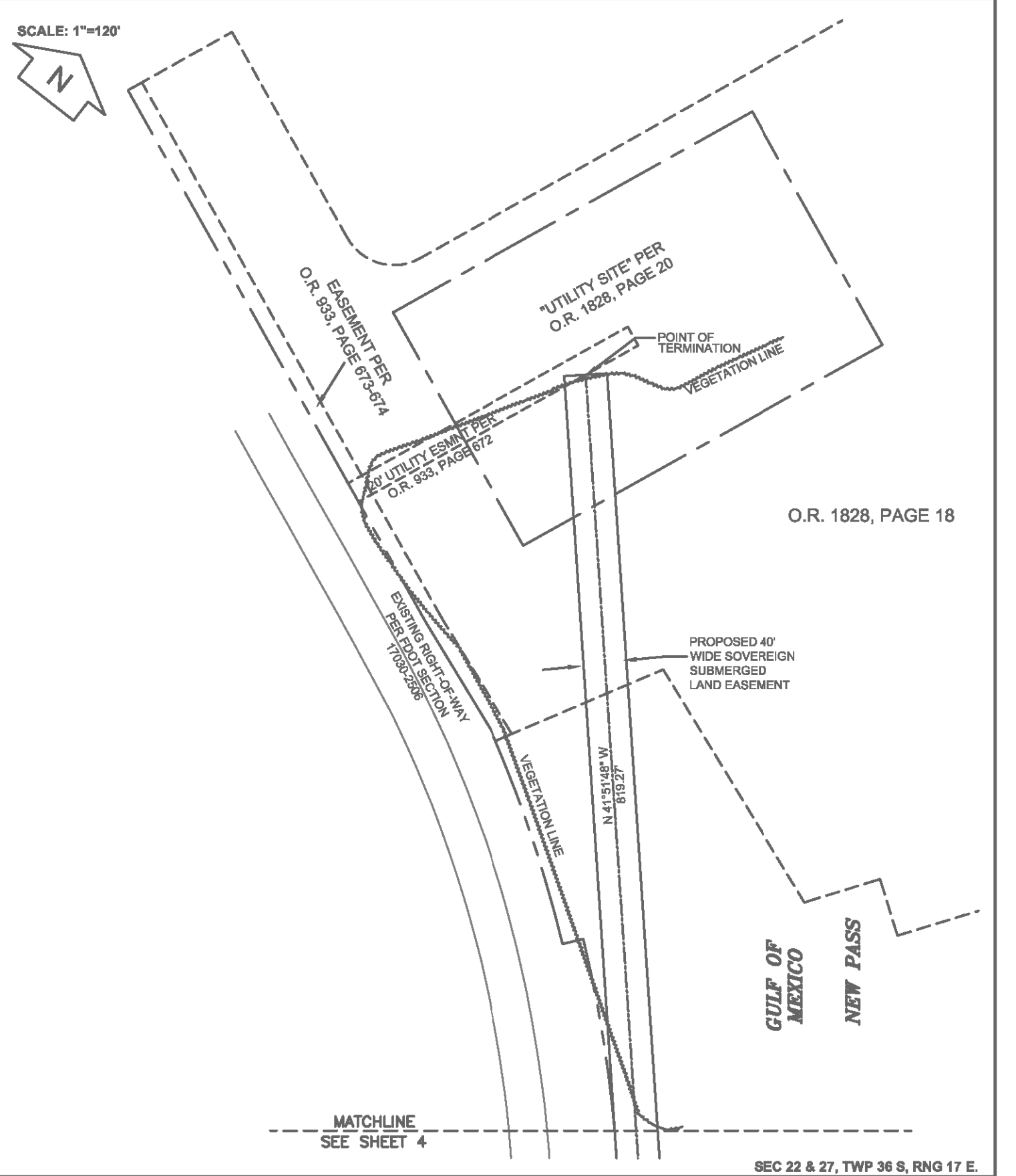
- P.O.C. Point of Commencement
- P.O.B. Point of Beginning
- PID Permanent Identifier
- MHWL Mean High Water Line
- R Radius
- L Arc Length
- Tan Tangent
- C.B. Chord Bearing
- C.D. Chord Distance
- Δ Delta
- NGS National Geodetic Survey



SEC 22 & 27, TWP 36 S, RNG 17 E.
George F. Young, Inc. LB021
 A Subsidiary of George F. Young of Florida, Inc.
 ST. PETERSBURG • TAMPA • BRADENTON • GAINESVILLE
 ARCHITECTURE • ENGINEERING • ENVIRONMENTAL
 LANDSCAPE ARCHITECTURE • PLANNING • SURVEYING
 299 Dr. Martin Luther King Jr. St. N., St. Petersburg, FL 33701-0683 (727)-822-4317
 SHEET 3 OF 5



SEC 22 & 27, TWP 36 S, RNG 17 E.
George F. Young, Inc. LB021
 A Subsidiary of George F. Young of Florida, Inc.
 ST. PETERSBURG • TAMPA • BRADENTON • GAINESVILLE
 ARCHITECTURE • ENGINEERING • ENVIRONMENTAL
 LANDSCAPE ARCHITECTURE • PLANNING • SURVEYING
 299 Dr. Martin Luther King Jr. St. N., St. Petersburg, FL 33701-0683 (727)-822-4317
 SHEET 4 OF 5



SEC 22 & 27, TWP 36 S, RNG 17 E.
George F. Young, Inc. LB021
 A Subsidiary of George F. Young of Florida, Inc.
 ST. PETERSBURG • TAMPA • BRADENTON • GAINESVILLE
 ARCHITECTURE • ENGINEERING • ENVIRONMENTAL
 LANDSCAPE ARCHITECTURE • PLANNING • SURVEYING
 299 Dr. Martin Luther King Jr. St. N., St. Petersburg, FL 33701-0683 (727)-822-4317
 SHEET 5 OF 5

Xref's: [BKTXT,] Images: [] File name: P:\2790\46269\Pipe\records\Civil\C01ASKPL.dwg Last saved by: AUSTUD Time: 6/11/2009 10:43:53 AM

REV. NO.	DATE	DRWN	CHKD	REMARKS
06/09	JDA	JAH		RECORD DRAWINGS

DESIGNED BY: E. HEROM
 DRAWN BY: D. AUST
 SHEET CHK'D BY: J. HOFFMAN
 CROSS CHK'D BY: W. SPRIGGS
 APPROVED BY: C. TAPPAN
 DATE: JULY 2007

CDM Camp Dresser & McKee Inc.
 1715 North Westshore Boulevard, Suite 875
 Tampa, Florida 33607
 Tel: 813-291-2300
 FL Cert. of Authorization No. EB-0000020

TOWN OF LONGBOAT KEY, FLORIDA
 PIPELINE INTERCONNECT

RECORD DRAWING

EASEMENT DESCRIPTIONS

RECORD DRAWINGS

THESE RECORD DRAWINGS HAVE BEEN PREPARED BASED ON INFORMATION PROVIDED BY OTHERS. THE ENGINEER HAS NOT VERIFIED THE ACCURACY OF THIS INFORMATION AND SHALL NOT BE RESPONSIBLE FOR ANY ERRORS OR OMISSIONS WHICH MAY BE INCORPORATED HEREIN AS A RESULT.

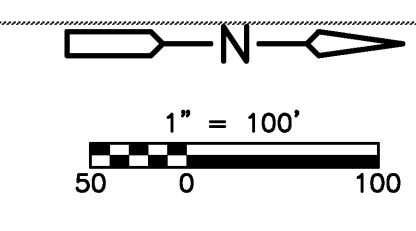
CAMP DRESSER & MCKEE INC. Date JUNE 2009

PROJECT NO. 2790-46269
 FILE NAME: C01ASKPL.DWG

ELWOOD G. HEROM
 P.E. NO. 57476

SHEET NO.
 C-1A

Xref's: [IBKXT, CE_SURVEY,] Images: []
 File name: P:\2790\46269\Pipe\record\c01stpl.dwg Last saved by: AUSTUD Time: 6/11/2009 10:17:32 AM



ABBREVIATION LEGEND

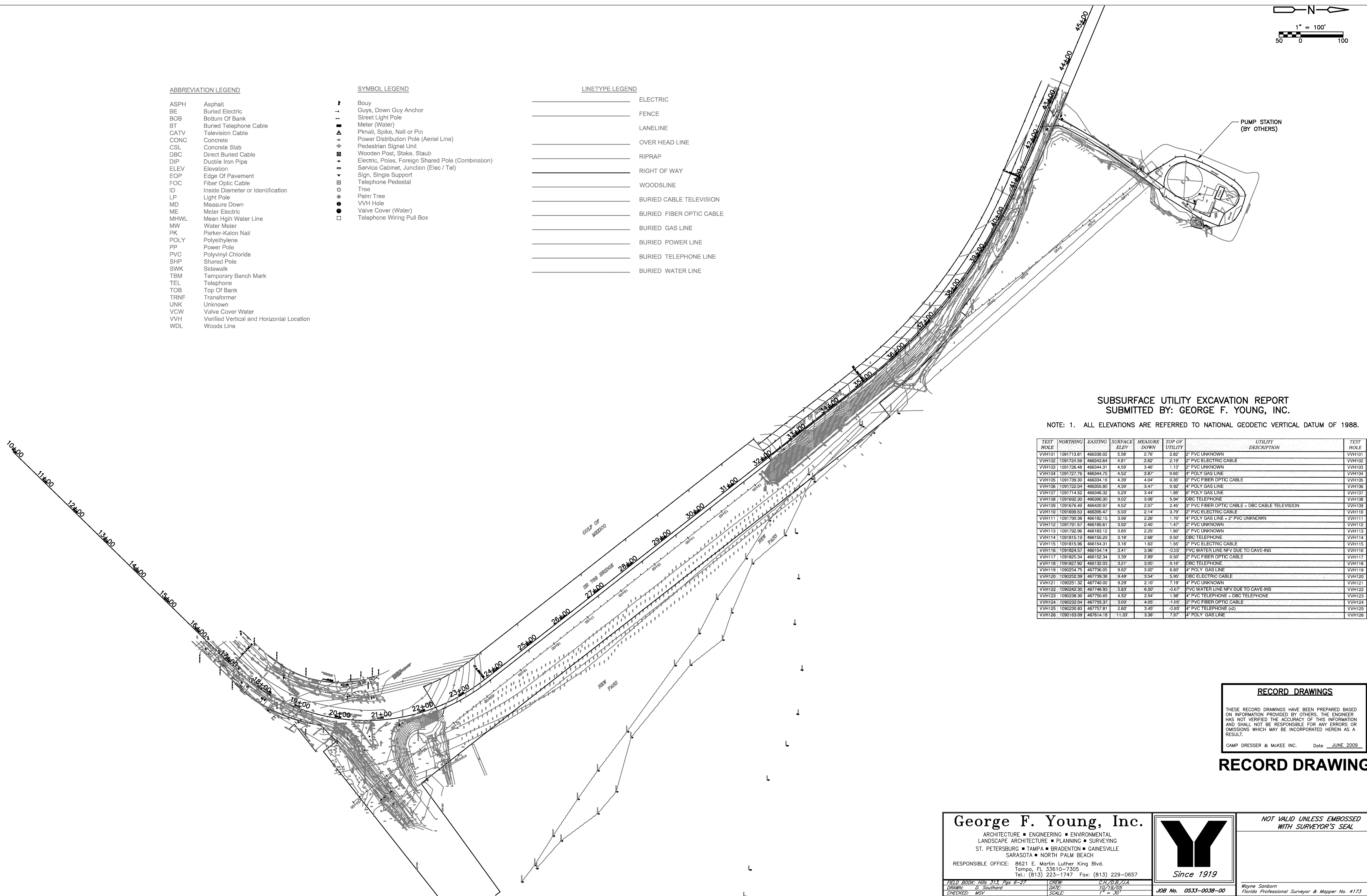
- ASPH Asphalt
- BE Buried Electric
- BOB Bottom Of Bank
- BT Buried Telephone Cable
- CATV Television Cable
- CONC Concrete
- CSL Concrete Slab
- DBC Direct Buried Cable
- DIP Ductile Iron Pipe
- ELEV Elevation
- EOP Edge Of Pavement
- FOC Fiber Optic Cable
- ID Inside Diameter or Identification
- LP Light Pole
- MD Measure Down
- ME Meter Electric
- MHWL Mean High Water Line
- MW Water Meter
- PK Parker-Kalon Nail
- POLY Polyethylene
- PP Power Pole
- PVC Polyvinyl Chloride
- SHP Shared Pole
- SWK Sidewalk
- TBM Temporary Bench Mark
- TEL Telephone
- TOB Top Of Bank
- TRNF Transformer
- UNK Unknown
- VCW Valve Cover Water
- VVH Ventilated Vertical and Horizontal Location
- WDL Woods Line

SYMBOL LEGEND

- ↑ Bouy
- ↓— Guys, Down Guy Anchor
- Street Light Pole
- Meter (Water)
- ▲ Pknail, Spike, Nail or Pin
- ▲ Power Distribution Pole (Aerial Line)
- ⊕ Pedestrian Signal Unit
- ⊕ Wooden Post, Stake, Staub
- ⊕ Electric, Poles, Foreign Shared Pole (Combination)
- ⊕ Service Cabinet, Junction (Elec / Tel)
- ⊕ Sign, Single Support
- ⊕ Telephone Pedestal
- ⊕ Tree
- ⊕ Palm Tree
- ⊕ V/H Hole
- ⊕ Valve Cover (Water)
- ⊕ Telephone Wiring Pull Box

LINETYPE LEGEND

- ELECTRIC
- FENCE
- LANELINE
- OVER HEAD LINE
- RIPRAP
- RIGHT OF WAY
- WOODSLINE
- BURIED CABLE TELEVISION
- BURIED FIBER OPTIC CABLE
- BURIED GAS LINE
- BURIED POWER LINE
- BURIED TELEPHONE LINE
- BURIED WATER LINE



**SUBSURFACE UTILITY EXCAVATION REPORT
 SUBMITTED BY: GEORGE F. YOUNG, INC.**

NOTE: 1. ALL ELEVATIONS ARE REFERRED TO NATIONAL GEODETIC VERTICAL DATUM OF 1988.

TEST HOLE	NORTHING	EASTING	SURFACE ELEV	MEASURE DOWN	TOP OF UTILITY	UTILITY DESCRIPTION	TEST HOLE
VVH101	1091713.81	466338.02	5.58	2.76	2.82	2" PVC UNKNOWN	VVH101
VVH102	1091725.59	466342.84	4.81	2.62	2.19	2" PVC ELECTRIC CABLE	VVH102
VVH103	1091726.48	466344.31	4.59	3.46	1.13	2" PVC UNKNOWN	VVH103
VVH104	1091727.76	466344.75	4.52	3.87	0.65	4" POLY GAS LINE	VVH104
VVH105	1091739.30	466334.19	4.39	4.04	0.35	2" PVC FIBER OPTIC CABLE	VVH105
VVH106	1091722.04	466355.80	4.39	3.47	0.92	4" POLY GAS LINE	VVH106
VVH107	1091714.52	466346.32	5.29	3.44	1.85	8" POLY GAS LINE	VVH107
VVH108	1091632.30	466390.30	9.02	3.08	5.94	DBC TELEPHONE	VVH108
VVH109	1091676.40	466420.97	4.52	2.07	2.45	2" PVC FIBER OPTIC CABLE + DBC CABLE TELEVISION	VVH109
VVH110	1091699.53	466395.47	5.93	2.14	3.79	2" PVC ELECTRIC CABLE	VVH110
VVH111	1091730.38	466182.15	3.96	2.26	1.70	4" POLY GAS LINE + 2" PVC UNKNOWN	VVH111
VVH112	1091701.57	466185.81	3.92	2.49	1.43	2" PVC UNKNOWN	VVH112
VVH113	1091732.96	466183.12	3.85	2.25	1.60	2" PVC UNKNOWN	VVH113
VVH114	1091815.19	466155.29	3.18	2.68	0.50	DBC TELEPHONE	VVH114
VVH115	1091815.96	466154.31	3.18	1.63	1.55	2" PVC ELECTRIC CABLE	VVH115
VVH116	1091824.57	466154.14	3.41	3.96	-0.55	PVC WATER LINE N/FV DUE TO CAVE-INS	VVH116
VVH117	1091825.34	466152.34	3.39	2.89	0.50	2" PVC FIBER OPTIC CABLE	VVH117
VVH118	1091827.92	466132.03	3.21	3.05	0.16	DBC TELEPHONE	VVH118
VVH119	1090234.75	467736.05	9.62	3.02	6.60	4" POLY GAS LINE	VVH119
VVH120	1090232.39	467739.38	9.49	3.54	5.95	DBC ELECTRIC CABLE	VVH120
VVH121	1090231.32	467740.00	9.29	2.10	7.19	4" PVC UNKNOWN	VVH121
VVH122	1090242.30	467746.93	5.83	6.90	-0.67	PVC WATER LINE N/FV DUE TO CAVE-INS	VVH122
VVH123	1090239.30	467750.05	4.52	2.54	1.98	4" PVC TELEPHONE + DBC TELEPHONE	VVH123
VVH124	1090232.04	467755.37	3.00	4.05	-1.05	2" PVC FIBER OPTIC CABLE	VVH124
VVH125	1090230.83	467757.81	2.60	3.45	-0.85	4" PVC TELEPHONE (x2)	VVH125
VVH126	1090163.09	467614.18	11.33	3.36	7.97	4" POLY GAS LINE	VVH126

RECORD DRAWINGS
 THESE RECORD DRAWINGS HAVE BEEN PREPARED BASED ON INFORMATION PROVIDED BY OTHERS. THE ENGINEER HAS NOT VERIFIED THE ACCURACY OF THIS INFORMATION AND SHALL NOT BE RESPONSIBLE FOR ANY ERRORS OR OMISSIONS WHICH MAY BE INCORPORATED HEREIN AS A RESULT.
 CAMP DRESSER & McKEE INC. Date: JUNE 2009
RECORD DRAWING

George F. Young, Inc.
 ARCHITECTURE ■ ENGINEERING ■ ENVIRONMENTAL LANDSCAPE ARCHITECTURE ■ PLANNING ■ SURVEYING
 ST. PETERSBURG ■ TAMPA ■ BRADENTON ■ GAINESVILLE
 SARASOTA ■ NORTH PALM BEACH
 RESPONSIBLE OFFICE: 8621 E. Martin Luther King Blvd. Tampa, FL 33610-7305
 Tel: (813) 223-1747 Fax: (813) 229-0657
 FIELD BOOK: Hills 313, Pgs 8-27
 DRAWN: D. Southard
 CHECKED: MSV
 DATE: 10/19/05
 SCALE: 1" = 30'
 JOB No. 0533-0038-00
 Wayne Sanborn
 Florida Professional Surveyor & Mapper No. 4173

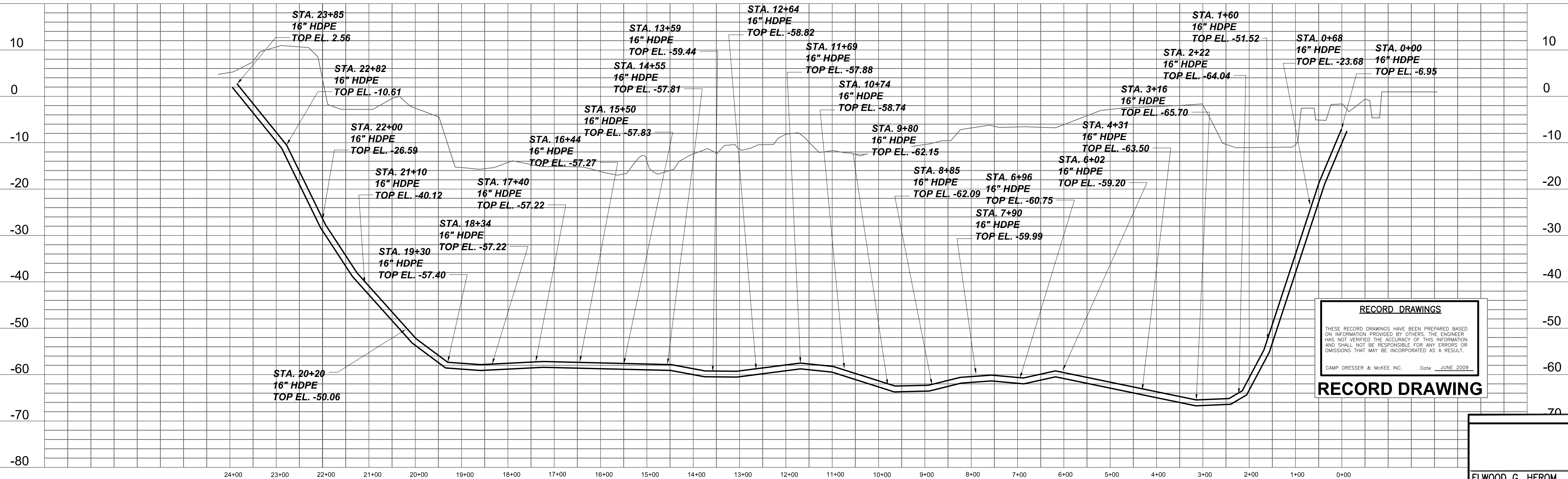
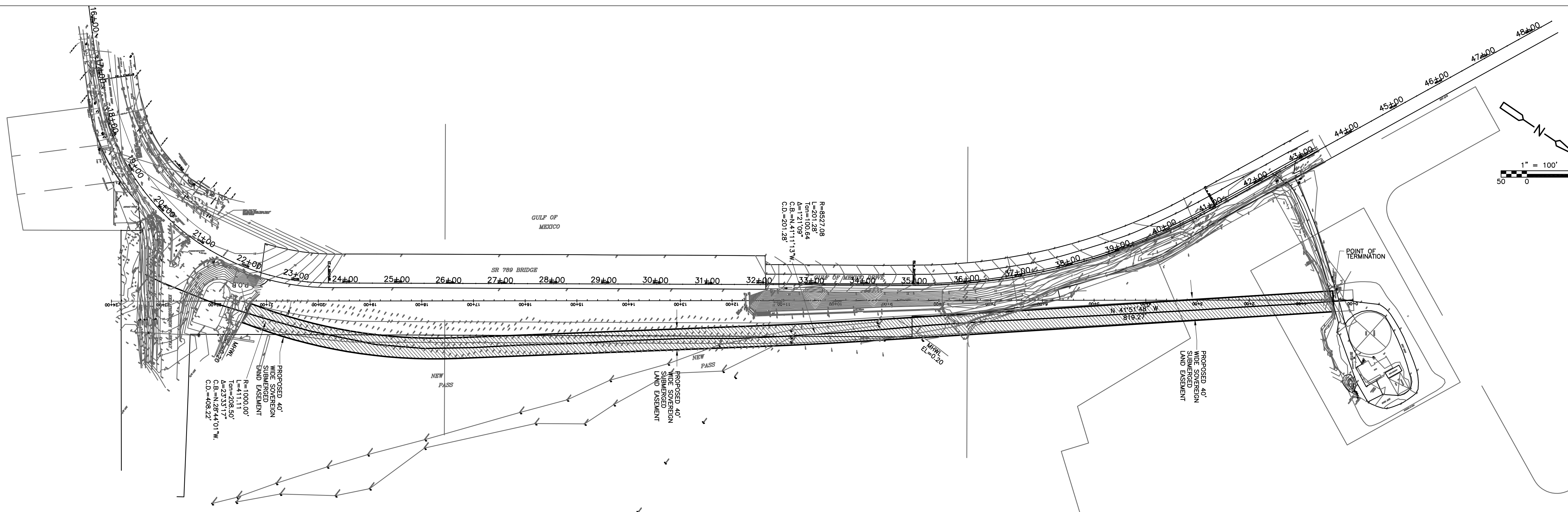
DESIGNED BY: E. HEROM
DRAWN BY: D. AUST
SHEET CHK'D BY: J. HOFFMAN
CROSS CHK'D BY: W. SPRIGGS
APPROVED BY: C. TAPPAN
DATE: JULY 2007

CDM Camp Dresser & McKee Inc.
 1715 North Westshore Boulevard, Suite 875
 Tampa, Florida 33607
 Tel: 813-281-2900
 FL Cert. of Authorization No. EB-000020

TOWN OF LONGBOAT KEY, FLORIDA
PIPELINE INTERCONNECT

SITE SURVEY/KEY PLAN

PROJECT NO. 2790-46269
FILE NAME: C01STPLT.DWG
SHEET NO. C-1



RECORD DRAWINGS

THESE RECORD DRAWINGS HAVE BEEN PREPARED BASED ON INFORMATION PROVIDED BY OTHERS. THE ENGINEER HAS NOT VERIFIED THE ACCURACY OF THIS INFORMATION AND SHALL NOT BE RESPONSIBLE FOR ANY ERRORS OR OMISSIONS THAT MAY BE INCORPORATED AS A RESULT.

CAMP DRESSER & MCKEE INC. Date: JUNE 2009

RECORD DRAWING

Xref's: [IBKTYT, 121908-EASEMENT, CE_SURVEY,] Images: []
 File name: P:\2790\46269\Pipe Record\Civil\0002a2STPL.dwg Last saved by: AUSTUD Time: 6/11/2009 3:20:59 PM

REV. NO.	DATE	DRWN	CHKD	REMARKS
6/09	JDA	JAH		RECORD DRAWINGS

DESIGNED BY: E. HEROM
 DRAWN BY: D. AUST
 SHEET CHK'D BY: J. HOFFMAN
 CROSS CHK'D BY: W. SPRIGGS
 APPROVED BY: C. TAPPAN
 DATE: JULY 2007

CDM Camp Dresser & McKee Inc.
 consulting engineering construction operations
 1715 North Westshore Boulevard, Suite 875
 Tampa, Florida 33607
 Tel: 813-281-2900
 FL Cert. of Authorization No. EB-000020

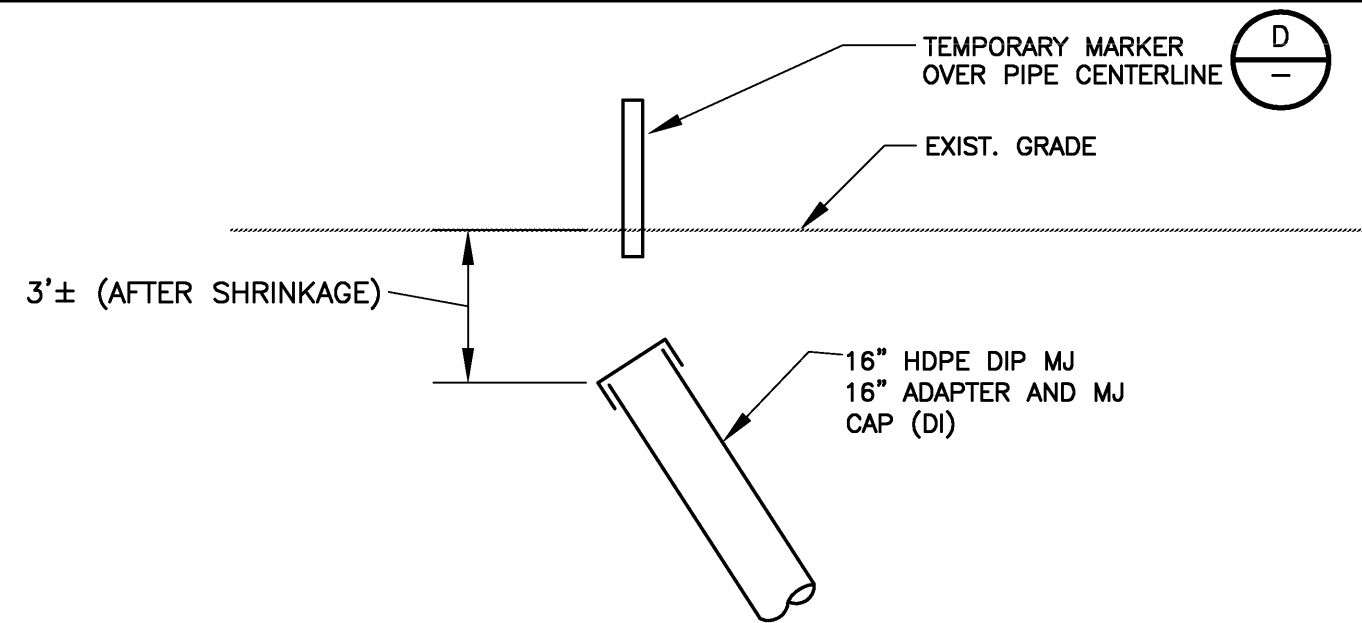
TOWN OF LONGBOAT KEY, FLORIDA
PIPELINE INTERCONNECT

SITE SURVEY/KEY PLAN

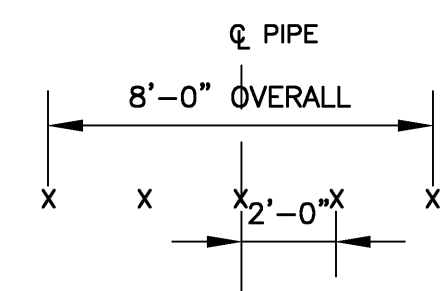
ELWOOD G. HEROM
 P.E. NO. 57476

PROJECT NO. 2790-46269
 FILE NAME: C01STPLT.DWG

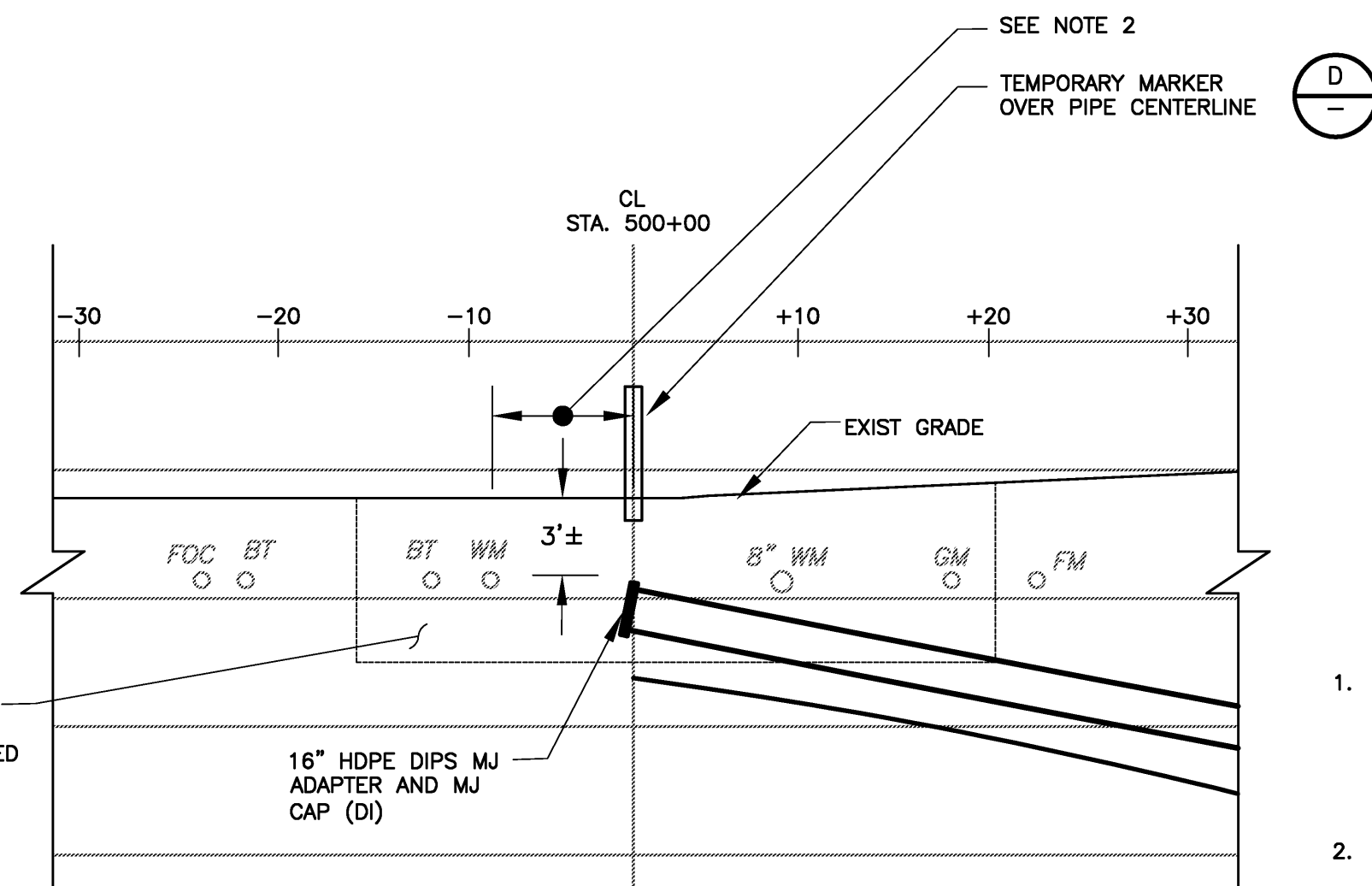
SHEET NO.
C-2



DETAIL A
NTS C-7

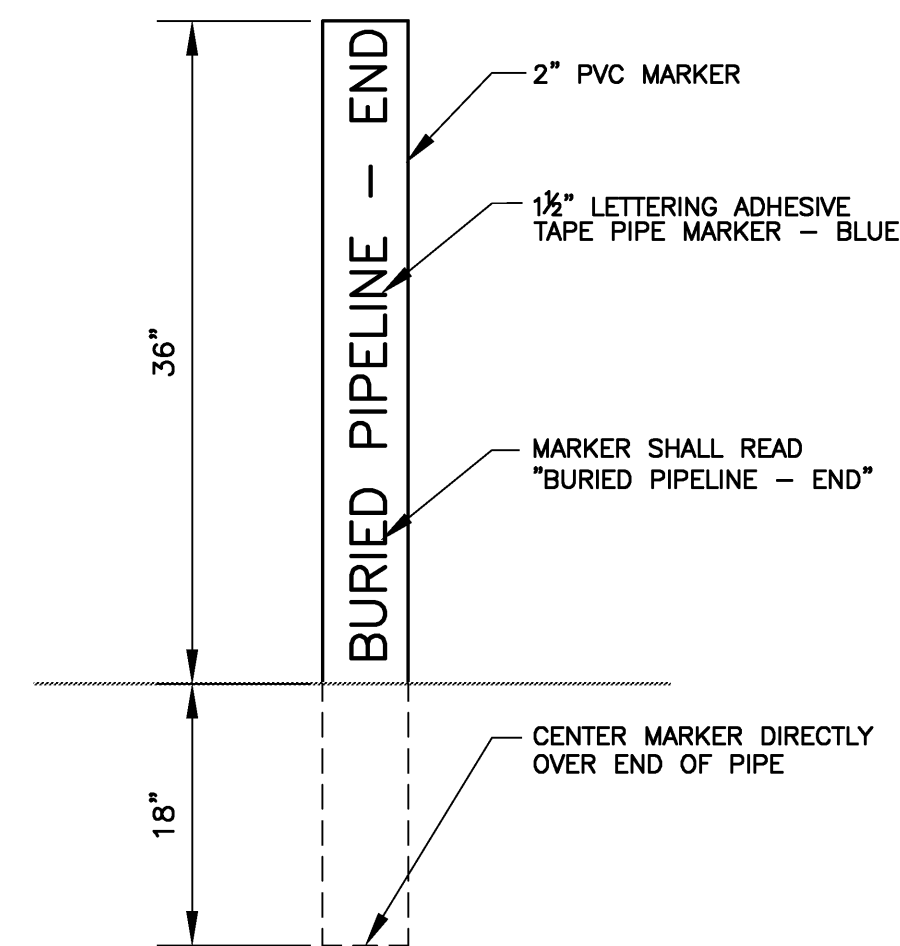


SETTLEMENT MONITORING LOCATION LAYOUT
DETAIL B
NTS C-3

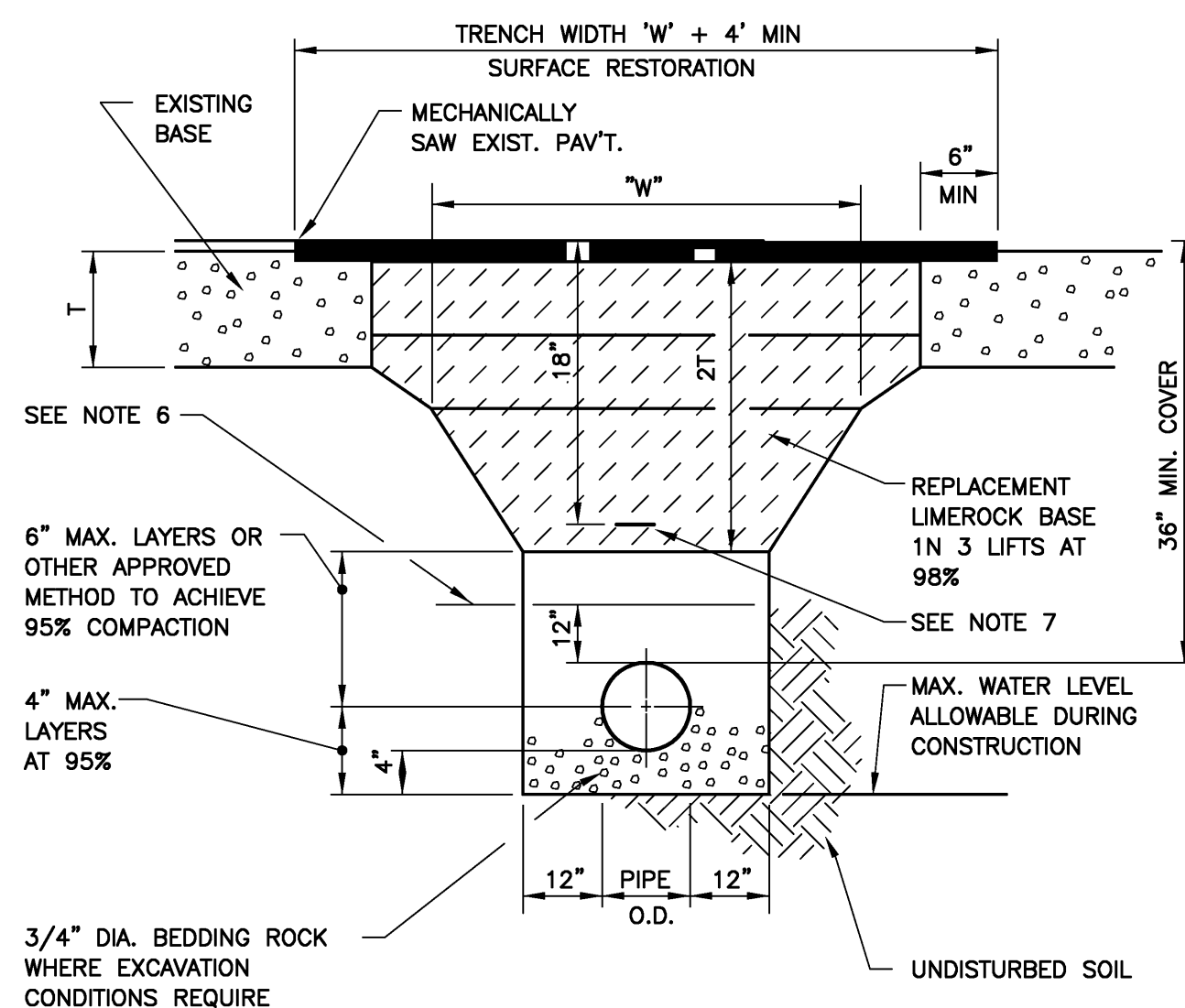


DETAIL C
NTS C-2

- NOTES:**
- UTILITIES SHOWN ARE NOT TO SCALE. CONTRACTOR SHALL FIELD LOCATE AND PROTECT ALL EXISTING UTILITIES. VISUAL CONFIRMATION IS REQUIRED.
 - MAINTAIN 70" CLEARANCE BETWEEN MJ ADAPTER AND NEAREST UTILITY. NOTIFY ENGINEER IF FIELD CONDITIONS DO NOT ALLOW 70" CLEAR SPACE.



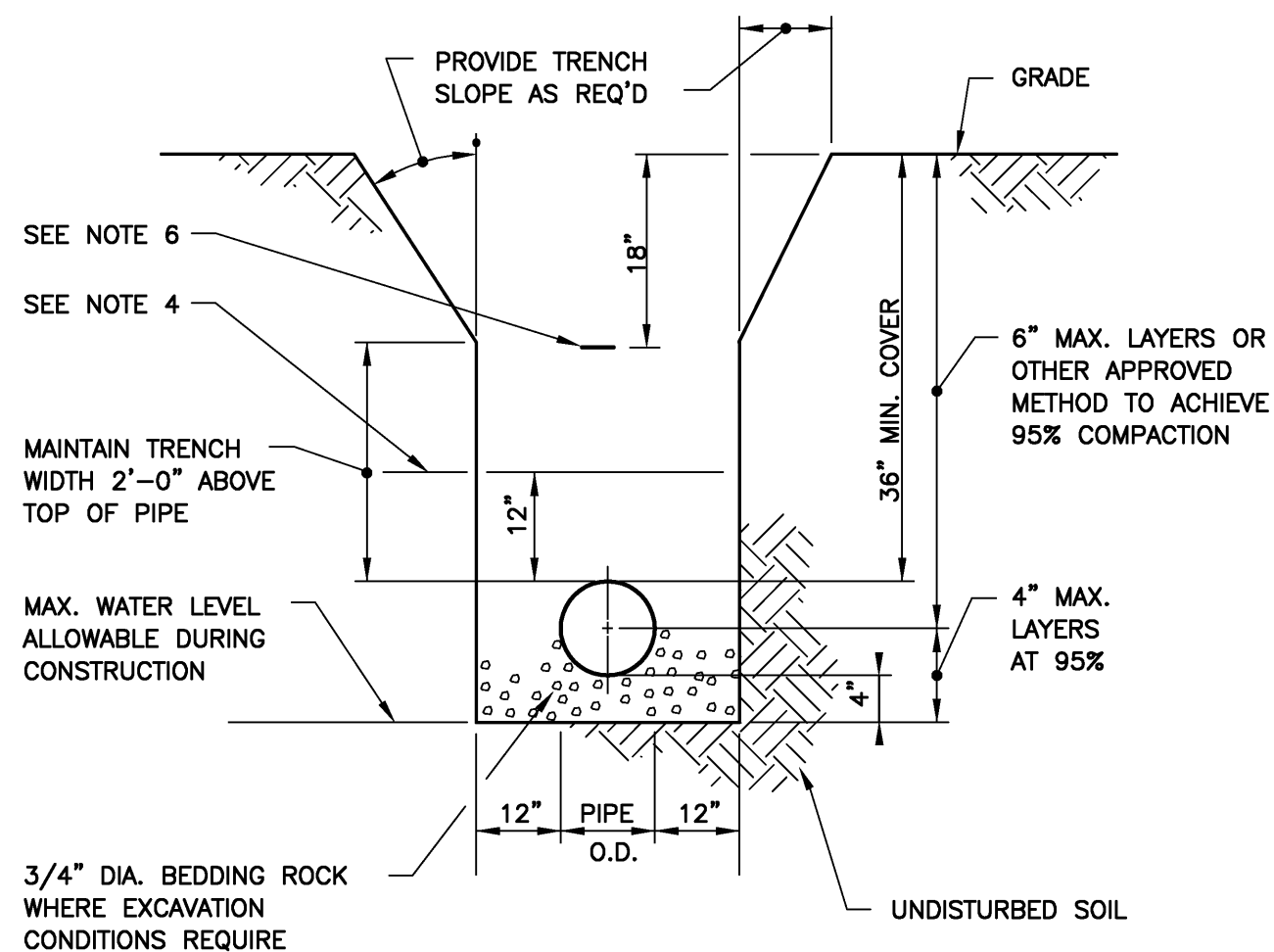
DETAIL D
NTS



(PAVED AREAS)
TRENCH
DETAIL H
NTS

NOTES:

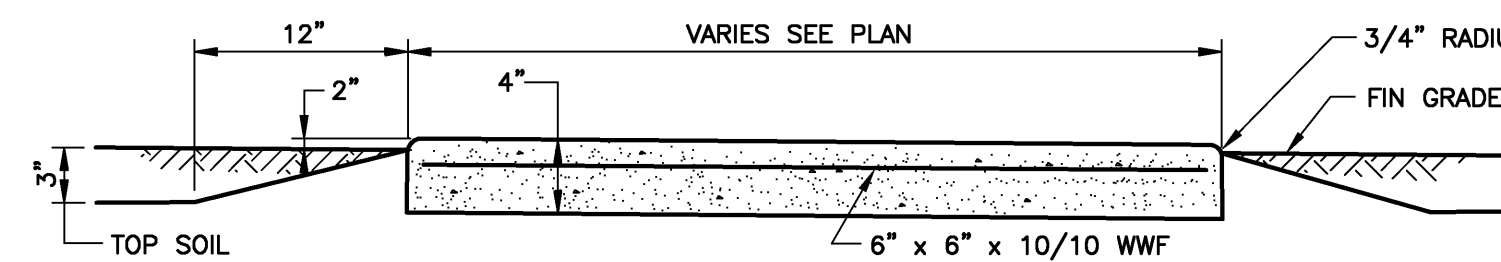
- WHERE SOIL CONDITIONS CAN NOT BE MAINTAINED AS SHOWN ABOVE, PROVIDE ALTERNATE METHOD OF CONSTRUCTION TO COMPLY WITH THE FLORIDA TRENCH SAFETY ACT.
- SHEETING WILL BE REQUIRED AS DETERMINED IN THE FIELD.
- NEW SURFACING MATERIALS SHALL BE CONSISTENT WITH EXISTING AND SHALL HAVE LAPPED AND FEATHERED JOINTS (1 1/2" MIN. THK.)
- COMPACTION PERCENTAGES SHOWN REFER TO A.A.S.H.T.O. T-180.
- ALL ROADWAY RESTORATIONS SHALL COMPLY WITH THE RESPECTIVE GOVERNING AUTHORITY.
- MECHANICAL COMPACTION NOT ALLOWED BELOW THIS LEVEL.
- FOR PVC PIPE AND HDPE - INSTALL METALLIC TAPE OVER FULL LENGTH OF PIPE. SEE SPECIFICATIONS.



(UNPAVED AREAS)
TRENCH
DETAIL I
NTS

NOTES:

- WHERE SOIL CONDITIONS CAN NOT BE MAINTAINED AS SHOWN ABOVE, PROVIDE ALTERNATE METHOD OF CONSTRUCTION TO COMPLY WITH THE FLORIDA TRENCH SAFETY ACT.
- SHEETING WILL BE REQUIRED AS DETERMINED IN THE FIELD.
- COMPACTION PERCENTAGES SHOWN REFER TO A.A.S.H.T.O. T-180.
- MECHANICAL COMPACTION NOT ALLOWED BELOW THIS LEVEL.
- PVC PIPE TO HAVE ROCK BACKFILL TO C OF PIPE.
- FOR PVC PIPE AND HDPE - INSTALL METALLIC TAPE OVER FULL LENGTH OF PIPE. SEE SPECIFICATIONS.



WALK SECTION
DETAIL J
NTS

NOTE:

CONSTRUCT SIDE WALK JOINTS PER FDOT INDEX 310

RECORD DRAWINGS

THESE RECORD DRAWINGS HAVE BEEN PREPARED BASED ON INFORMATION PROVIDED BY OTHERS. THE ENGINEER HAS NOT VERIFIED THE ACCURACY OF THIS INFORMATION AND SHALL NOT BE RESPONSIBLE FOR ANY ERRORS OR OMISSIONS WHICH MAY BE INCORPORATED HEREIN AS A RESULT.
CAMP DRESSER & MCKEE INC. Date JUNE 2009

ELWOOD G. HEROM
P.E. NO. 57476

RECORD DRAWING

MISCELLANEOUS DETAILS

PROJECT NO. 2790-46269
FILE NAME: Cddtdcd1.dwg

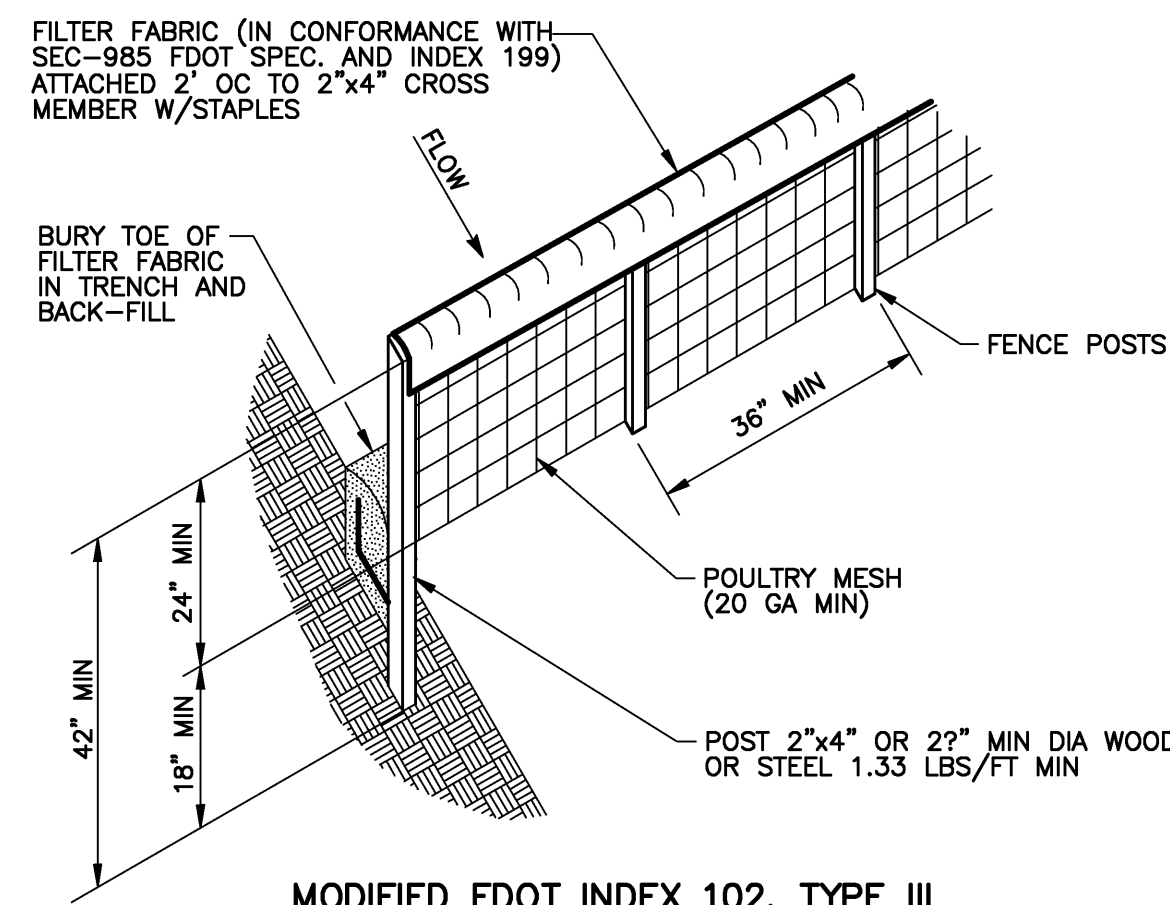
SHEET NO.
CD-1

DESIGNED BY: E. HEROM
DRAWN BY: D. AUST
SHEET CHK'D BY: J. HOFFMAN
CROSS CHK'D BY: W. SPRIGGS
APPROVED BY: C. TAPPAN
DATE: JULY 2007

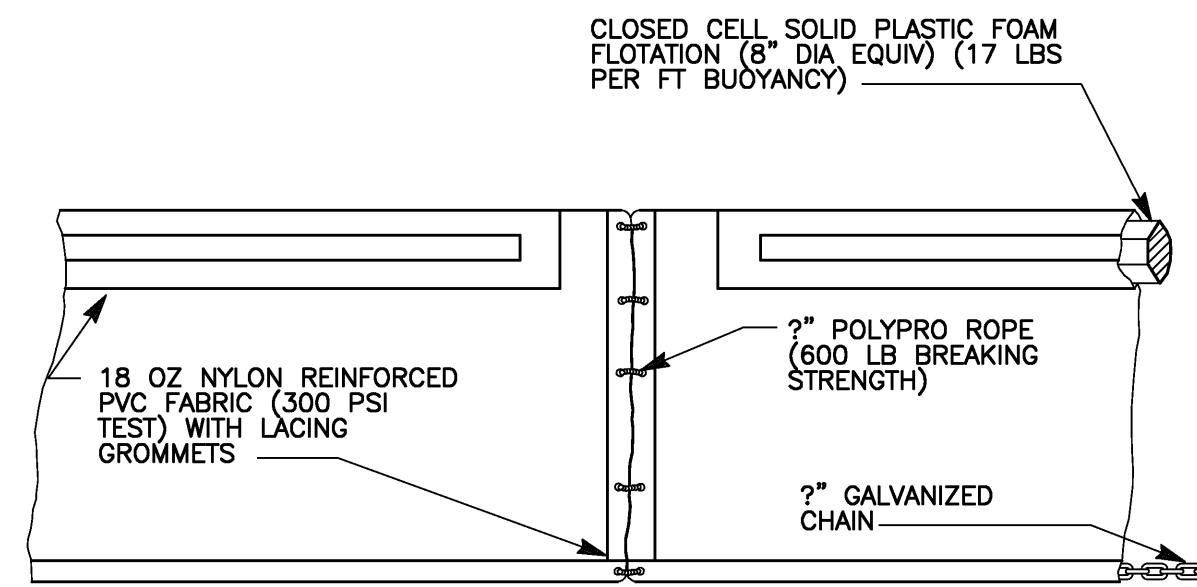
CDM Camp Dresser & McKee Inc.
1715 North Westshore Boulevard, Suite 875
Tampa, Florida 33607
Tel: 813-281-2900
FL Cert. of Authorization No. EB-0000020

TOWN OF LONGBOAT KEY, FLORIDA
PIPELINE INTERCONNECT

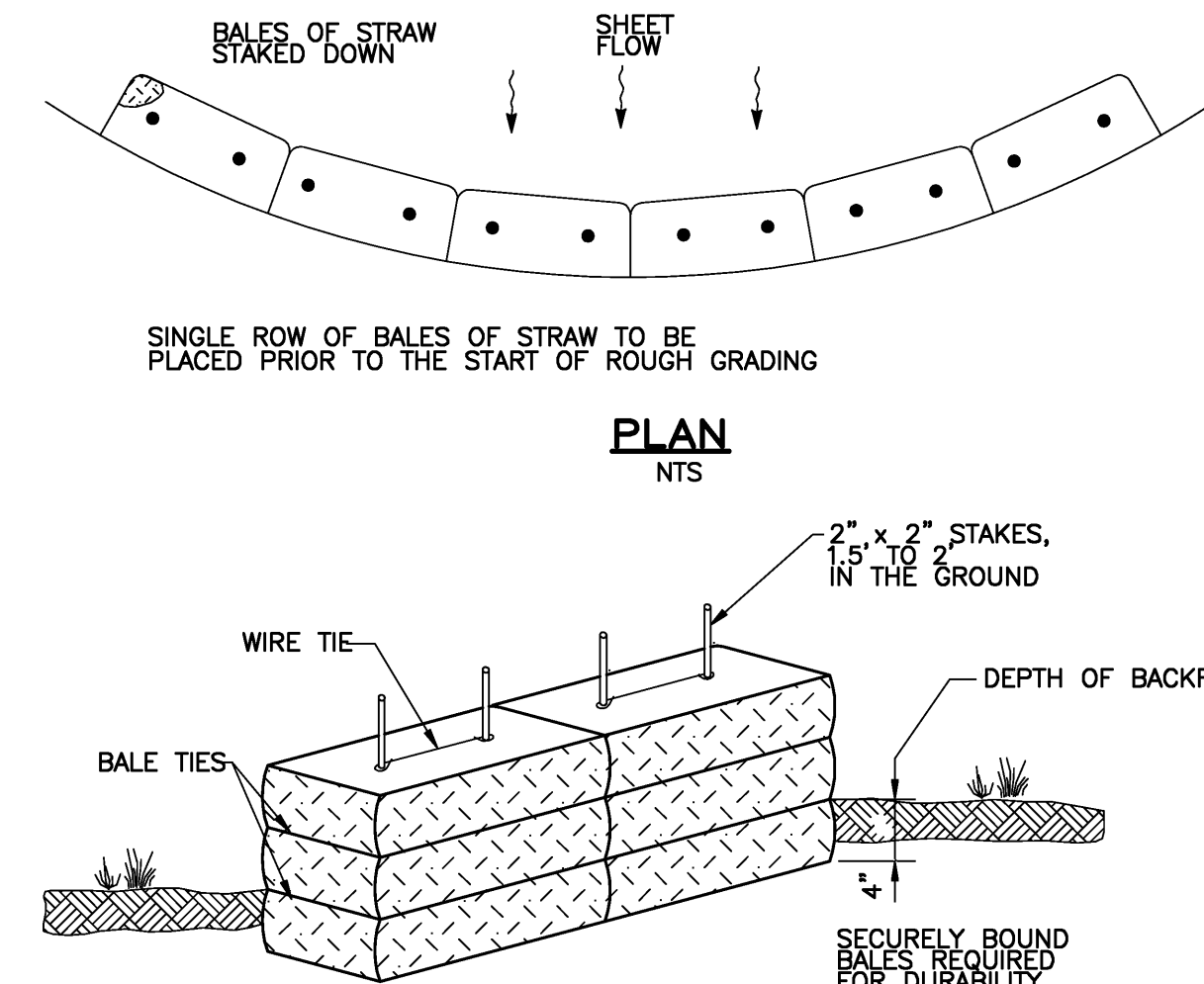
REV. NO.	DATE	DRWN	CHKD	REMARKS
06/09	JDA	JAH		RECORD DRAWINGS



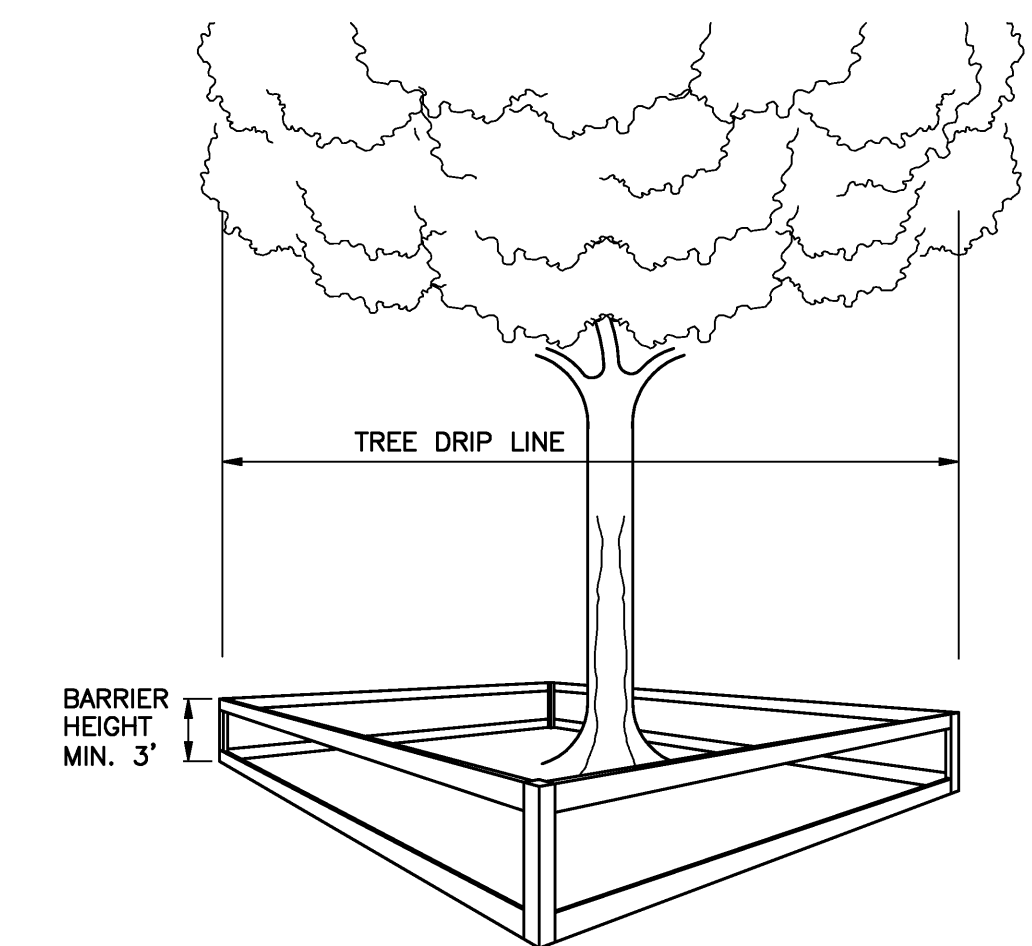
**MODIFIED FDOT INDEX 102, TYPE III
STAKED SILT FENCE**
DETAIL A
NTS



**FDOT INDEX 103 TYPE II
FLOATING TURBIDITY BARRIER**
DETAIL B
NTS



**FDOT INDEX 102, TYPE II
TEMPORARY STRAW BALE SEDIMENT BARRIER**
DETAIL C
NTS



TREE PROTECTION BARRICADE SPECIFICATIONS:

- CONTRACTOR TO COMPLY WITH ALL LOCAL TREE ORDINANCES IN ADDITION TO THE SPECIFICATIONS NOTED BELOW.
- FOUR CORNER UPRIGHT STAKES OF NO LESS THAN 2" X 2" LUMBER CONNECTED BY HORIZONTAL MEMBERS OF NO LESS THAN 1" X 4" LUMBER; OR UPRIGHT STAKES SPACED AT 4-5' INTERVALS OF NO LESS THAN 2" X 2" LUMBER CONNECTED BY TWINE FLAGGED WITH PLASTIC SURVEYING TAPE AT REGULAR INTERVALS.
- REQUIRED BARRICADES AND FLAGGING SHALL BE ERECTED BY THE CONTRACTOR AND APPROVED BY THE ENGINEER PRIOR TO COMMENCEMENT OF LAND ALTERATION ACTIVITIES. BARRICADES SHALL REMAIN IN PLACE UNTIL ALTERATION AND CONSTRUCTION ACTIVITIES ARE COMPLETED.
- DURING LAND ALTERATION AND CONSTRUCTION ACTIVITIES, IT SHALL BE UNLAWFUL TO REMOVE VEGETATION BY GRUBBING OR TO PLACE SOIL DEPOSITS, DEBRIS, SOLVENTS, CONSTRUCTION MATERIAL, MACHINERY OR OTHER EQUIPMENT OF ANY KIND WITHIN THE DRIPLINE OF A TREE TO REMAIN ON THE SITE UNLESS OTHERWISE APPROVED BY THE ENGINEER.
- LAND ALTERATION ACTIVITIES SHALL NOT UNNECESSARILY REMOVE EXISTING VEGETATION AND ALTER EXISTING TOPOGRAPHY.

TREE PROTECTION BARRICADE
DETAIL D
NTS

NOTES:

EROSION CONTROL

IT IS THE CONTRACTORS RESPONSIBILITY TO IMPLEMENT THE EROSION AND TURBIDITY CONTROLS AS SHOWN ON THE EROSION AND TURBIDITY CONTROL PLAN. IT IS ALSO THE CONTRACTORS RESPONSIBILITY TO ENSURE THESE CONTROLS ARE PROPERLY INSTALLED, MAINTAINED AND FUNCTIONING PROPERLY TO PREVENT TURBID OR POLLUTED WATER FROM LEAVING THE PROJECT SITE. THE CONTRACTOR WILL ADJUST THE EROSION AND TURBIDITY CONTROLS SHOWN ON THE EROSION AND TURBIDITY CONTROL PLAN AND ADD ADDITIONAL CONTROL MEASURES, AS REQUIRED, TO ENSURE THE SITE MEETS ALL FEDERAL, STATE AND LOCAL EROSION AND TURBIDITY CONTROL REQUIREMENTS. THE FOLLOWING BEST MANAGEMENT PRACTICES WILL BE IMPLEMENTED BY THE CONTRACTOR AS REQUIRED BY THE EROSION AND TURBIDITY CONTROL PLAN AND AS REQUIRED SITE BY THE REGULATORY AGENCIES.

- SEDIMENT BASINS AND TRAPS, PERIMETER DITCHES, SEDIMENT BARRIERS AND OTHER MEASURES INTENDED TO TRAP SEDIMENT SHALL BE CONSTRUCTED AS A FIRST STEP BEFORE ANY LAND-DISTURBING TAKES PLACE.
- ALL SEDIMENT CONTROL MEASURES ARE TO BE ADJUSTED TO MEET FIELD CONDITIONS AT THE TIME OF CONSTRUCTION AND BE CONSTRUCTED PRIOR TO ANY GRADING OR DISTURBANCE OF EXISTING SURFACE MATERIAL ON BALANCE OF SITE. PERIMETER SEDIMENT BARRIERS SHALL BE CONSTRUCTED TO PREVENT SEDIMENT OR TRASH FROM FLOWING OR FLOATING ON TO ADJACENT PROPERTIES.
- DURING CONSTRUCTION OF THE PROJECT, SOIL STOCK PILES SHALL BE STABILIZED OR PROTECTED WITH SEDIMENT TRAPPING MEASURES. THE CONTRACTOR IS RESPONSIBLE FOR THE TEMPORARY PROTECTIONS AND PERMANENT STABILIZATION OF ALL SOIL STOCKPILES ON SITE AS WELL AS SOIL INTENTIONALLY TRANSPORTED FROM THE PROJECT SITE.
- AFTER ANY SIGNIFICANT RAINFALL SEDIMENT CONTROL STRUCTURES WILL BE INSPECTED FOR INTEGRITY. ANY DAMAGED DEVICES SHALL BE REPAIRED IMMEDIATELY.
- CONCENTRATED RUNOFF SHALL NOT FLOW DOWN CUT OR FILL SLOPES UNLESS CONTAINED WITHIN AN ADEQUATE TEMPORARY OR PERMANENT CHANNEL, FLUME OR SLOPE DRAIN STRUCTURE.
- WHENEVER WATER SEEPS FROM A SLOPE FACE ADEQUATE DRAINAGE OR OTHER PROTECTION SHALL BE PROVIDED.
- SEDIMENT WILL BE PREVENTED FROM ENTERING ANY STORM DRAIN SYSTEM, DITCH, OR CHANNEL. ALL STORM SEWER INLETS THAT ARE MADE OPERABLE DURING CONSTRUCTION SHALL BE PROTECTED SO THAT SEDIMENT-LADEN WATER CANNOT ENTER THE CONVEYANCE SYSTEM WITHOUT FIRST BEING FILTERED OR OTHERWISE TREATED TO REMOVE SEDIMENT.
- BEFORE TEMPORARY OR NEWLY CONSTRUCTED STORMWATER CONVEYANCE CHANNELS ARE MADE OPERATIONAL, ADEQUATE OUTLET PROTECTION AND ANY REQUIRED TEMPORARY OR PERMANENT CHANNEL LINING SHALL BE INSTALLED IN BOTH THE CONVEYANCE CHANNEL AND RECEIVING CHANNEL.
- WHEN WORK IN A LIVE WATERCOURSE IS PERFORMED, PRECAUTIONS SHALL BE TAKEN TO MINIMIZE ENRICHMENT. CONTROL SEDIMENT TRANSPORT AND STABILIZE THE WORK AREA TO THE GREATEST EXTENT POSSIBLE DURING CONSTRUCTION. NONERODIBLE MATERIAL SHALL BE USED FOR THE CONSTRUCTION OF CAUSEWAYS AND COFFERDAMS. EARTHEN FILL MAY BE USED FOR THESE STRUCTURES IF ARMORED BY NONERODIBLE COVER MATERIALS.
- STOCKPILING MATERIAL: NO EXCAVATED MATERIAL SHALL BE STOCKPILED IN SUCH A MANNER AS TO DIRECT RUNOFF DIRECTLY OFF THE PROJECT SITE INTO ANY ADJACENT WATER BODY OR STORM WATER COLLECTION FACILITY.
- EXPOSED AREA LIMITATION: THE SURFACE AREA OF OPEN, RAW ERODIBLE SOIL EXPOSED BY CLEARING AND GRUBBING OPERATIONS OR EXCAVATION AND FILLING OPERATIONS SHALL NOT EXCEED 1 ACRE. IF THE TOTAL AREA TO BE CLEARED IS EQUAL TO, OR EXCEEDS ONE (1) ACRE, THEN THE CONTRACTOR WILL BE RESPONSIBLE FOR PREPARING A STORMWATER POLLUTION PREVENTION PLAN (SWPPP) IN ACCORDANCE WITH EPA'S NPDES REGULATIONS. THE CONTRACTOR WILL BE RESPONSIBLE FOR SUBMITTING A NOTICE OF INTENT (NOI) TO EPA FORTH-EIGHT (48) HOURS PRIOR TO COMMENCING CONSTRUCTION.

- TEMPORARY SEEDING: AREAS OPENED BY CONSTRUCTION OPERATIONS AND THAT ARE NOT ANTICIPATED TO BE RE-EXCAVATED OR DRESSED AND RECEIVE FINAL GRASSING TREATMENT WITHIN 30 DAYS SHALL BE SEEDED WITH A QUICK GROWING GRASS SPECIES WHICH WILL PROVIDE AN EARLY COVER DURING THE SEASON IN WHICH IT IS PLANTED AND WILL NOT LATER COMPETE WITH THE PERMANENT GRASSING.
- TEMPORARY SEEDING AND MULCHING: SLOPES STEEPER THAN 6:1 THAT FALL WITHIN THE CATEGORY ESTABLISHED IN PARAGRAPH 12 ABOVE. LOOSE MEASURE OF MULCH MATERIAL CUT INTO THE SOIL OF THE SEEDED AREA ADEQUATE TO PREVENT MOVEMENT OF SEED AND MULCH.
- TEMPORARY GRASSING: THE SEEDED OR SEEDED AND MULCHED AREA(S) SHALL BE ROLLED AND WATERED OR HYDROMULCHED OR OTHER SUITABLE METHODS IF REQUIRED TO ASSURE OPTIMUM GROWING CONDITIONS FOR THE ESTABLISHMENT OF A GOOD GRASS COVER. TEMPORARY GRASSING SHALL BE THE SAME MIX & AMOUNT REQUIRED FOR PERMANENT GRASSING IN THE CONTRACT SPECIFICATIONS.
- TEMPORARY REGRASSING: IF, AFTER 14 DAYS FROM SEEDING, THE TEMPORARY GRASSED AREAS HAVE NOT ATTAINED A MINIMUM OF 75 PERCENT GOOD GRASS COVER, THE AREA WILL BE REWORKED AND ADDITIONAL SEED APPLIED SUFFICIENT TO ESTABLISH THE DESIRED VEGETATIVE COVER.
- MAINTENANCE: ALL FEATURES OF THE PROJECT DESIGNED AND CONSTRUCTED TO PREVENT EROSION AND SEDIMENT SHALL BE MAINTAINED DURING THE LIFE OF THE CONSTRUCTION SO AS TO FUNCTION AS THEY WERE ORIGINALLY DESIGNED AND CONSTRUCTED.
- PERMANENT EROSION CONTROL: THE EROSION CONTROL FACILITIES OF THE PROJECT SHOULD BE DESIGNED TO MINIMIZE THE IMPACT ON THE OFFSITE FACILITIES.
- PERMANENT SEEDING: ALL AREAS WHICH HAVE BEEN DISTURBED BY CONSTRUCTION WILL, AS A MINIMUM, BE SEEDED. THE SEEDING MIX MUST PROVIDE BOTH LONG-TERM VEGETATION AND RAPID GROWTH SEASONAL VEGETATION. SLOPES STEEPER THAN 4:1 SHALL BE SEEDED AND MULCHED OR SODDED.
- ALL SLOPES STEEPER THAN 3:1 SHALL BE SODDED.

RECORD DRAWINGS

THESE RECORD DRAWINGS HAVE BEEN PREPARED BASED ON INFORMATION PROVIDED BY OTHERS. THE ENGINEER HAS NOT VERIFIED THE ACCURACY OF THIS INFORMATION AND SHALL NOT BE RESPONSIBLE FOR ANY ERRORS OR OMISSIONS WHICH MAY BE INCORPORATED HEREIN AS A RESULT.

CAMP DRESSER & MCKEE INC. Date JUNE 2009

ELWOOD G. HEROM
P.E. NO. 57476

RECORD DRAWING

MISCELLANEOUS DETAILS

PROJECT NO. 2790-46269
FILE NAME: Csdtdcd4.dwg

SHEET NO.
CD-2

DESIGNED BY: E. HEROM
DRAWN BY: D. AUST
SHEET CHK'D BY: J. HOFFMAN
CROSS CHK'D BY: W. SPRIGGS
APPROVED BY: C. TAPPAN
DATE: JULY 2007

CDM Camp Dresser & McKee Inc.
1715 North Westshore Boulevard, Suite 875
Tampa, Florida 33607
Tel: 813-281-2900
FL Cert. of Authorization No. EB-0000020

TOWN OF LONGBOAT KEY, FLORIDA
PIPELINE INTERCONNECT

REV. NO.	DATE	DRWN	CHKD	REMARKS
06/09	JDA	JAH		RECORD DRAWINGS