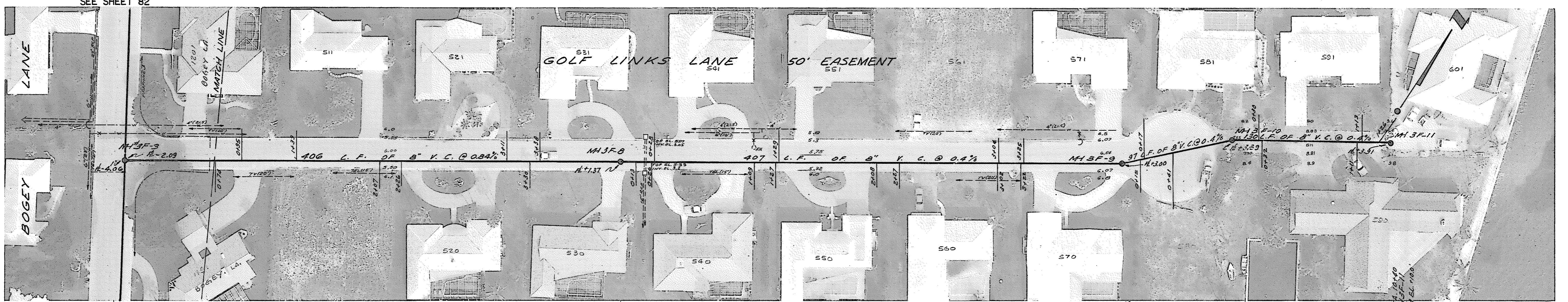
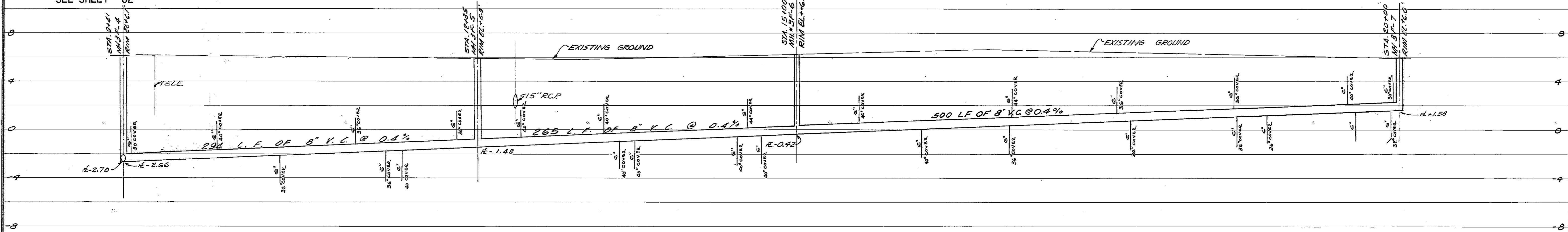
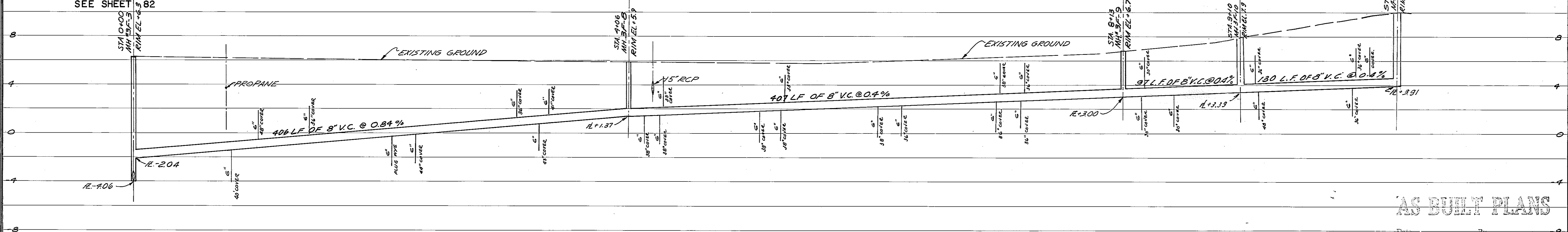


SEE SHEET 82



SEE SHEET 82



AS BUILT PLANS

DESIGNED BY J. DAVID WEARE, P.E. SEPT. 1972	DATE 4-13-73	BY LDL	REVISION DELETED MH 3F-4 FROM PROFILE RELOCATED SEWER ALIGNMENT, 3' ABOVE SERVICE, ON PUTTER LANE & GOLF LINKS LANE	FOR TOWN OF LONGBOAT KEY, FLORIDA	DATE 7-23-73	DATE 8-18-75	DATE 12-17-75
APPROVED BY J. DAVID WEARE, P.E. FLORIDA REG. NO. 10151	CHECKED BY J. G. MANN	PC/M	PROJECT NO. 1217-S	PROJECT PUTTER LANE, GOLF LINKS LANE WASTEWATER COLLECTION SYSTEM	LTR. A	LTR. B	INDEX NO. E-1217-288
SHEET NUMBER 84				SMALLY, WELLFORD & NALVEN—CONSULTING ENGINEERS—SARASOTA, FLORIDA			