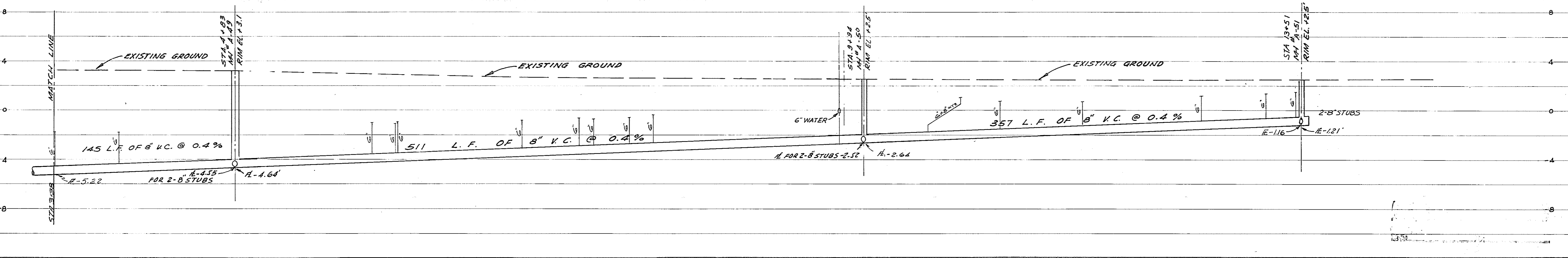
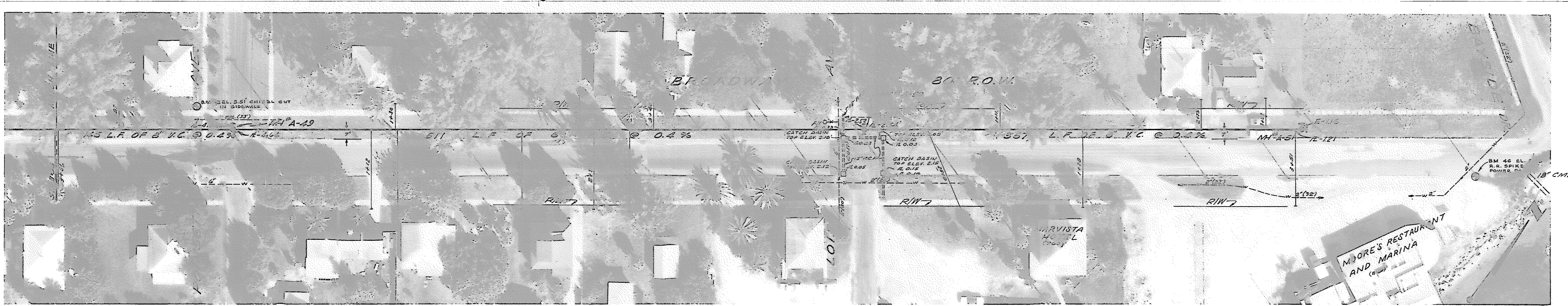
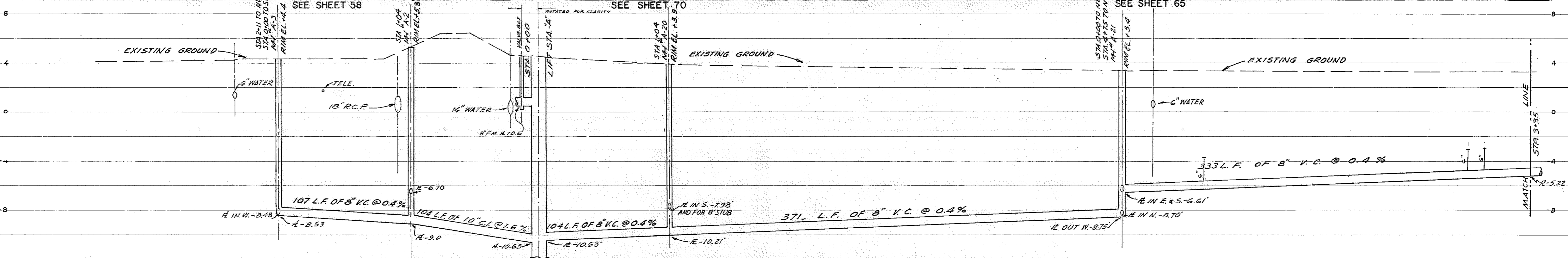


SEE SHEET 62

SEE SHEET 63



DESIGNED BY	PHOTO AERIAL SURVEY	DATE	4-13-73	BY	L.D.L.
CHECKED BY	J.O.M., E.M.W.	DATE	4-13-73	BY	P.C.W.
PROJECT NO.	1217-S	DATE	9-19-77	BY	A.M.V.
APPROVED BY	J. DAVID WEAVER, P.E.	DATE	9-19-77	BY	A.M.V.
REVISION A 7-23-73 ADDED VALVE BOX AND ROTATED FOR CLARITY B 7-24-75 CHANGED FROM 12" TO 18" R.C.P. AND CHANGED FROM 12" TO 18" R.C.P. AND CHANGED FROM 12" TO 18" R.C.P. C 9-19-77 CHANGED PIPE SIZES TO MAINTAIN AT 1.1' LOSS PER 100' (CONFORMS TO SPEC)					
TOWN OF LONGBOAT KEY, FLORIDA BROADWAY WASTE WATER COLLECTION SYSTEM SMALLY, WELLFORD & NALVEN—CONSULTING ENGINEERS—SARASOTA, FLORIDA					
SHEET NUMBER	60				
REVISION	C				

INDEX NO. E-1217-264