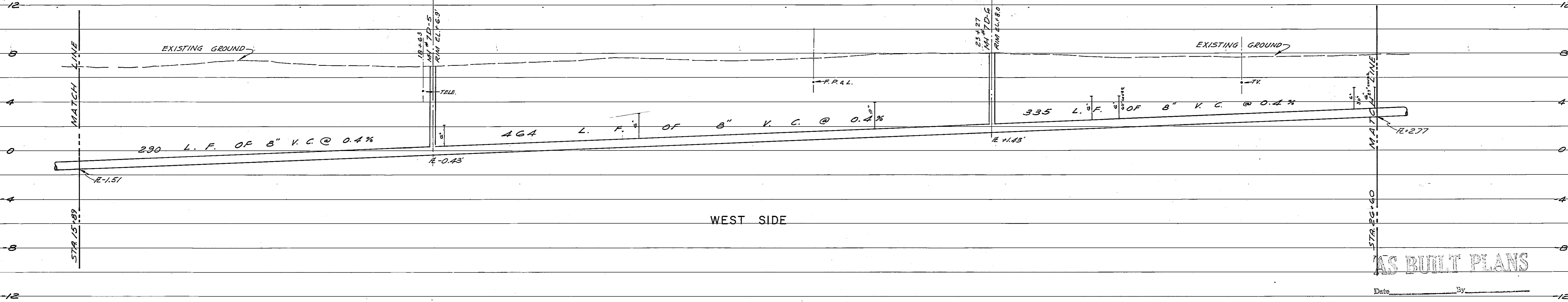
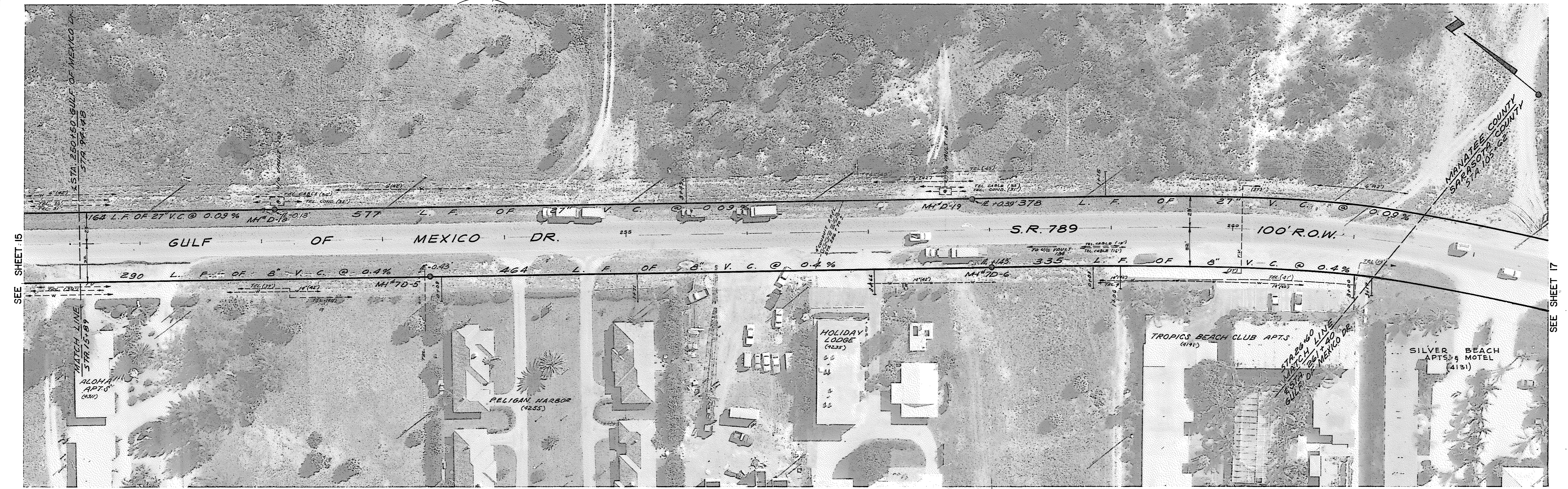


EAST SIDE



WEST SIDE

AS BUILT PLANS

FOR:	TOWN OF LONGBOAT KEY, FLORIDA
PROJECT:	GULF OF MEXICO DRIVE W. MH 7D-5 TO MH 7D-6, E. MH 18 TO MH 1D-19 WASTEWATER COLLECTION SYSTEM
DATE:	7/18/75
REVISION:	A AS BUILT RELOCATED MH D-18, D-19 & ADDED SERVICES
BY:	P.C.W.
SCALE:	HORIZ. 1" = 40' VERT. 1" = 4'
DESIGNED BY:	J.D.M., E.M.M., L.D.L.
CHECKED BY:	J.G., M.M., E.C.
PROJECT NO.:	1217-S
APPROVED BY:	[Signature]

SHEET NUMBER  
**16**  
REVISION  
A

SMALLY, WELLFORD & NALVEN—CONSULTING ENGINEERS—SARASOTA, FLORIDA