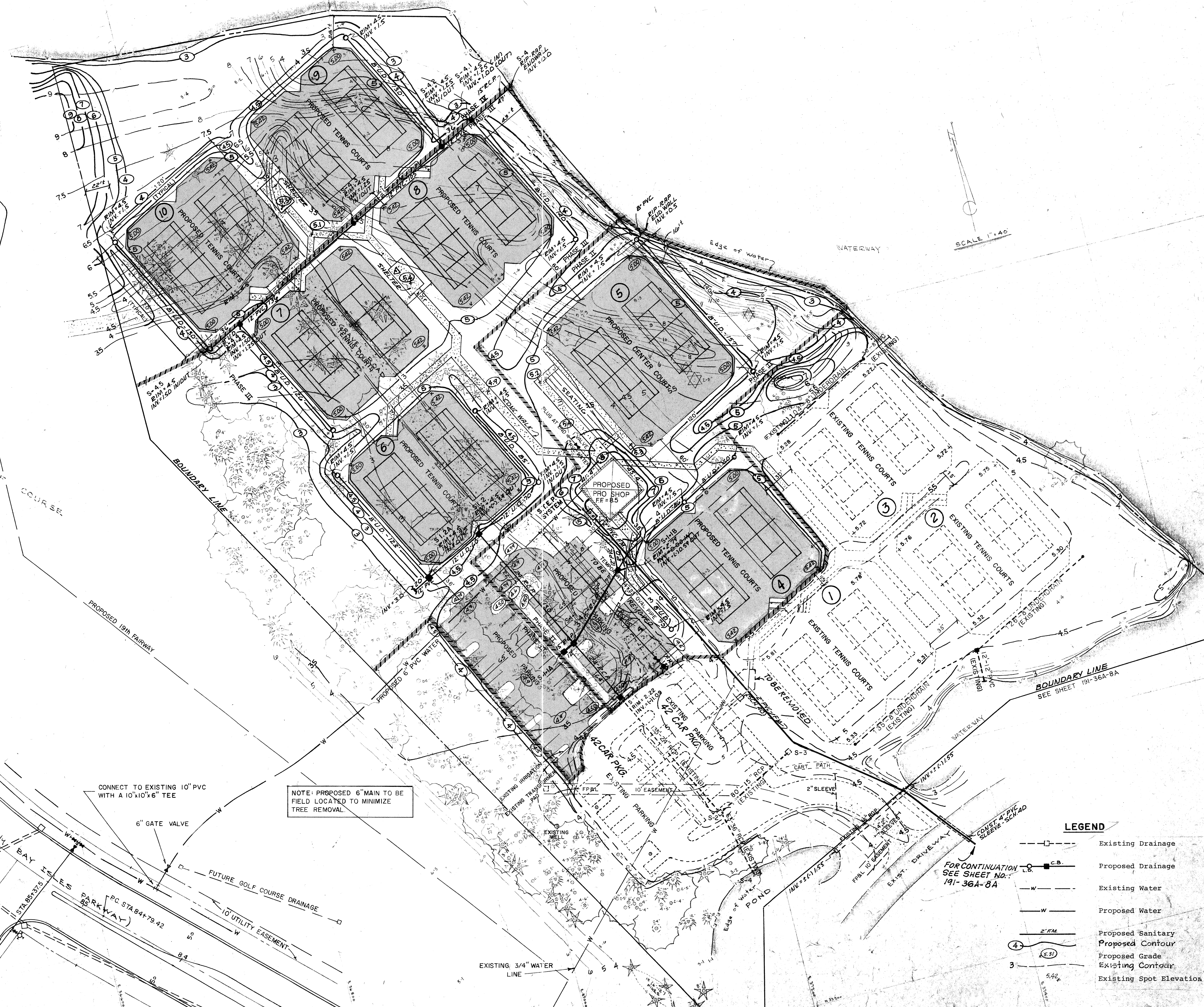


19th GREEN

PROPOSED GOLF COURSE

BENCH MARK
ELEV. 2.93

HARBORSIDE DRIVE



CONNECT TO EXISTING 10" PVC WITH A 10"x10"x6" TEE
6" GATE VALVE

NOTE: PROPOSED 6" MAIN TO BE FIELD LOCATED TO MINIMIZE TREE REMOVAL

FUTURE GOLF COURSE DRAINAGE
10' UTILITY EASEMENT

EXISTING 3/4" WATER LINE

SCALE 1"=40'

LEGEND

- Existing Drainage
- Proposed Drainage
- Existing Water
- Proposed Water
- Proposed Sanitary
- Proposed Contour
- Proposed Grade
- Existing Contour
- Existing Spot Elevation

FOR CONTINUATION
SEE SHEET NO. 191-36A-8A

BENNETT & BISHOP
CONSULTING ENGINEERS & SURVEYORS
SARASOTA, FLORIDA

DATE	SCALE	DESIGN	DRAWN	CHECK	APPROVED	DESCRIPTION
1-20-85	1"=40'					
6-17-84						ADD TENNIS COURTS, PARKING, DRIVE, PROPOSED AND EXISTING

ARVIDA CORPORATION
HARBORSIDE TENNIS CLUB - PHASE II-IV
SARASOTA, FLORIDA
AIL SITE PLAN