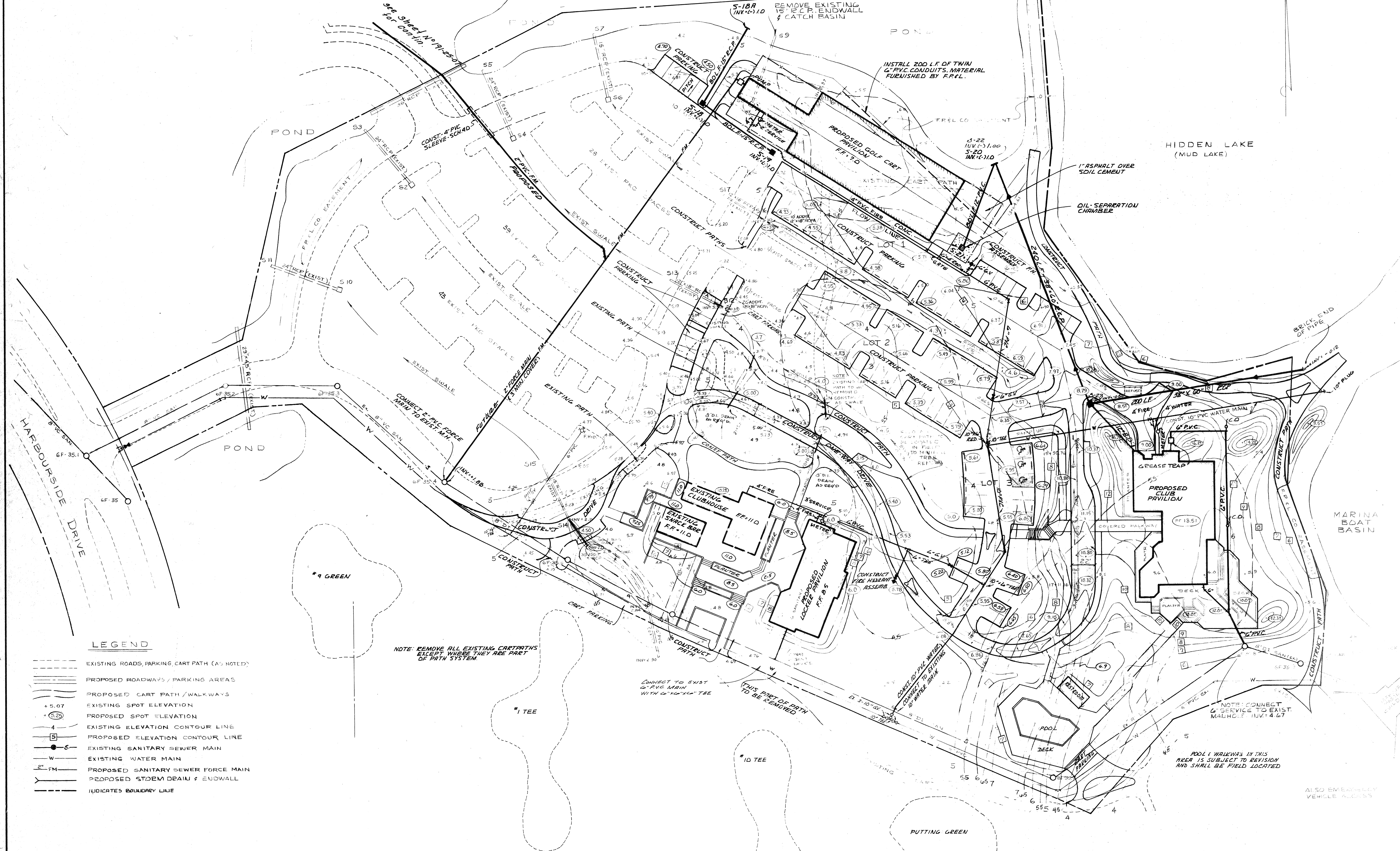


HARBORSIDE TENNIS CLUB



LEGEND

- EXISTING ROADS, PARKING, CART PATH (AS NOTED)
- PROPOSED ROADWAYS / PARKING AREAS
- PROPOSED CART PATH / WALKWAYS
- +5.07 EXISTING SPOT ELEVATION
- +5.25 PROPOSED SPOT ELEVATION
- 4 EXISTING ELEVATION CONTOUR LINE
- 5 PROPOSED ELEVATION CONTOUR LINE
- S— EXISTING SANITARY SEWER MAIN
- W— EXISTING WATER MAIN
- FM— PROPOSED SANITARY SEWER FORCE MAIN
- SD— PROPOSED STORM DRAIN & ENDWALL
- INDICATES BOUNDARY LINE

NOTE: REMOVE ALL EXISTING CARTPATHS EXCEPT WHERE THEY ARE PART OF PATH SYSTEM

CONNECT TO EXIST 10" PVC MAIN WITH 6" x 12" TEE

CONNECT TO EXIST 10" WIRE MAIN WITH 10" WIRE TEE

THIS PORT OF PATH TO BE REMOVED

NOTE: CONNECT 4" SERVICE TO EXIST. MANHOLE INV. 4.67

POOL 1 WALKWAY IN THIS AREA IS SUBJECT TO REVISION AND SHALL BE FIELD LOCATED

ALSO BEARINGLY VEHICLE ACCESS

BENNETT & BISHOP
CONSULTING ENGINEERS & SURVEYORS
TALLAHASSEE, FLORIDA

DATE	NOV. 8 1988	SCALE	1" = 40'	DESIGNED BY	REVISED BY	DATE	DESCRIPTION
NOV. 8 1988	1" = 40'	D.D.		0-10-88	ADD 2" PVC FM FROM TEE TO 5		
		D.D.		11-20-88	CHANGE 4" SERVICE LINE IN WALKWAY		
		D.D.		2-3-89	GENERAL REVISION		
		BY		1-25-89	REV ELEY DECK WALK		

APPROVED BY: *William Bishop*

ARVIDA CORPORATION
HARBORSIDE CLUB
PROPOSED DETAIL SITE PL

191-88A