

LOCATION MAP
SCALE 1"=4MILES

LEGEND

FORCE MAIN	FM
SANITARY SEWER	SAN. SEWER
WATER MAIN	
GAS MAIN	
ELECTRIC CABLE	
TELEPHONE CABLE	
CABLE TV	TV
RIGHT OF WAY LINE	R/W
OAK TREE	
PINE TREE	
PALM TREE	
BANYAN TREE (UNLESS NOTED OTHERWISE)	
MANHOLE	○
WATER VALVE	⊠
SANITARY VALVE	⊠
SPRINKLER VALVE	⊠
SPRINKLER BIB	•
FIRE HYDRANT	◇
LIGHT POLE	☆
WATER METER	⊠ WM
GTE BOX	⊠ GTE
CATCH BASIN	⊠ CB
ELECTRIC BOX	⊠ E
SIGN	△

ABBREVIATIONS

IP	IRON PIN
INV.	INVERT
T/C	TOP OF CURB
E/P	EDGE OF PAVEMENT
MES	MITERED END STRUCTURE
ERCP	ELLIPTICAL REINFORCED PIPE
GTE	GENERAL TELEPHONE AND ELECTRIC
TOB	TOP OF BANK
TOS	TOE OF SLOPE
CONC	CONCRETE
MH	MANHOLE
EL	ELEVATION

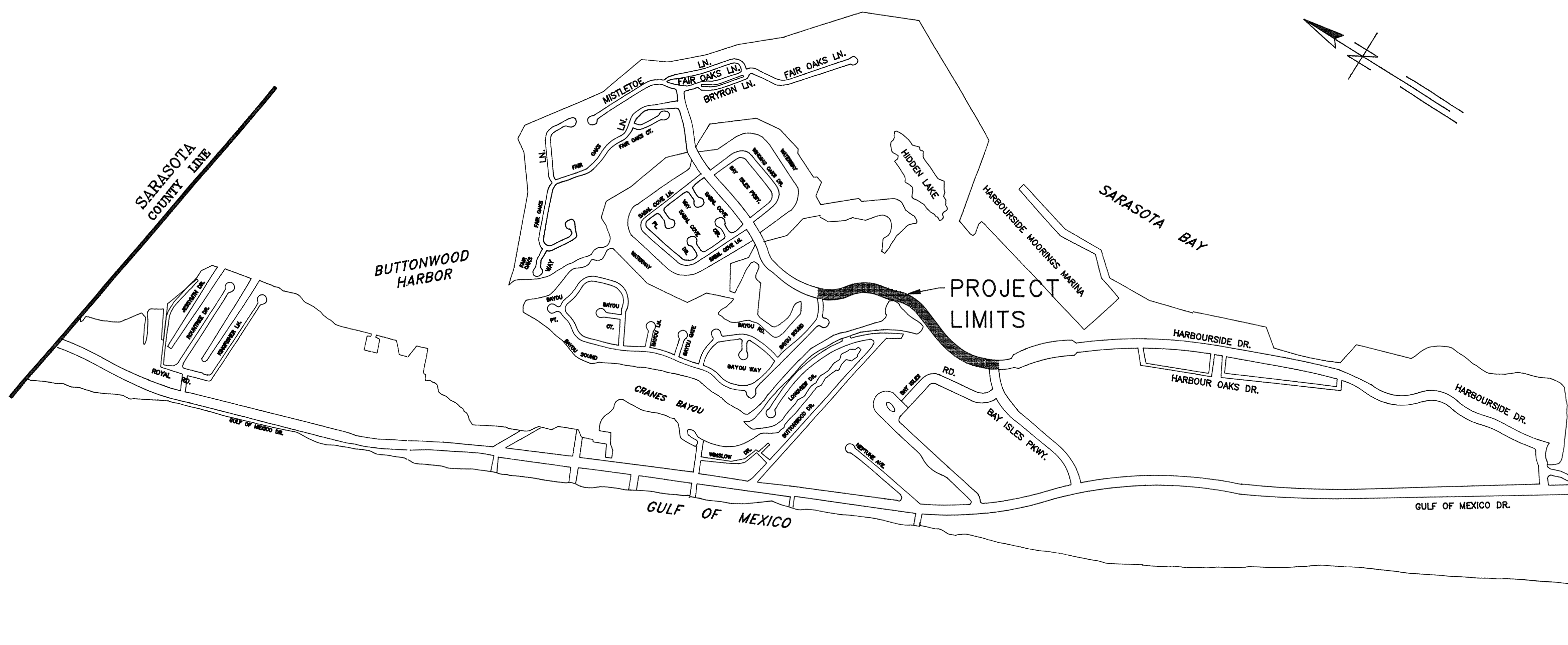
INDEX

1. LOCATION MAP, AREA MAP, INDEX, LEGEND AND ABBREVIATIONS
2. PLAN AND PROFILE
STA. 0+14.0 TO STA. 10+00.0
3. PLAN AND PROFILE
STA. 10+00.0 TO STA. 20+90.0
4. MISCELLANEOUS DETAILS

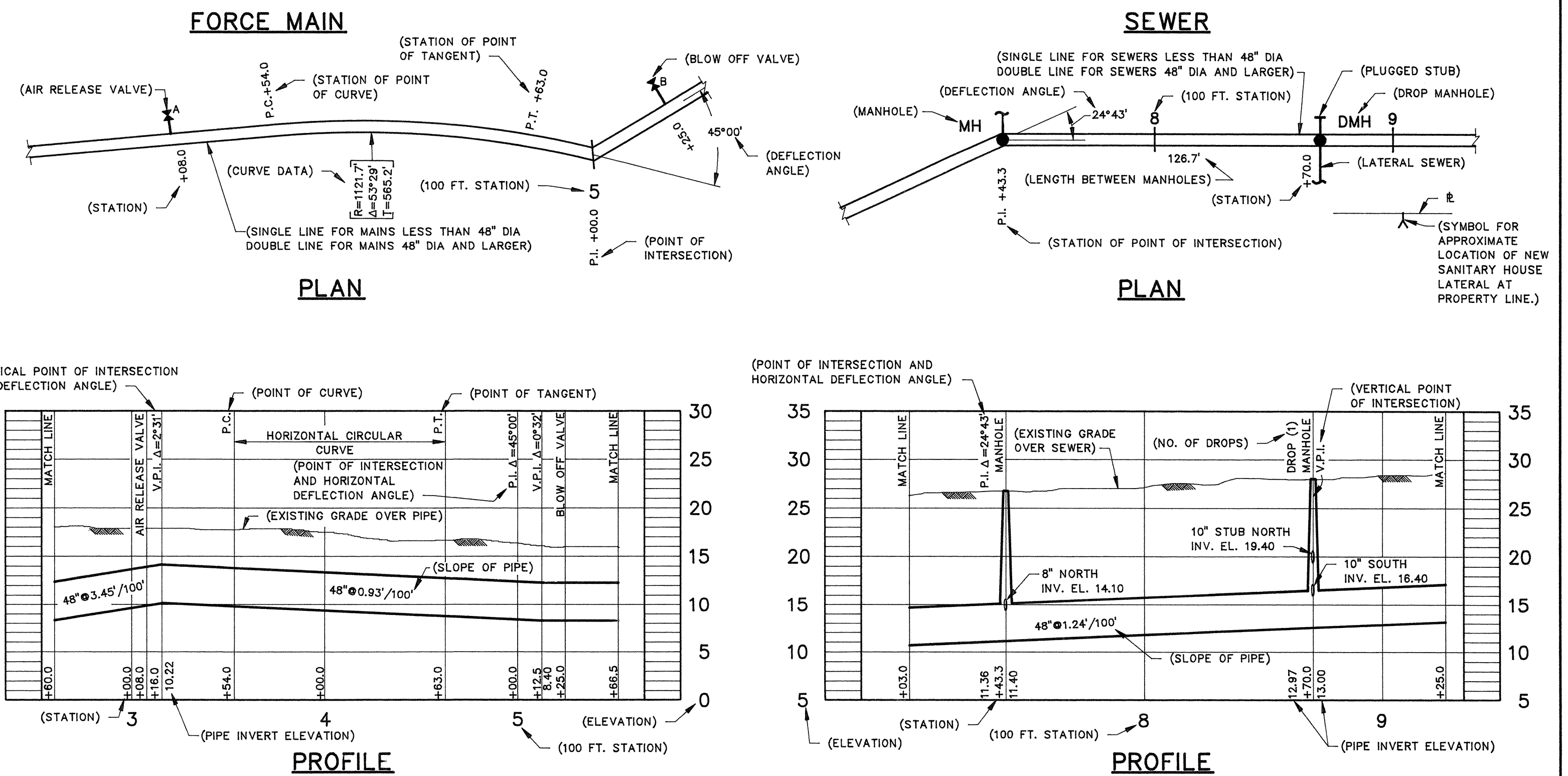
GENERAL NOTES

1. ALL ELEVATIONS ARE REFERENCED TO NATIONAL GEODETIC VERTICAL DATUM (NGVD), 1929.
2. THE CONTRACTOR SHALL INSTALL THE FORCE MAIN TO THE ELEVATIONS AND SLOPES SHOWN IN THE PROFILE WITH NO INTERMEDIATE OR NEW HIGH OR LOW POINTS.
3. ALL FORCE MAIN SHALL BE INSTALLED IN CLASS C BEDDING, UNLESS DIRECTED OTHERWISE.
4. PVC BELL AND SPIGOT JOINTS SHALL BE INSTALLED FULLY HOME WITH NO JOINT DEFLECTION. DEFLECTIONS NECESSARY TO ACCOMPLISH ALIGNMENT SHALL BE MADE IN THE PIPE BARREL IN ACCORDANCE WITH THE PIPE MANUFACTURER'S RECOMMENDATIONS.
5. LOCATIONS, ELEVATIONS AND DIMENSIONS OF EXISTING UTILITIES, STRUCTURES AND OTHER FEATURES ARE SHOWN ACCORDING TO THE BEST INFORMATION AVAILABLE AT THE TIME OF THE PREPARATION OF THESE PLANS, BUT DO NOT PURPORT TO BE ABSOLUTELY CORRECT. THE CONTRACTOR SHALL VERIFY THE LOCATIONS, ELEVATIONS AND DIMENSIONS OF ALL EXISTING UTILITIES, STRUCTURES AND OTHER FEATURES AFFECTING HIS WORK PRIOR TO CONSTRUCTION.
6. THE CONTRACTOR SHALL PROVIDE AT LEAST 48 HOURS NOTICE TO THE VARIOUS UTILITY COMPANIES IN ORDER TO PERMIT THE LOCATION OF EXISTING UNDERGROUND UTILITIES IN ADVANCE OF CONSTRUCTION. THE CONTRACTOR SHALL NOTIFY THE VARIOUS UTILITY COMPANIES BY CALLING THE SUNSHINE ONE CALL CENTER (1-800-432-4770) OR, IF NECESSARY, BY CONTACTING THE UTILITY COMPANIES INDIVIDUALLY.
7. EXISTING FORCE MAIN SHALL BE PLUGGED AT OPEN ENDS WITH CONCRETE AND ABANDONED IN PLACE AFTER NEW REPLACEMENT FORCE MAIN IS PLACED IN SERVICE.

NEW FORCE MAIN AND SEWER CONSTRUCTION



AREA MAP
SCALE 1"=1000'

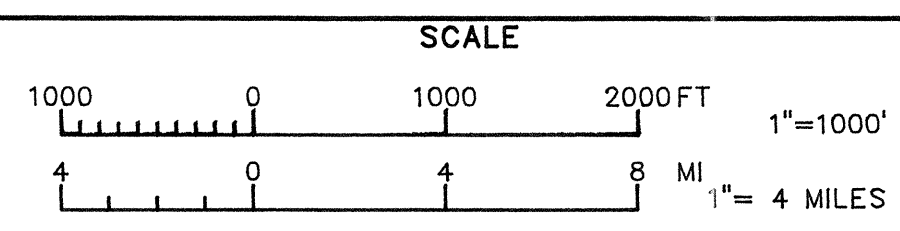


GREELEY AND HANSEN
ENGINEERS
1715 NORTH WESTSHORE BOULEVARD
TAMPA, FLORIDA 33607

DESIGNED TYW
DRAWN ROO
CHECKED NUH

APPROVED

NO.	DATE	APPD.	REVISION



TOWN OF LONGBOAT KEY, FLORIDA
HARBORSIDE DRIVE
SANITARY FORCE MAIN REPLACEMENT

LOCATION MAP, AREA MAP, INDEX,
LEGEND AND ABBREVIATIONS

PROJ. NO.	5231
DWG.	1
SHEET	OF 4
DATE	MAY 1995
REV.	0