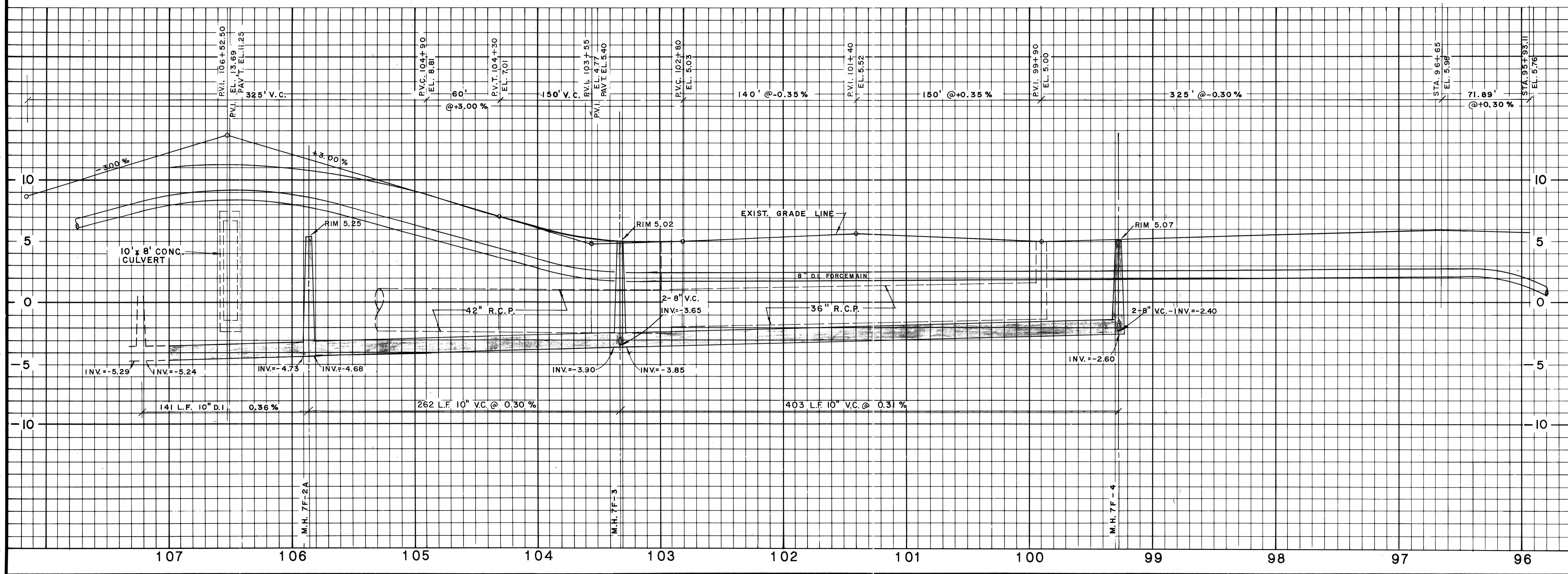


HARBOURSIDE DRIVE

NOTE: Sanitary Lateral Stations are from nearest down stream manhole (0 + 0.0)

- LEGEND**
- General Telephone
 - Storor Television
 - Fla. Power & Light Co.
 - Arvida Corporation



TOWN OF LONGBOAT KEY, FLORIDA		ARVIDA CORPORATION	ENGINEERS & SURVEYORS	4509 BEE RIDGE ROAD	SARASOTA, FLORIDA	PHONE 371-6362
RECORD DRAWING OF: HARBOURSIDE DRIVE						
BENNETT & BISHOP, INC.						
ENGINEERS & SURVEYORS						
T.L.K. FILE NO.						
REVISION	DATE	BY	SCALE:	DATE:	DESIGNED BY	PROJECT ENGINEER
1			HORIZ. 1"=40' VERT. 1"=4'			
2			DRAWN BY	DATE:	CHECKED BY	PROJECT NO.
3			J.M. REESE	FEB. 1985	J.M. REESE	191-32
SHEET NUMBER		191-663 AB				