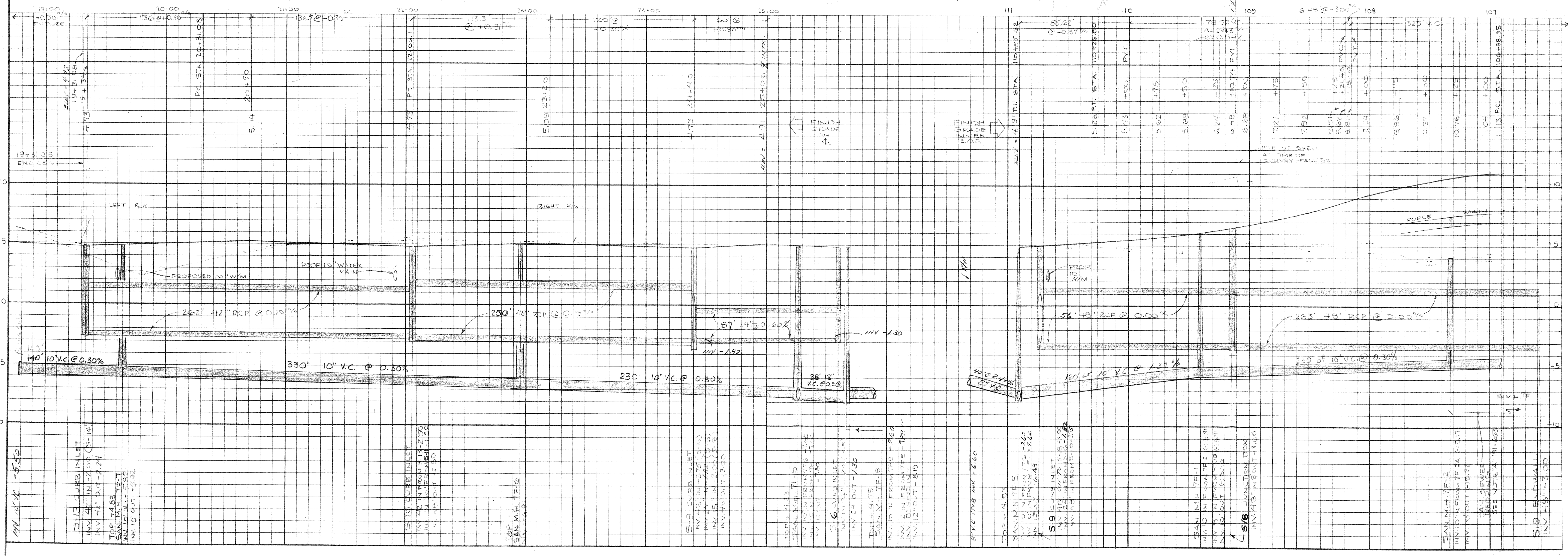
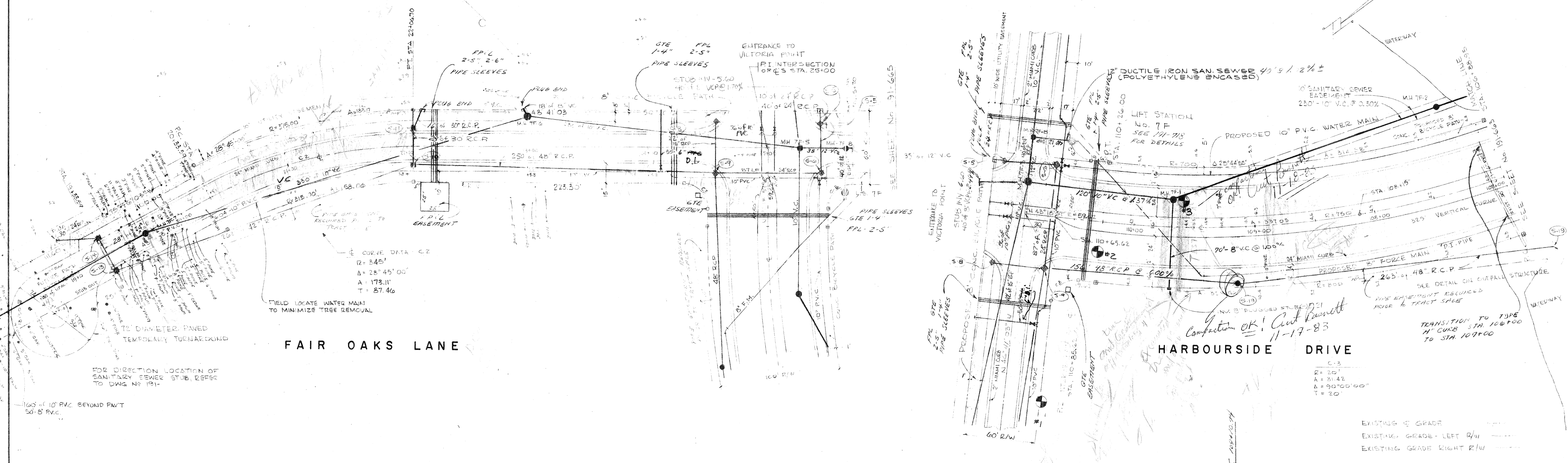


- NOTES
1. PIPE SLEEVES - INSTALL IN LOCATIONS INDICATED MIN 1" SEPARATION MIN 36" COVER
  2. TEST PIT REQUIRED. SEE NOTE 2 (DWG. 191-665)



**ARVIDA CORPORATION**  
**HARBOURSIDE DRIVE and FAIR OAKS LANE**  
**PLAN and PROFILE**

**BENNETT & BISHOP**  
 CONSULTING ENGINEERS & SURVEYORS  
 SARASOTA FLORIDA

DATE	SCALE	DESIGN	DRAWN	CHECK	APPROVED
11-17-83	1" = 40'	W. J. BISHOP	J. M. BISHOP	J. M. BISHOP	J. M. BISHOP

DWG. NO. 191-664  
 191-664