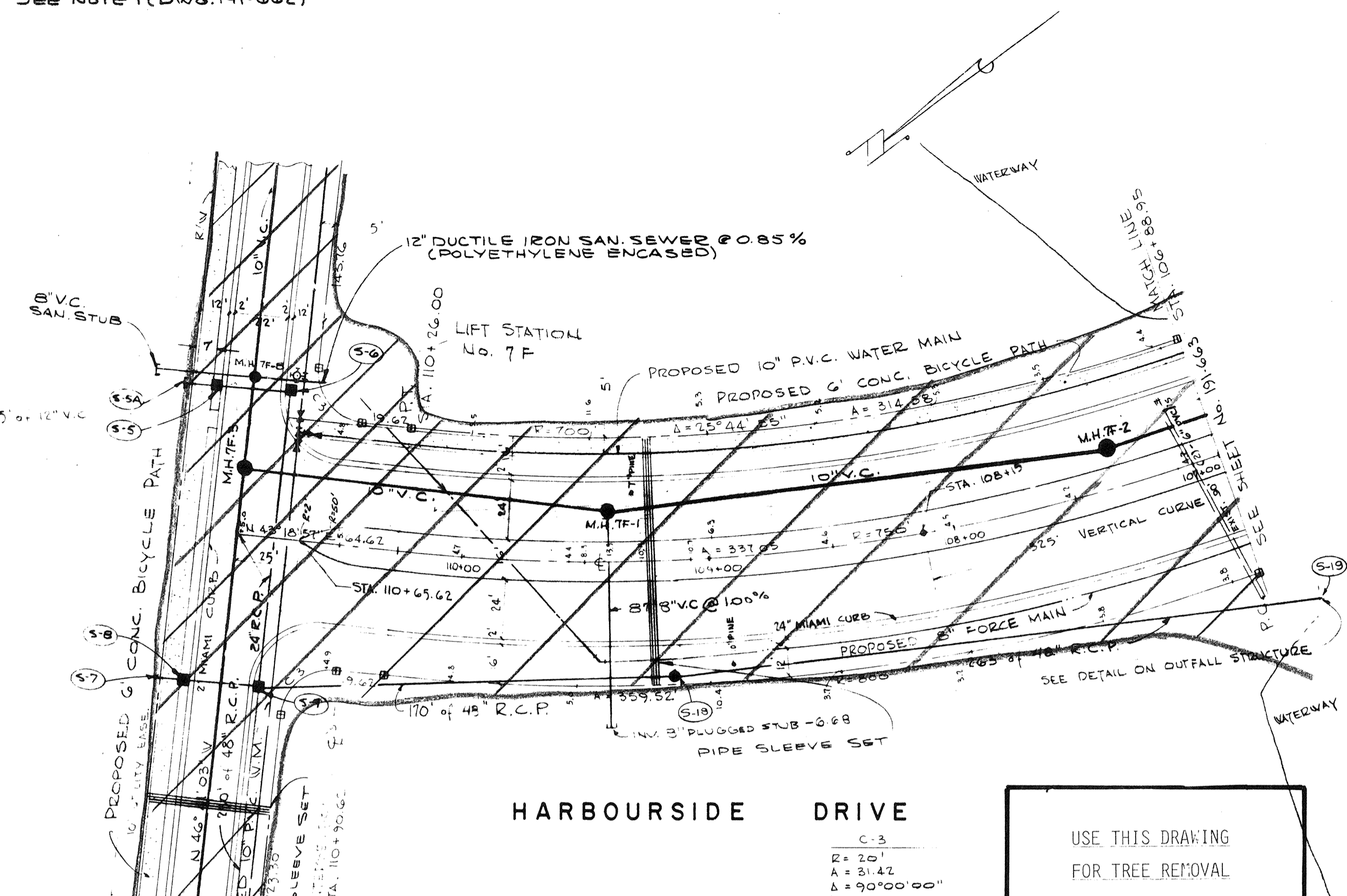
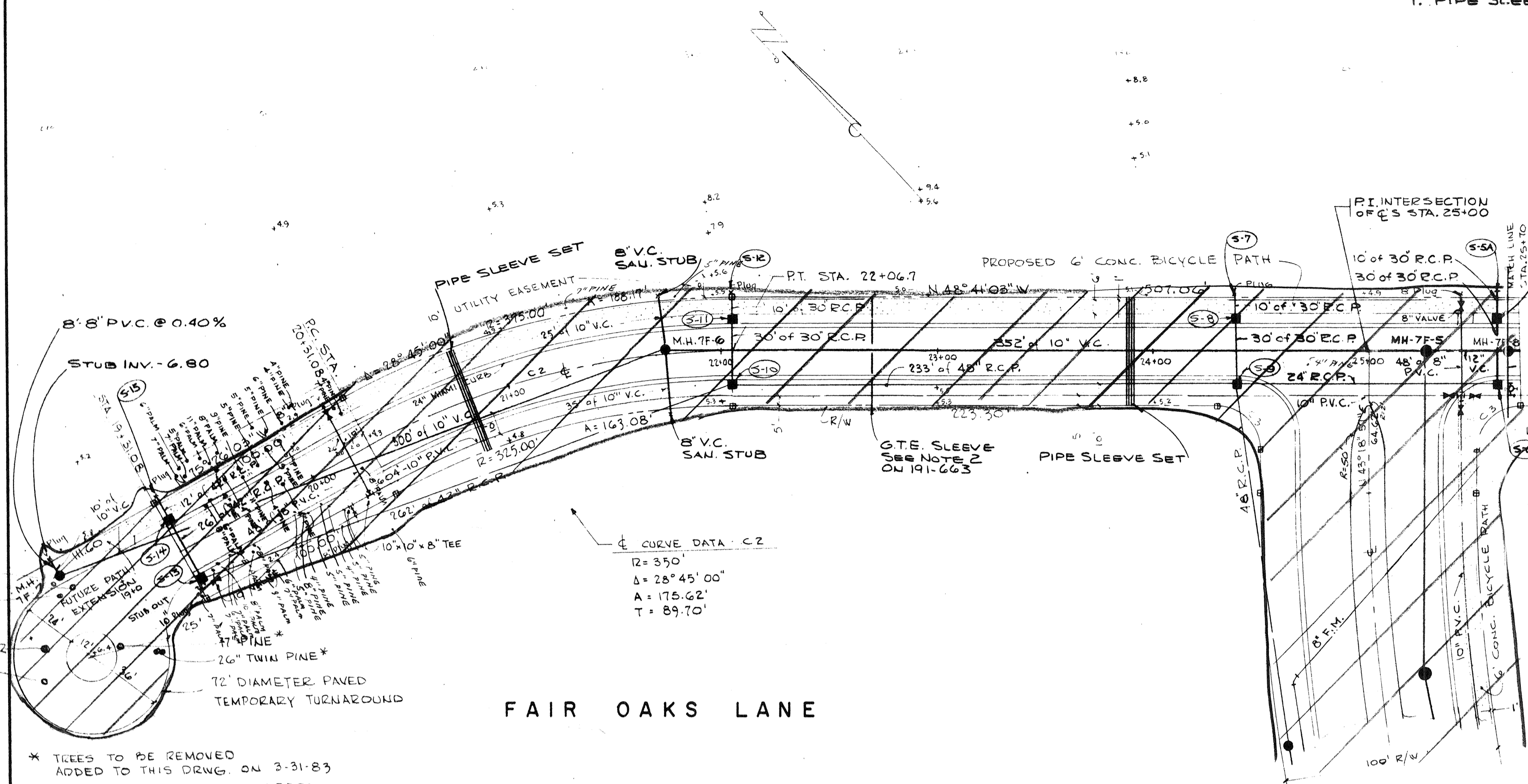
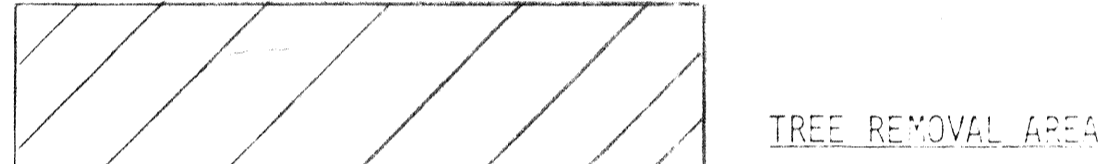


NOTES
 1. PIPE SLEEVE SET - SEE NOTE 1 (Dwg. 191-662)

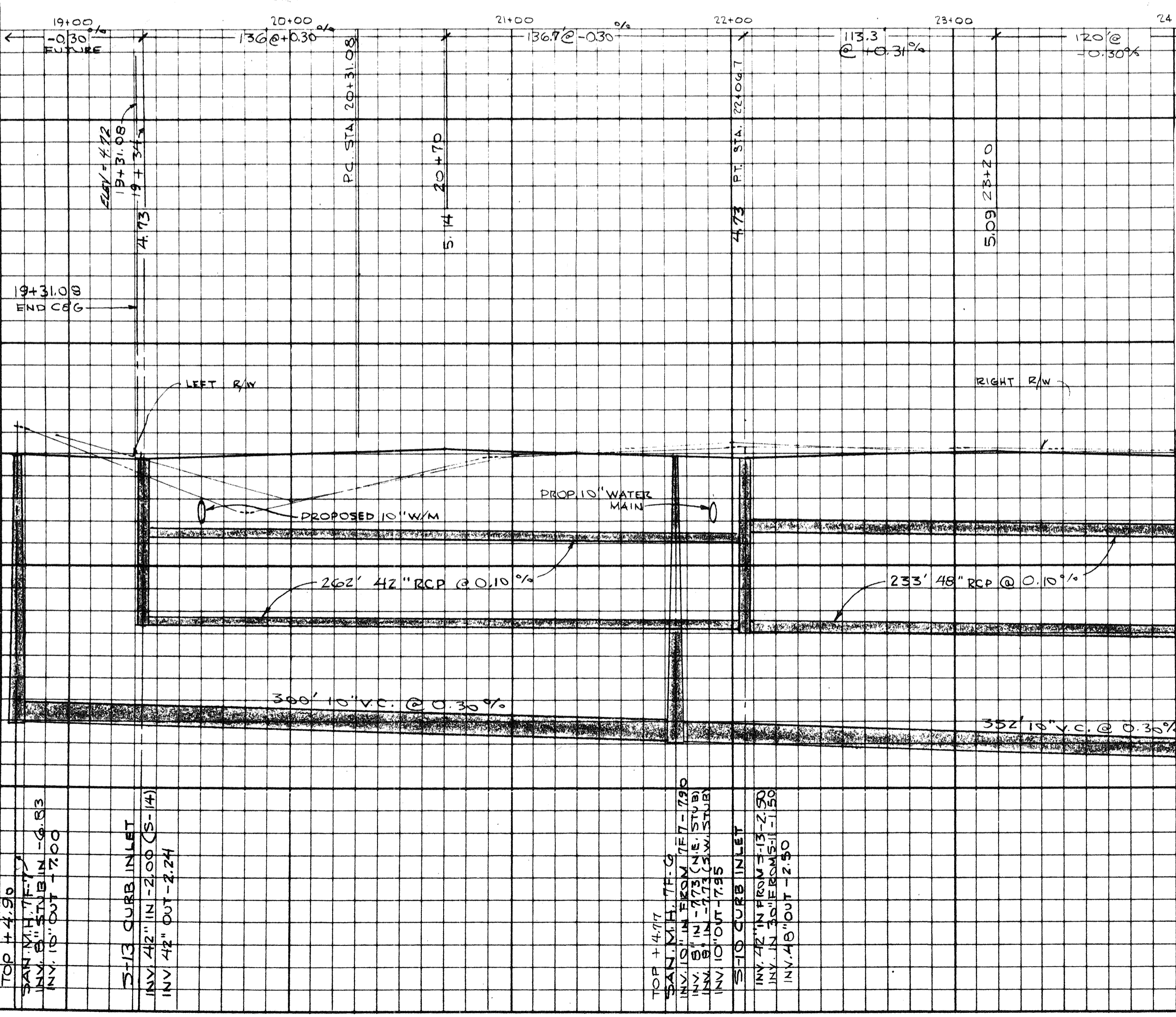


* TREES TO BE REMOVED
 ADDED TO THIS DRWG. ON 3-31-83
 TABULATION OF ADDED TREES
 5 OAKS
 3 PINE

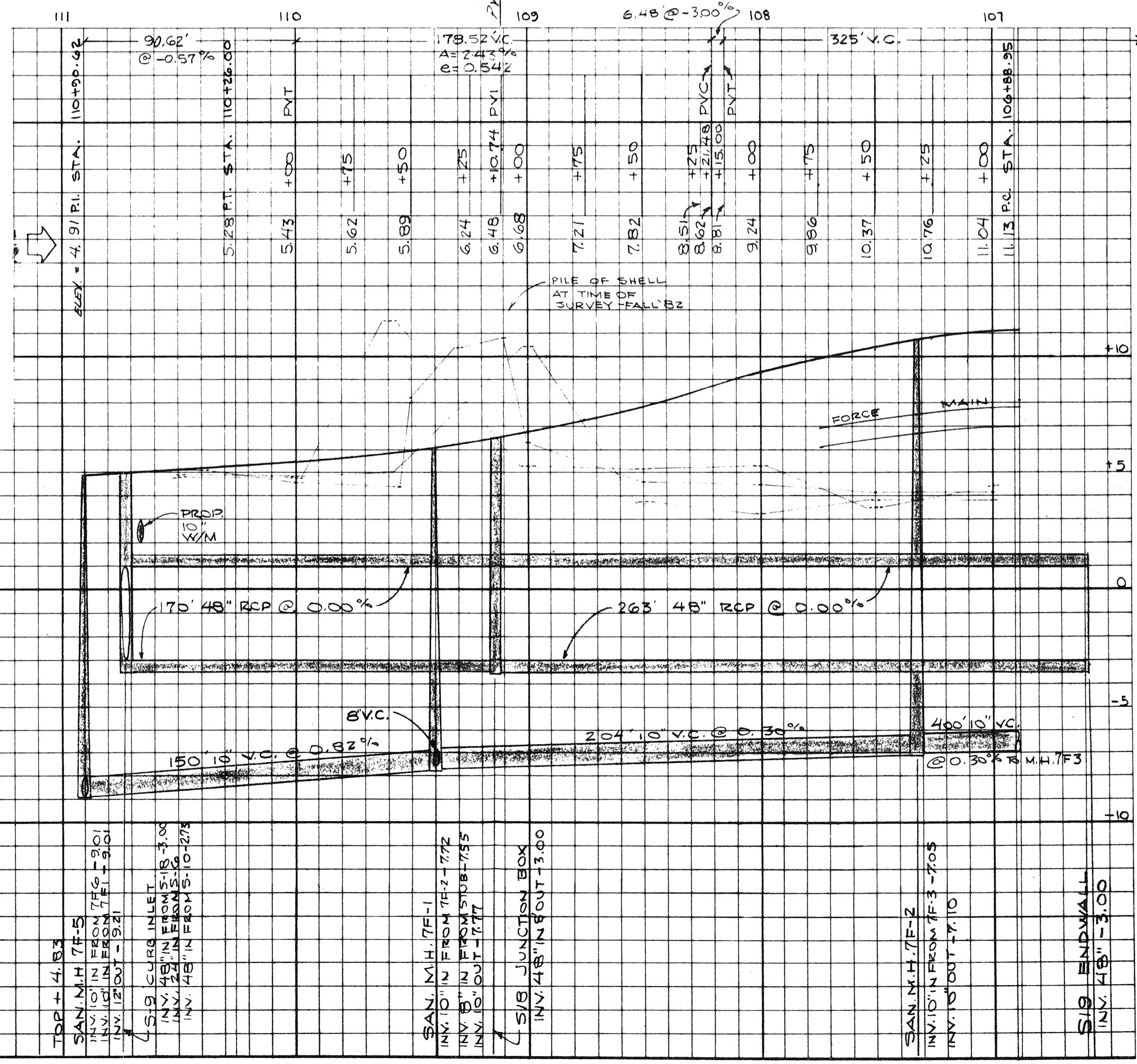
USE THIS DRAWING
 FOR TREE REMOVAL
 ONLY



NOTE: TREE REMOVAL PERMIT REQUIRED PRIOR TO ANY CLEARING.



TREES TO BE TRANSPLANTED		AMENDMENT 3-31-83	
Species	No.		
Palm	3	>	11
TREES TO BE REMOVED			
Species	No.		
Pine	11	>	10
Oak	0	>	10
Cedar	0		
Fig	0		
TREES WITHIN SAVE AREA			
Species	No.		
Oak	0		
Palm	0		
Pine	0		
Fig	0		



BENNETT & BISHOP
 CONSULTING ENGINEERS & SURVEYORS
 FLORIDA
 SARASOTA

ARVIDA CORPORATION
 HARBOURSIDE DRIVE and FAIR OAKS LANE
 TREE PRESERVATION AND RELOCATION DRAWING

DATE: 4/28/83 SCALE: HORIZ. 1"=40' VERT. 1"=4' DESIGN: M.K. DRAWN: G.H. R.K. CHECK: APPROVED: 3-31-83 ADDED TREES AT TURN ARROUND 4/28/83 BY: [Signature]

DWG. No. 191-730