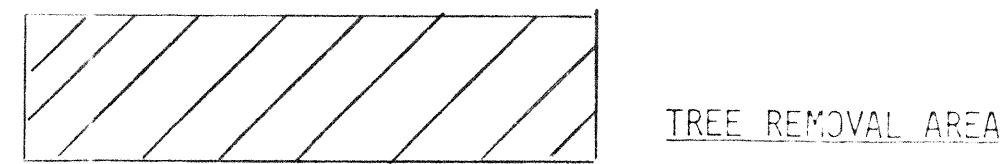
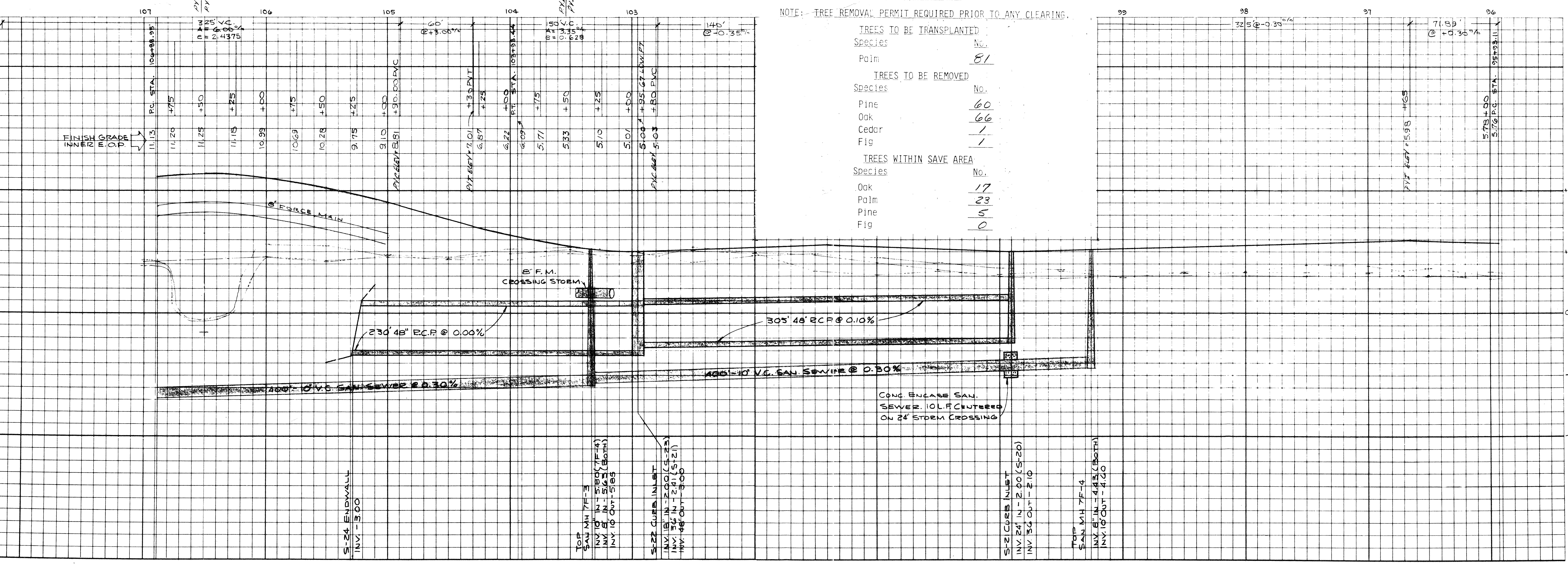
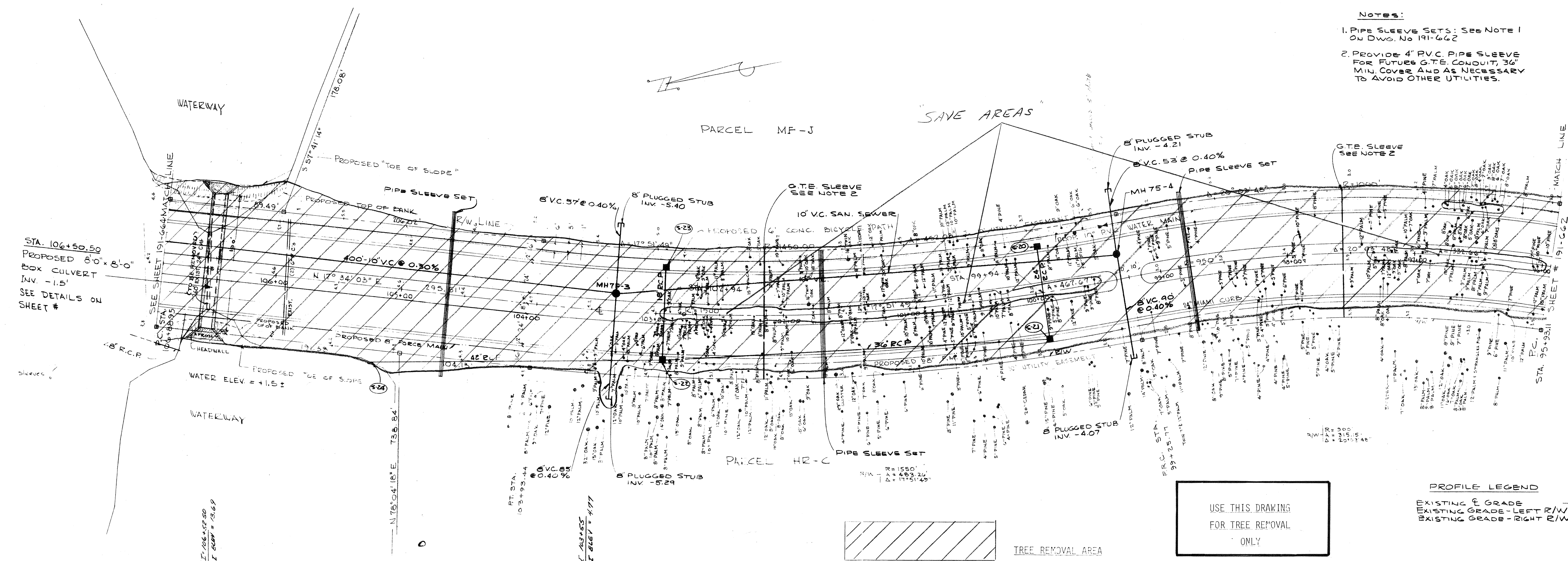


- NOTES:
1. PIPE SLEEVE SETS: SEE NOTE 1 ON DWG. No 191-662
 2. PROVIDE 4" PVC PIPE SLEEVE FOR FUTURE G.T.E. CONDUIT, 30" MIN. COVER AND AS NECESSARY TO AVOID OTHER UTILITIES.



USE THIS DRAWING FOR TREE REMOVAL ONLY

PROFILE LEGEND
 --- EXISTING F. GRADE
 --- EXISTING GRADE - LEFT R/W
 --- EXISTING GRADE - RIGHT R/W

NOTE: TREE REMOVAL PERMIT REQUIRED PRIOR TO ANY CLEARING.

TREES TO BE TRANSPLANTED	
Species	No.
Palm	81
TREES TO BE REMOVED	
Species	No.
Pine	60
Oak	66
Cedar	1
Fig	1
TREES WITHIN SAVE AREA	
Species	No.
Oak	17
Palm	23
Pine	5
Fig	0

BENNETT & BISHOP
 CONSULTING ENGINEERS & SURVEYORS
 SARASOTA, FLORIDA

ARVIDA CORPORATION
 HARBOURSIDE DRIVE
 TREE PRESERVATION AND RELOCATION DRAWING

DATE: 1-31-83
 SCALE: AS SHOWN
 DRAWN: J.M.K.
 CHECK: J.M.K.
 APPROVED: [Signature]

DWRG. No. 191-729