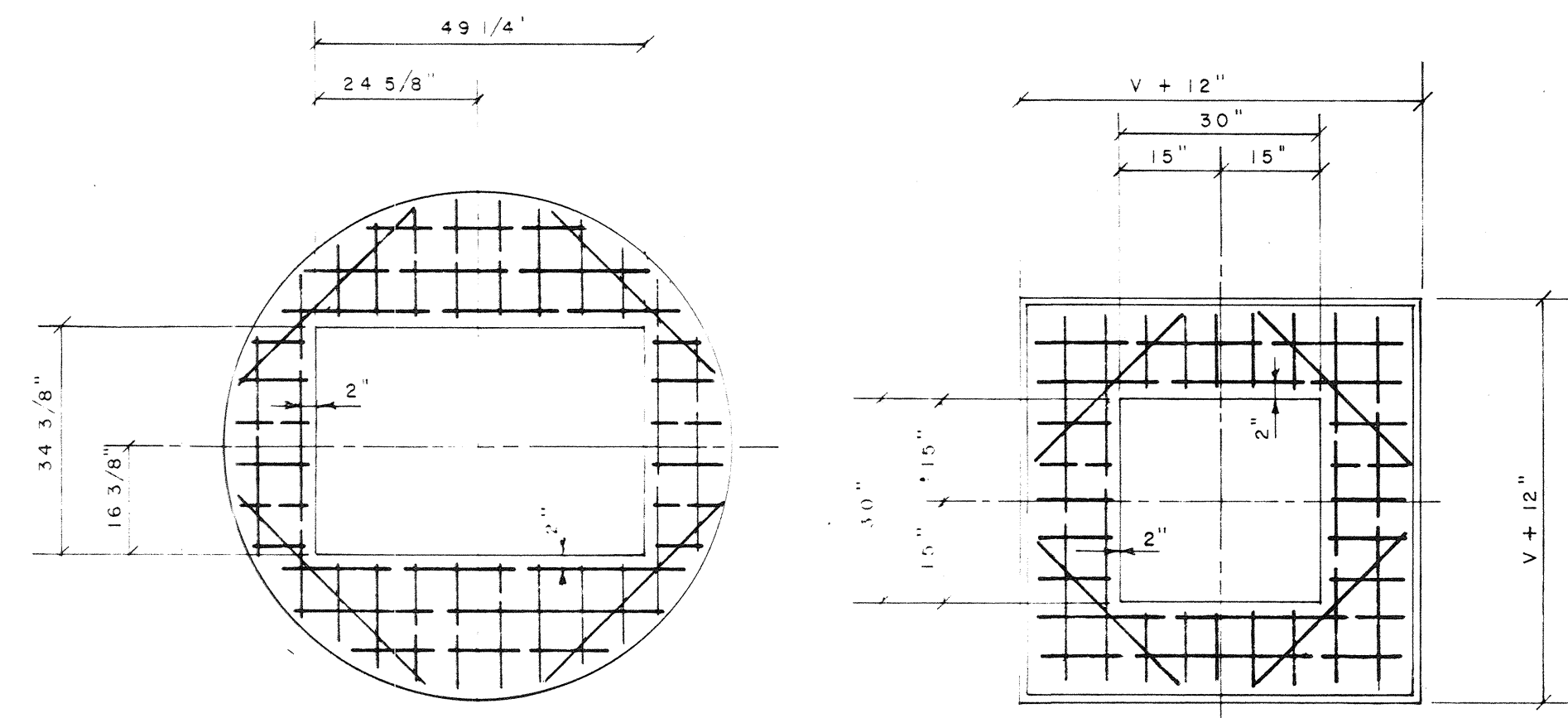
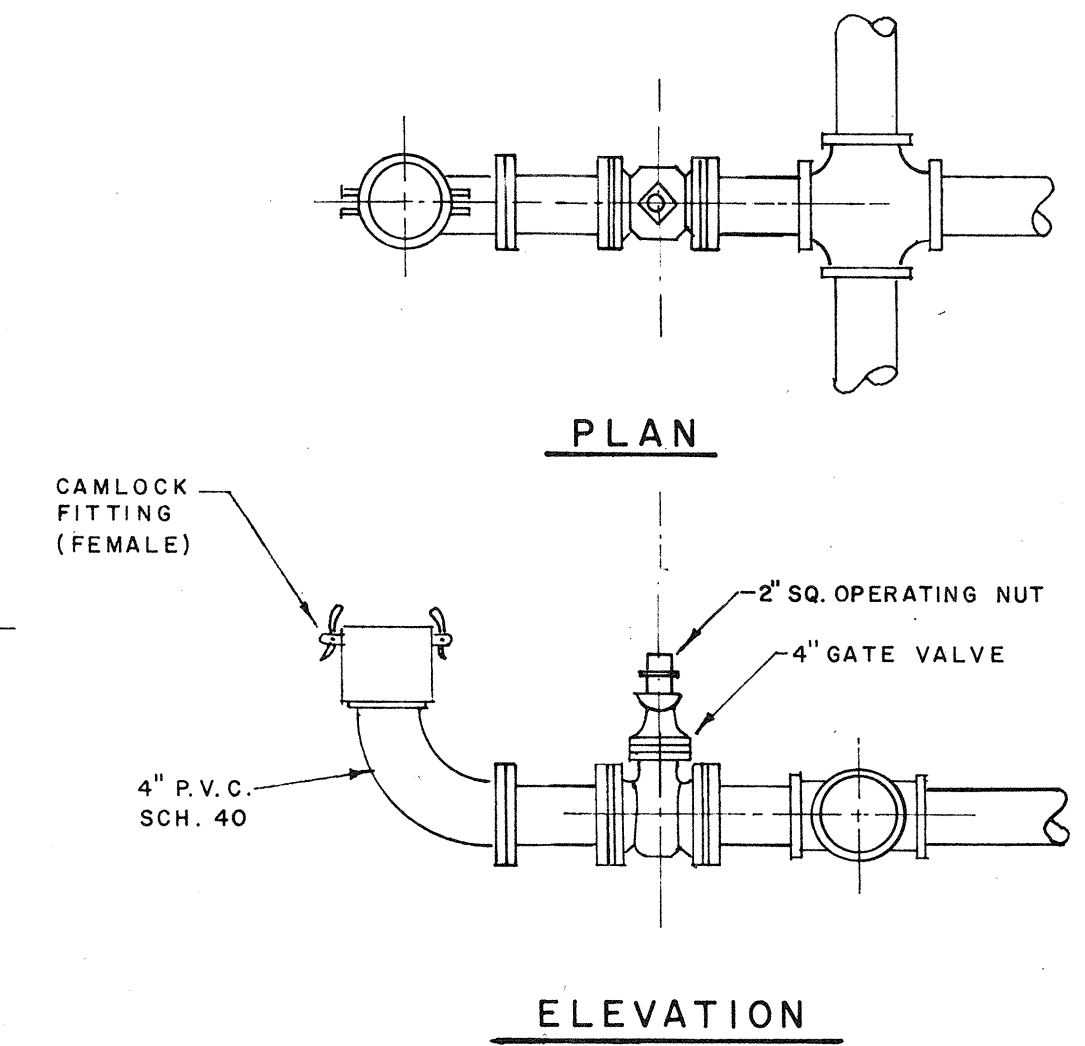


**AUXILIARY PLAN
LEFT OR RIGHT
DISCHARGE**

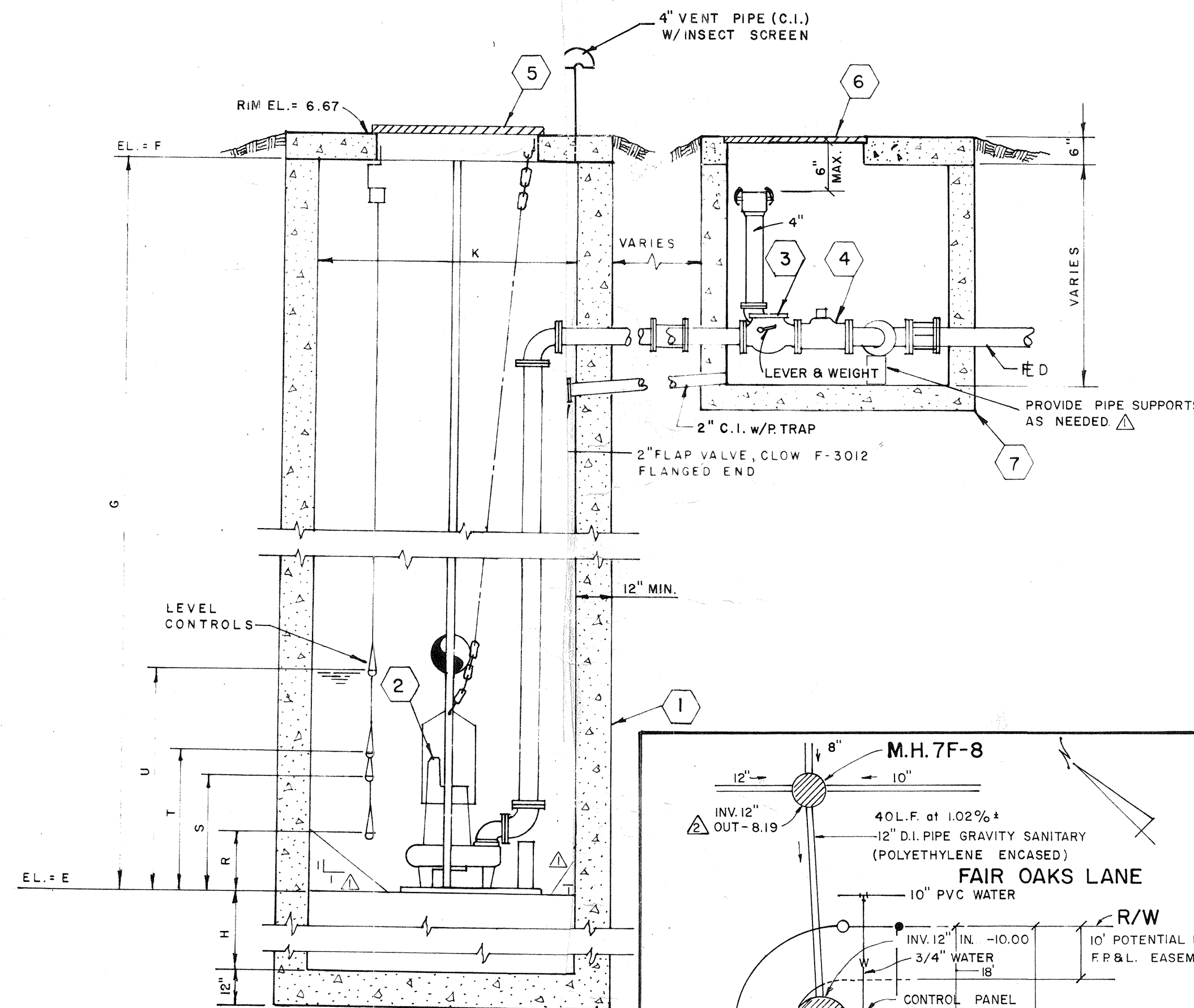


STEEL PLACEMENT IN COVERS

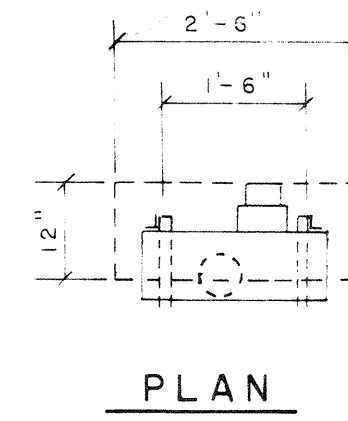


AUXILIARY PUMP DETAIL

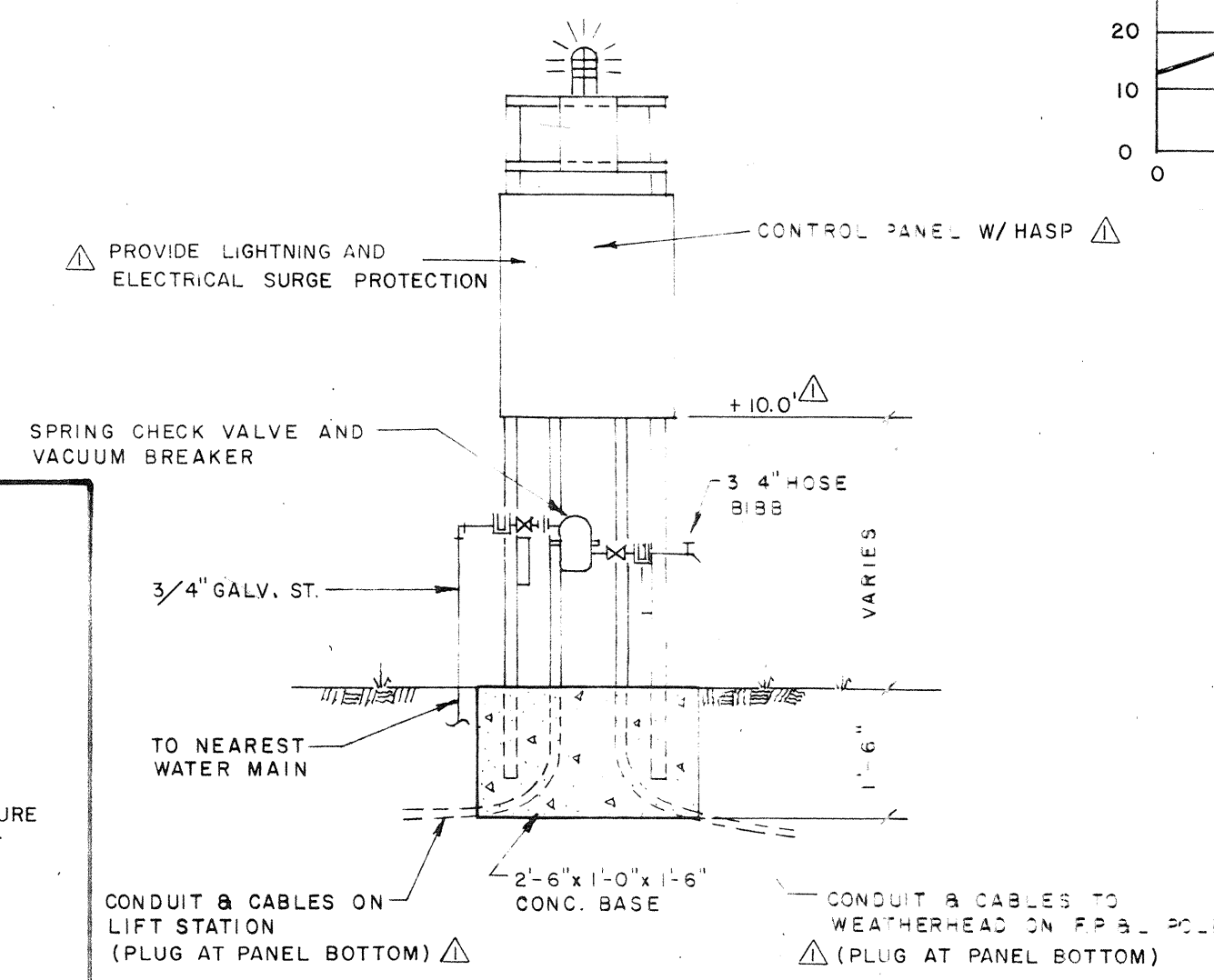
NOTE LANDSCAPING TO BE COMPLETED BY OTHERS



SECTION "A-A"



PLAN

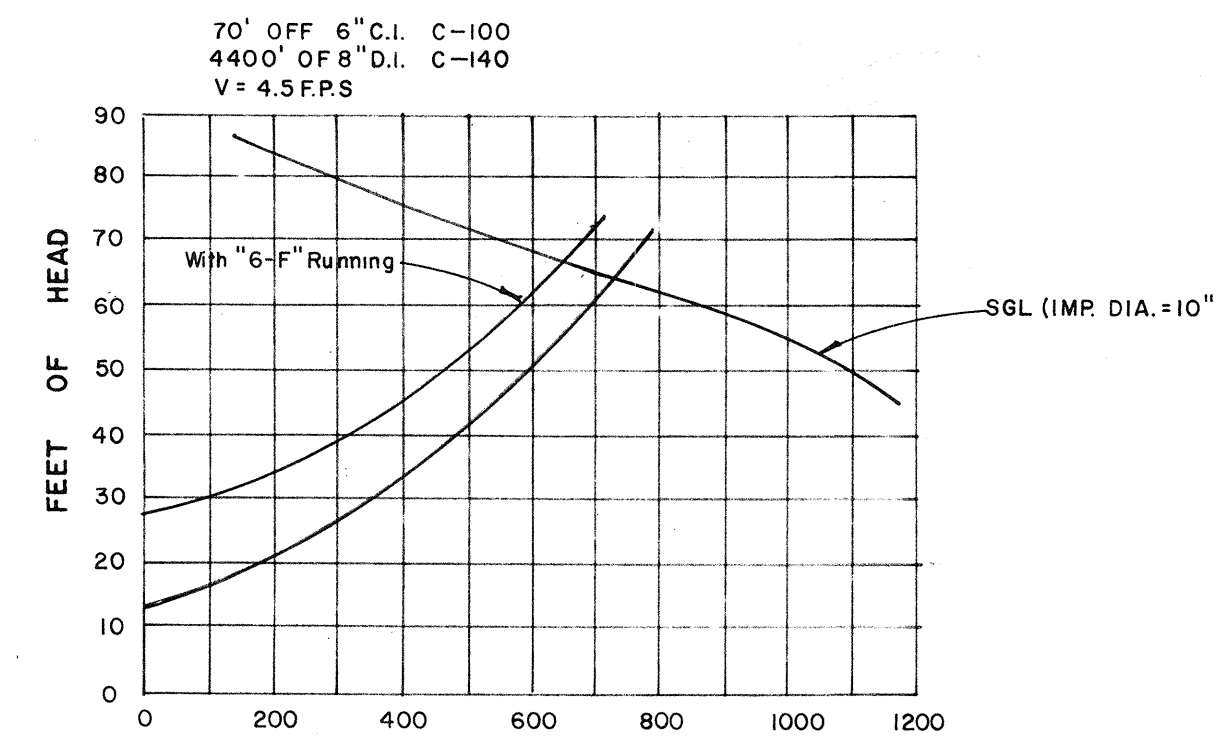


**ELEVATION
CONTROL PANEL**

NOTE: A SOIL BORING LOG IS AVAILABLE FROM THE ENGINEER FOR ONE TEST BORING IN THE GENERAL VICINITY OF THE LIFT STATION.

NOTES:

- ELECTRICAL SERVICE TO METER PAN BY OTHERS.
- SERVICE FROM METER PAN TO LIFT STATION (INCLUDING PANEL) BY CONTRACTOR.
- METER PAN SHALL BE LOCATED ON REAR OF CONTROL PANEL.
- ALL BARREL JOINTS SHALL BE MADE WATERTIGHT WITH AN APPROVED NEOPRENE GASKET AND GROUT.



SCHEDULE OF LIFT STATION DATA

L.S.—7-F

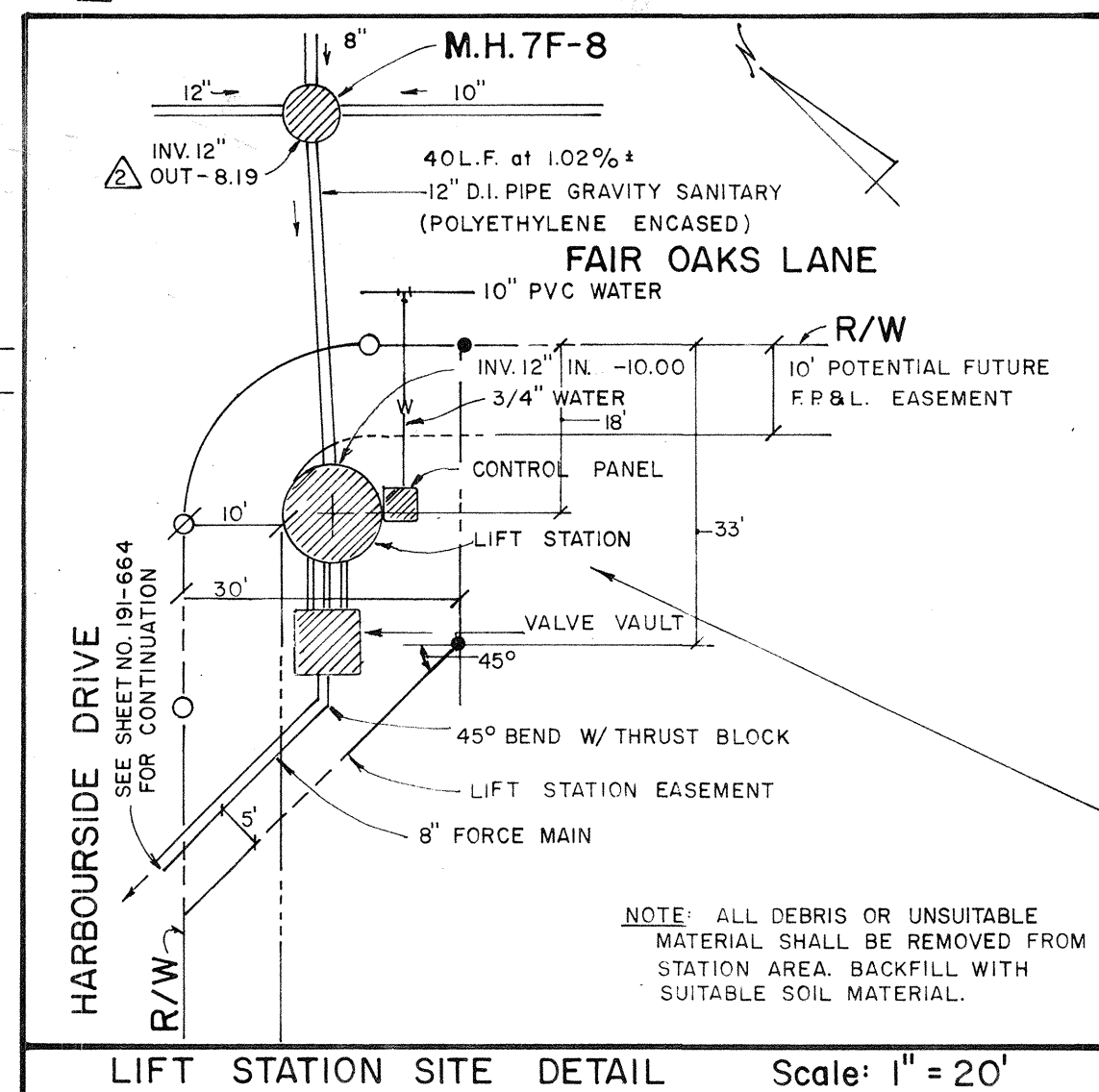
LIFT STATION No. 7-F

ITEM	DESCRIPTION
A.	TYPE HYDR-O-MATIC
B.	INF. PIPE SIZE 12"
C.	FL. LINE IN -8.59'
D.	FL. LINE OUT FM 2.0
E.	LS INV. -14.00
F.	GRADE ELEVATION 6.00
G.	DEPTH TO INV. 20.0'
H.	DEPTH OF BALLAST 2.0'
J.	CY BALLAST 5.8
K.	BARREL DIA. FT. 10.0'
L.	PUMP MODEL S6L
M.	H.P. 20
N.	R.P.M. 1750
P.	VOLT/PHASE 460/3
Q.	FM SIZE 8"
R.	OFF 1
S.	1 PUMP 3'-6"
T.	2 PUMPS 4'-0"
U.	H.W. ALARM 4'-6"
V.	VALVE VAULT 6'-0"
W.	DESIGN FLOW 688 G.P.M.

Note: CHECK VALVE ECCENTRIC PLUG VALVE

MATERIAL SCHEDULE (See Note Below)

- PRECAST CONCRETE WET WELL NOTE: SHOP DRAWINGS REQUIRED.
- PUMPS, HYDR-O-MATIC, SEE SCHEDULE.
- CHECK VALVE 6" UNLESS OTHERWISE NOTED.
- ECCENTRIC PLUG VALVE 6" UNLESS OTHERWISE NOTED.
- ACCESS HATCH COVER, 4'-0" x 2'-6" OPENING, HYDR-O-MATIC.
- ACCESS HATCH COVER, 2'-6" x 2'-6" OPENING, ALUMINUM WITH S.S. FASTENINGS.W/HASP
- PRECAST CONCRETE VALVE VAULT NOTE: SHOP DRAWINGS REQUIRED.
- AUXILIARY PUMP CONNECTION, SEE DETAIL.
- BRACKET FOR FLOAT WIRES, LIFTING RINGS, NUTS AND WASHERS TO BE STAINLESS STEEL.
- CONTROL PANEL TO HAVE TRANSFER SWITCH FOR EMERGENCY POWER.



LIFT STATION SITE DETAIL Scale: 1" = 20'