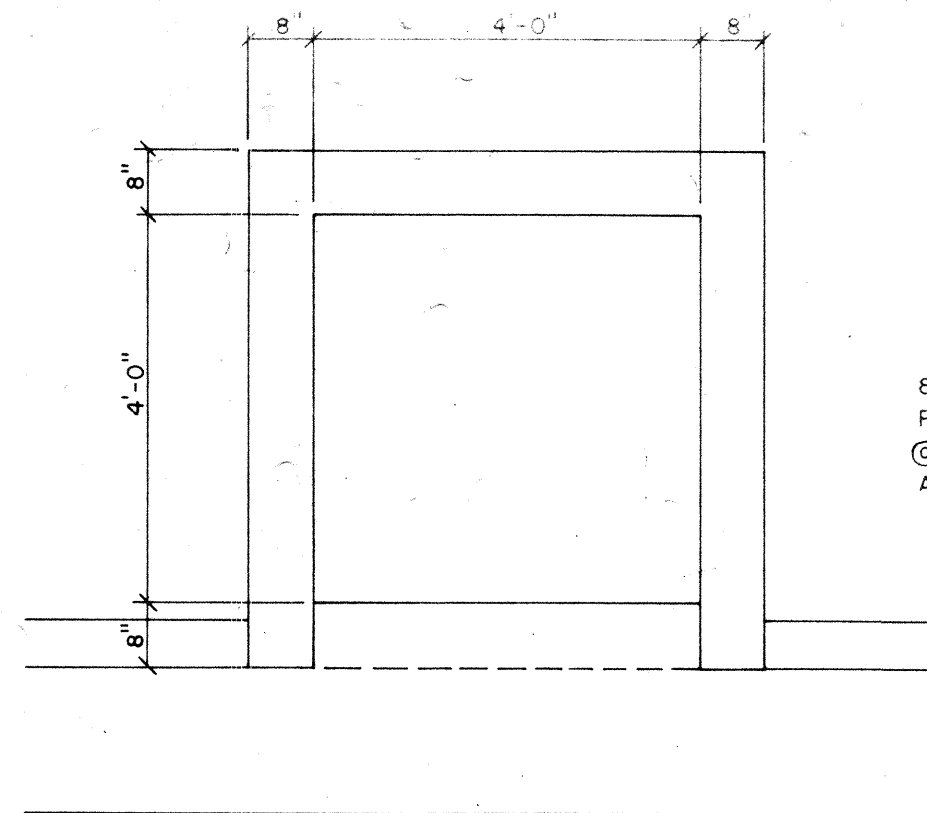
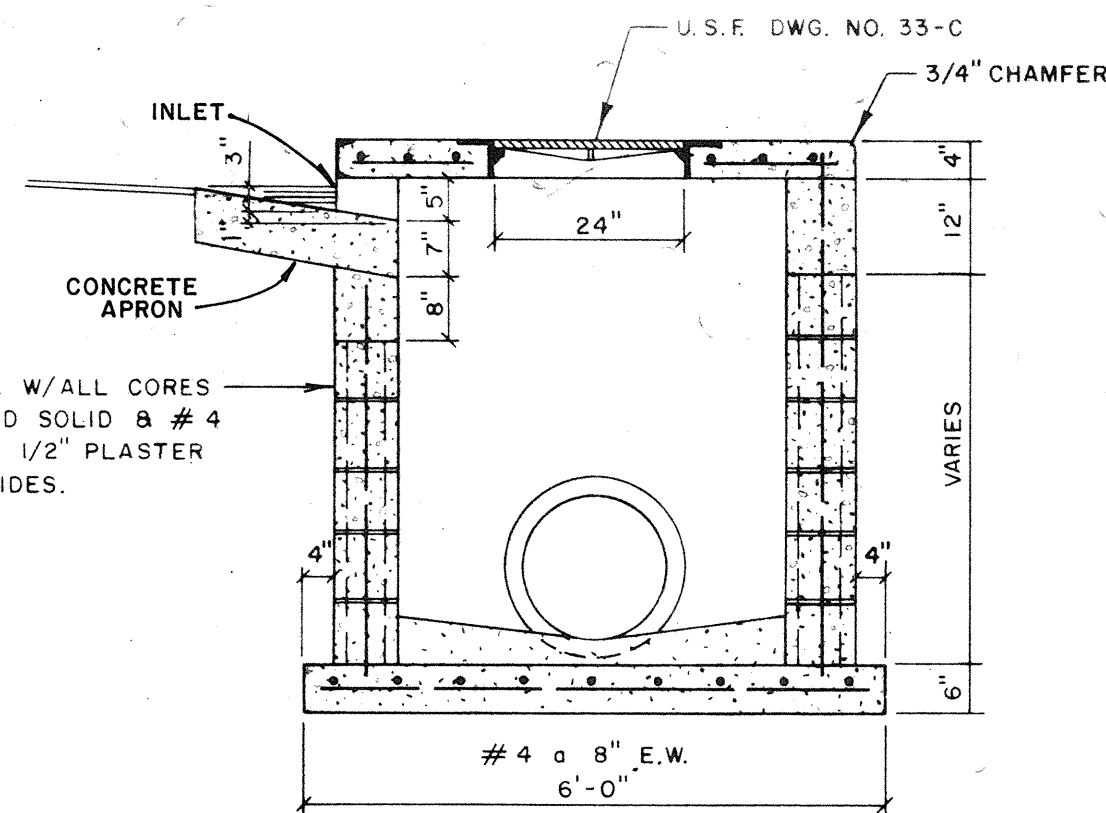


PLAN - COVER

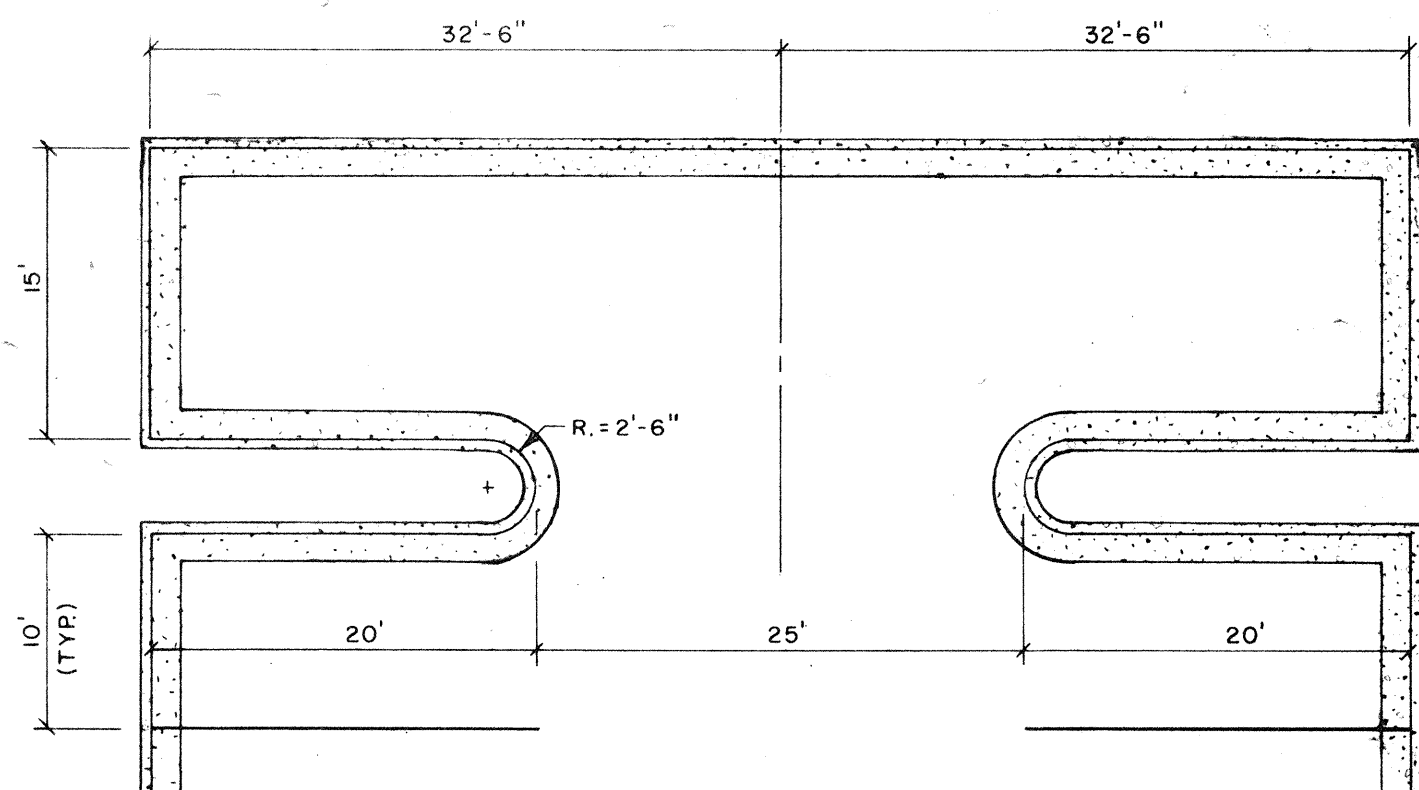


PLAN - COVER REMOVED
TYPICAL CURB INLET
SCALE: 1/2" = 1'-0"

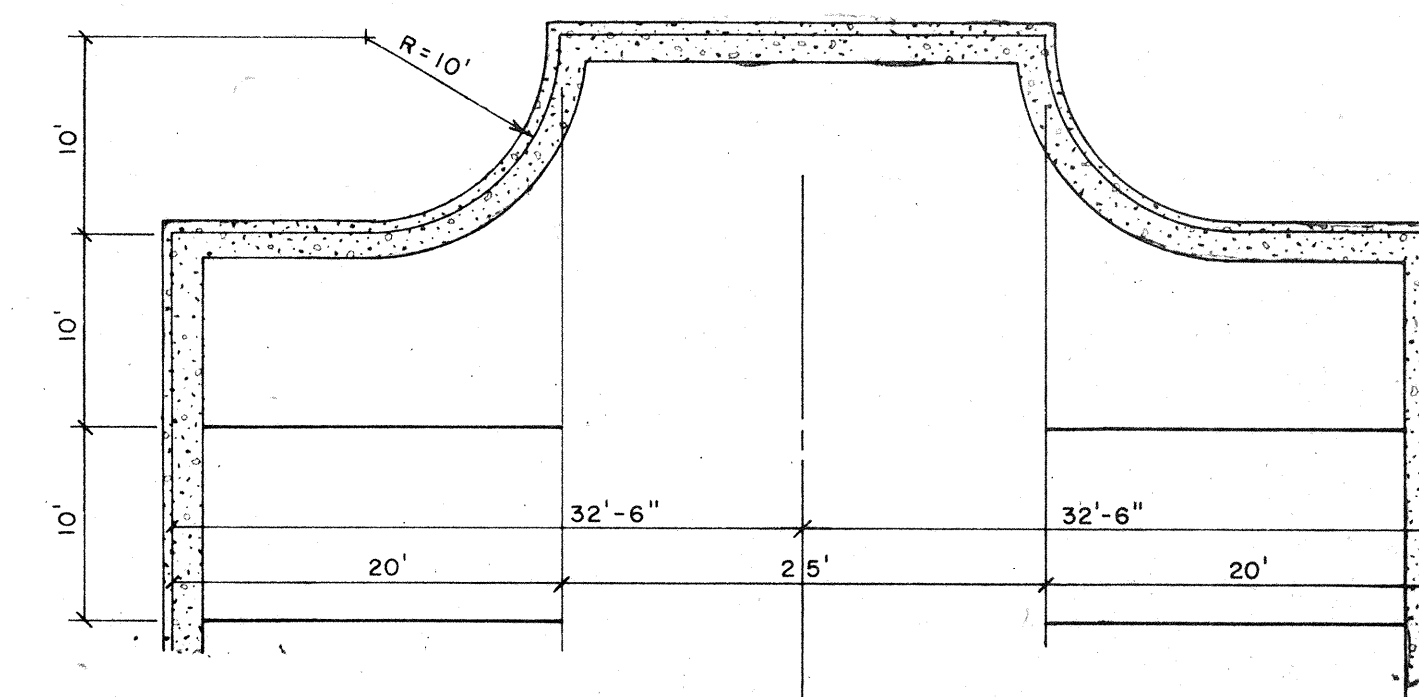


SECTION

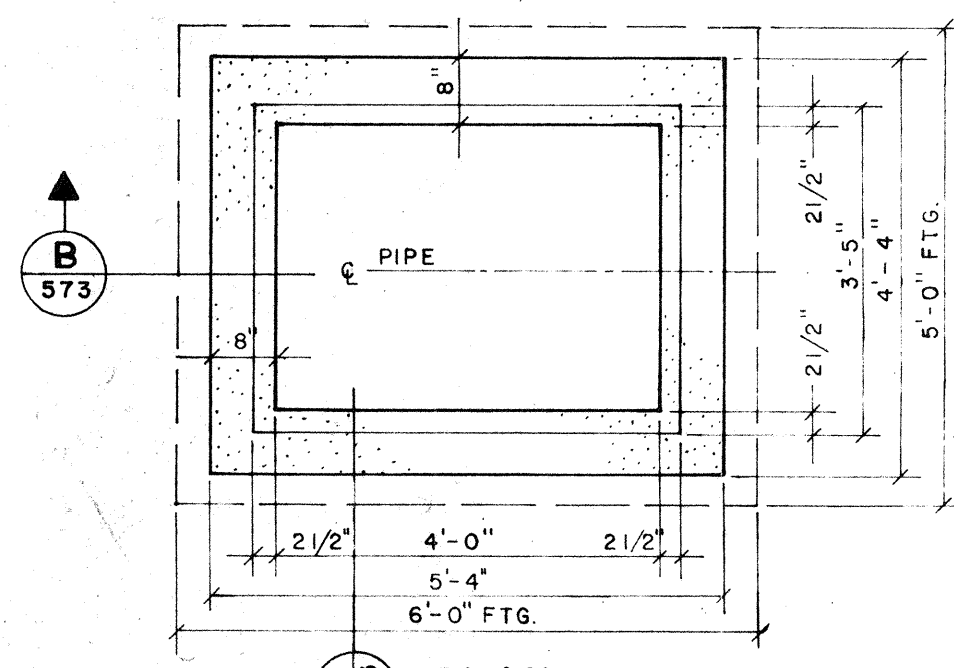
NOTE:
JUNCTION BOX S-19, S-20 & S-23
TYPE CURB INLET LESS CONC.
APRON & INLET.



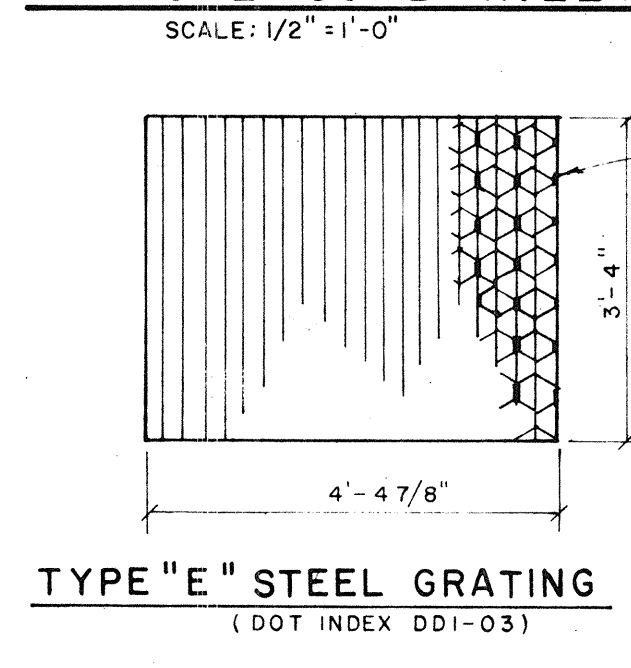
TURNAROUND DETAIL "A"



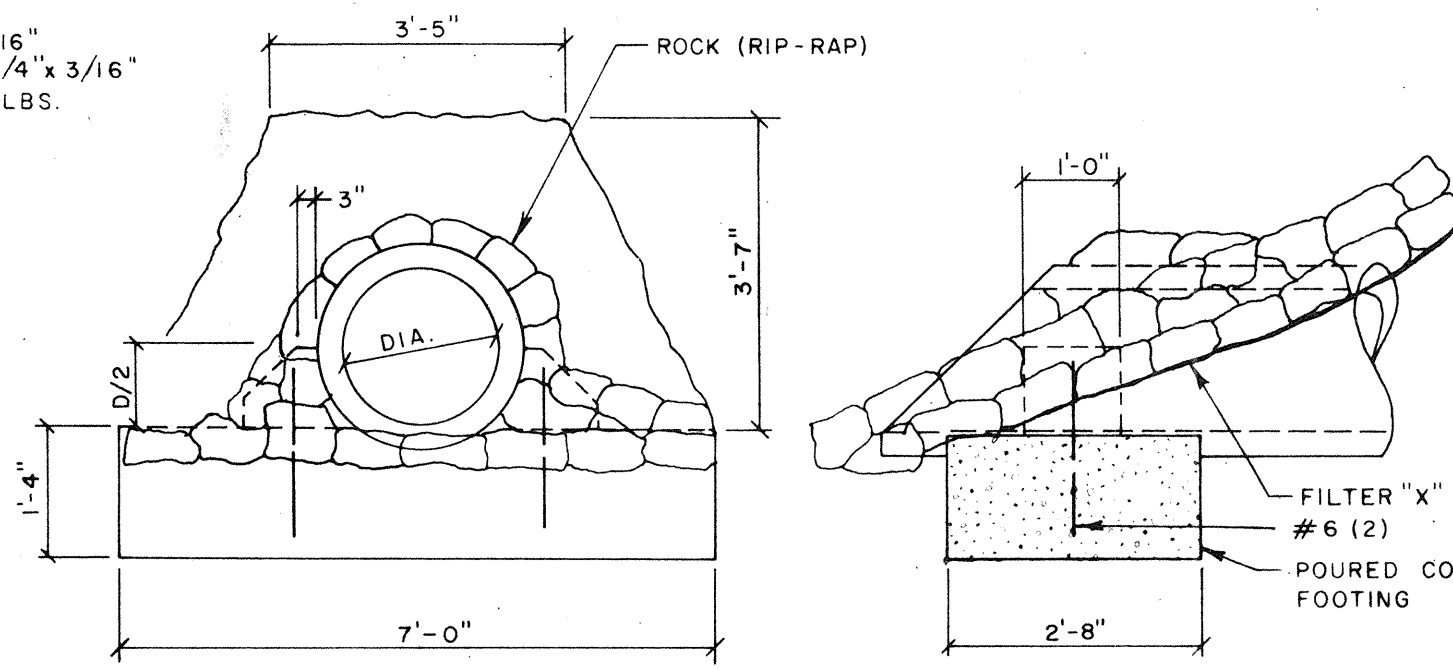
TURNAROUND DETAIL "B"



PLAN



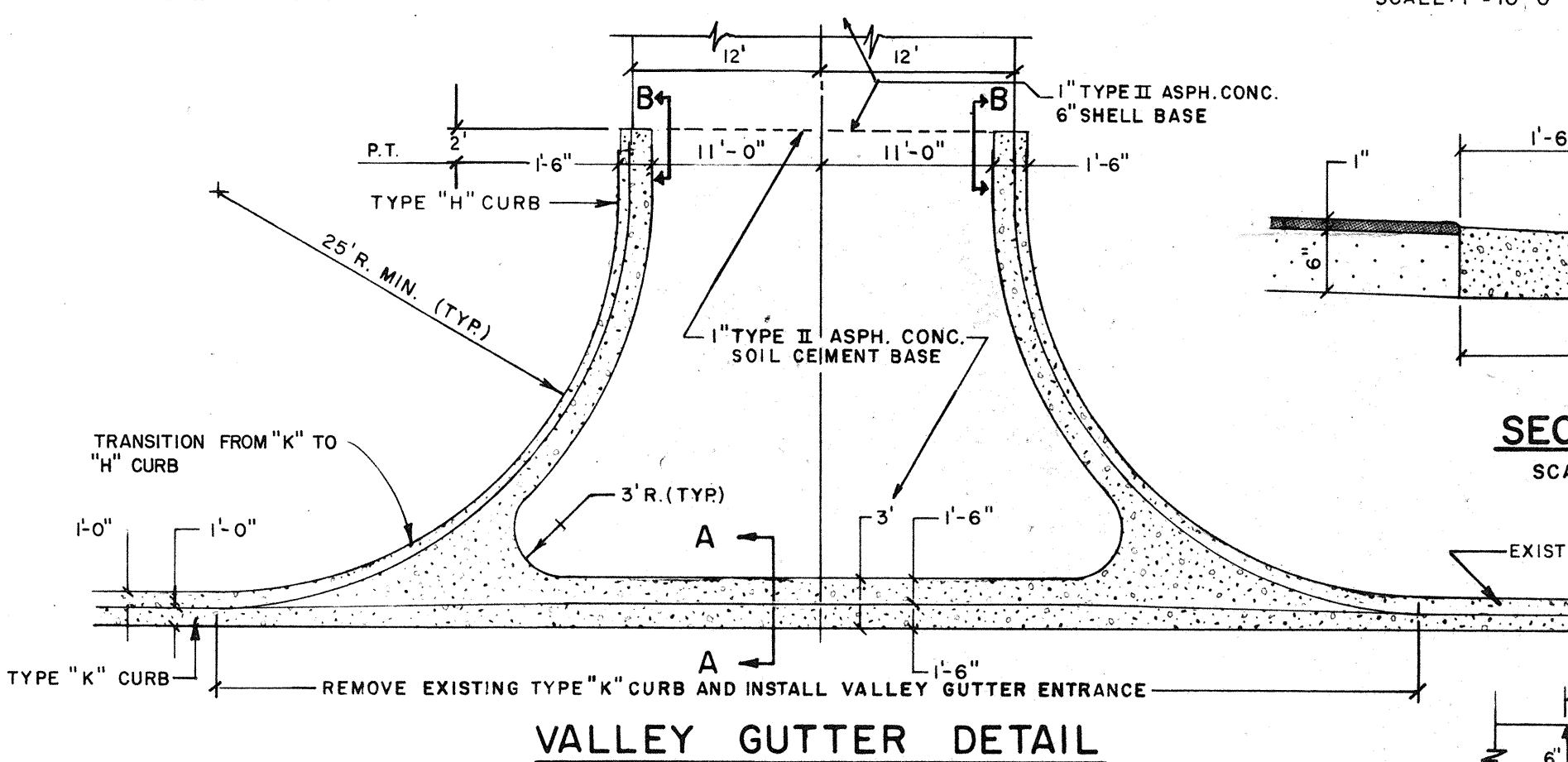
TYPE "E" STEEL GRATING
(DOT INDEX DD1-03)



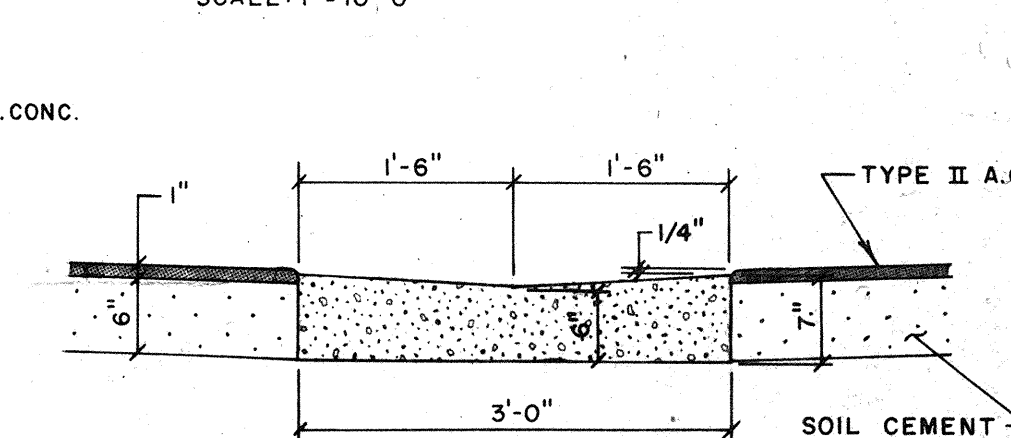
PLAN

SECTION

TYPICAL ENDWALL
SCALE: 1/2" = 1'-0"

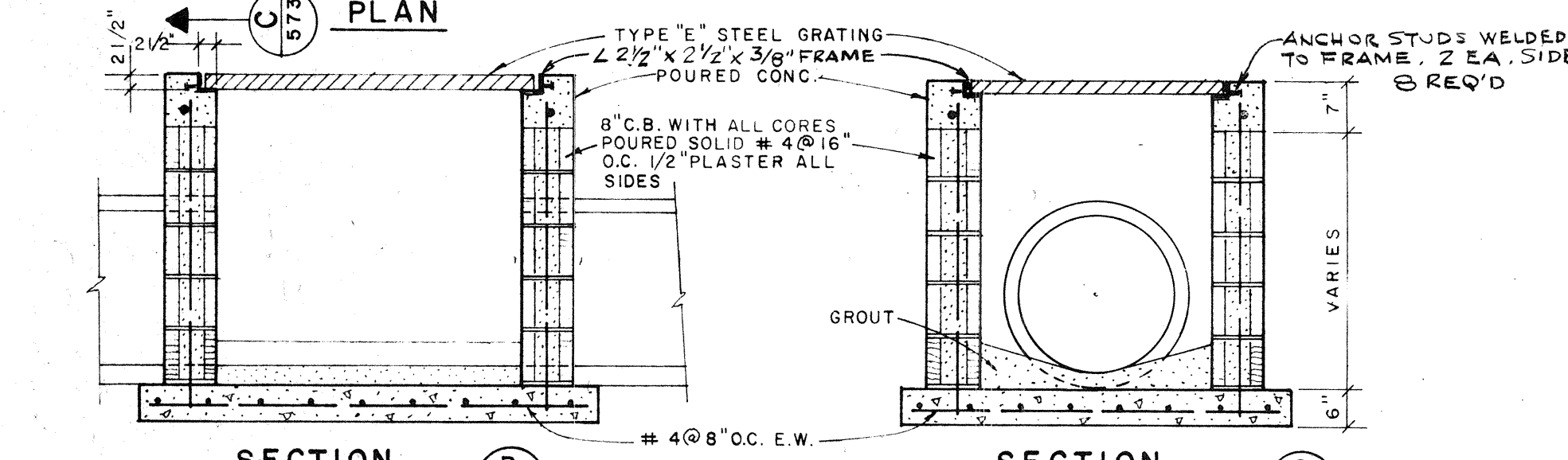


VALLEY GUTTER DETAIL
SCALE: 1" = 10'-0"



SECTION A-A

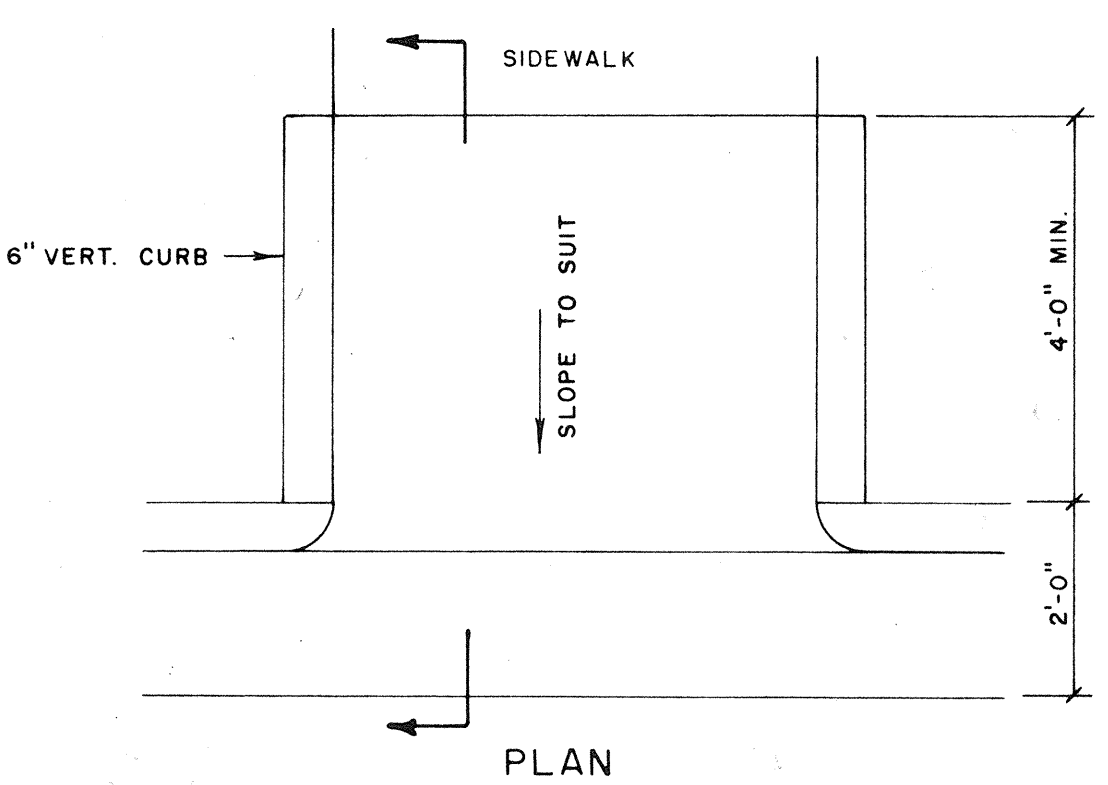
SCALE: 3/4" = 1'-0"



SECTION

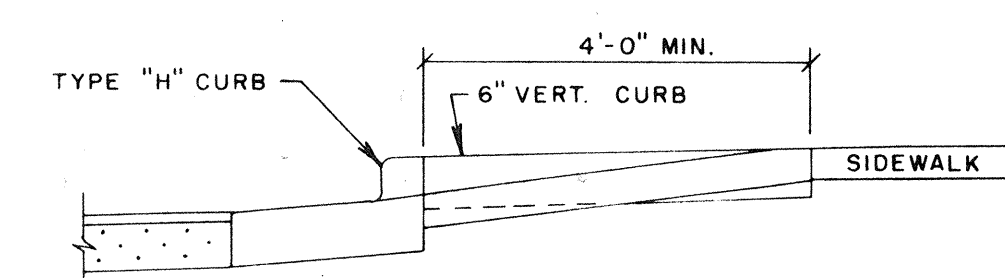
SECTION

TYPICAL DROP INLET
SCALE: 1/2" = 1'-0"

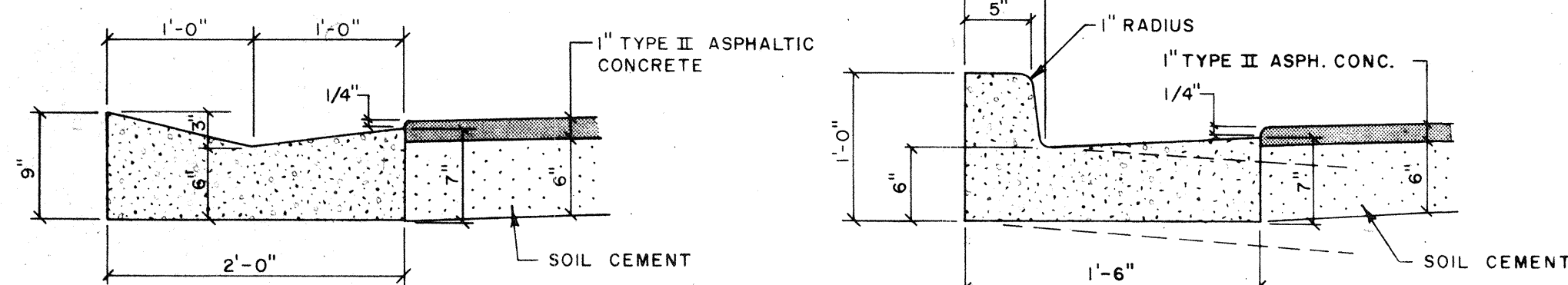


PLAN

BICYCLE RAMP DETAIL
SCALE: 1/2" = 1'-0"



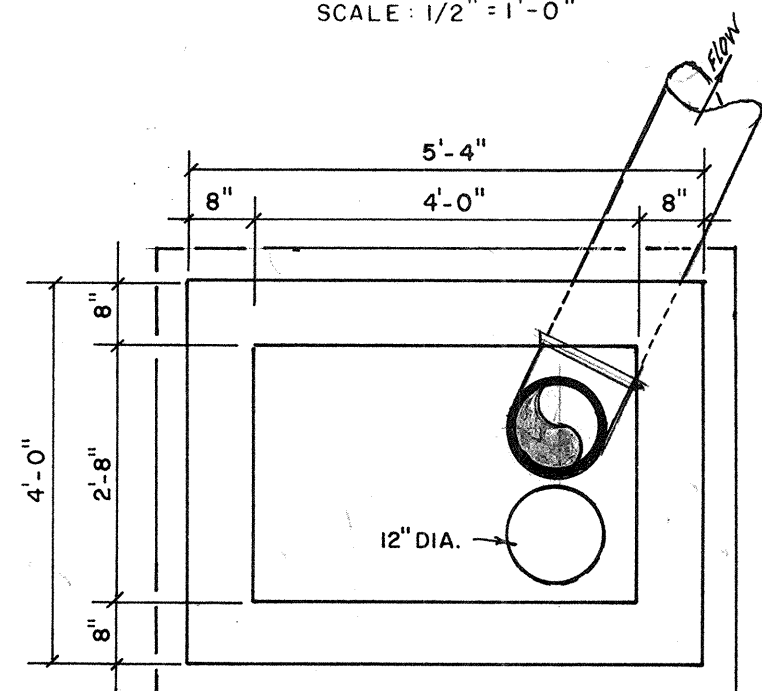
SECTION



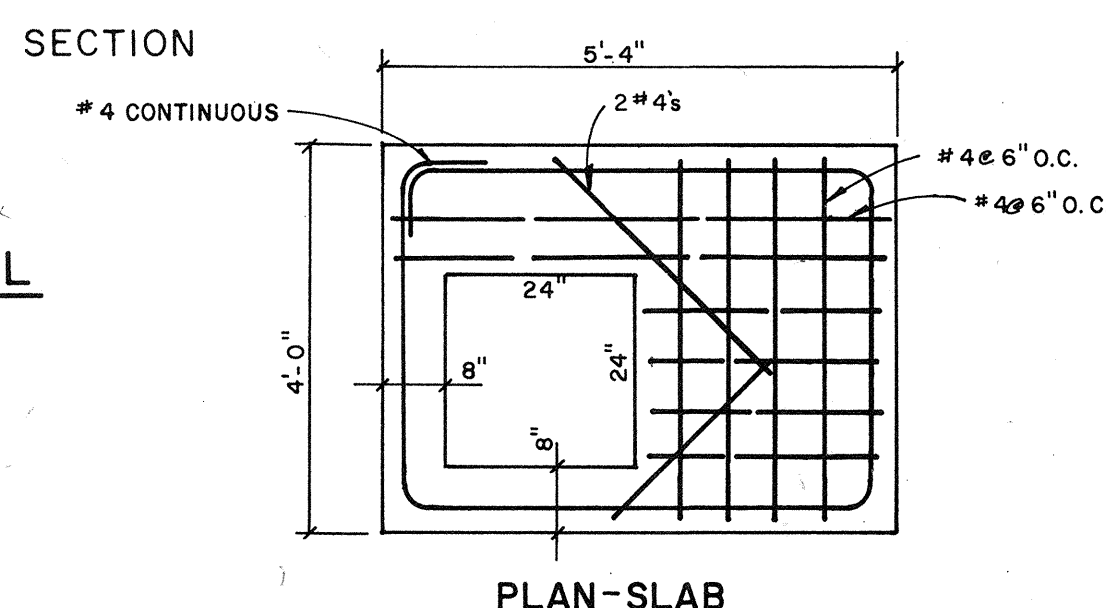
TYPE "K" CURB
SCALE: 1" = 1'-0"

TYPE "H" CURB
SCALE: 1" = 1'-0"

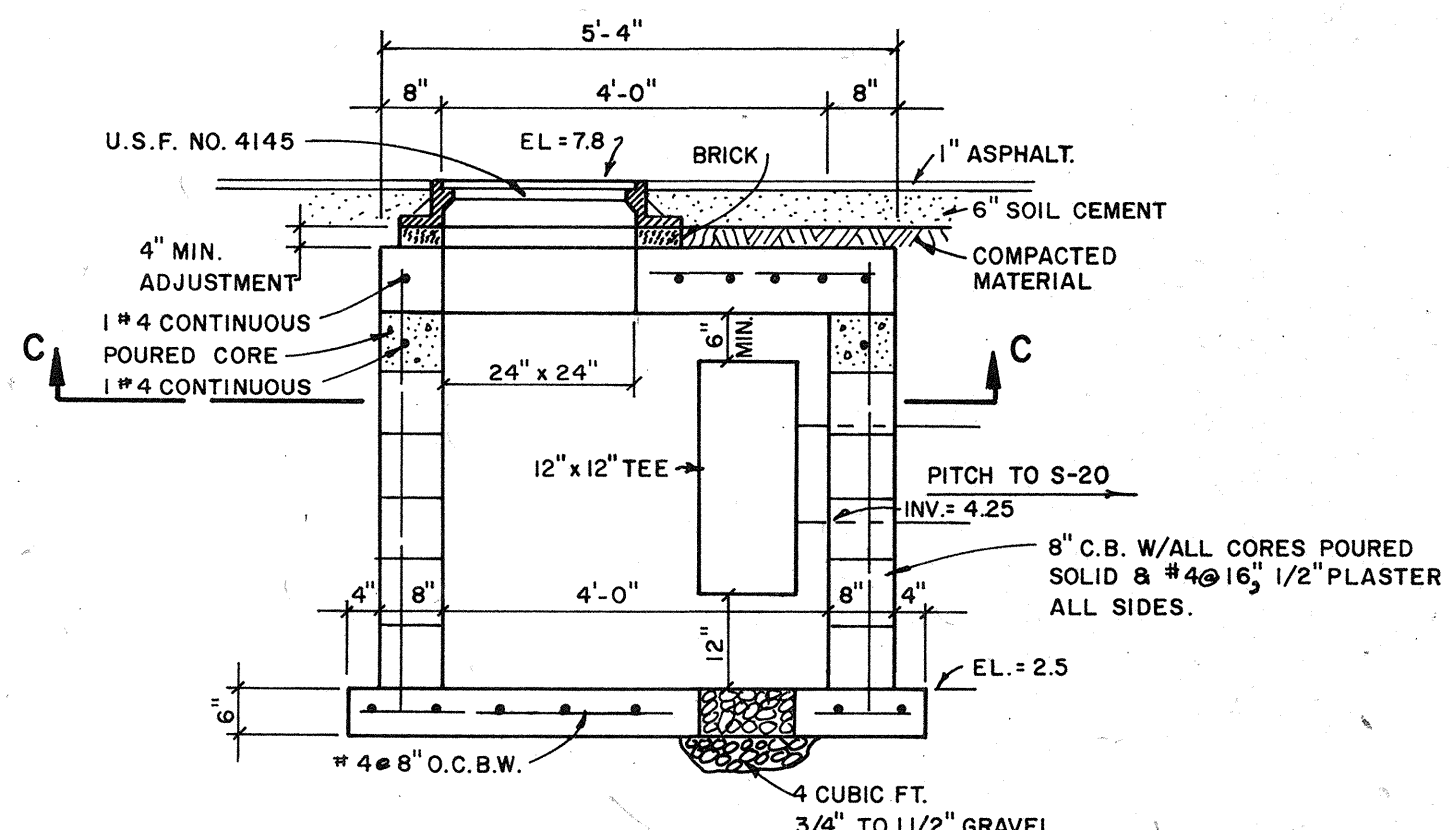
CURBS POURED WITH CONTINUOUS PAVING MACHINE SHALL HAVE JOINTS SAW CUT EVERY 10' FOLLOWING COMPLETION OF POUR. CONSTRUCTION JOINTS SHALL BE 10' O.C. AND 1/2" PREMOLDED EXP. JOINTS AT 40' O.C.



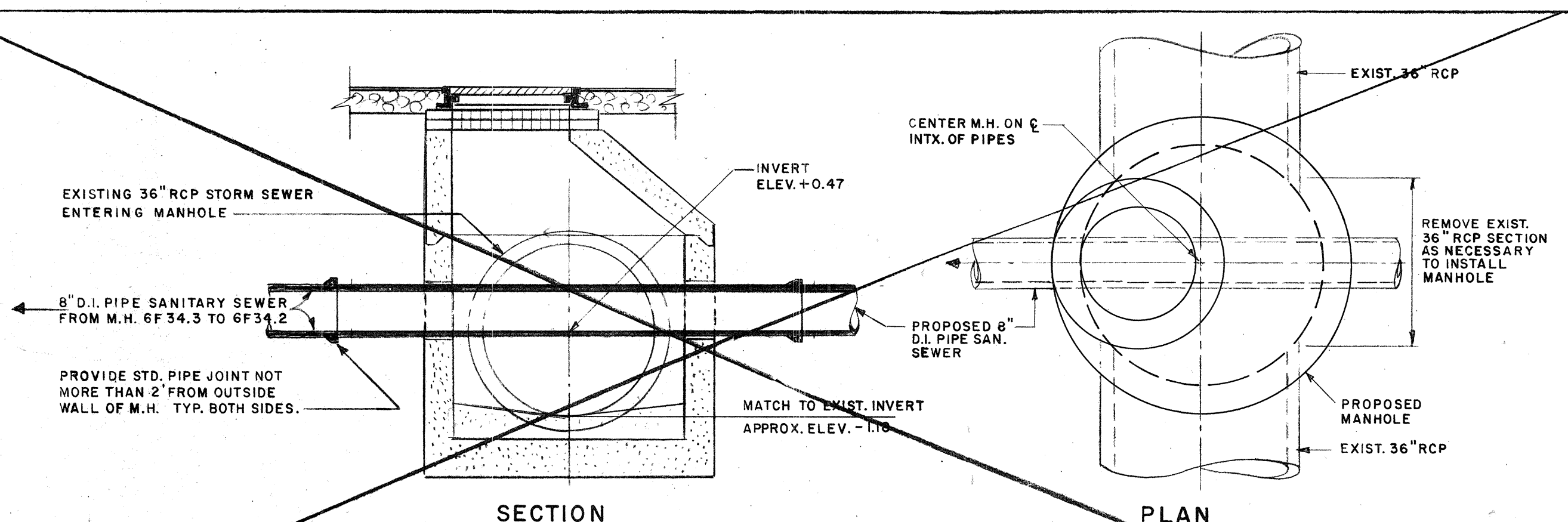
SECTION C C
(SLAB REMOVED)



PLAN-SLAB



DETAIL OF STORM SEWER INLET S-21
WITH OIL SEPARATION CHAMBER
N.T.S.



SECTION

PLAN

VOID - NOT USED
DETAIL OF STRUCTURE S-1

SCALE: 1/2" = 1'-0"

NOTE: THIS STRUCTURE TO BE A PRECAST MANHOLE. SEE DWG. NO. 191-571.

| | | | |
|--|----------|---|-------|
| ARVIDA CORPORATION HARBORSIDE CLUBHOUSE | | BENNETT & BISHOP ENGINEERS & SURVEYORS SARASOTA FLORIDA | |
| DATE | SCALE | DESIGN | DRAWN |
| APR. 17, 1982 | AS SHOWN | N.A. | N.A. |
| CHECK | APPROVED | DATE | BY |
| 3-5-82 | 3-5-82 | 10/17/82 | M.K. |
| GENERAL REVISION | | DESCRIPTION | |
| 2-3-84 | | DE. OP. INLET FLANGE ADDED | |
| 3-5-82 | | ADDED TYPICAL DROP INLET DETAIL | |
| 03/13/83 | | | |
| SARASOTA CO., FLORIDA | | LONGBOAT KEY | |
| 191-36A | | 13 | |