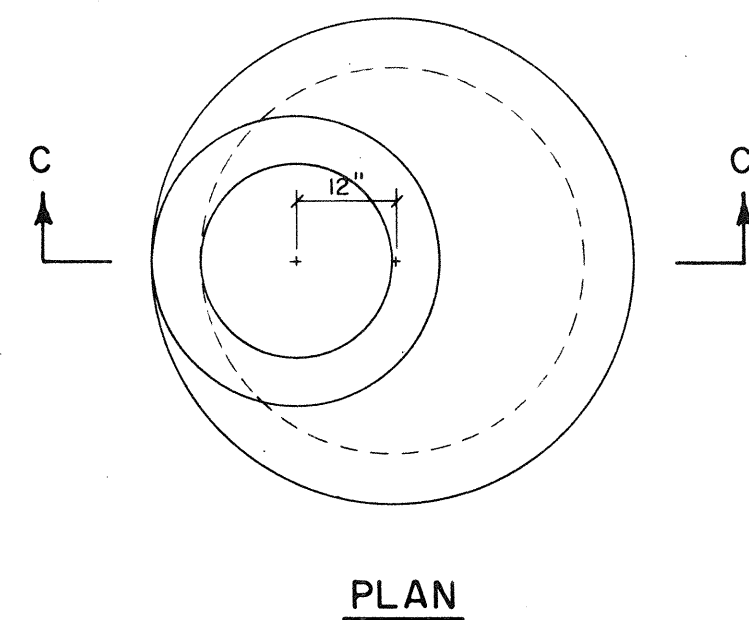
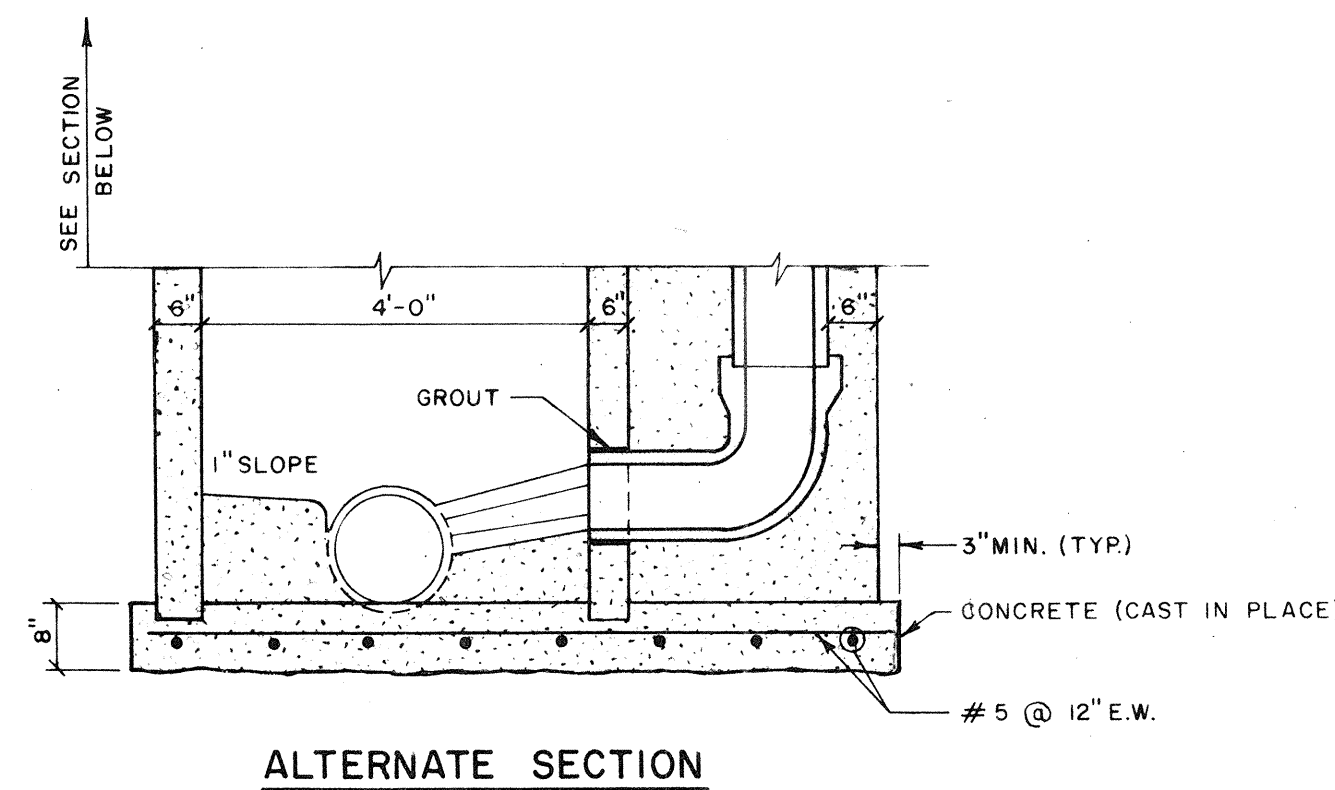


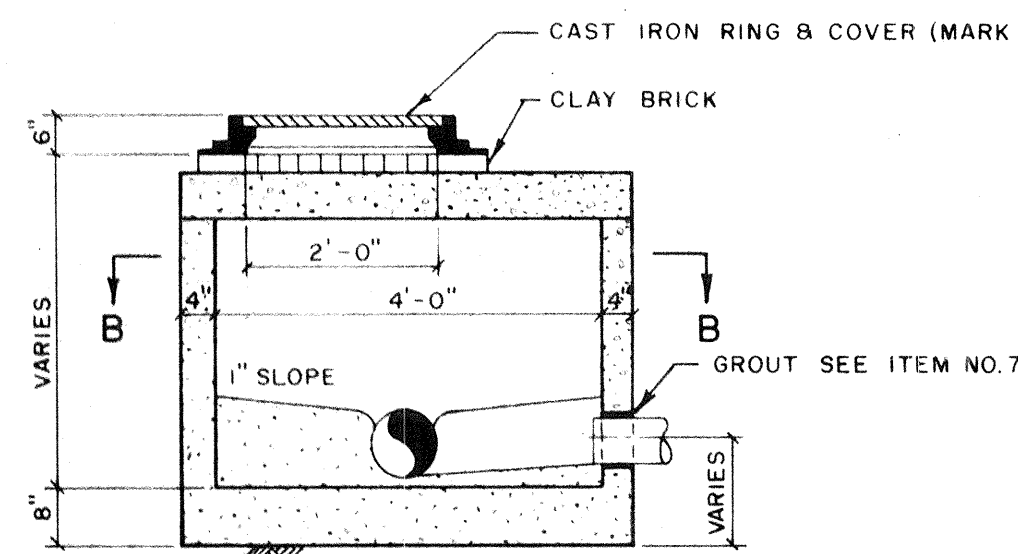
PLAN



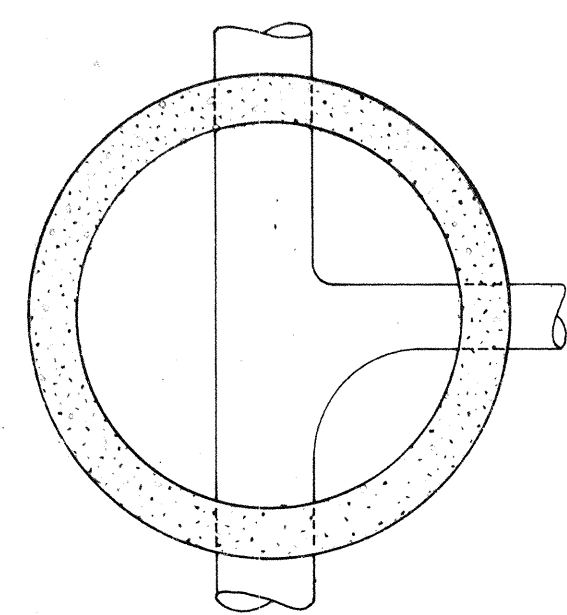
PLAN



ALTERNATE SECTION

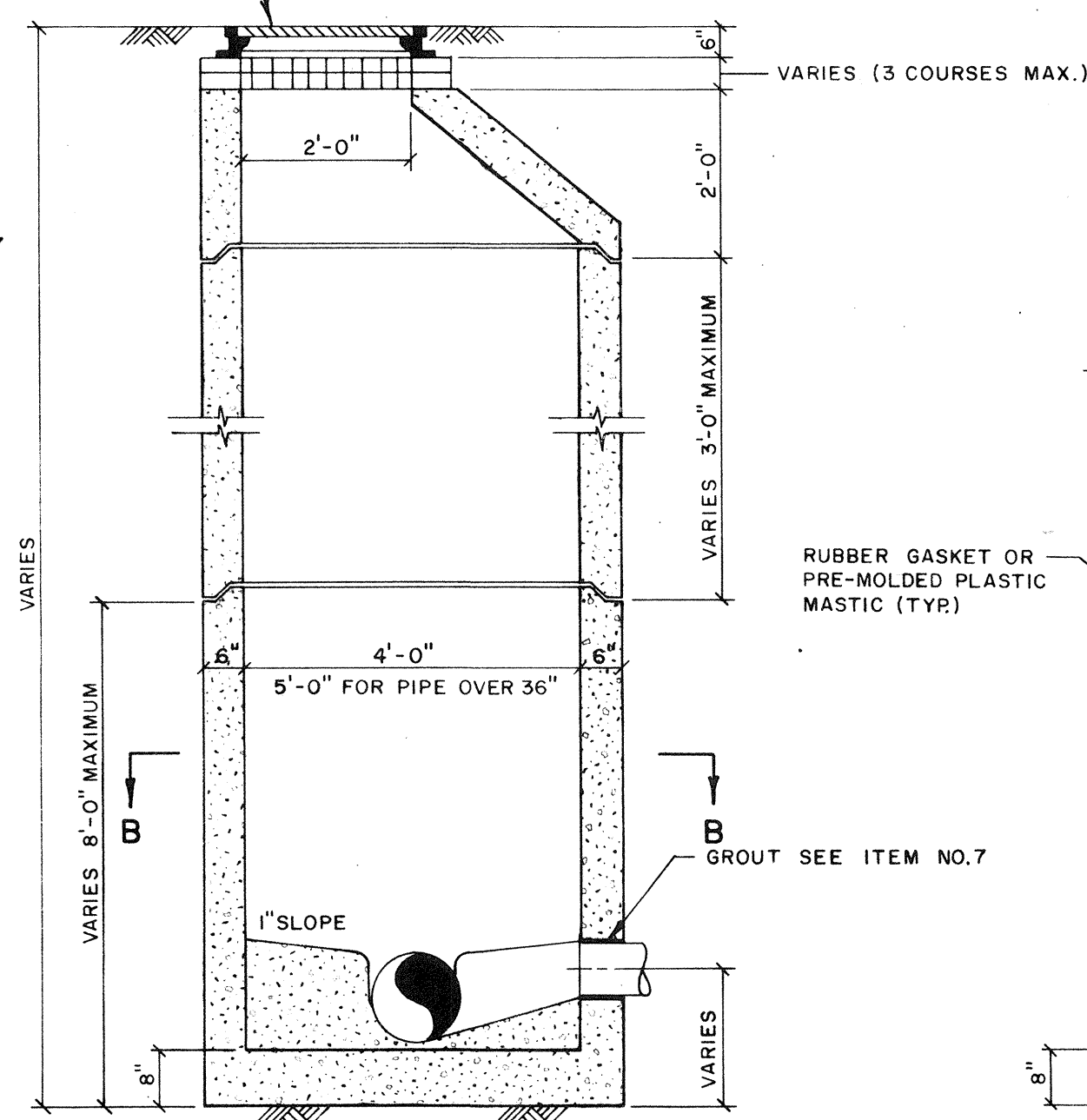


SECTION A-A



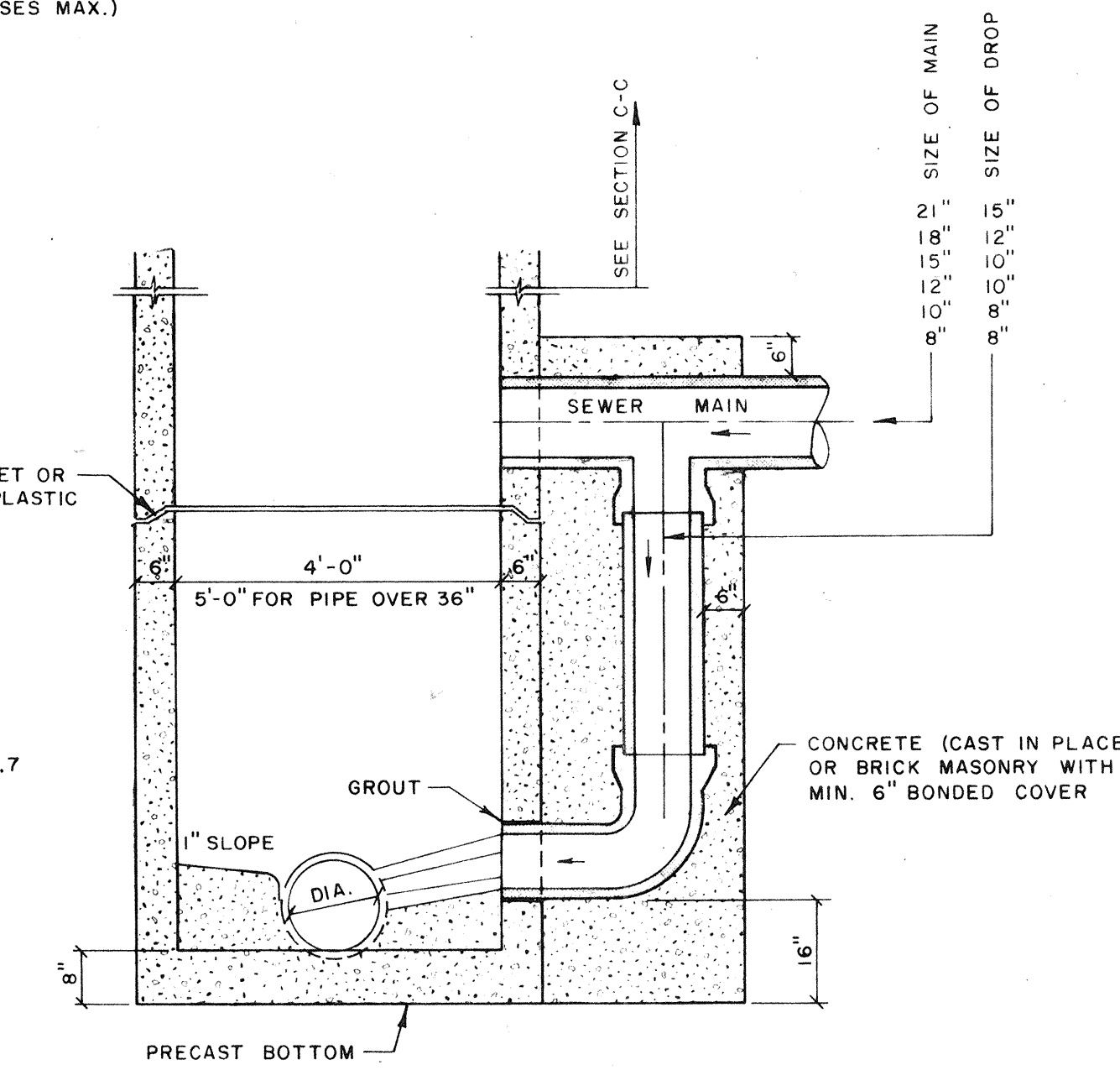
SECTION B-B

FOR DEPTHS 5'-0" & LESS
SCALE: 1/2" = 1'-0"



SECTION C-C

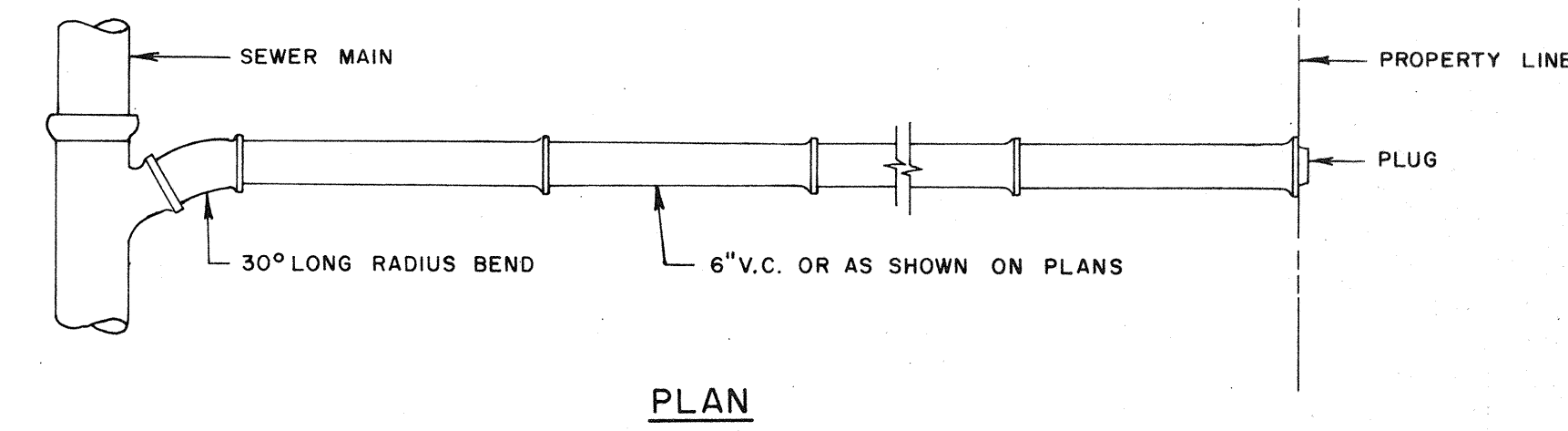
FOR DEPTHS OVER 5'-0"
SCALE: 1/2" = 1'-0"



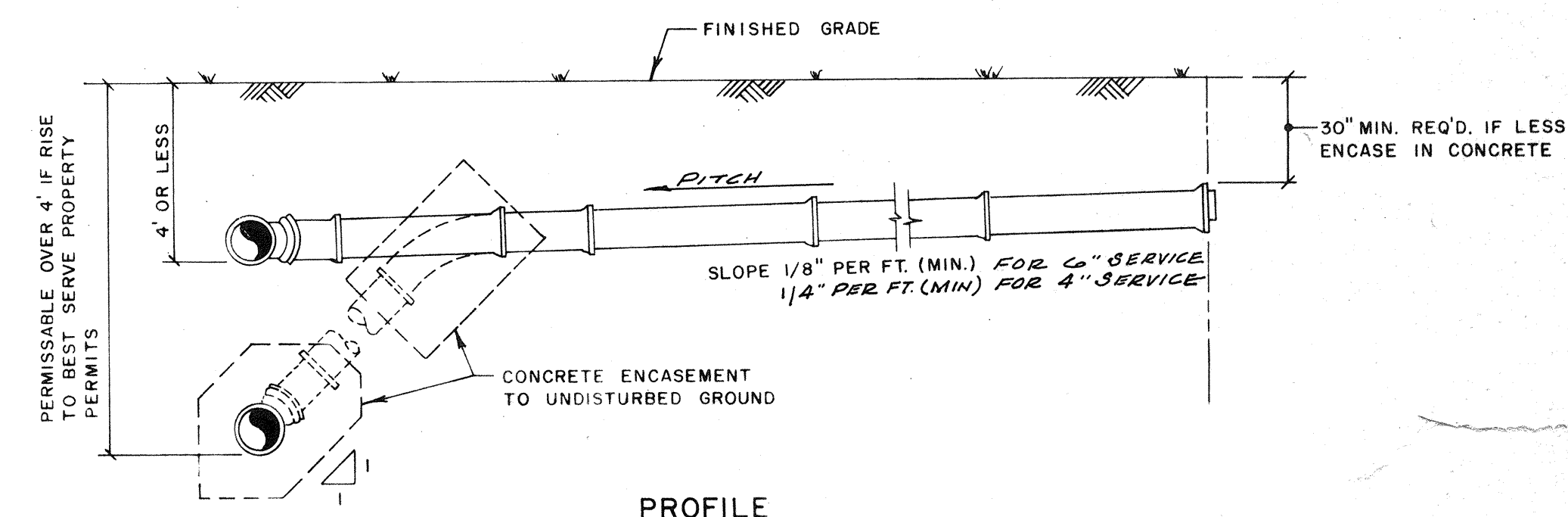
SECTION

DROP MANHOLE
SCALE: 1/2" = 1'-0"

NOTE: ALL SERVICE SHALL BE INSTALLED IN CONFORMANCE WITH PLUMBING CODE SPEC'S.

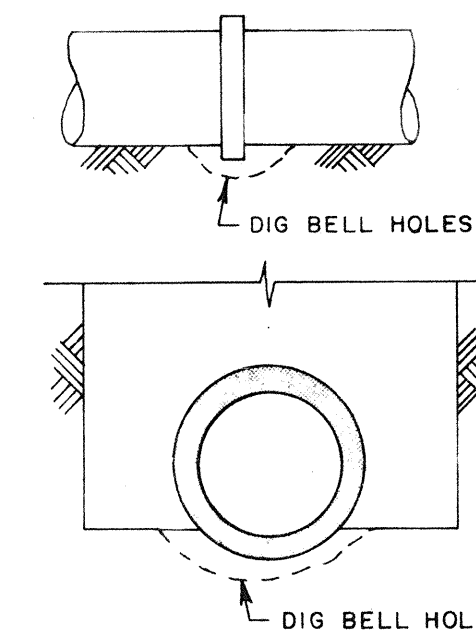


PLAN

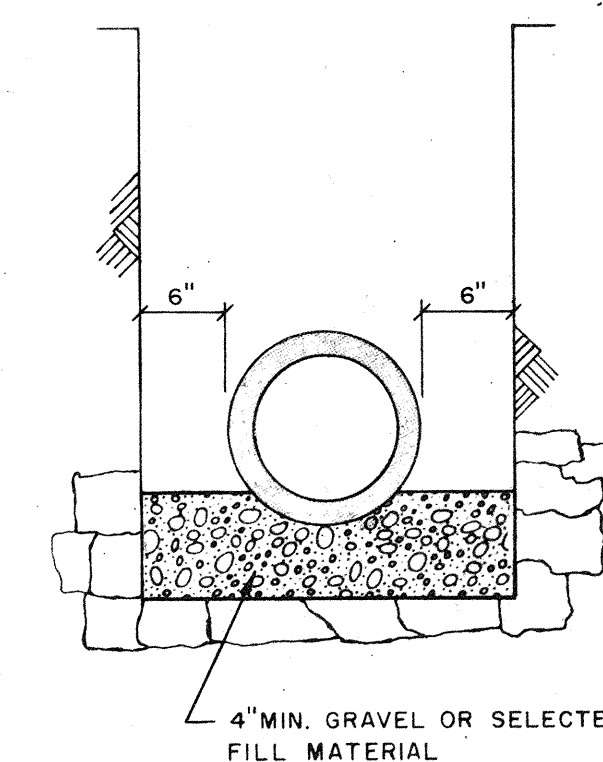


PROFILE

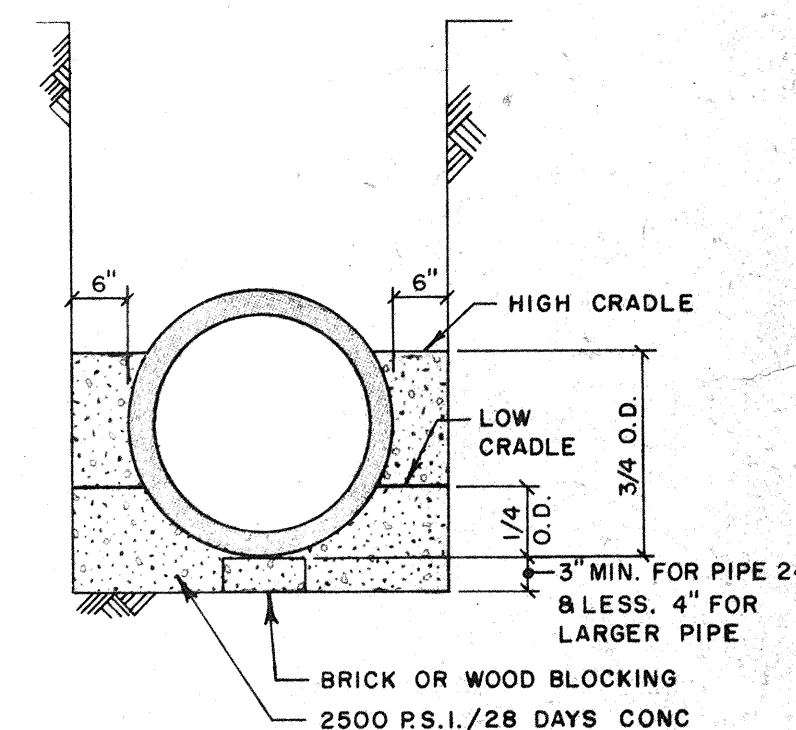
TYPICAL SERVICE CONNECTION
NO SCALE



TRENCH IN EARTH



TRENCH IN ROCK



CONCRETE CRADLES

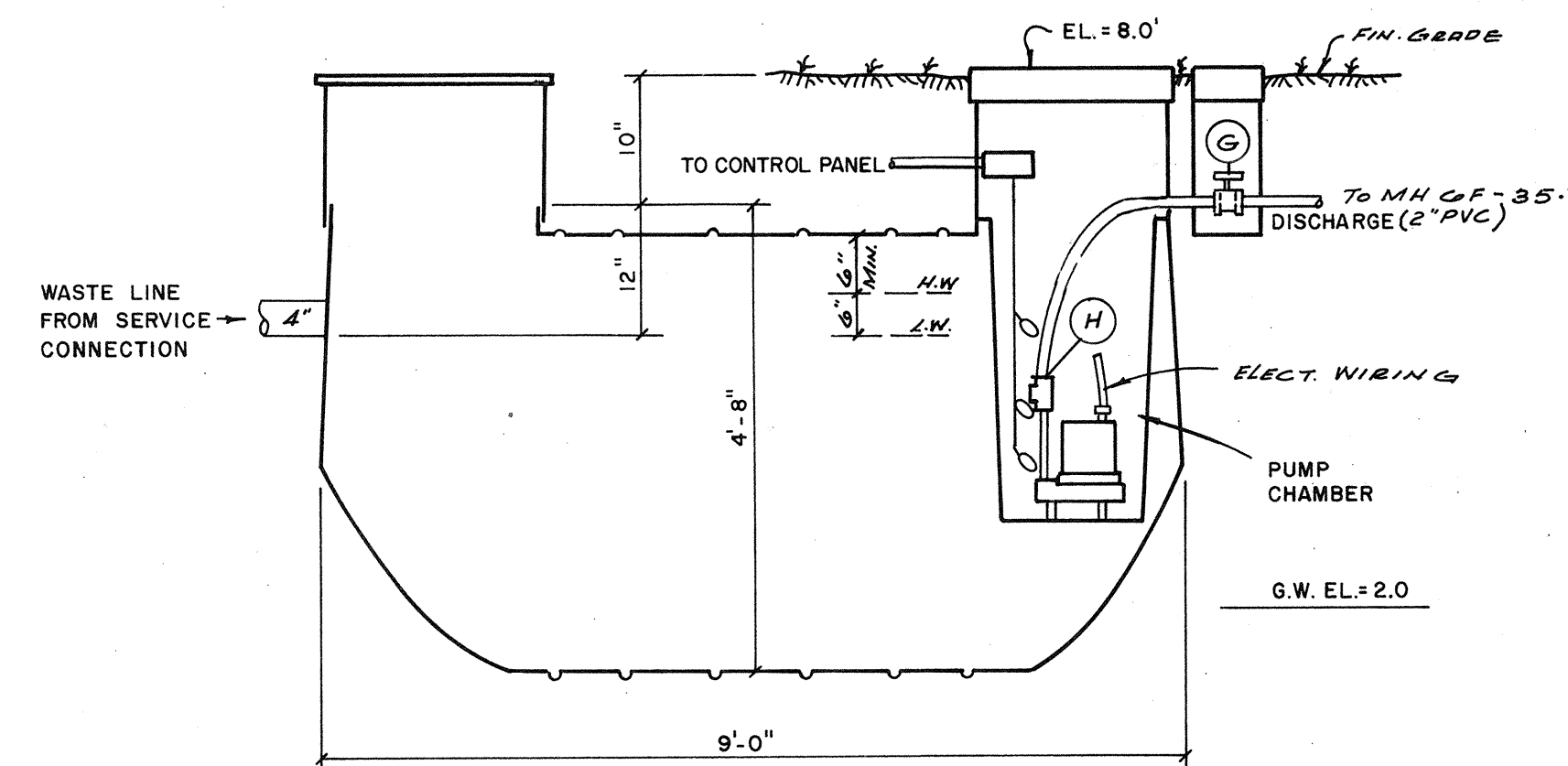
TYPICAL EXCAVATION & PIPE SETTINGS
NO SCALE

MANHOLE SPECIFICATIONS:

1. MANHOLES SHALL COMPLY WITH A.S.T.M. SPECS. C-478, LATEST REVISION, "PRECAST REINFORCED CONCRETE MANHOLE SECTIONS."
2. CONCRETE SHALL BE 4,000 P.S.I./28 DAY MINIMUM STRENGTH, WITH TYPE I CEMENT.
3. HEAVY DUTY MANHOLE RING (6" HIGH) AND COVER SHALL BE TYPE B (DWG. NO. 240; O.D. NO. 24) WITH FRAME & BOLTED COVER (333LB) WITH 4 S.S. BOLTS, NEOPRENE GASKET & BLIND PICKHOLE AS MANUFACTURED BY U.S. FOUNDRY CORP., MIAMI, FLORIDA, OR APPROVED EQUAL, WITH THE WORDS "WASTE WATER" CAST INTO THE COVER.
4. REINFORCING PER A.S.T.M. SPEC. C-478, LATEST REV.
5. LEVELING BRICKS TO BE CLAY; MORTAR TO BE 2 PARTS CLEAN SAND AND 1 PART CEMENT WITH NO MORE THAN 1/4 PART HYDRATED LIME, WITH JOINTS FULL & STRUCK FLUSH.
6. NO STEPS SHALL BE USED.
7. COMPLETELY FILL SPACE BETWEEN PIPES AND MANHOLE WALL WITH CEMENT MORTAR AFTER PIPE IS SET WITH 15LB. EMBECO PER 100LB. CEMENT.

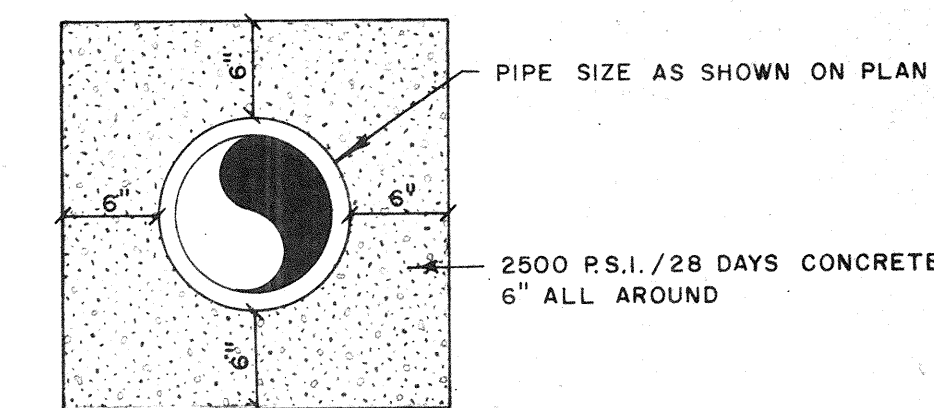
GENERAL NOTES:

1. WHERE WATER & WASTEWATER MAINS CROSS WITH LESS THAN 18" VERTICAL CLEARANCE, THE WASTEWATER PIPE SHALL BE OF EITHER CAST IRON OR CONCRETE ENCASED VITRIFIED CLAY, (20' MIN.) CENTERED ON THE POINT OF CROSSING.
2. PARALLEL WATER & WASTEWATER MAINS SHALL MAINTAIN A HORIZONTAL SEPARATION OF AT LEAST 10' WHERE PRACTICAL.
3. WHERE STORMWATER SEWERS CROSS OVER WASTEWATER SEWERS WITH LESS THAN 12" VERTICAL CLEARANCE, THE WASTEWATER PIPE SHALL BE OF EITHER CAST IRON OR CONCRETE ENCASED VITRIFIED CLAY, 10' MINIMUM EITHER SIDE OF CROSSING.



ALTERNATE
750 GAL. FIBERGLASS SEPTIC TANK

4'-6" WIDE x 9'-0" LONG
(See Sheet No 10 for Elect. & Mech Details)



CONCRETE ENCASEMENT
NO SCALE

BENNETT & BISHOP
CONSULTING ENGINEERS & SURVEYORS
SARASOTA FLORIDA

APPROVED BY: *[Signature]*

DATE	SCALE	DESIGN	DRAWN	CHECK	APPROVED	DESCRIPTION
Apr. 17, 1982	AS SHOWN					
						7-19-84 SERVICE PITCH ADDED
						7-3-84 GENERAL REVISION

ARVIDA CORPORATION
HARBORSIDE CLUBHOUSE
SANITARY SEWER DETAILS

LONGBOAT KEY
SARASOTA Co., FLA.
DATE: _____
SCALE: _____
DESIGN: _____
DRAWN: _____
CHECK: _____
APPROVED: _____
DESCRIPTION: _____

DRWG. NO. 191-36A
10