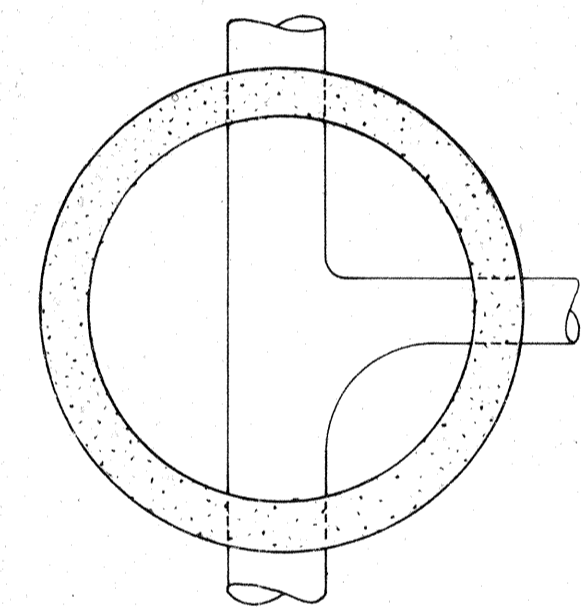
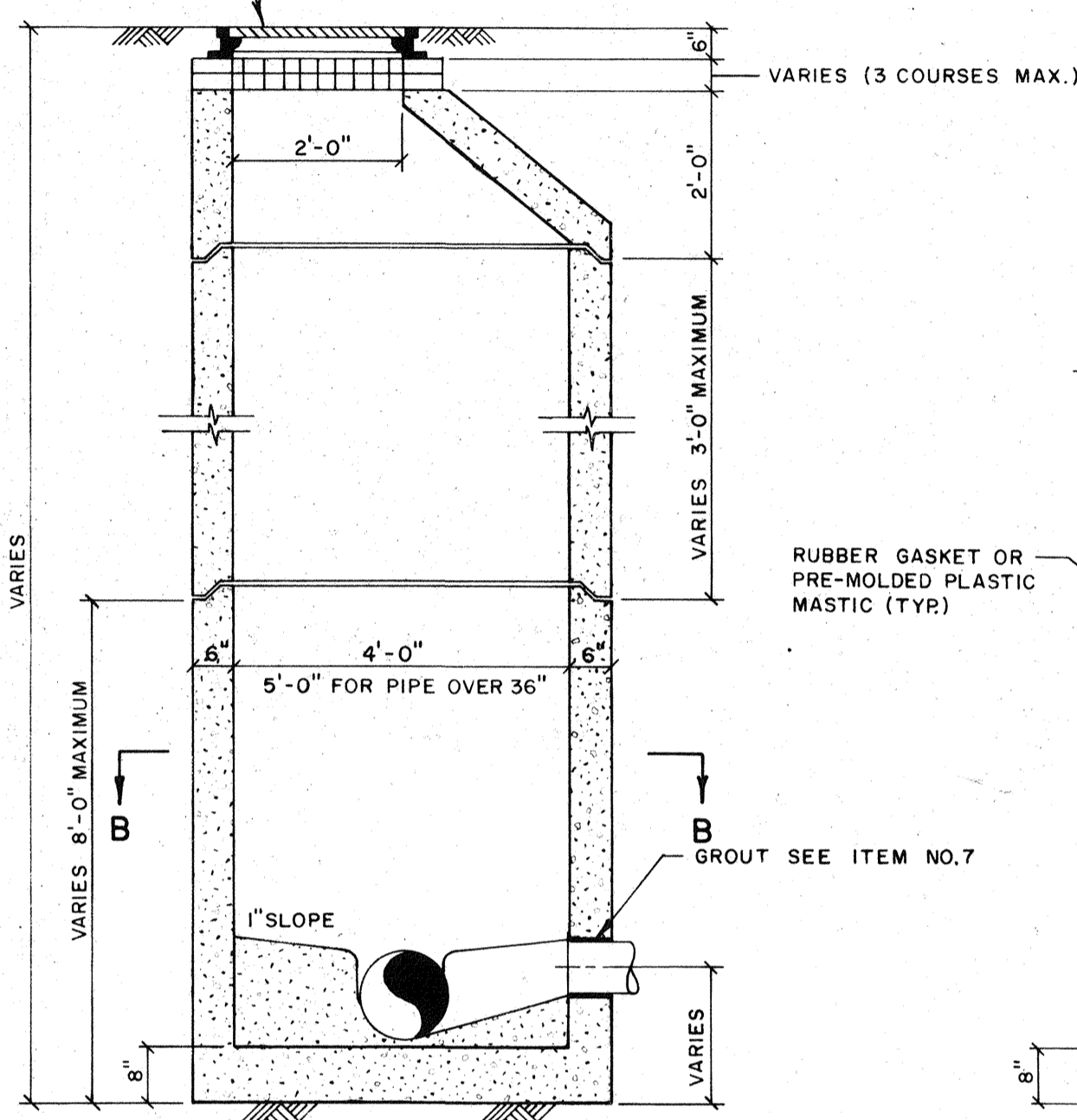


SECTION A-A



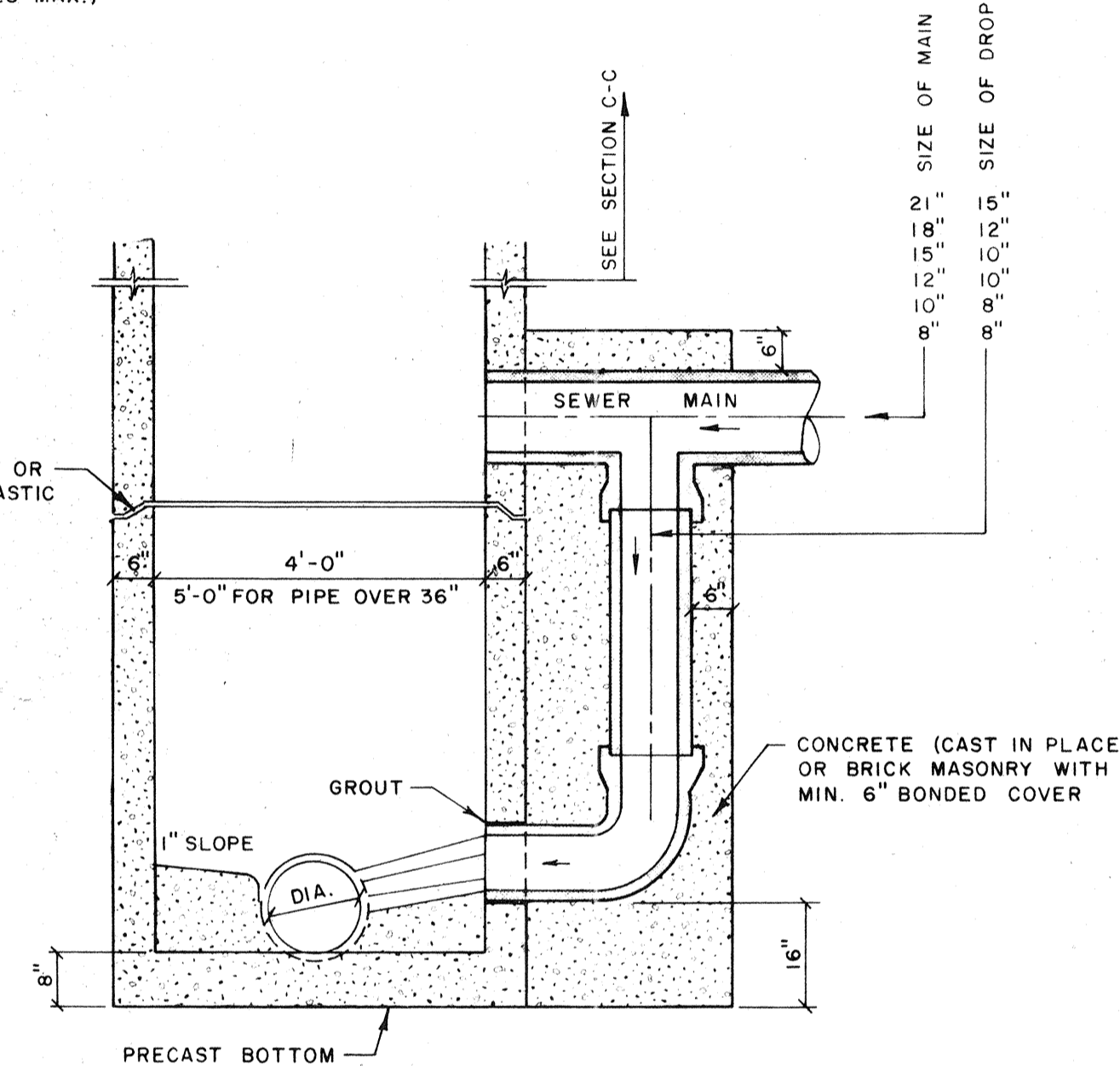
SECTION B-B

FOR DEPTHS 5'-0" & LESS  
SCALE: 1/2" = 1'-0"



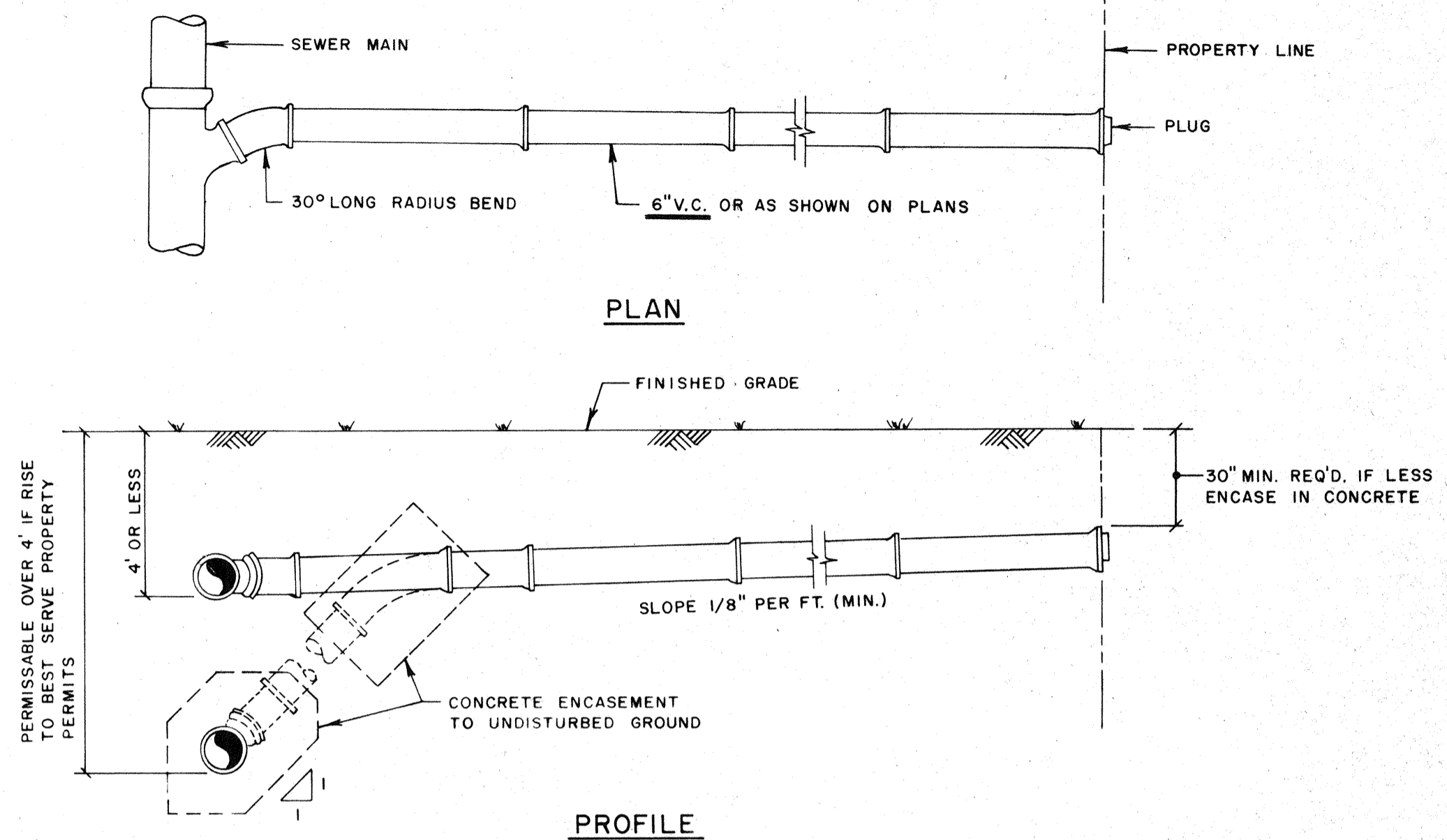
SECTION C-C

FOR DEPTHS OVER 5'-0"  
SCALE: 1/2" = 1'-0"

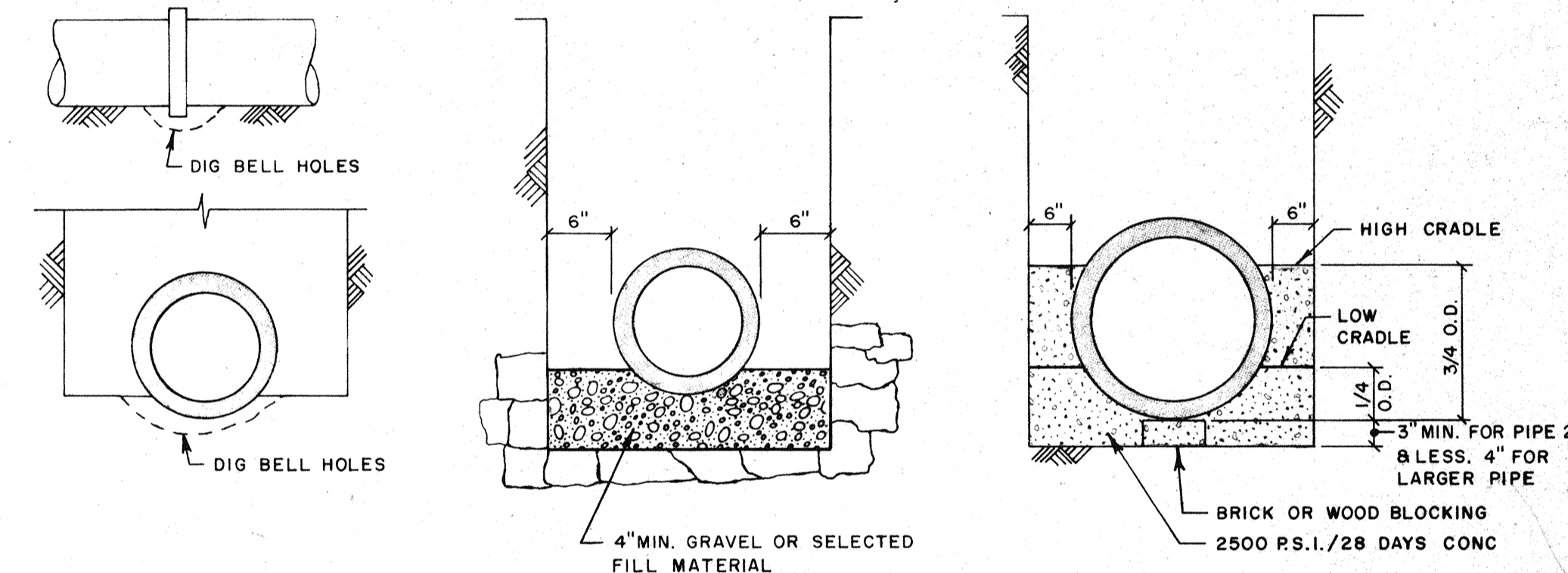


SECTION

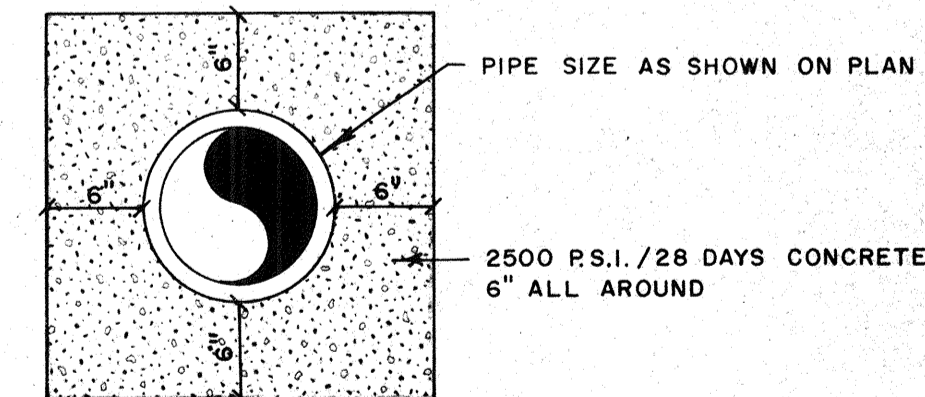
DROP MANHOLE  
SCALE: 1/2" = 1'-0"



TYPICAL SERVICE CONNECTION  
NO SCALE



TYPICAL EXCAVATION & PIPE SETTINGS  
NO SCALE



CONCRETE ENCASEMENT  
NO SCALE

MANHOLE SPECIFICATIONS:

1. MANHOLES SHALL COMPLY WITH A.S.T.M. SPECS. C-478, LATEST REVISION, "PRECAST REINFORCED CONCRETE MANHOLE SECTIONS."
2. CONCRETE SHALL BE 4,000 P.S.I./28 DAY MINIMUM STRENGTH, WITH TYPE X CEMENT.
3. HEAVY DUTY MANHOLE RING (6" HIGH) AND COVER SHALL BE TYPE B (DWG. NO. 240; OLD NO. 24) WITH FRAME & BOLTED COVER (333LB) WITH 4 S.S. BOLTS, NEOPRENE GASKET & BLIND PICKHOLE AS MANUFACTURED BY U.S. FOUNDRY CORP., MIAMI, FLORIDA, OR APPROVED EQUAL, WITH THE WORDS "WASTEWATER" CAST INTO THE COVER.
4. REINFORCING PER A.S.T.M. SPEC. C-478, LATEST REV.
5. LEVELING BRICKS TO BE CLAY; MORTAR TO BE 2 PARTS CLEAN SAND AND 1 PART CEMENT WITH NO MORE THAN 1/4 PART HYDRATED LIME, WITH JOINTS FULL & STRUCK FLUSH.
6. NO STEPS SHALL BE USED.
7. COMPLETELY FILL SPACE BETWEEN PIPES AND MANHOLE WALL WITH CEMENT MORTAR AFTER PIPE IS SET WITH 15LB. EMBECO PER 100LB. CEMENT.

GENERAL NOTES:

1. WHERE WATER & WASTEWATER MAINS CROSS WITH LESS THAN 18" VERTICAL CLEARANCE, THE WASTEWATER PIPE SHALL BE OF EITHER CAST IRON OR CONCRETE ENCASED VITRIFIED CLAY, (20' MIN.) CENTERED ON THE POINT OF CROSSING.
2. PARALLEL WATER & WASTEWATER MAINS SHALL MAINTAIN A HORIZONTAL SEPARATION OF AT LEAST 10' WHERE PRACTICAL.
3. WHERE STORMWATER SEWERS CROSS OVER WASTEWATER SEWERS WITH LESS THAN 12" VERTICAL CLEARANCE, THE WASTEWATER PIPE SHALL BE OF EITHER CAST IRON OR CONCRETE ENCASED VITRIFIED CLAY, 10' MINIMUM EITHER SIDE OF CROSSING.

BENNETT & BISHOP  
SARASOTA FLORIDA  
CONSULTING ENGINEERS & SURVEYORS  
APPROVED BY: *William B. Bishop*

DATE	SCALE	DESIGN	DRAWN	CHECK	APPROVED	DESCRIPTION
	AS SHOWN		R.A.B.			

BAY ISLES UNIT No. 6  
ARVIDA CORPORATION  
FAIR OAKS LANE EXTENSION  
SANITARY SEWER DETAILS