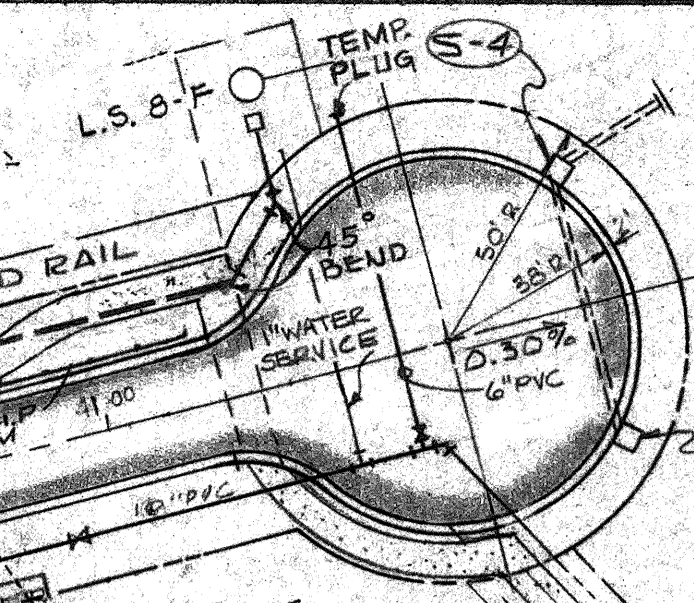


BAY ISLES UNIT No. 8

PARCEL "MF-1" (VICTORIA POINT)

MUD LAKE

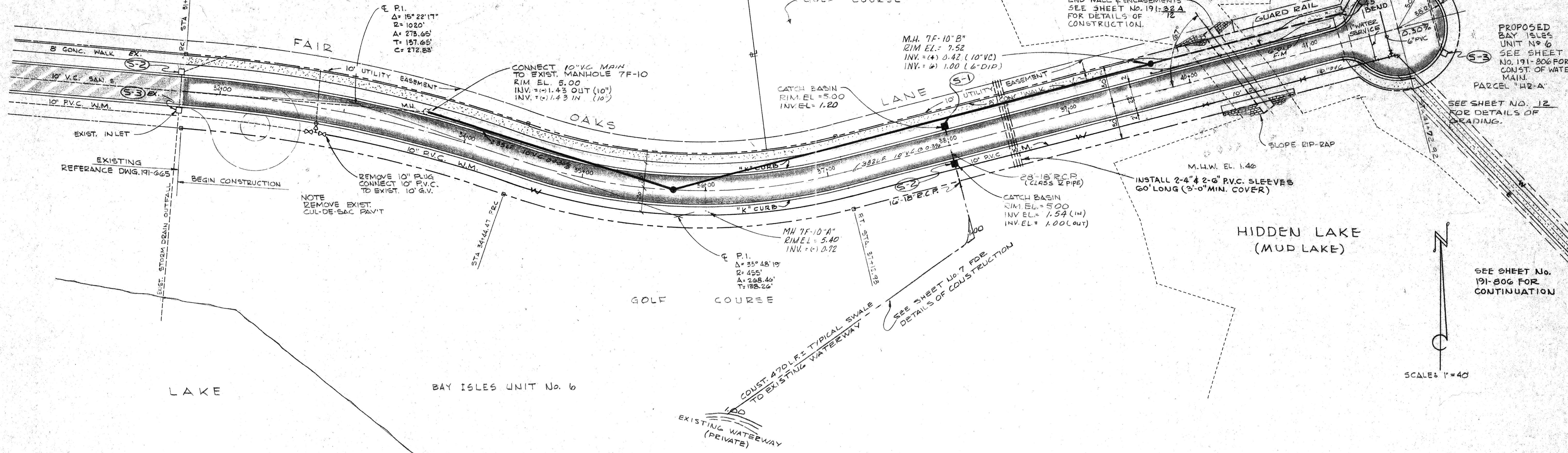
8' HIGH X 10' WIDE BOX CULVERT (PRECAST) W/ SAND CEMENT RIP-RAP END WALL & ENCASUREMENTS SEE SHEET NO. 191-322 A FOR DETAILS OF CONSTRUCTION.



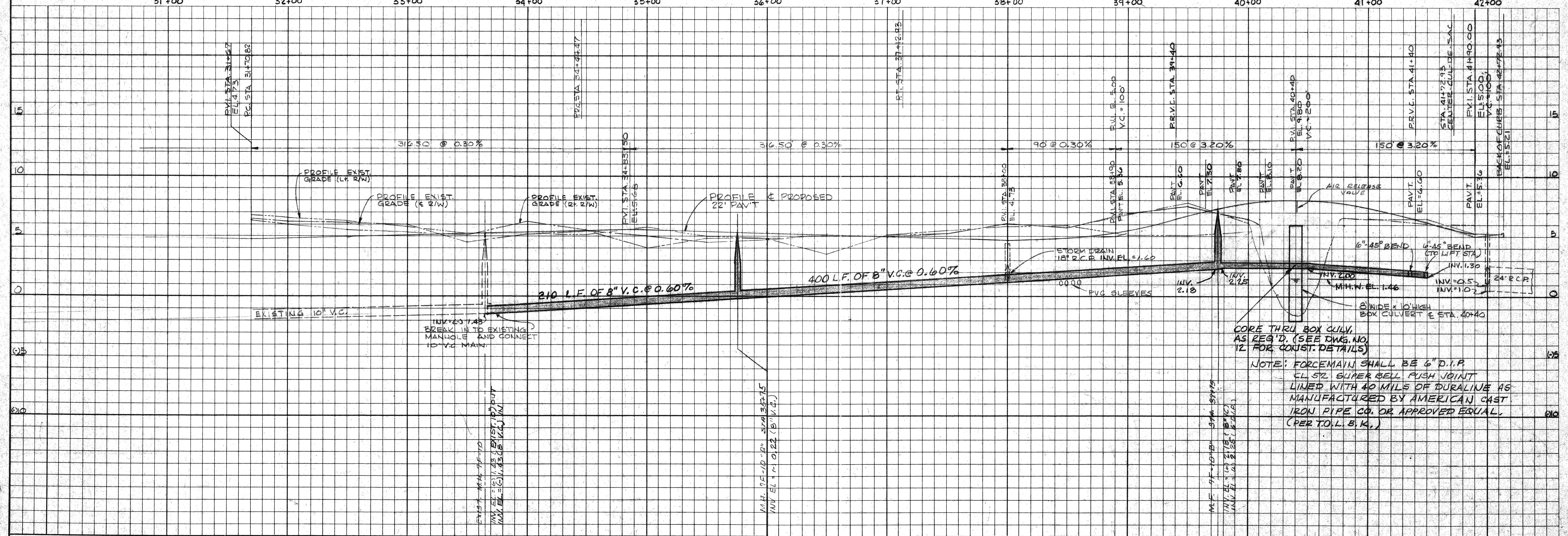
PROPOSED BAY ISLES UNIT No. 6 SEE SHEET NO. 191-806 FOR CONST. OF WATER MAIN. PARCEL "H2-A" SEE SHEET NO. 12 FOR DETAILS OF GRADING.

SEE SHEET NO. 191-806 FOR CONTINUATION

SCALE: 1"=40'



31+00 32+00 33+00 34+00 35+00 36+00 37+00 38+00 39+00 40+00 41+00 42+00



CORE THRU BOX CULV. AS REQ'D. (SEE DWG. NO. 12 FOR CONST. DETAILS)
NOTE: FORCE MAIN SHALL BE 6" D.I.P. CL 512. SUPER BELL PUSH JOINT LINED WITH 40 MILS OF DURALINE AS MANUFACTURED BY AMERICAN CAST IRON PIPE CO. OR APPROVED EQUAL. (PER T.O.L.B.K.)

BENNETT & BISHOP
CONSULTING ENGINEERS & SURVEYORS
FLORIDA
SARASOTA

DATE	SCALE	DESIGN	DRAWN	CHECK	APPROVED
12-25-85	1"=40'	W.B.K.	W.B.K.	W.B.K.	W.B.K.
4-30-86	REV. PER T.O.L.B.K.				
4-19-85	M.H. 7F-10\"/>				
9-11-85	GENERAL REVISION				

DATE: 12-25-85
SCALE: 1"=40'
DESIGN: W.B.K.
DRAWN: W.B.K.
CHECK: W.B.K.
APPROVED: W.B.K.

SARASOTA, FLORIDA

ARVIDA CORPORATION
FAIR OAKS LANE EXTENSION
PLAN AND PROFILE

LONGBOAT, KEY

DWG. No. 191-32A
8