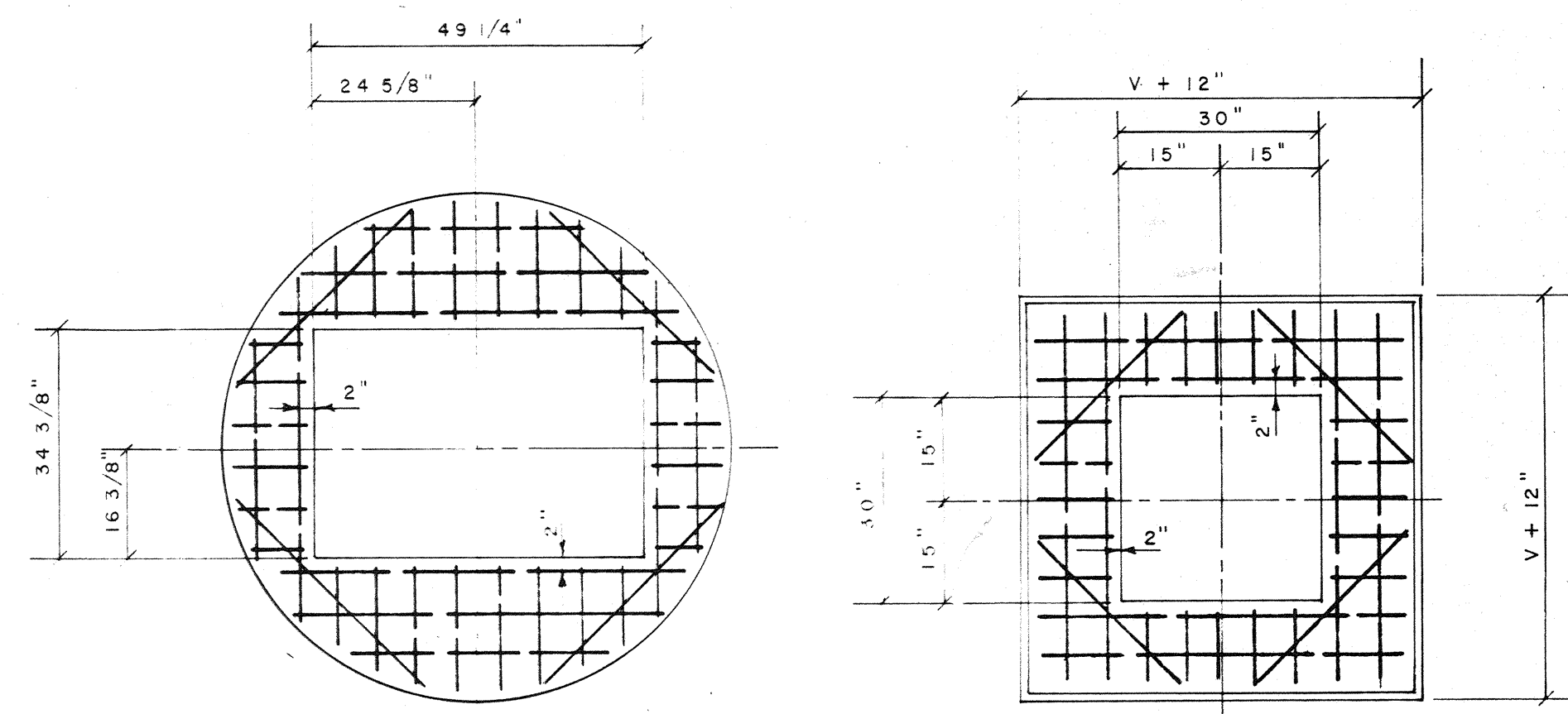
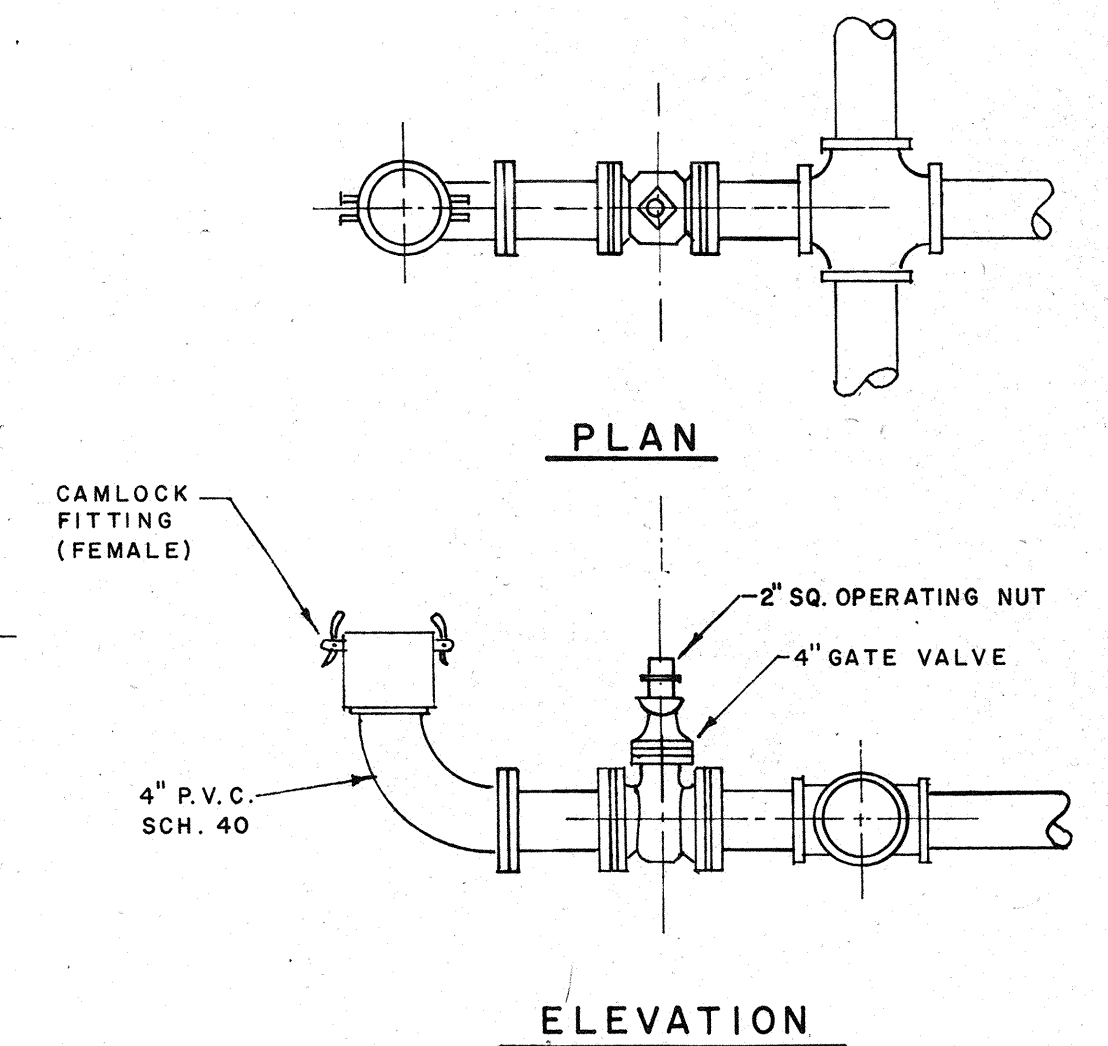


PLAN

AUXILIARY PLAN
LEFT OR RIGHT
DISCHARGE

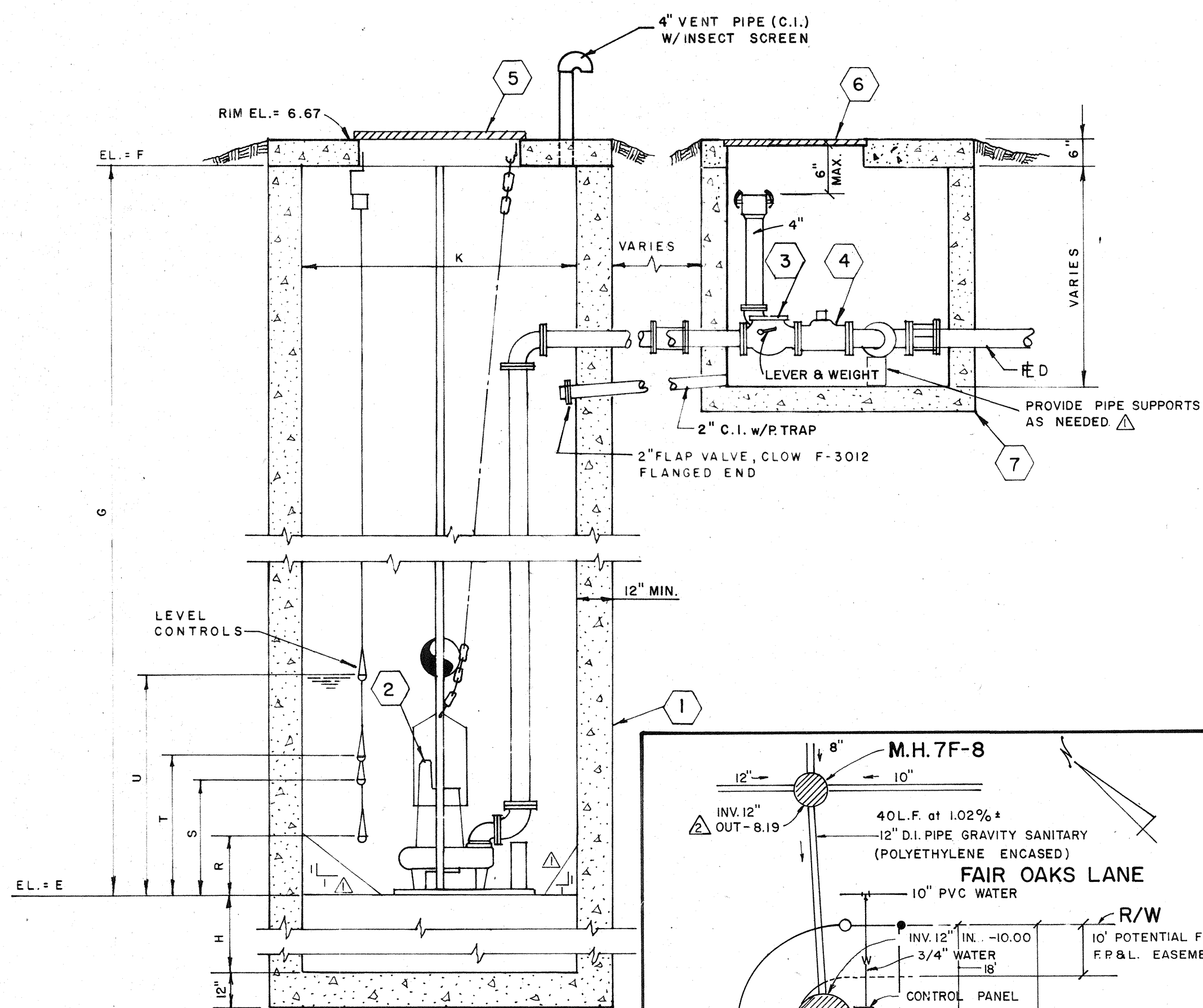


STEEL PLACEMENT IN COVERS

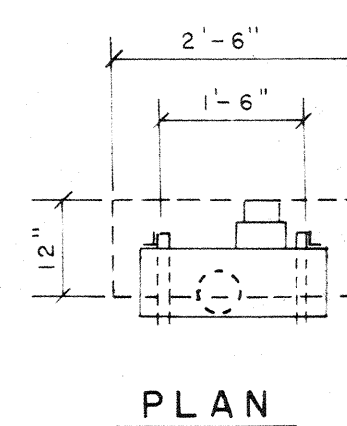


AUXILIARY PUMP DETAIL

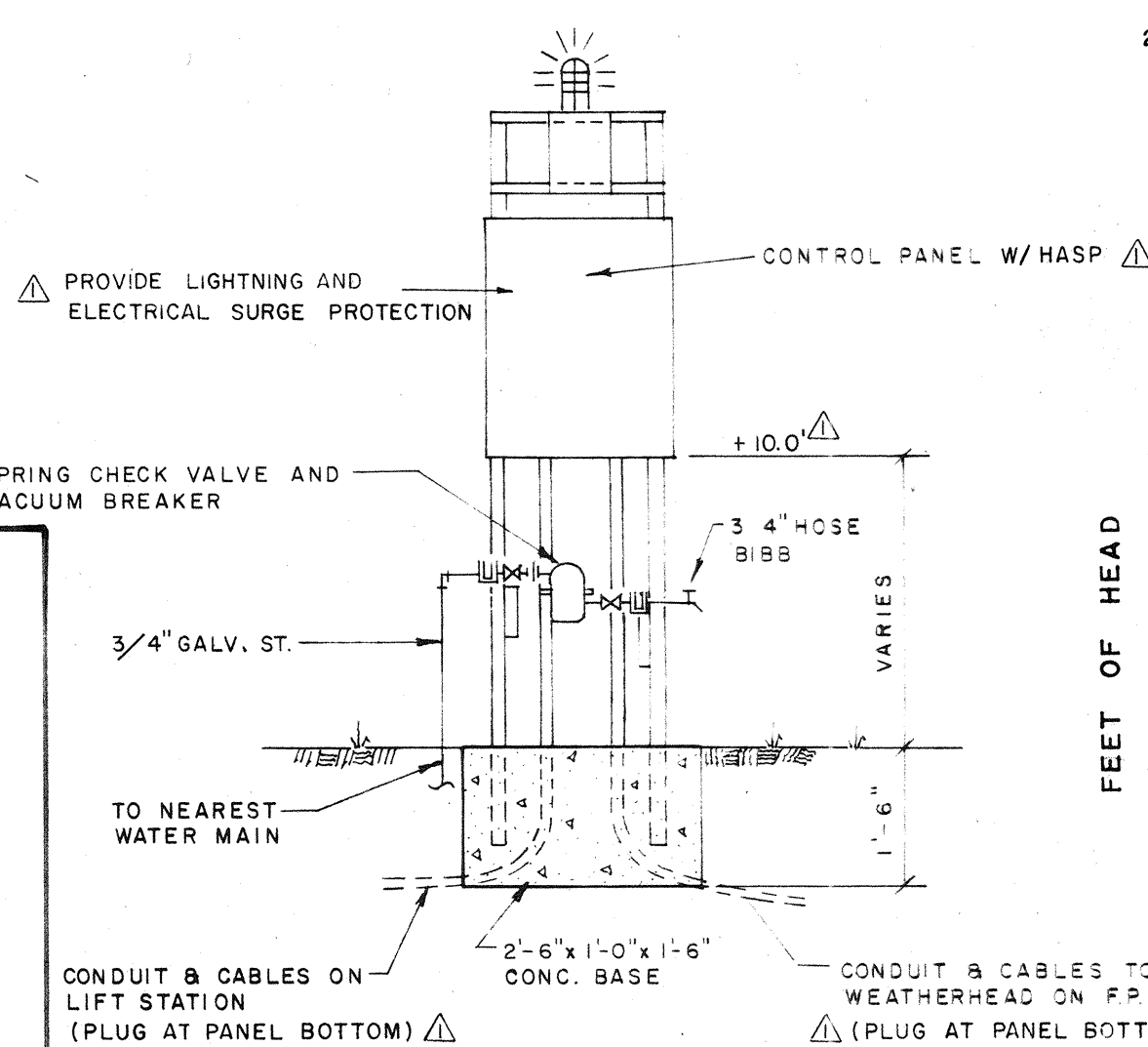
NOTE: LANDSCAPING TO BE COMPLETED BY OTHERS



SECTION "A-A"



PLAN

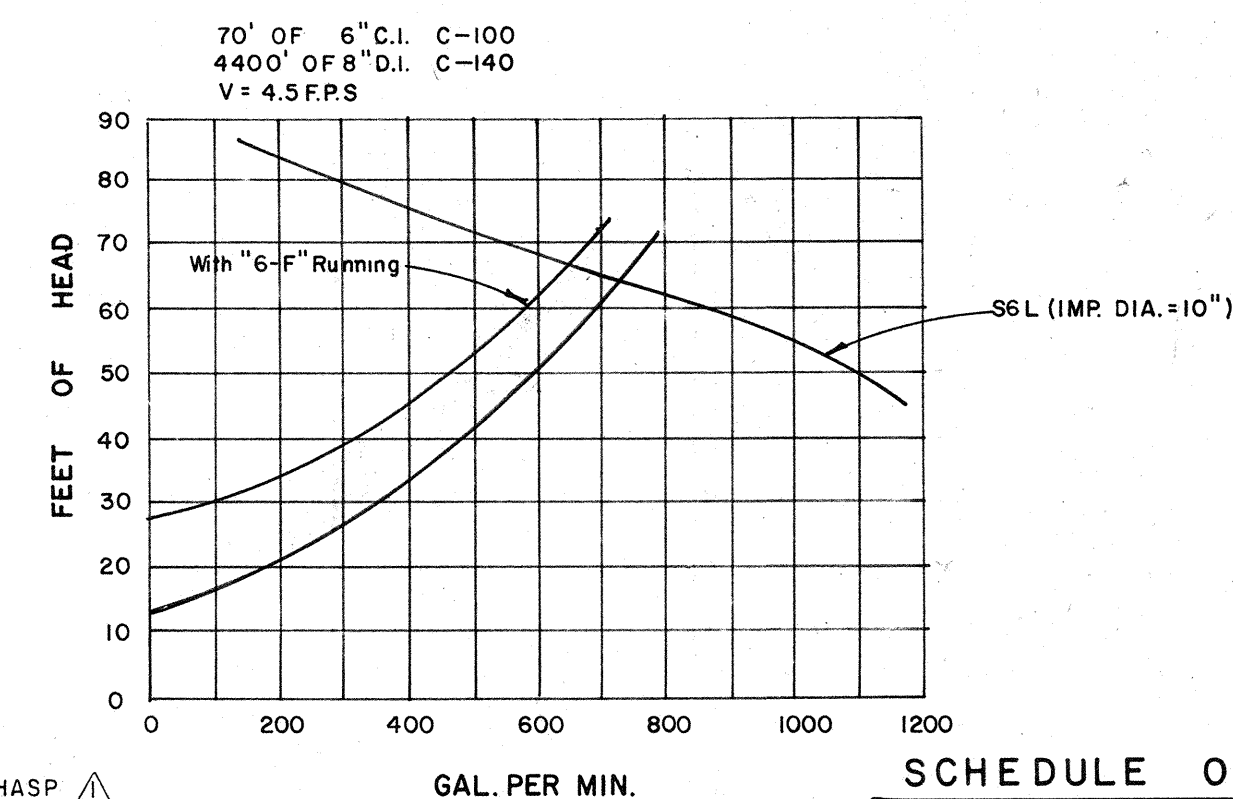


ELEVATION

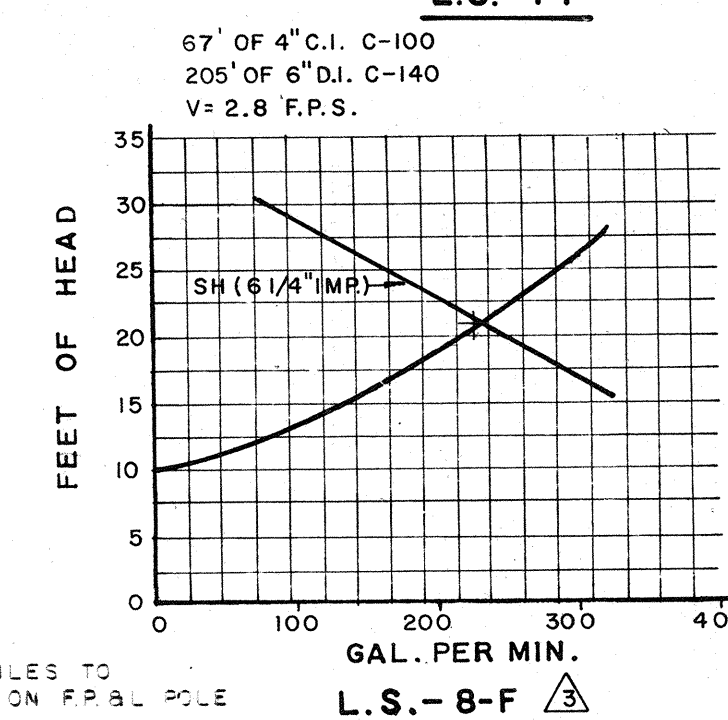
CONTROL PANEL

NOTES:

- ELECTRICAL SERVICE TO METER PAN BY OTHERS.
- SERVICE FROM METER PAN TO LIFT STATION (INCLUDING PANEL) BY CONTRACTOR.
- METER PAN SHALL BE LOCATED ON REAR OF CONTROL PANEL.
- ALL BARREL JOINTS SHALL BE MADE WATERTIGHT WITH AN APPROVED NEOPRENE GASKET AND GROUT.



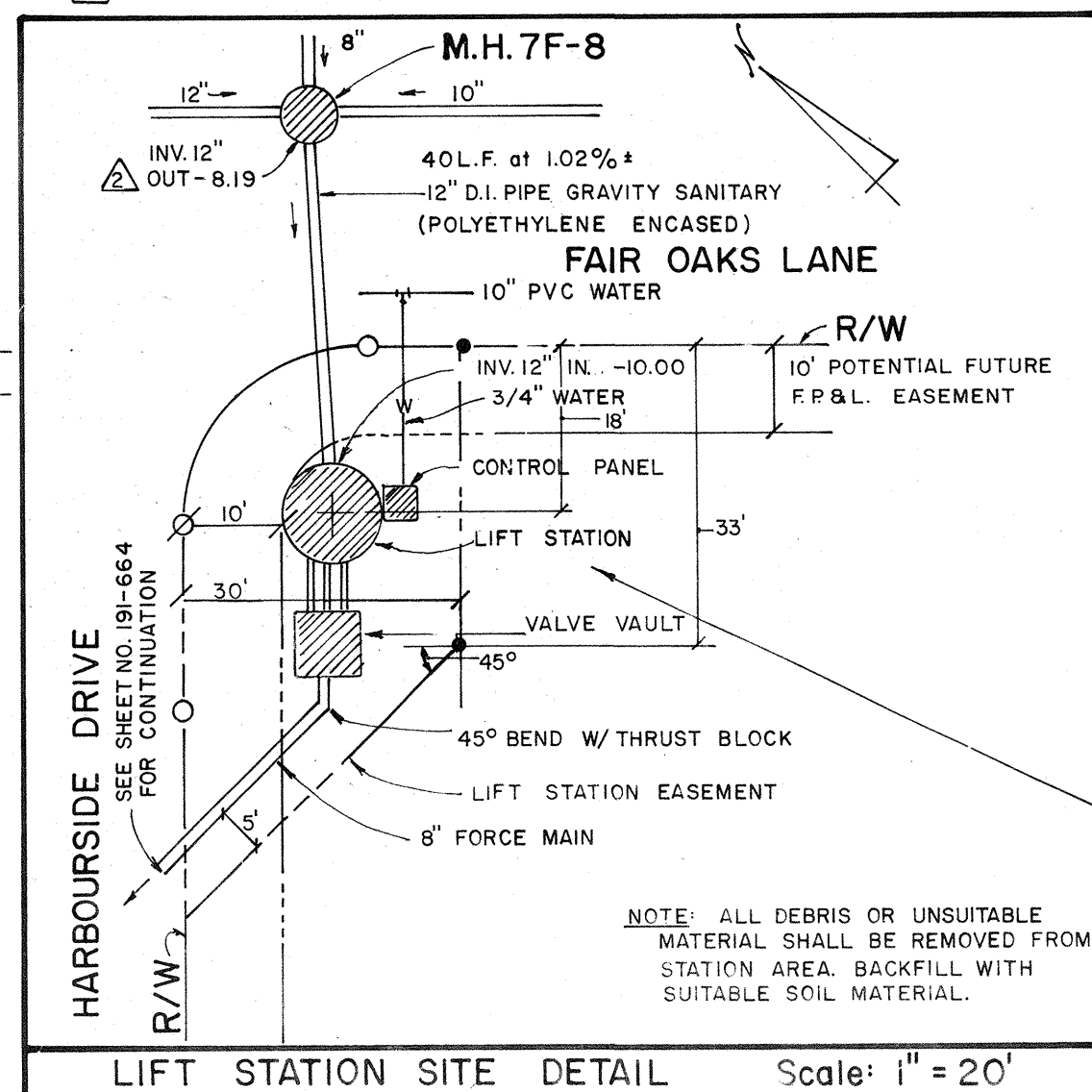
SCHEDULE OF LIFT STATION DATA



L.S.-8-F

LIFT STATION No.	7-F	BAY ISLES UNIT No. 6 8-F
A. TYPE	HYDR-O-MATIC	HYDR-O-MATIC
B. INF. PIPE SIZE	12"	10"
C. FL. LINE IN	-8.59	-5.0
D. FL. LINE OUT FM	2.0	1.0
E. LS INV.	-14.00	-10.00
F. GRADE ELEVATION	6.00	6.00
G. DEPTH TO INV.	20.0'	16.0
H. DEPTH OF BALLAST	2.0'	2.0
J. CY BALLAST	5.8	3.8
K. BARREL DIA. FT.	10.0'	8.0
L. PUMP MODEL	S6L	SH
M. H.P.	20	2
N. R.P.M.	1750	1750 RPM
P. VOLT/PHASE	460/3	460/3
Q. FM SIZE	8"	6"
R. OFF	1	12"
S. 1 PUMP	3'-6"	4'-0"
T. 2 PUMPS	4'-0"	4'-6"
U. H.W. ALARM	4'-6"	5'-0"
V. VALVE VAULT	6'-0"	6'-0"
W. DESIGN FLOW	688 G.P.M.	240 G.P.M.

Note: CHECK VALVE ECCENTRIC PLUG VALVE



LIFT STATION SITE DETAIL Scale: 1" = 20'

NOTE: A SOIL BORING LOG IS AVAILABLE FROM THE ENGINEER FOR ONE TEST BORING IN THE GENERAL VICINITY OF THE LIFT STATION.

MATERIAL SCHEDULE (See Note Below)

- | ITEM | DESCRIPTION |
|------|--|
| 1. | PRECAST CONCRETE WET WELL
NOTE: SHOP DRAWINGS REQUIRED. |
| 2. | PUMPS, HYDR-O-MATIC, SEE SCHEDULE. |
| 3. | CHECK VALVE 6" UNLESS OTHERWISE NOTED. |
| 4. | ECCENTRIC PLUG VALVE 6" UNLESS OTHERWISE NOTED. |
| 5. | ACCESS HATCH COVER, 4'-0" x 2'-6" OPENING, HYDR-O-MATIC. |
| 6. | ACCESS HATCH COVER, 2'-6" x 2'-6" OPENING, ALUMINUM WITH S.S. FASTENINGS. W/HASP |
| 7. | PRECAST CONCRETE VALVE VAULT
NOTE: SHOP DRAWINGS REQUIRED. |
| 8. | AUXILIARY PUMP CONNECTION, SEE DETAIL. |
| 9. | BRACKET FOR FLOAT WIRES, LIFTING RINGS, NUTS AND WASHERS TO BE STAINLESS STEEL. |
| 10. | CONTROL PANEL TO HAVE TRANSFER SWITCH FOR EMERGENCY POWER. |

BENNETT & BISHOP
CONSULTING ENGINEERS & SURVEYORS
FLORIDA

REV.	DATE	DESCRIPTION
4/30/85		REV. PER T.O.L.B.K.
3/14/85		ADDED HYDR-O-MATIC INFO.
JULY 25, 85		REV. ELEV. OF INVERTS - 12" DI. PIPE
MAY 9, 1985		ELECTRICAL AND MECHANICAL REV.

ARVIDA CORPORATION
HARBOURSIDE DRIVE and FAIR OAKS LANE
SARASOTA, FLORIDA
LONGBOAT KEY
LIFT STATION DETAILS FOR 7-F & 8-F