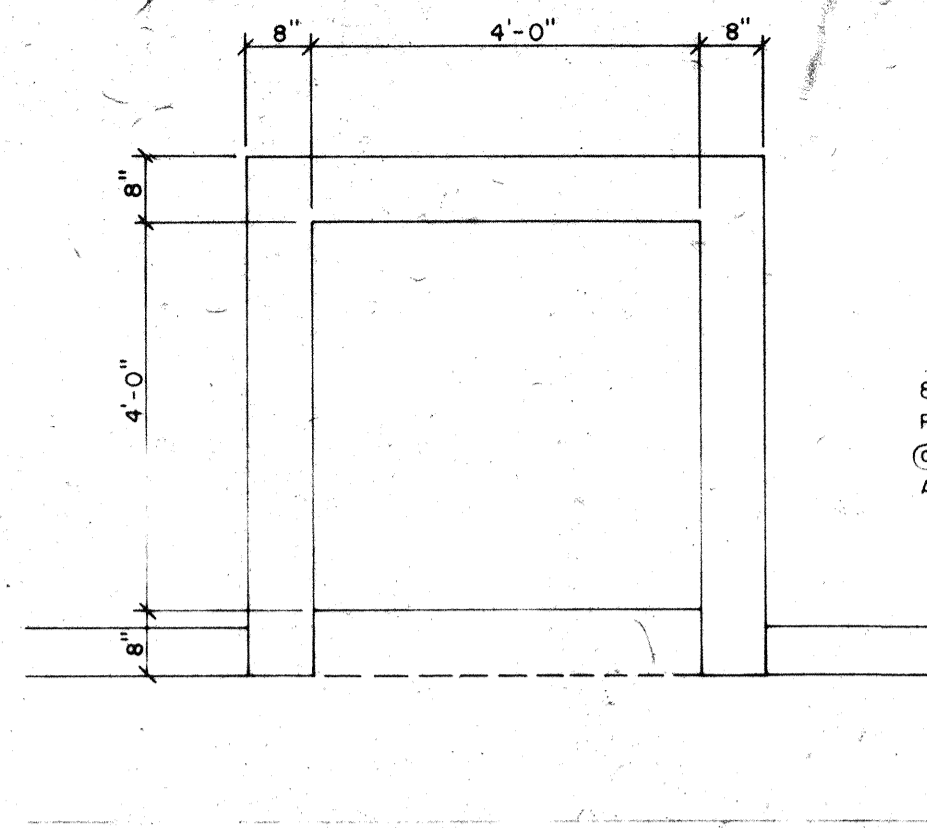
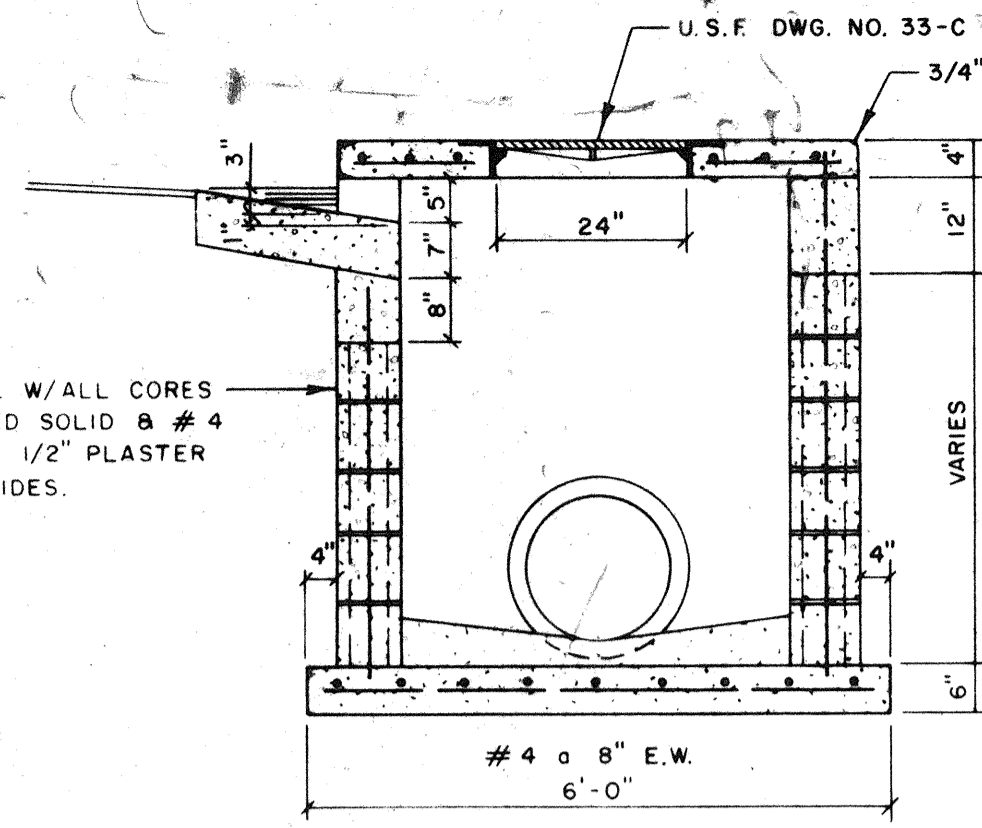


PLAN - COVER

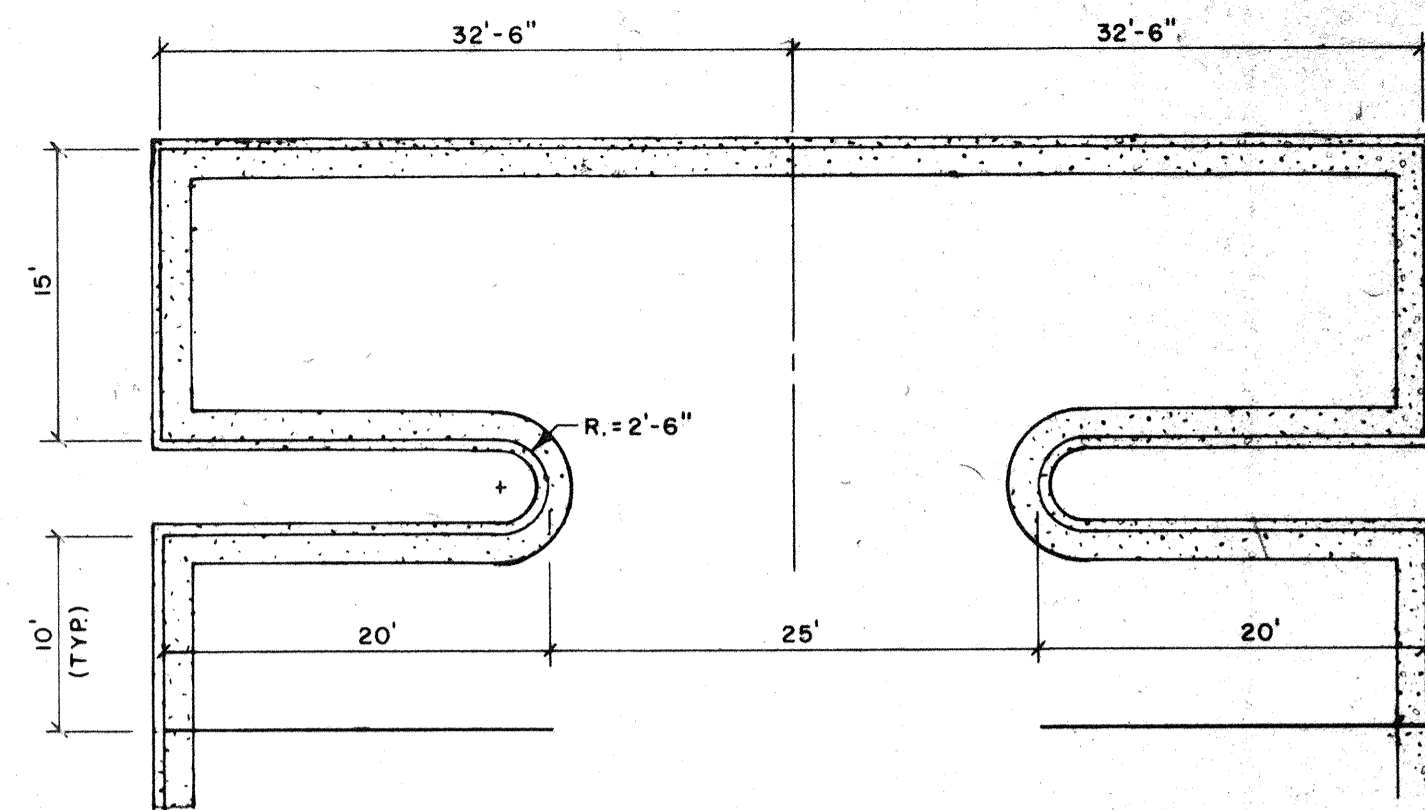


PLAN - COVER REMOVED
TYPICAL CURB INLET

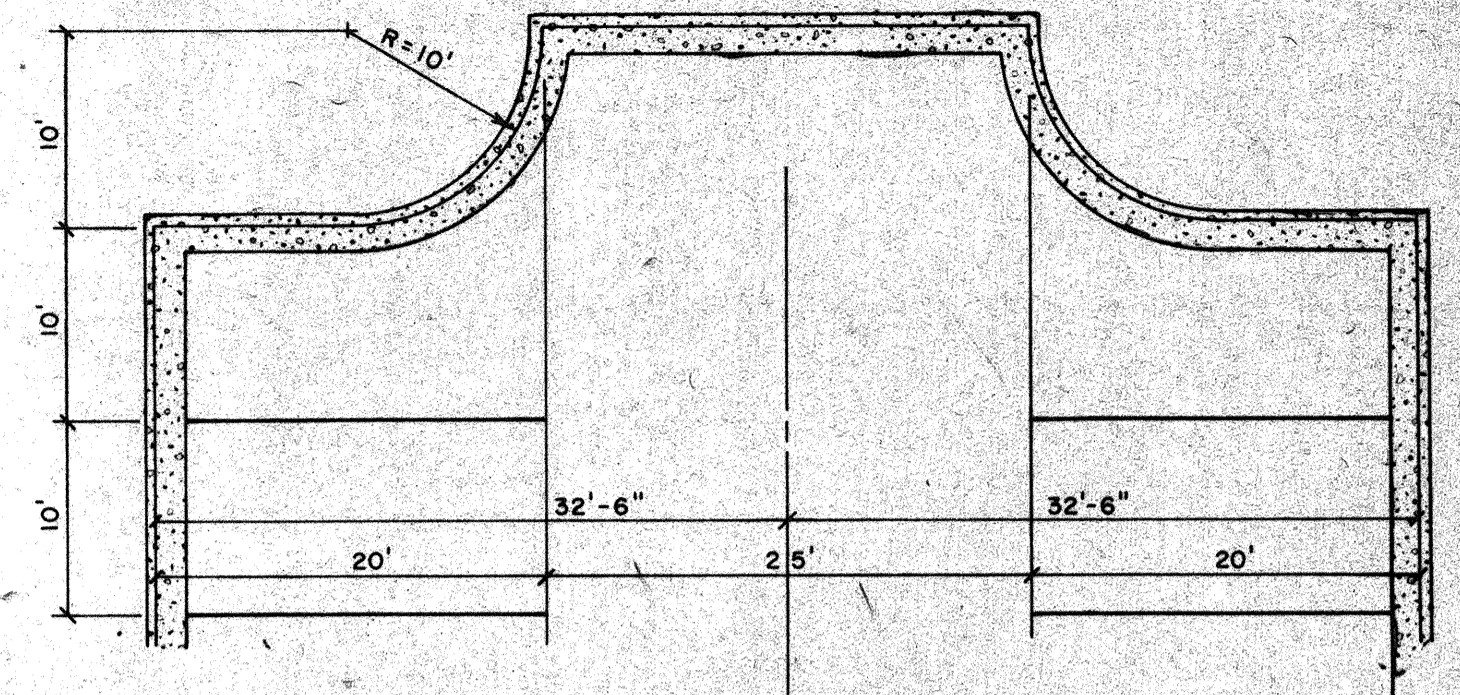
SCALE: 1/2" = 1'-0"
NOTE: FOR LOCATIONS WHERE PIPE SIZES REQUIRE A LARGER BOX, SEE DETAIL (D) DWG. 191-670



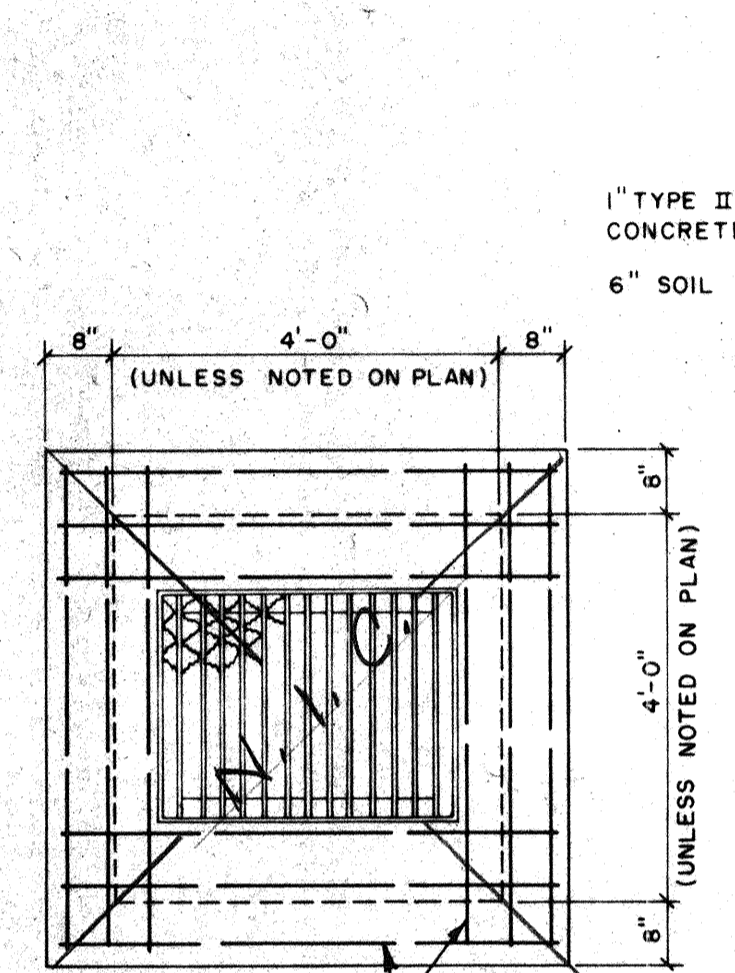
SECTION



TURNAROUND DETAIL "A"
SCALE: 1" = 10'-0"

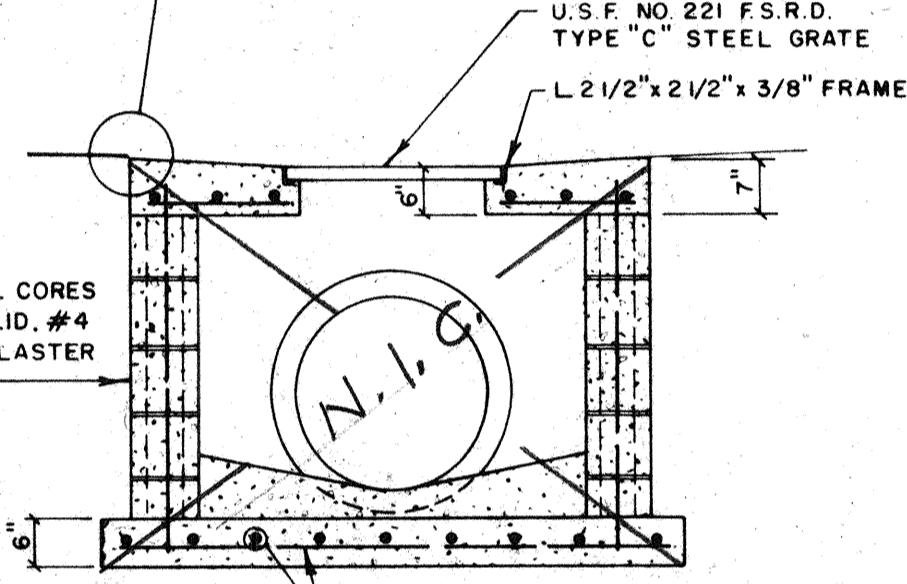
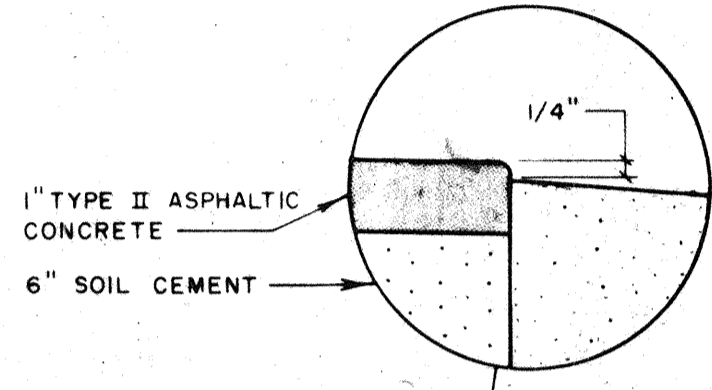


TURNAROUND DETAIL "B"
SCALE: 1" = 10'-0"

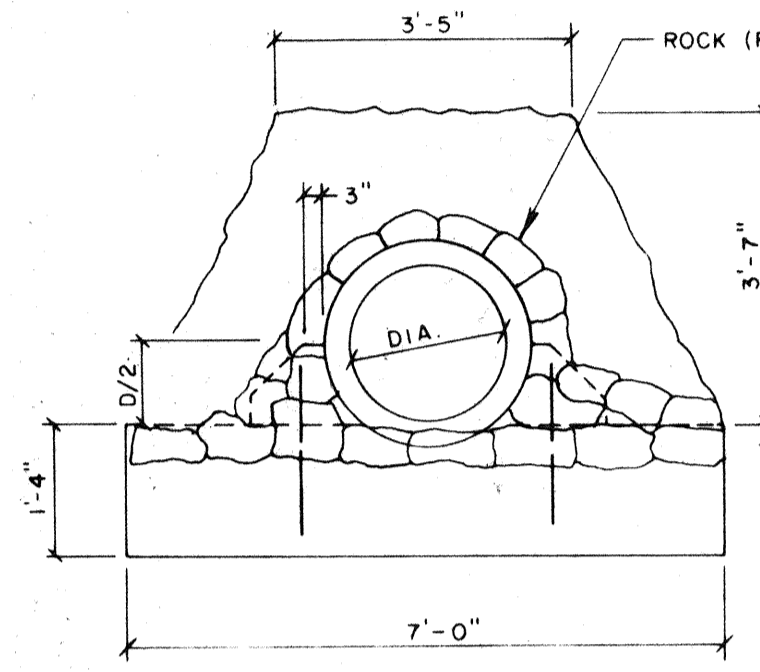


PLAN

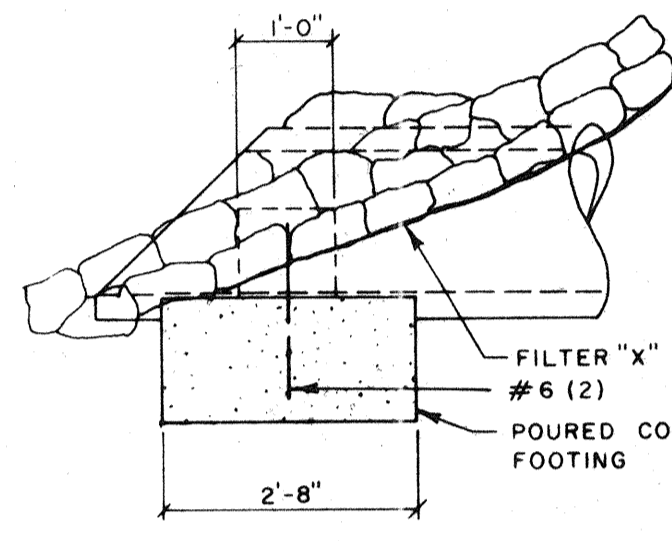
TYPICAL DROP INLET
SCALE: 1/2" = 1'-0"



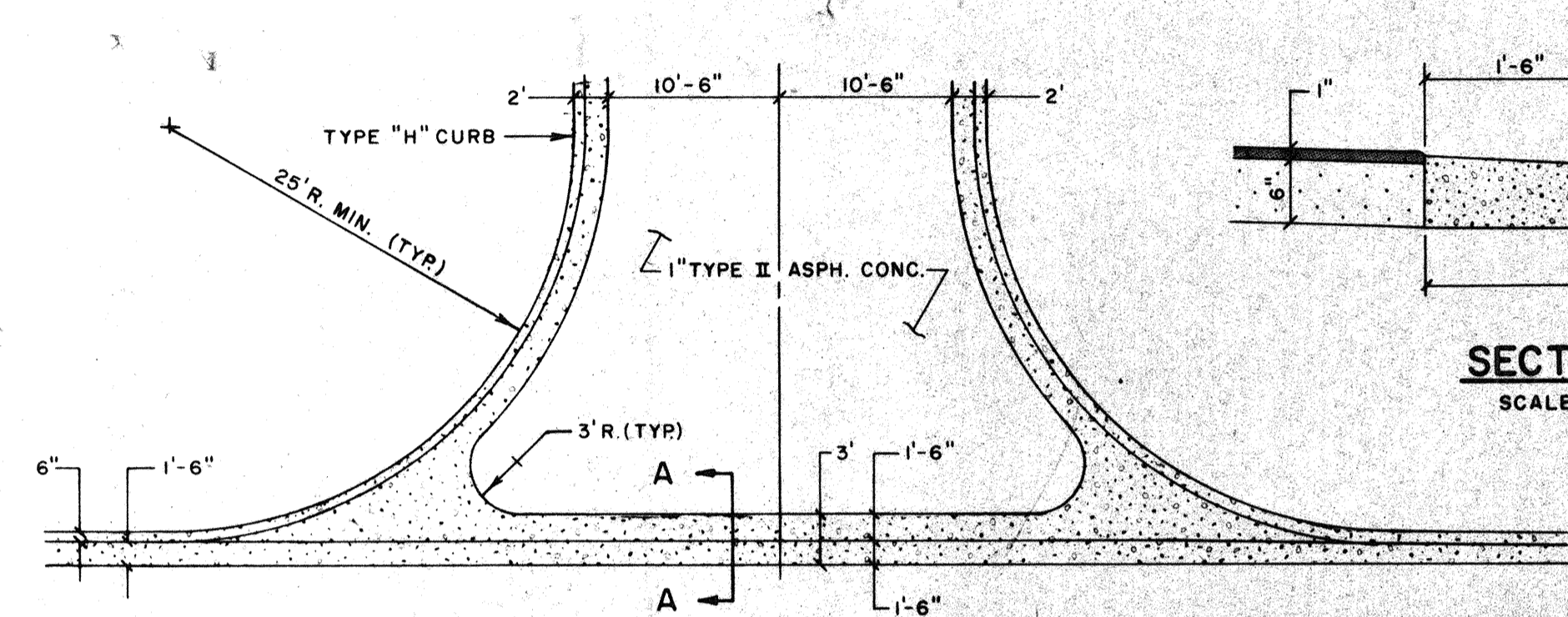
SECTION



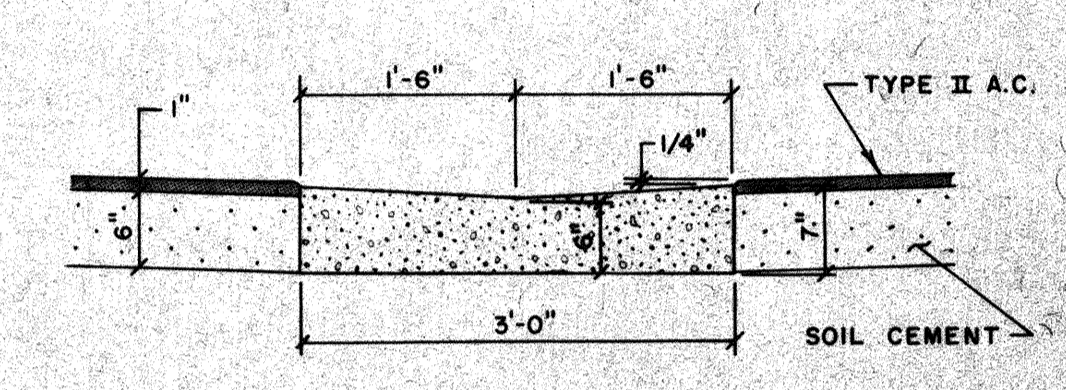
PLAN
TYPICAL ENDWALL
SCALE: 1/2" = 1'-0"



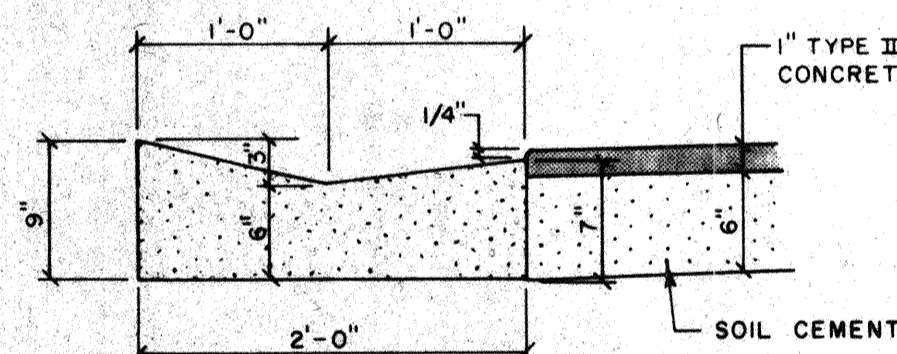
SECTION



VALLEY GUTTER DETAIL
SCALE: 1" = 10'-0"

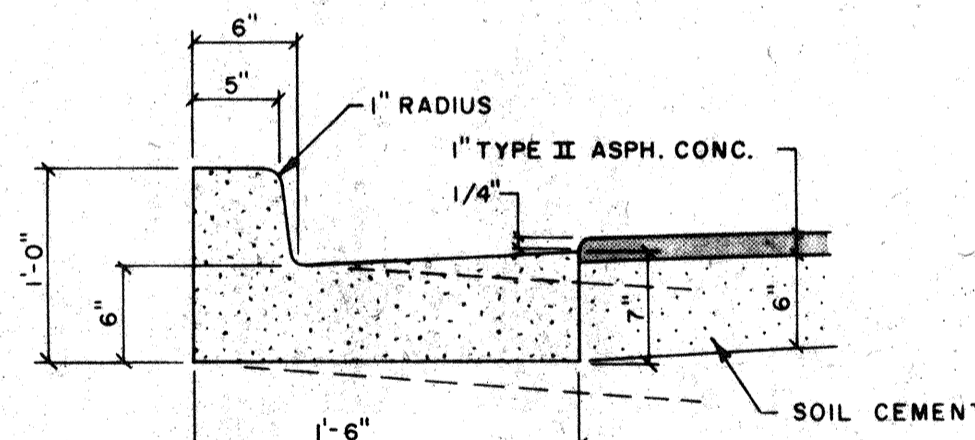


SECTION A-A
SCALE: 3/4" = 1'-0"

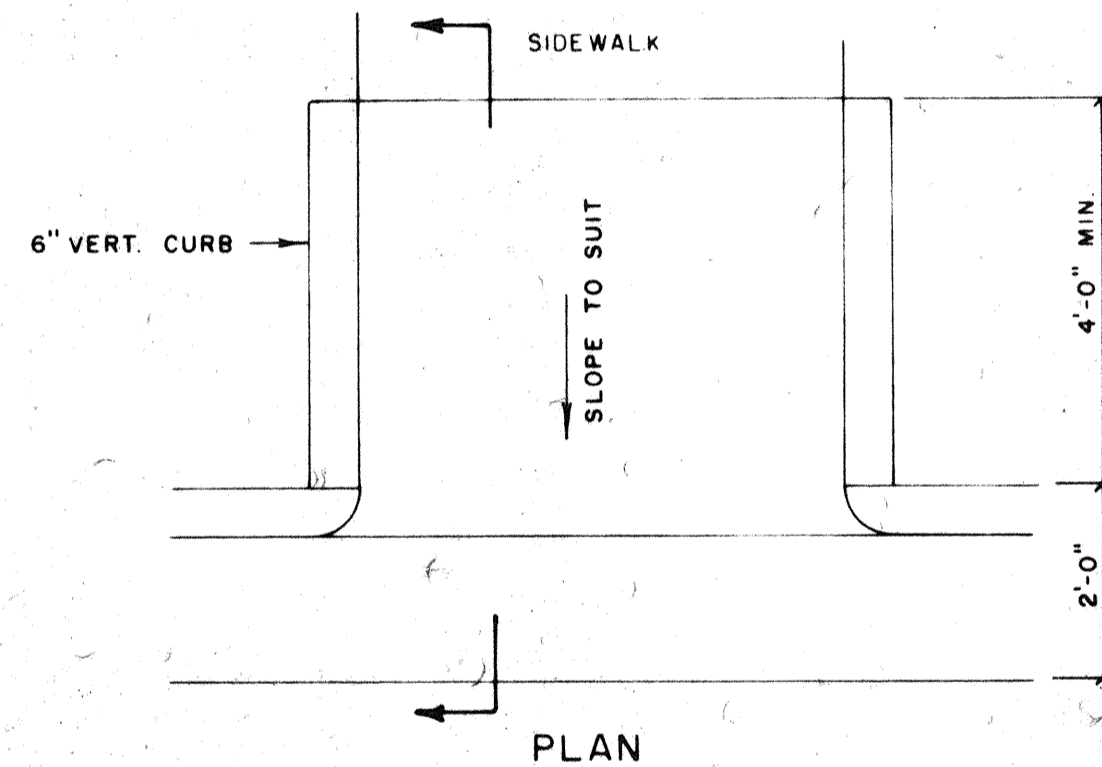


**("MIAMI CURB")
TYPE "K" CURB**
SCALE: 1" = 1'-0"

CURBS POURED WITH CONTINUOUS PAVING MACHINE SHALL HAVE JOINTS SAW CUT EVERY 10' FOLLOWING COMPLETION OF POUR. CONSTRUCTION JOINTS SHALL BE 10' O.C. AND 1/2" PREMOLDED EXP. JOINTS AT 40' O.C.

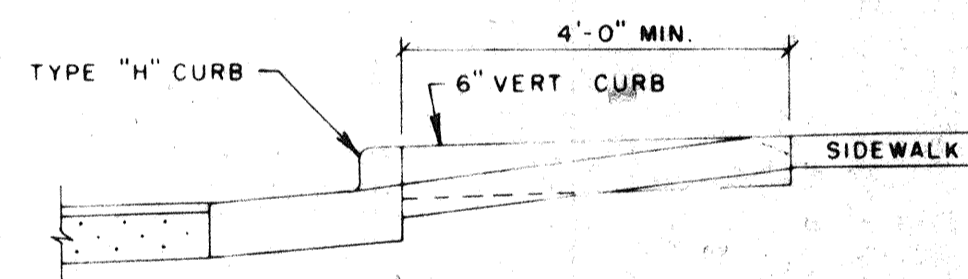


TYPE "H" CURB
SCALE: 1" = 1'-0"

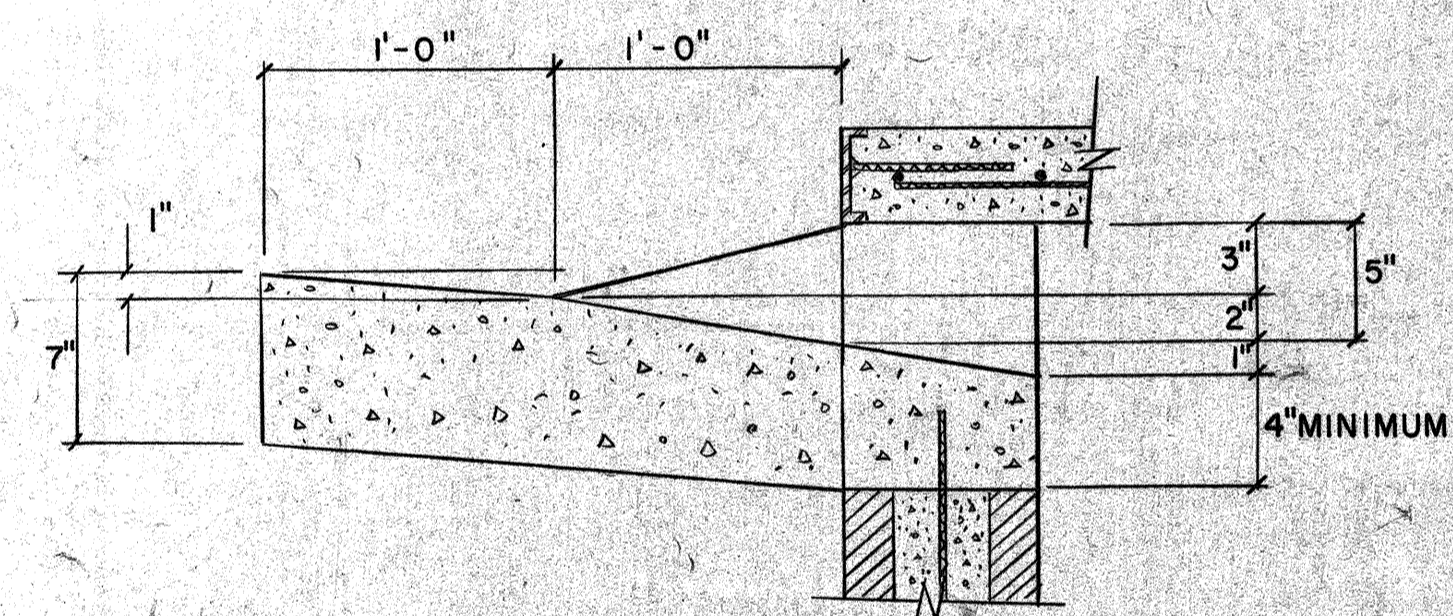


PLAN

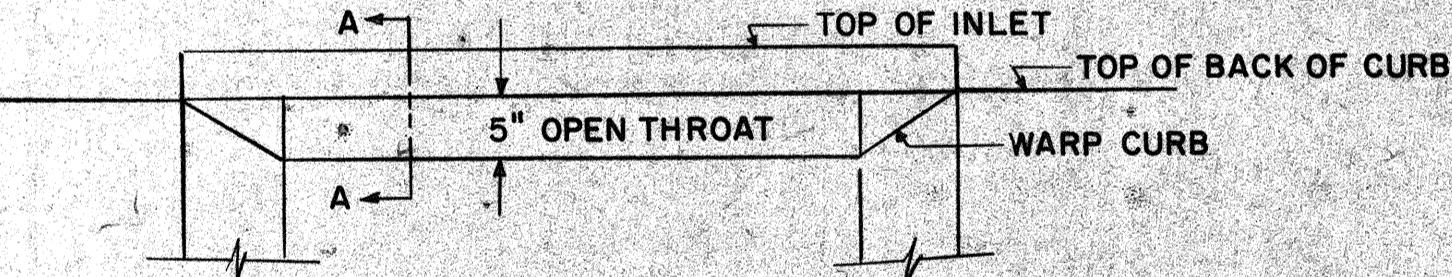
BICYCLE RAMP DETAIL
SCALE: 1/2" = 1'-0"



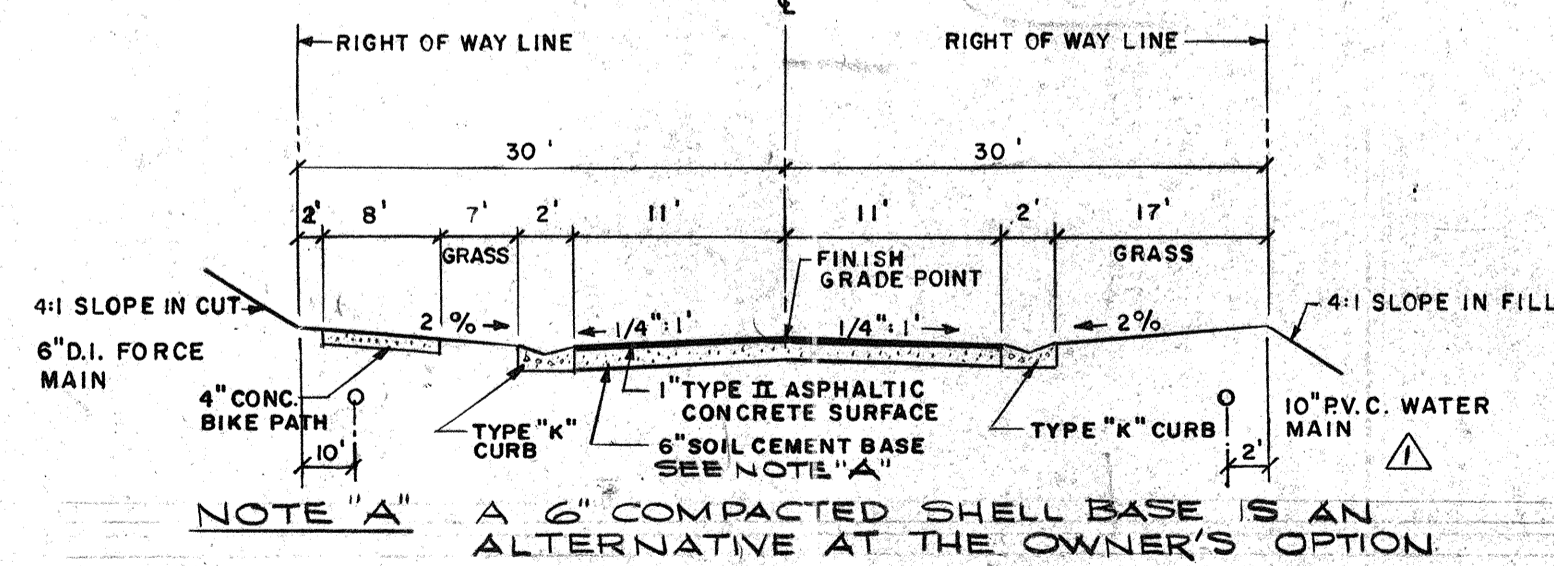
SECTION



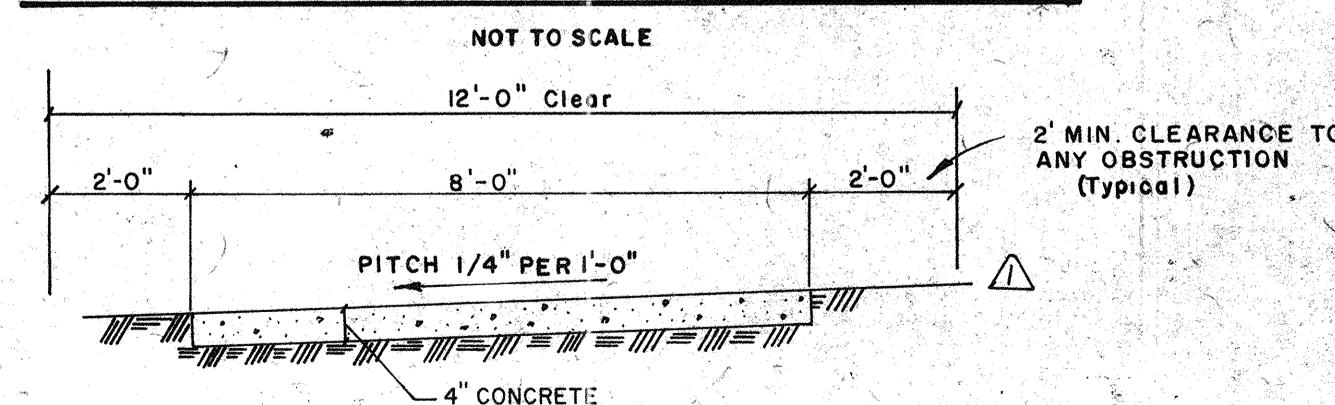
SECTION A-A
SCALE: 1/2" = 1'-0"



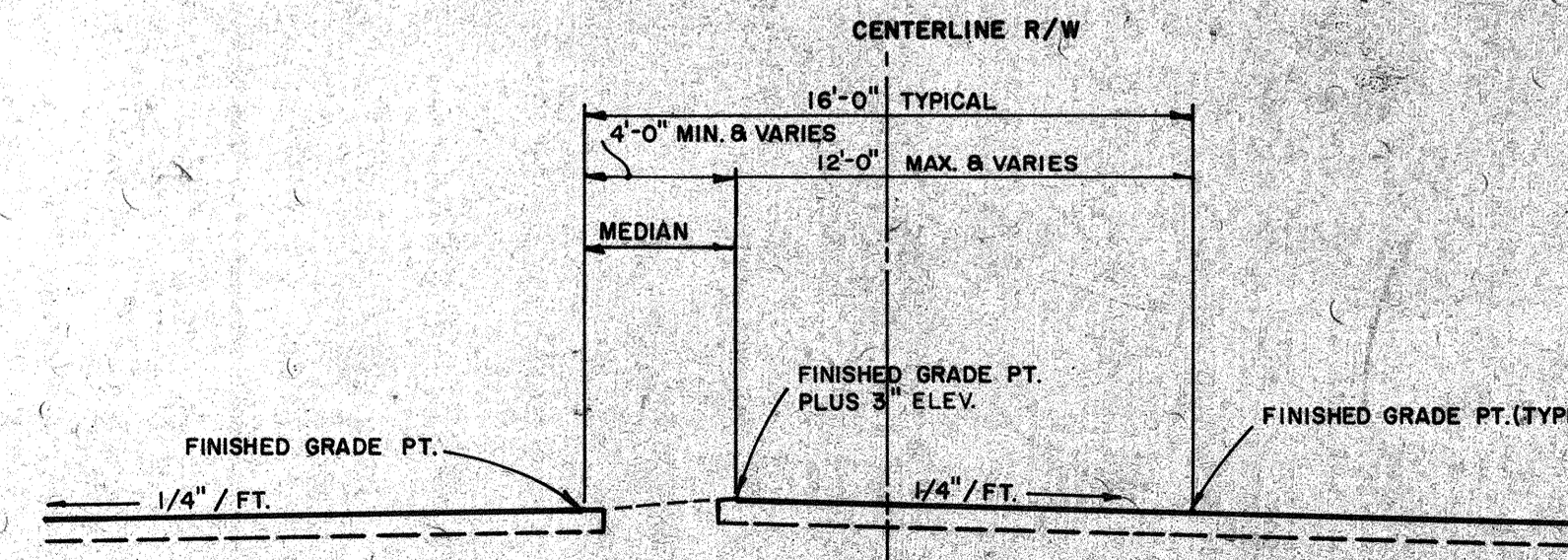
DETAIL OF CURB INLET FOR TYPE "K" CURB
SCALE: AS SHOWN
NOTE: ALL OTHER DETAILS ARE THE SAME AS FOR TYPICAL CURB INLET ON THIS SHEET.



TYPICAL SECTION FAIR OAKS LANE



TYPICAL SECTION OF BIKE PATH (ALONG FAIR OAKS LANE)
NOT TO SCALE



**TYPICAL SECTION AT
LEFT TURN LANE**
NO SCALE

NOTE: SEE TYPICAL SECTION HARBOURSIDE DRIVE FOR ITEMS OF CONSTRUCTION.

BAY ISLES UNIT NO. 6
 ARVIDA CORPORATION
 FAIR OAKS LANE EXTENSION
 PAVING & DRAINAGE DETAILS
 LONGBOAT KEY
 DWG. NO. 191-32A
 11

DATE	4/9/95	DESIGN	F.A.B.	CHECK	F.V.	APPROVED	BY	DATE
REVISION	5/14/85	AS SHOWN	F.A.B.	REVISED	F.V.	BY	DATE	

BENNETT & BISHOP
 CONSULTING ENGINEERS & SURVEYORS
 SARASOTA FLORIDA
 APPROVED BY: *William J. Bishop*