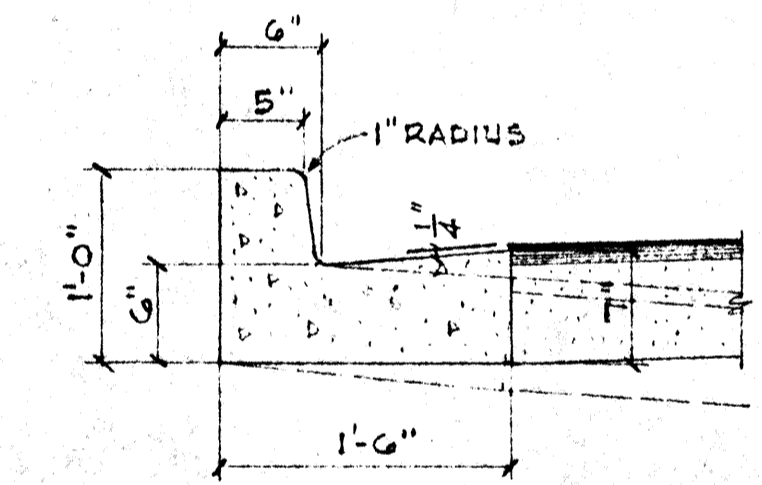
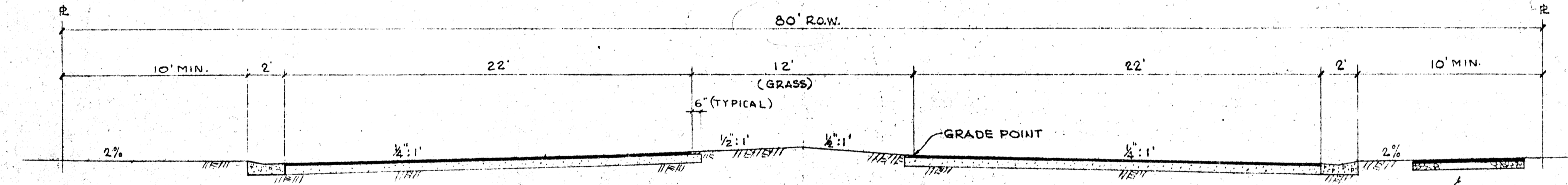
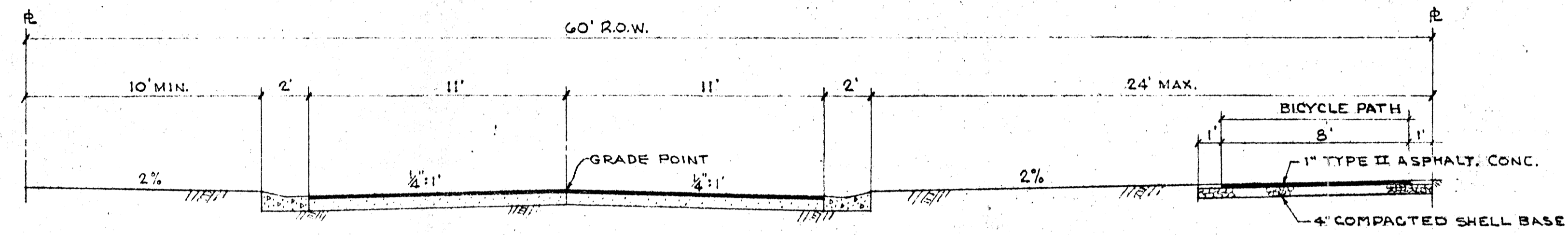
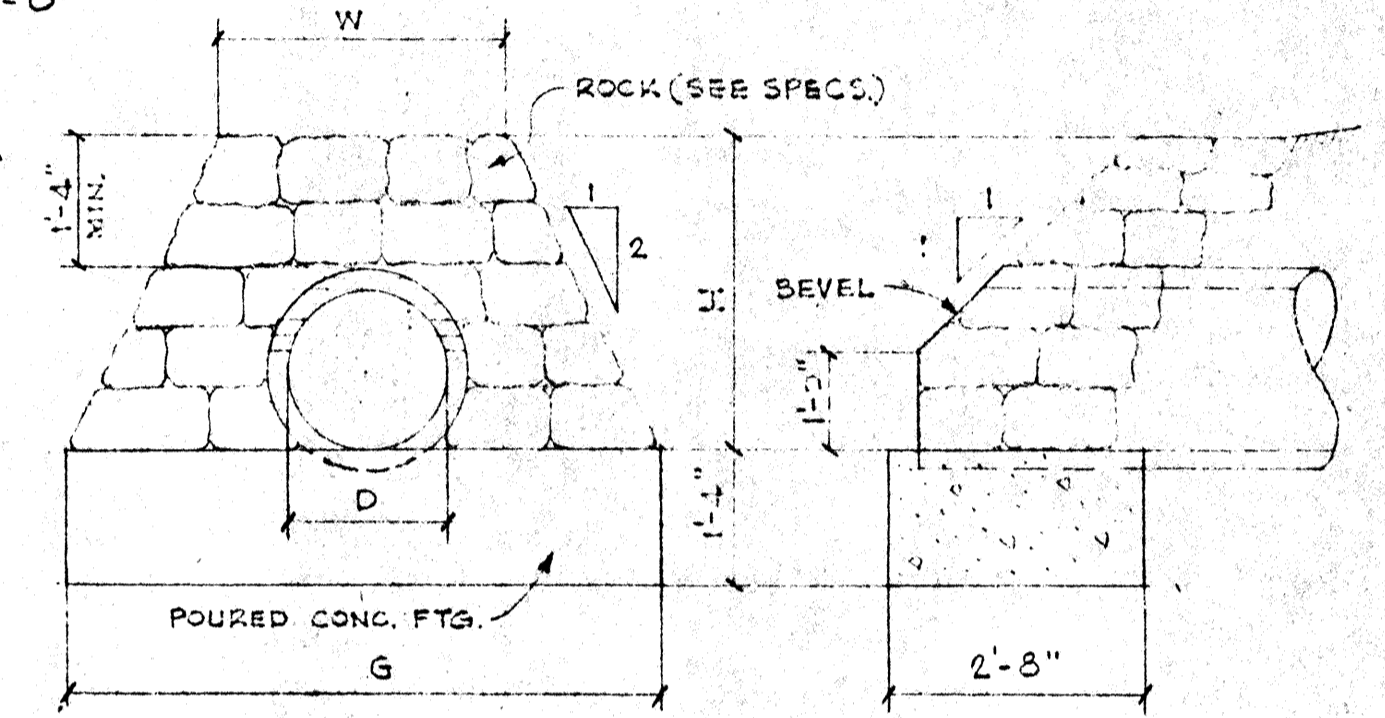
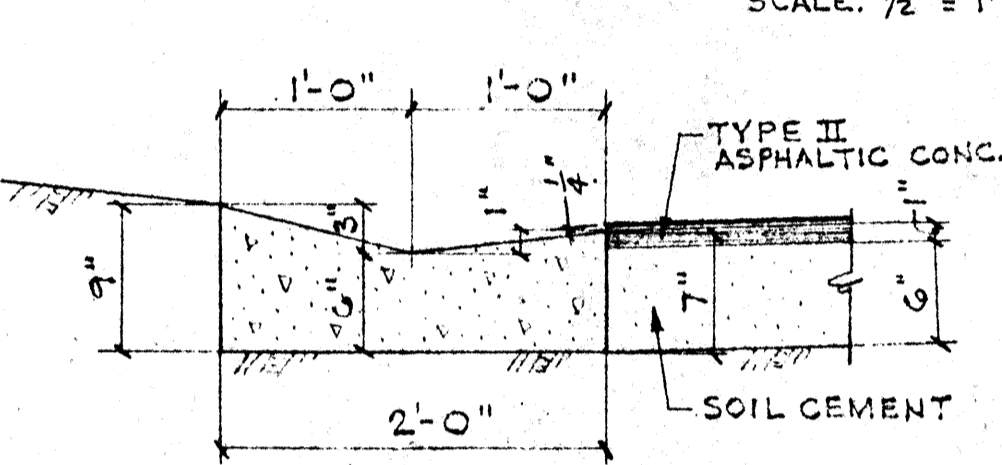


PLAN-COVER

PLAN-COVER REMOVED

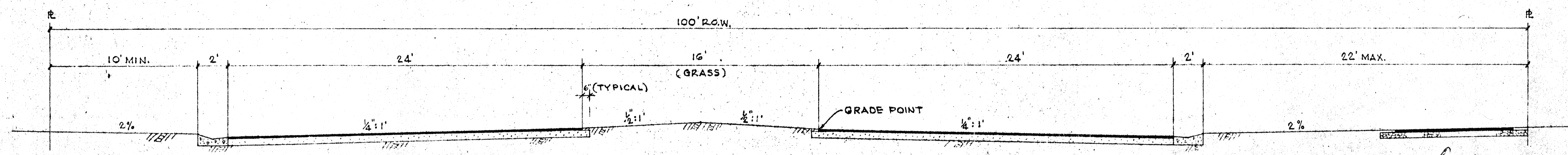
SECTION

TYPICAL CURB INLET STANDARD



DIMENSIONS

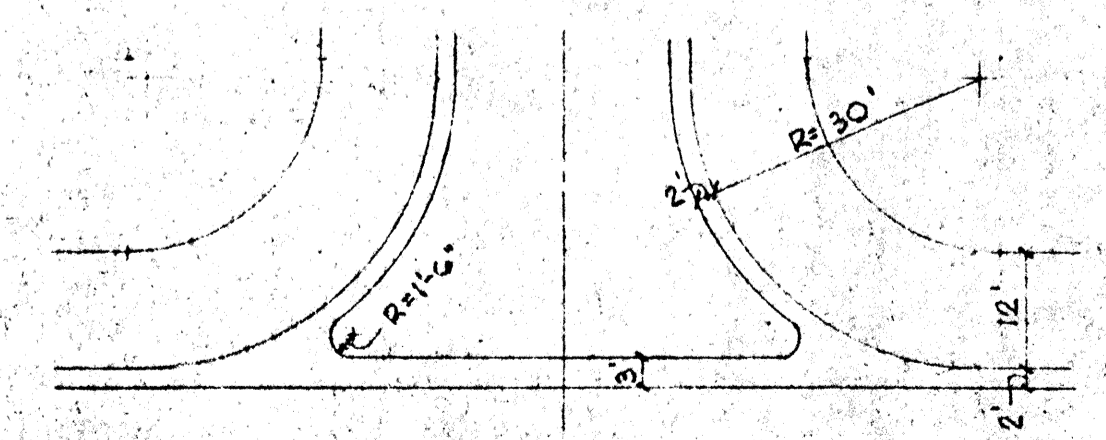
| D | G | W | H |
|------------------|--------|--------|--------|
| 18" OR 14" x 23" | 6'-0" | 2'-11" | 3'-1" |
| 21" | 6'-0" | 3'-2" | 3'-4" |
| 24" OR 19" x 30" | 7'-0" | 3'-5" | 3'-7" |
| 27" | 8'-0" | 4'-1" | 3'-11" |
| 30" OR 24" x 38" | 9'-0" | 4'-10" | 4'-2" |
| 33" OR 27" x 42" | 10'-0" | 5'-7" | 4'-5" |
| 36" OR 29" x 45" | 11'-0" | 6'-3" | 4'-9" |
| 42" OR 32" x 53" | 12'-0" | 7'-2" | 5'-3" |
| 48" OR 38" x 60" | 14'-0" | 8'-2" | 5'-10" |
| 54" OR 43" x 66" | 16'-0" | 9'-5" | 6'-4" |
| 60" OR 48" x 72" | 17'-0" | 10'-1" | 6'-11" |



TYPICAL ROAD SECTIONS

SCALE: 1/4" = 1'-0"

NOTE: 1. VARY ROAD & LOCATION TO PRESERVE QUALITY TREES
2. SEE SASAKI-WALKER PLAN FOR LOCATION OF PEDESTRIAN & BICYCLE PATHS.



BENNETT & BISHOP
CONSULTING ENGINEERS & SURVEYORS
SARASOTA FLORIDA

ARVIDA CORPORATION
BAY ISLES
STREET & DRAINAGE DETAILS

| | | | | | | | | | | |
|----------|----------|-------|----------|----------|----------|-------|-----------------------------|----------|----|------|
| DATE | 11/17/75 | SCALE | AS NOTED | DESIGN | GLB | CHECK | GLB | APPROVED | BY | DATE |
| DESIGNED | GLB | DRAWN | GLB | REVISION | NO. | DATE | DESCRIPTION | | | |
| | | | | 1 | 11/24/75 | | REVISED BICYCLE PATH DETAIL | | | |

DWG. No. 191-078