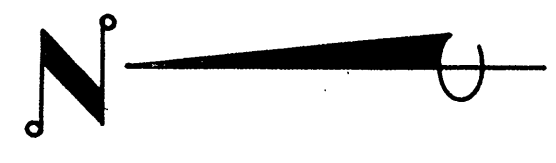
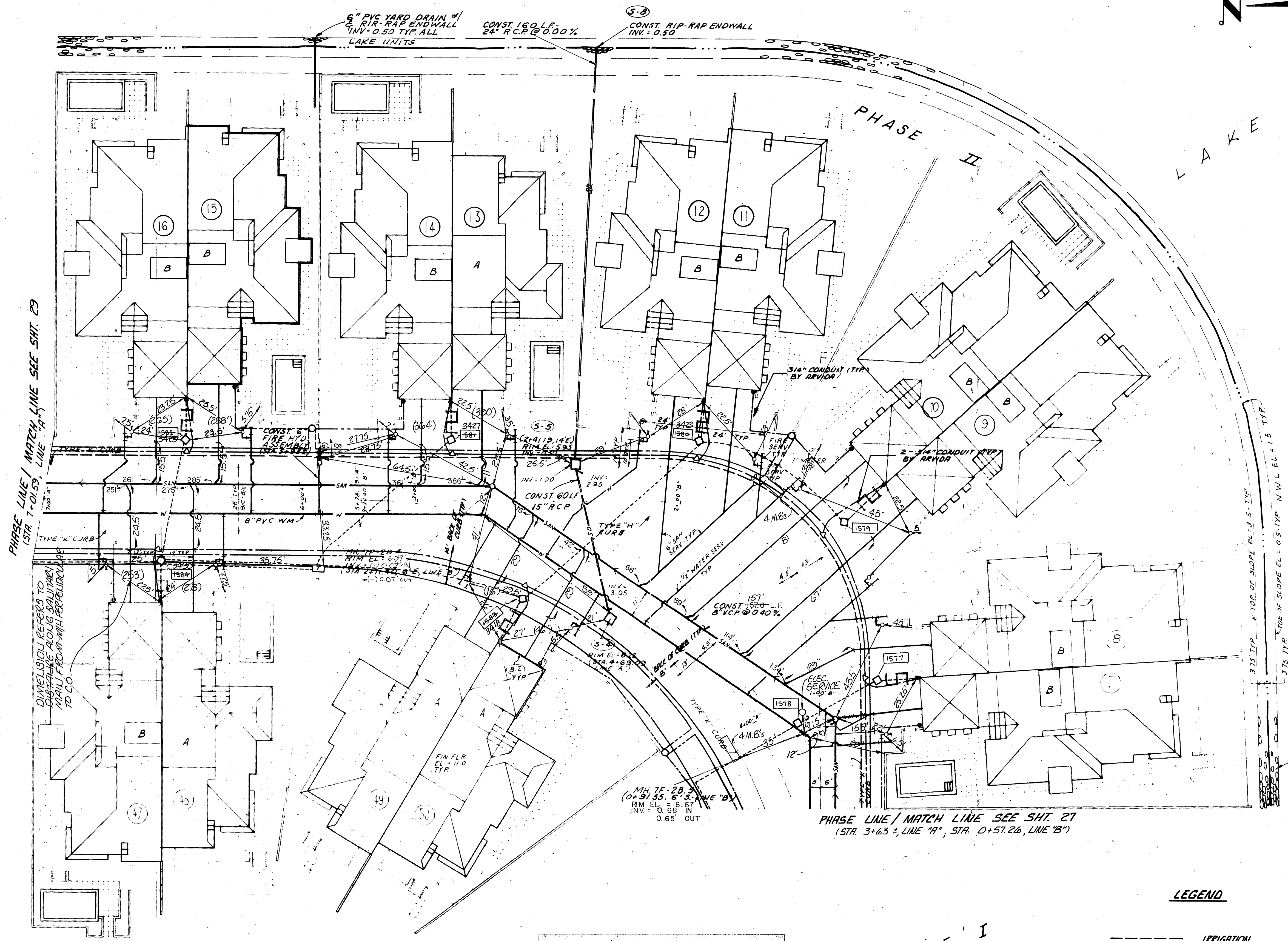


PHASE III



PHASE LINE / MATCH LINE SEE SHIT. 23
(STA. 7+01.53, LINE "A", STA. 7+01.53, LINE "B")

PHASE LINE / MATCH LINE SEE SHIT. 27
(STA. 3+63 ±, LINE "A", STA. 0+51.26, LINE "B")

DIMENSIONS REFER TO CENTERLINE OF DRIVEWAYS ALONG DRIVEWAYS AND TO CO. FROM WITH PERPENDICULAR TO CO.

CONST. RIP-RAP SLOPE (SEE SHIT No. ARVD-0280, 6) TYP.

FOR DETAILS OF YARD DRAINS SEE SHIT. 24

1577	34,416,59514	36,957,11385
1578	34,512,60443	36,948,28503
1579	34,470,06540	37,015,28175
1580	34,512,44426	37,057,31029
1581	34,415,00025	37,080,29769
1582	34,713,34544	37,103,30255
1583	34,513,68382	37,014,69432
1584	34,713,18582	37,062,75933

PHASE I

NOTES:

- ARVIDA WILL PLACE ALL CONDUIT FOR CABLE TV DISTRIBUTION LINES AND POWER MAINS AND SECONDARY LINES. LINE INSTALLATION TO BE PERFORMED BY OTHERS.
- ALL CONDUIT FOR HOUSE DROPS TO BE PLACED BY ARVIDA. LINE INSTALLATION BY OTHERS.
- ARVIDA WILL PLACE 4" SLEEVES UNDER DRIVEWAYS FOR TELEPHONE CABLE. INSTALLATION TO BE PERFORMED BY OTHERS.

LEGEND

- IRRIGATION
- CABLE TV
- POWER PRIMARY
- POWER SECONDARY
- TELEPHONE
- CABLE TV FULL BOX
- △ HOUSE CONNECTION
- TELEPHONE SOD BOXES
- POWER HAND HOLDS
- TRANSFORMER

BAY ISLES - DADCEI, ME "H"
TOWN OF LONGBOAT KEY, FLORIDA
 WINDING OAKS CORPORATION
 ARVIDA CORPORATION
 ENGINEER BISHOP & ASSOCIATES - 78 SARASOTA CENTER BLVD. SARASOTA, FLORIDA 34240 (813) 378-6362
 T.L.K. FILE NO.

DESIGNED BY	PROJECT ENGINEER
DATE:	2-7-90
CHECKED BY	D.T.J.
PROJECT NO.	ARVD-0230
SCALE:	1"=20'
DRAWN BY	RS.N
REVISION	
BY	
LTR. DATE	
SHEET NUMBER	29 AB
REVISION	