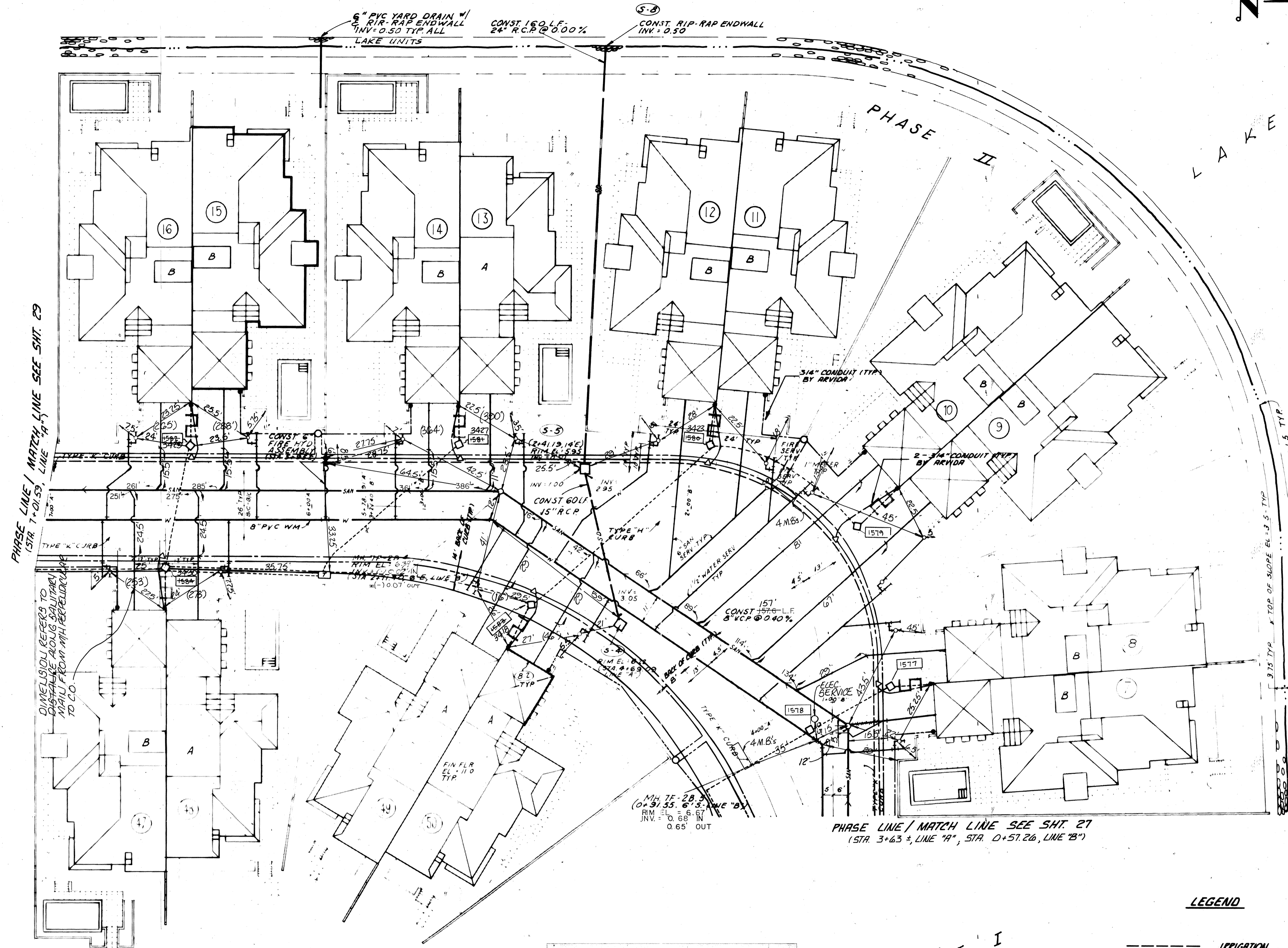


PHASE III



PHASE LINE / MATCH LINE SEE SHIT. 29
(STA. 1+01.59, LINE "A")

PHASE LINE / MATCH LINE SEE SHIT. 27
(STA. 3+63.2, LINE "A", STA. 0+57.26, LINE "B")

FOR DETAILS OF YARD DRAINS
SEE SHIT. 24

1577	34.416.59514	36.957.11385
1578	34.502.60443	36.948.26503
1579	34.470.06560	37.015.26175
1580	34.512.46626	37.057.31029
1581	34.615.00025	37.080.25769
1582	34.710.24544	37.103.30255
1583	34.519.68382	37.014.69432
1584	34.713.18582	37.062.75983

PHASE I

- NOTES:
- ARVIDA WILL PLACE ALL CONDUIT FOR CABLE TV DISTRIBUTION LINES AND POWER MAINS AND SECONDARY LINES. LINE INSTALLATION TO BE PERFORMED BY OTHERS.
 - ALL CONDUIT FOR HOUSE DROPS TO BE PLACED BY ARVIDA. LINE INSTALLATION BY OTHERS.
 - ARVIDA WILL PLACE 4" SLEEVES UNDER DRIVEWAYS FOR TELEPHONE CABLE INSTALLATION TO BE PERFORMED BY OTHERS.

LEGEND

---	IRRIGATION
---	CABLE TV
---	POWER PRIMARY
---	POWER SECONDARY
---	TELEPHONE
○	CABLE TV PULL BOX
●	HOUSE CONNECTION
△	TELEPHONE SOD BOXES
□	POWER HAND HOLDS
⊠	TRANSFORMER

BAY ISLES - BARCEL ME 11"
TOWN OF LONGBOAT KEY, FLORIDA
 WINDING OAKS
 ARVIDA CORPORATION
BISHOP & ASSOCIATES - 78 SARASOTA CENTER BLVD. SARASOTA, FLORIDA 34240 (813) 378-6362
 ENGINEER & LOCATION
 T.L.K. FILE NO.

DESIGNED BY	PROJECT ENGINEER
DATE:	2-7-90
CHECKED BY	D.T.J.
PROJECT NO.	ARVD-0230
SCALE:	1"=20'
DRAWN BY	PS.N
REVISION	
LTR. DATE	
BY	
SHEET NUMBER	29 AB
REVISION	