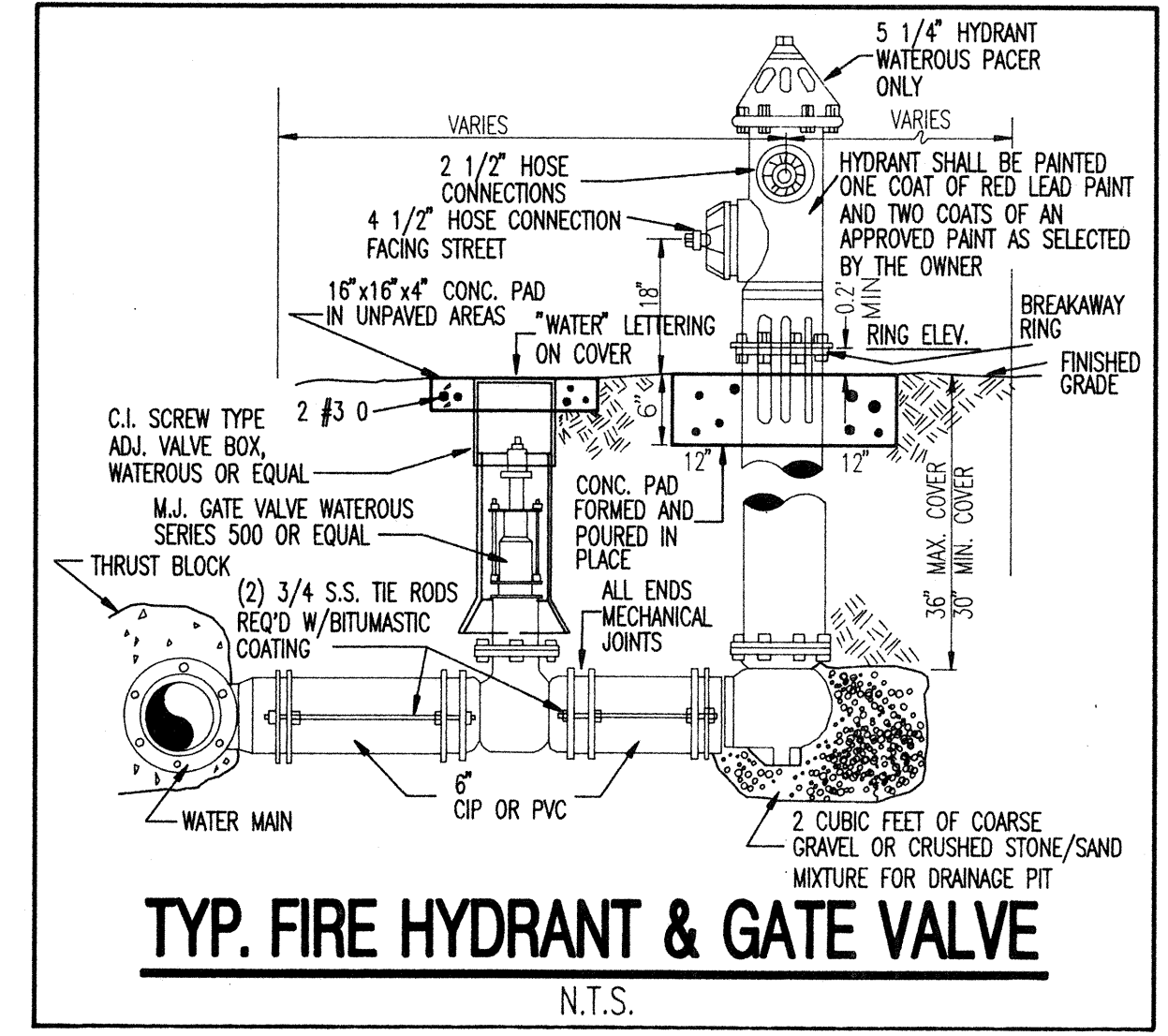


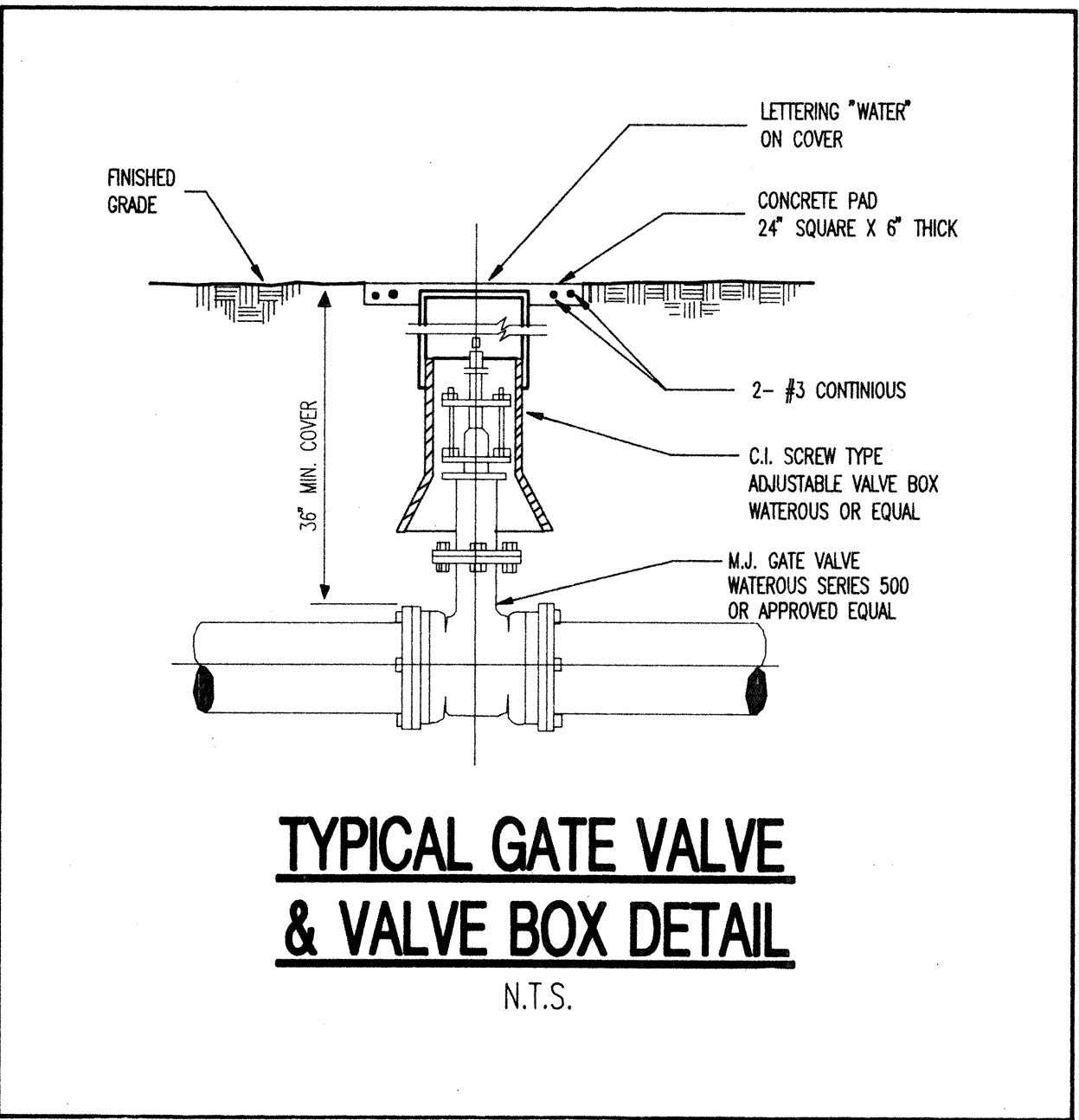
| PIPE SIZE | 2" | 4" | 6" | 8" | 10" | 12" | 14" | 16" |
|-----------|-----|-----|-----|-----|-----|-----|------|------|
| A | 1.0 | 1.0 | 2.0 | 3.0 | 4.5 | 6.5 | 8.5 | 11.0 |
| B | 1.0 | 1.0 | 1.5 | 2.5 | 3.5 | 5.0 | 6.5 | 8.5 |
| C-90 | 1.0 | 1.0 | 2.5 | 4.0 | 6.5 | 9.0 | 12.0 | 15.5 |
| C-45 | 1.0 | 1.0 | 1.5 | 2.5 | 3.5 | 5.0 | 6.5 | 8.5 |
| C-22-1/2 | 1.0 | 1.0 | 1.0 | 1.5 | 2.0 | 2.5 | 3.5 | 4.5 |

- 1) CHART NUMBERS ARE SQUARE FEET BEARING ON UNDISTURBED MATERIAL.
- 2) POUR THRUST BLOCKS AGAINST UNDISTURBED MATERIAL WHERE TRENCH WALL HAS BEEN DISTURBED. EXCAVATE LOOSE MATERIAL AND EXTEND THRUST BLOCK TO UNDISTURBED MATERIAL. NO JOINTS SHALL BE COVERED WITH CONCRETE.
- 3) CONCRETE SHALL BE 2500 P.S.I.
- 4) WHERE THRUST BLOCK IS NOT PRACTICAL DUE TO SOIL CONDITIONS, A HARNESSING DETAIL SHALL BE SUBMITTED TO THE ENGINEER OF RECORD FOR APPROVAL.
- 5) DUCTILE IRON FITTINGS SHALL BE WRAPPED IN BLACK 8 MIL. POLYETHYLENE.
- 6) THRUST BLOCK SIZES ARE FROM SARASOTA COUNTY STANDARD DETAILS.

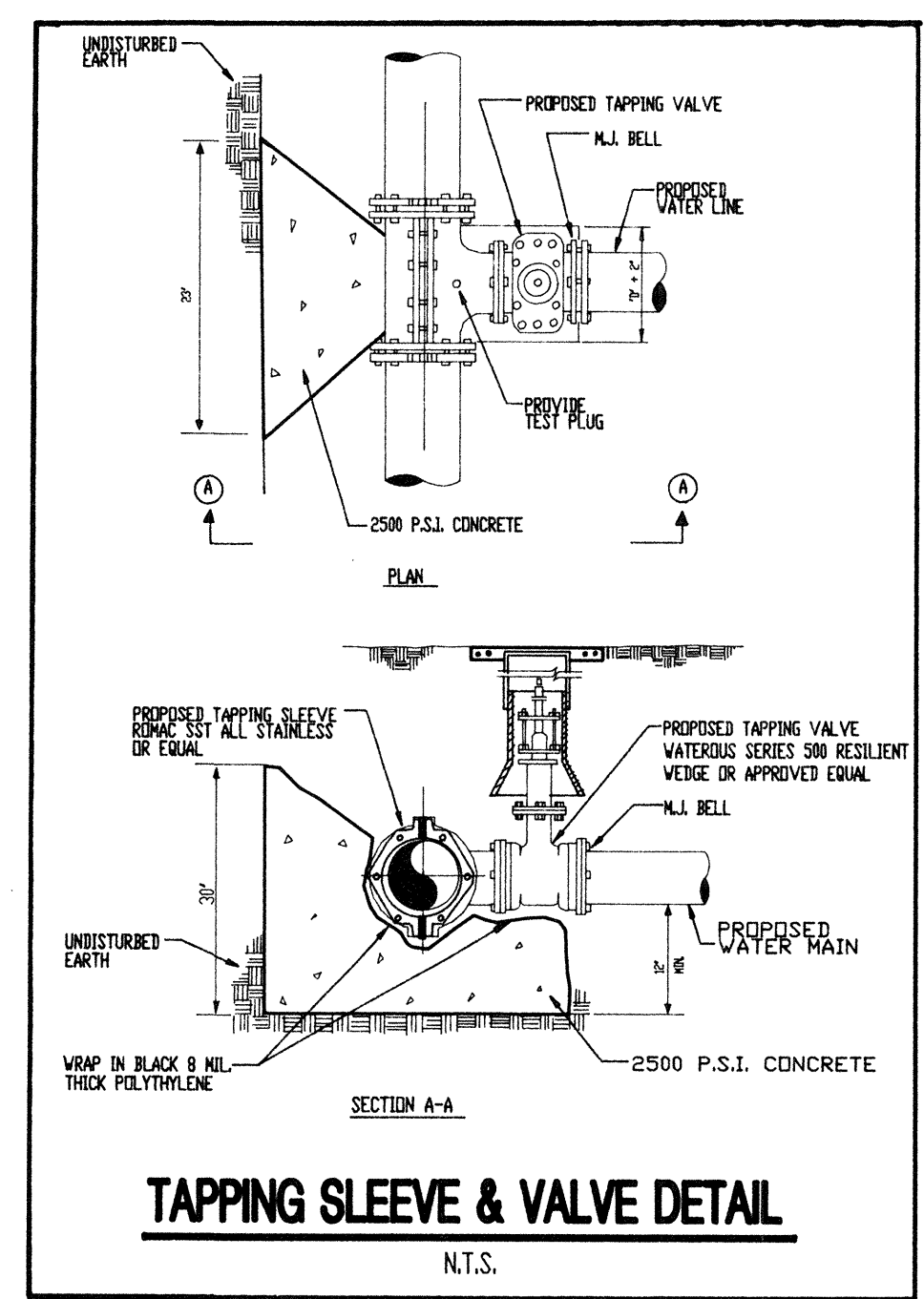
THRUST BLOCKS
N.T.S.



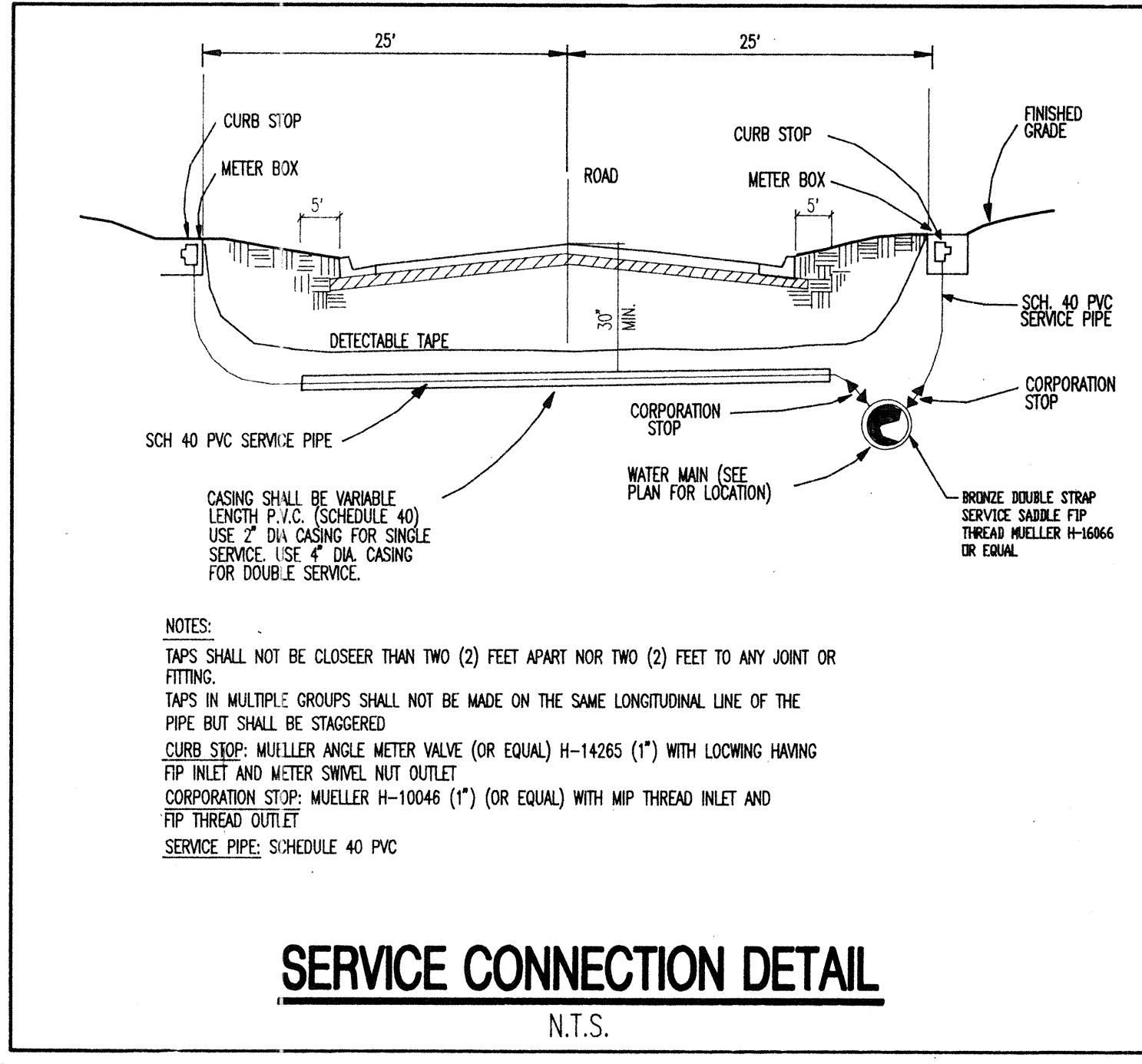
TYP. FIRE HYDRANT & GATE VALVE
N.T.S.



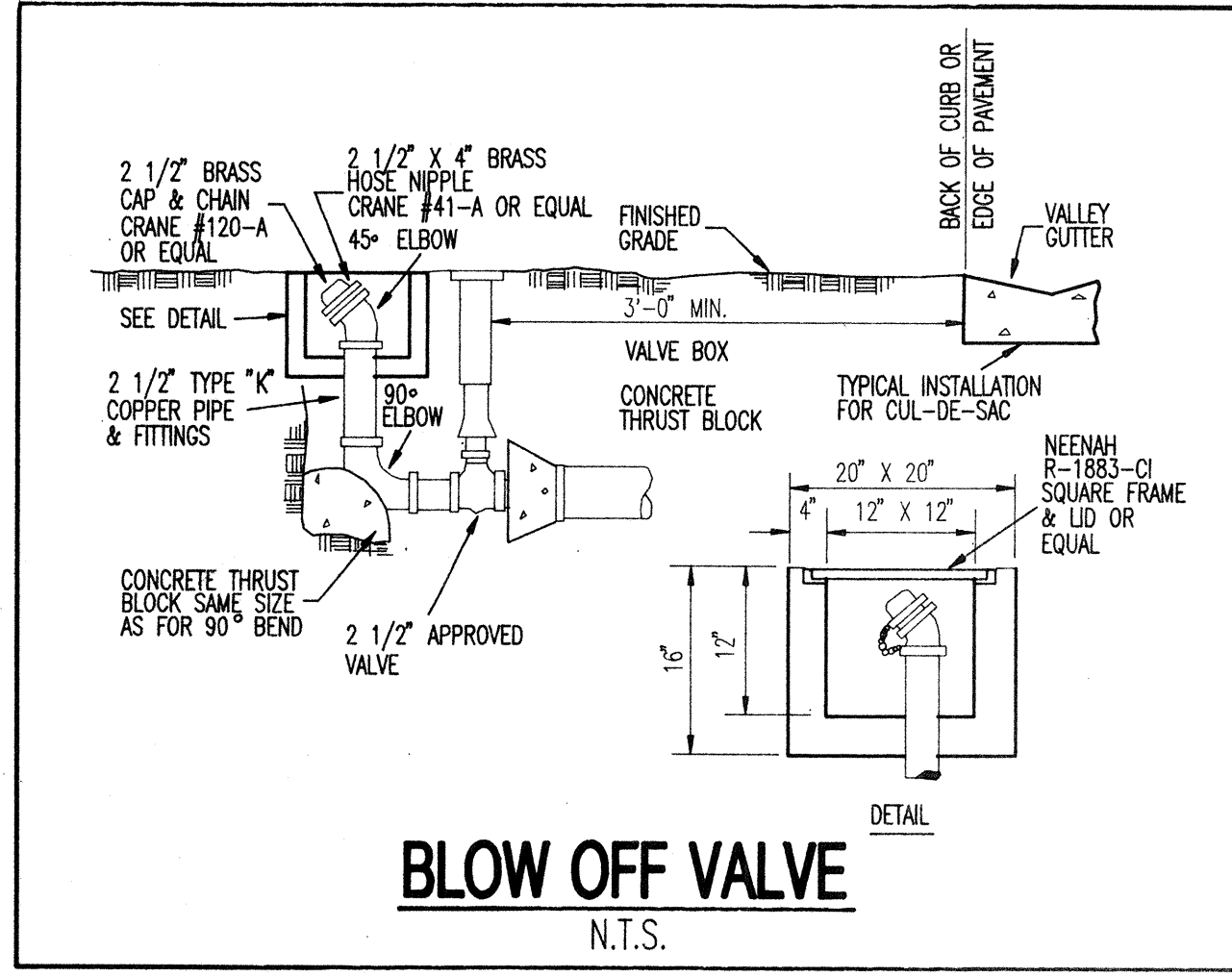
TYPICAL GATE VALVE & VALVE BOX DETAIL
N.T.S.



TAPPING SLEEVE & VALVE DETAIL
N.T.S.



SERVICE CONNECTION DETAIL
N.T.S.



BLOW OFF VALVE
N.T.S.

MINDER & RHODES ENGINEERING CORPORATION
Engineers - Planners - Surveyors

APPROVED: *[Signature]*
P.E. No. 27130
Date: 01/18/92
CAD DWG. SLOGBAND

AAR

3000 CLARK ROAD
SARASOTA, FL 34233
(813) 922-7244

Designed: WBH / Checked: N/A / Scale: N/A / Date: 07/30/92
Drawn: DBH

REVISIONS

| No. | Date | By | Descriptions |
|-----|---------|--|--------------|
| 1 | 10/7/92 | REVISION PER TOWN OF LONGBOAT KEY REVIEW | AJR |

WESTON POINTE LONGBOAT KEY
SARASOTA COUNTY, FLORIDA

WATER DISTRIBUTION SYSTEM DETAILS