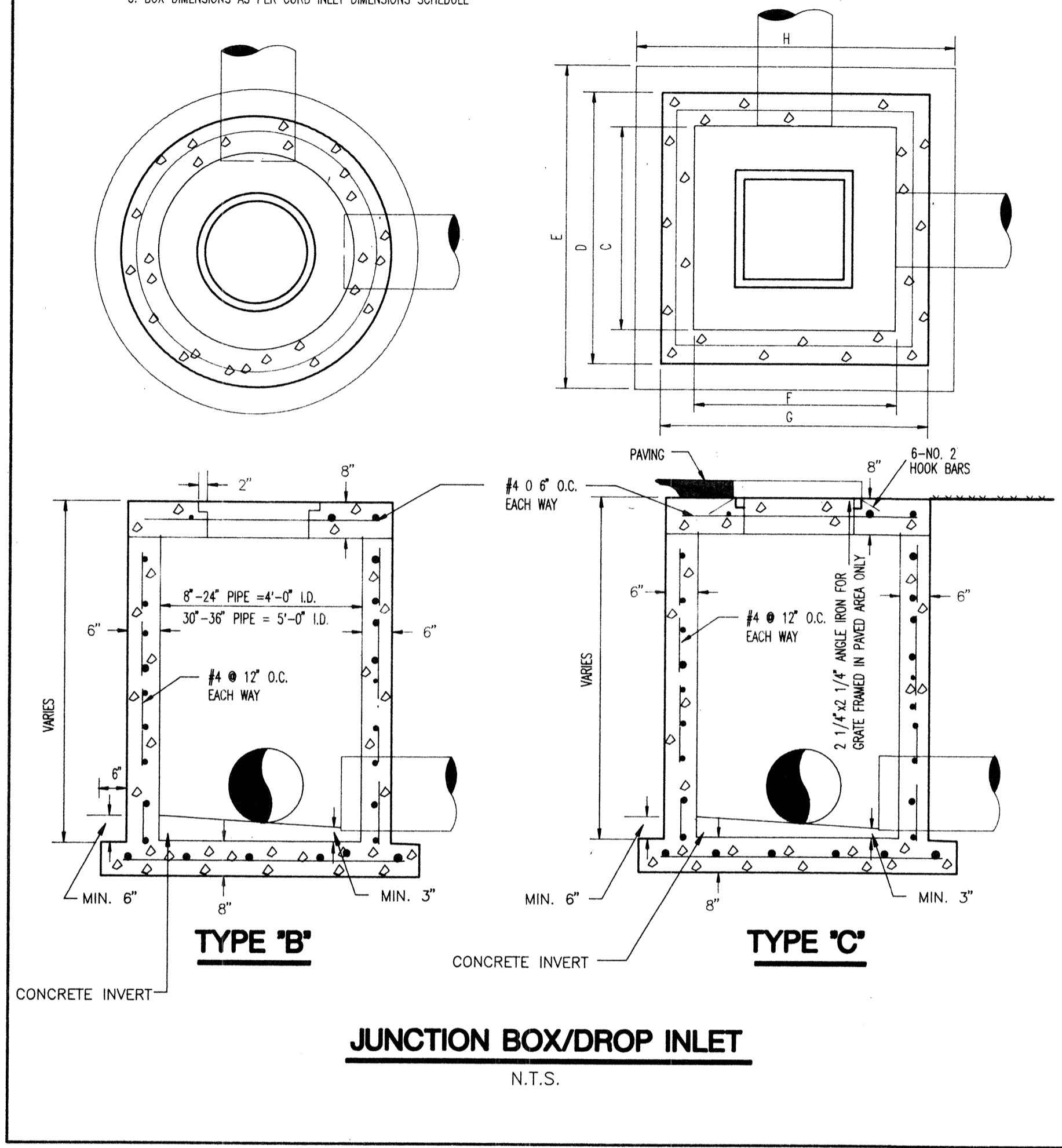


NOTES

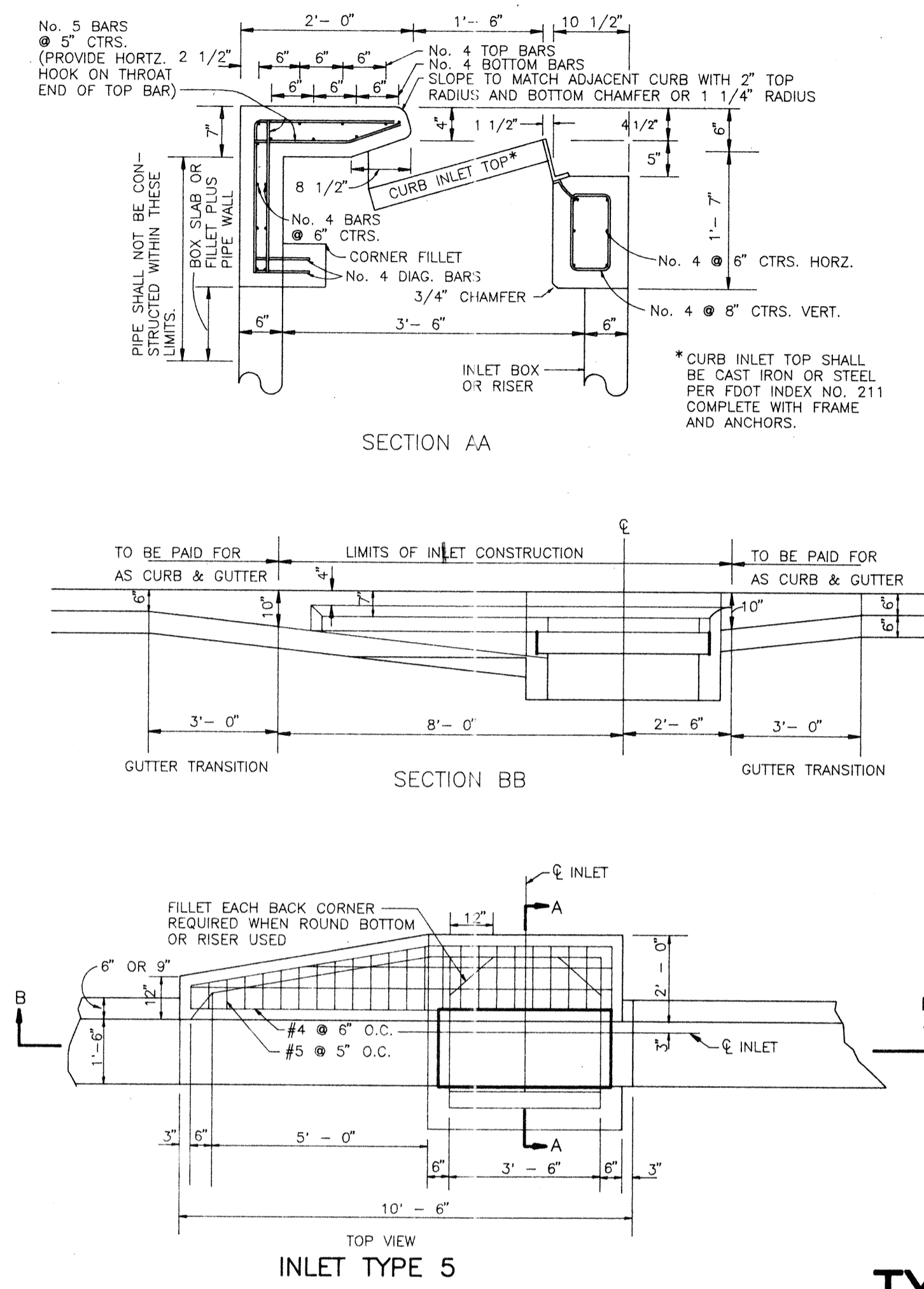
1. JUNCTION BOX FRAME AND LID, TYPE "D", SEE DETAIL.
2. DROP INLET WITH ANGLE FRAME AND FLAT STEEL GRATE, SIMILAR TO F.D.O.T. INDEX 233.
3. BOX DIMENSIONS AS PER CURB INLET DIMENSIONS SCHEDULE.



NOTE:
APPROVED SUB-BASE MATERIALS SHALL BE COMPACTED IN LAYERS MAXIMUM TO 98% DENSITY, A.A.S.H.T.O. T-160.
ASPHALT CONCRETE PAVEMENT JOINTS SHALL BE MECHANICALLY SAWS.
SURFACE TREATED PAVEMENT JOINTS SHALL BE LAPPED AND FEATHERED.
SURFACE MATERIAL WILL BE CONSISTENT WITH THE EXISTING SURFACE.
SUB-BASE MATERIAL SHALL BE APPROVED BY THE COUNTY ENGINEER.

CONCRETE AND FLEXIBLE PAVEMENT REPLACEMENT

N.T.S.

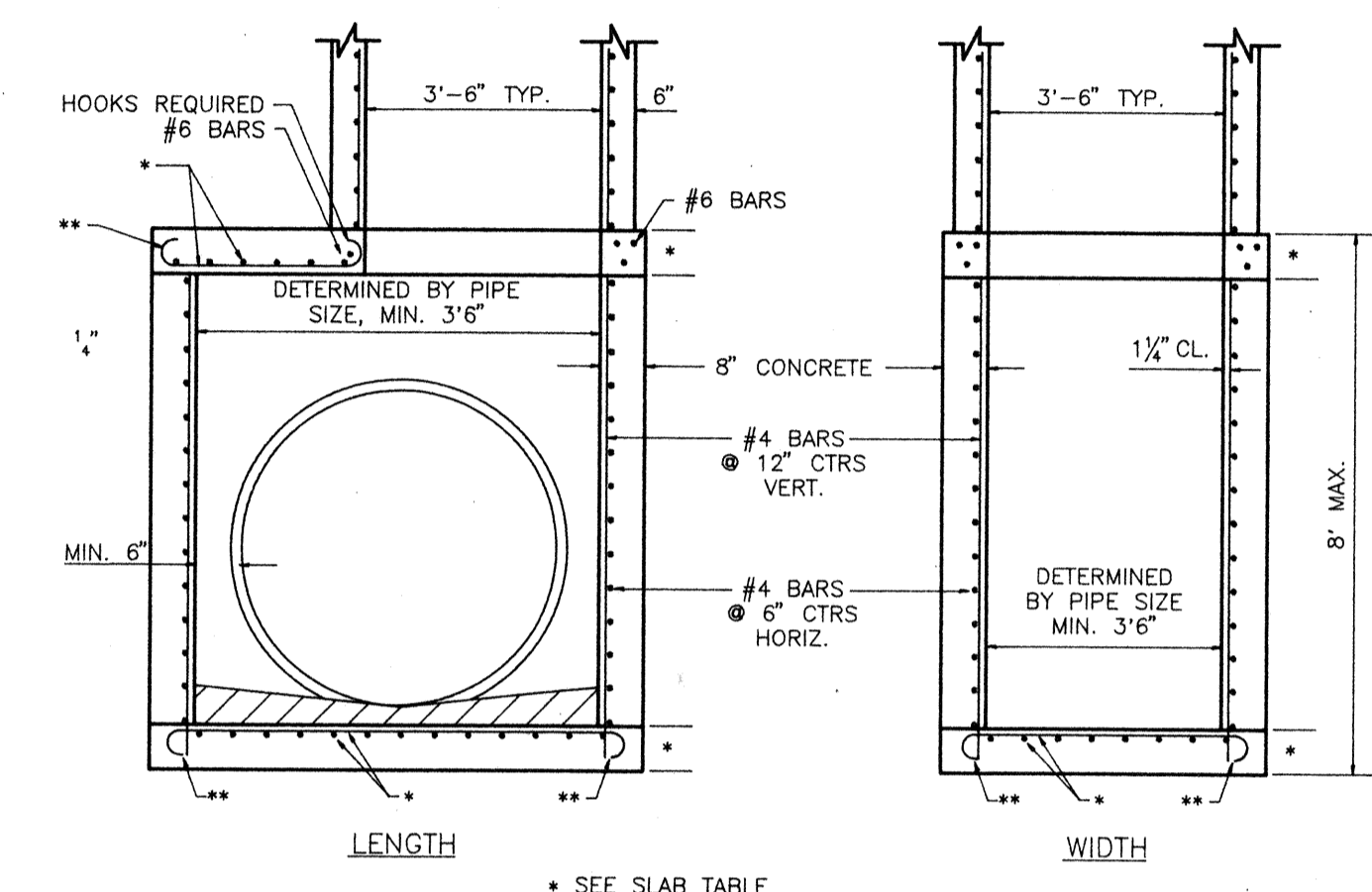


F.D.O.T. INDEX 211, TYPE 5

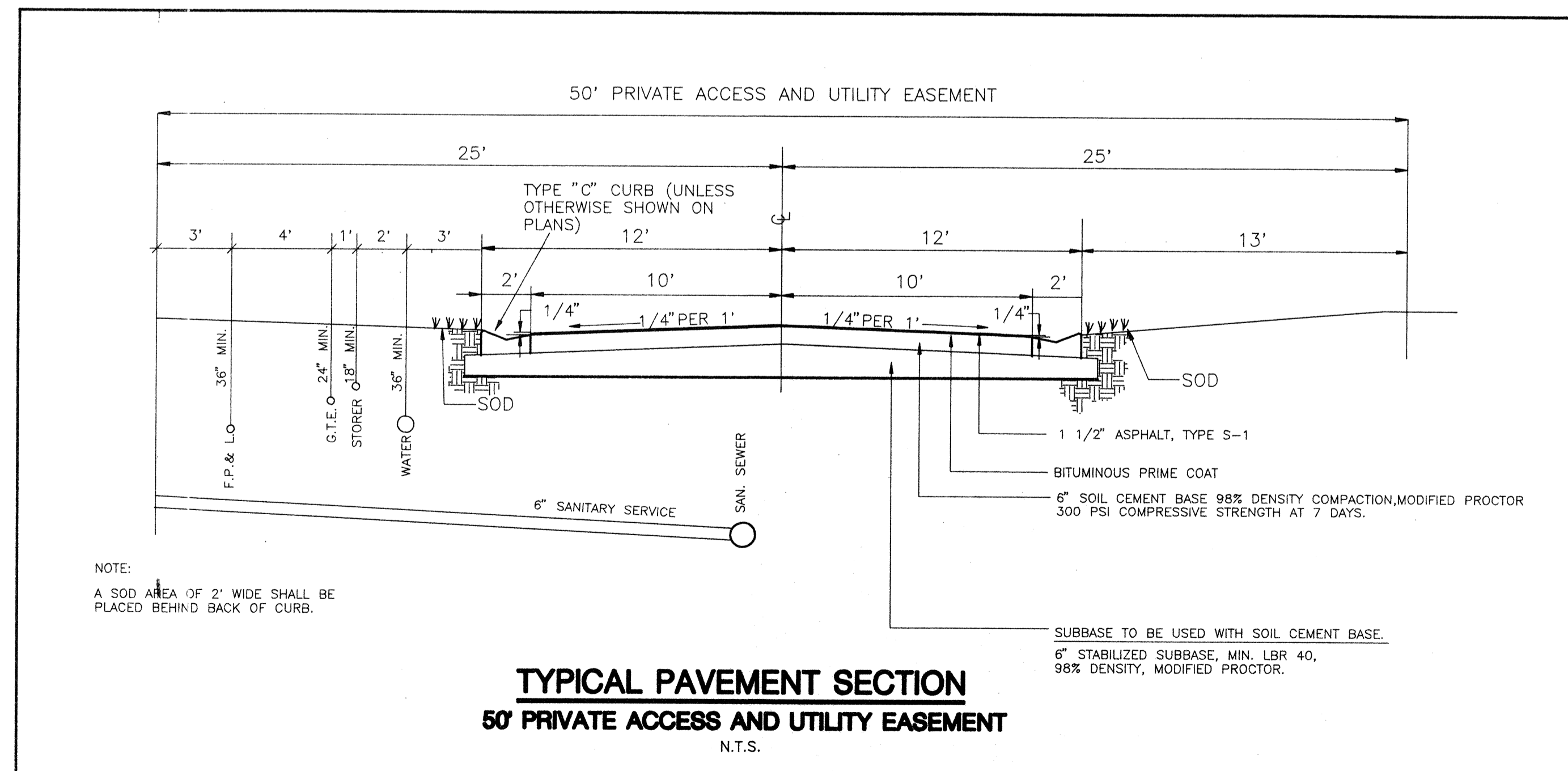
TOP AND FLOOR SLAB TABLE - TYPE J

WIDTH	MAX. LENGTH	BOX SLAB THICKNESS	ALLOWABLE FILL OVER TOP SLAB		REINFORCING TOP & FLOOR SLABS
			MIN.	MAX.	
3'-0"	6'-0"	8"	2"	23"	#6 @ 6" CTRS. B.W.
4'-0"	6'-0"	8"	2"	25"	#6 @ 6" CTRS. B.W.
5'-0"	6'-0"	10"	2"	27"	#7 @ 6" CTRS. B.W.
5'-0"	6'-0"	8"	2"	20"	#6 @ 6" CTRS. B.W.
6'-0"	6'-0"	10"	2"	25"	#7 @ 6" CTRS. B.W.
6'-0"	6'-0"	10"	2"	11"	#7 @ 6" CTRS. B.W.
5'-0"	7'-0"	10"	2"	25"	#7 @ 4-1/2" CTRS. B.W.
7'-0"	8'-0"	10"	2"	15"	#7 @ 4-1/2" CTRS. B.W.
8'-0"	8'-0"	10"	2"	15"	#7 @ 4-1/2" CTRS. B.W.

LARGER BOXES REQUIRE SPECIAL DESIGN DETAILS



* SEE SLAB TABLE
** PERIPHERAL BARS OR STRAIGHT END EMBEDMENTS MAY BE USED IN LIEU OF STANDARD HOOKS, IN ACCORDANCE WITH FOOT DETAILS INDEX #201, SH. 3 OF 5.



MINDER & RHODES ENGINEERING CORPORATION

Engineers - Planners - Surveyors

APPROVED: [Signature]

P.E. No. 37432
Date 11/17/13
Pri. No. 51088
CAD DWG. 51088(01)

3900 CLARK ROAD
SARASOTA, FL 34233
DESIGNED: WGH
CHECKED: [Signature]
DRAWN: DGH
SCALE: N/A
DATE: 07/30/12

REVISIONS

No.	Date	By	Descriptions

WESTON POINTE LONGBOAT KEY

SARASOTA COUNTY, FLORIDA

GRADING, PAVING & DRAINAGE DETAILS