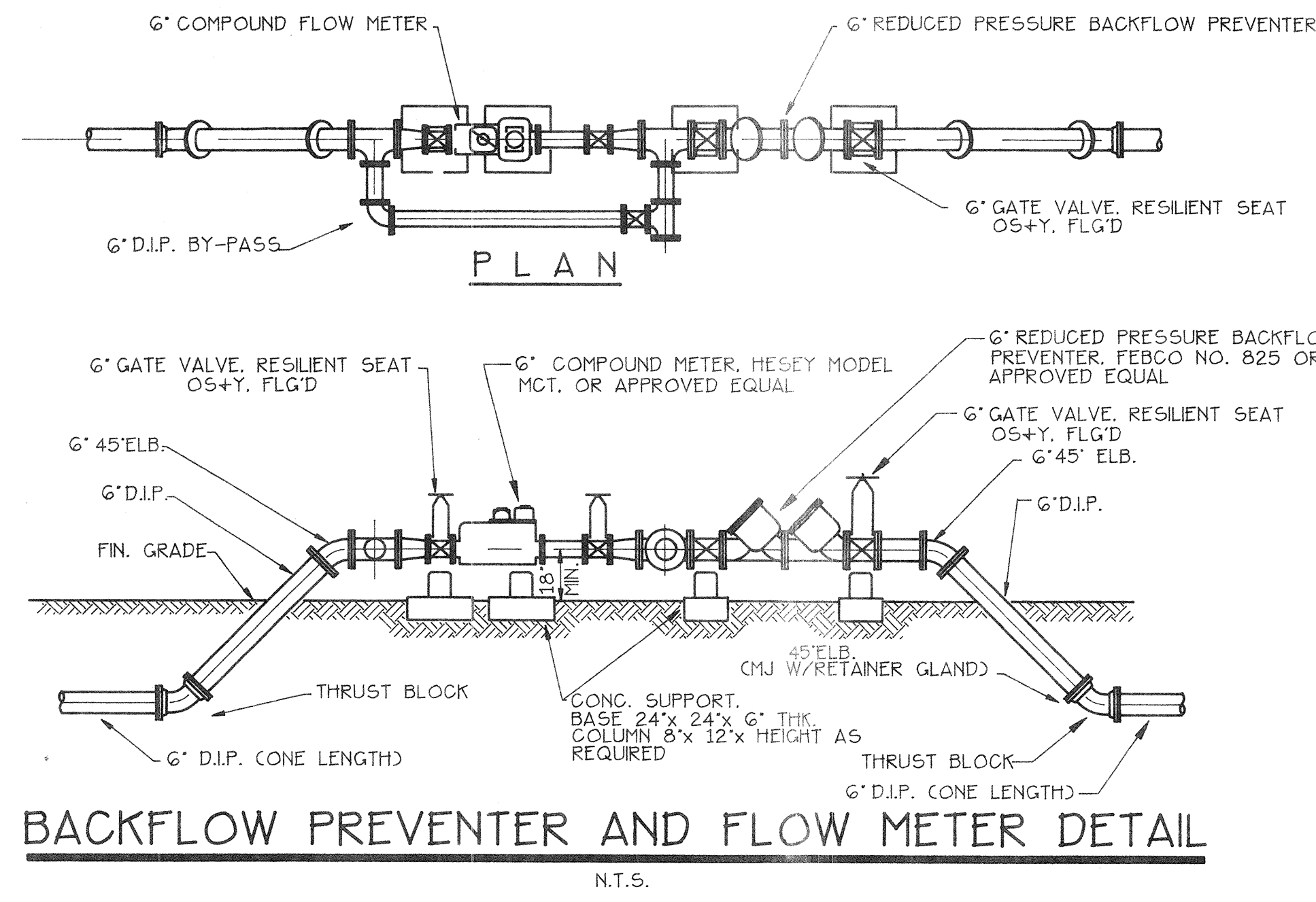
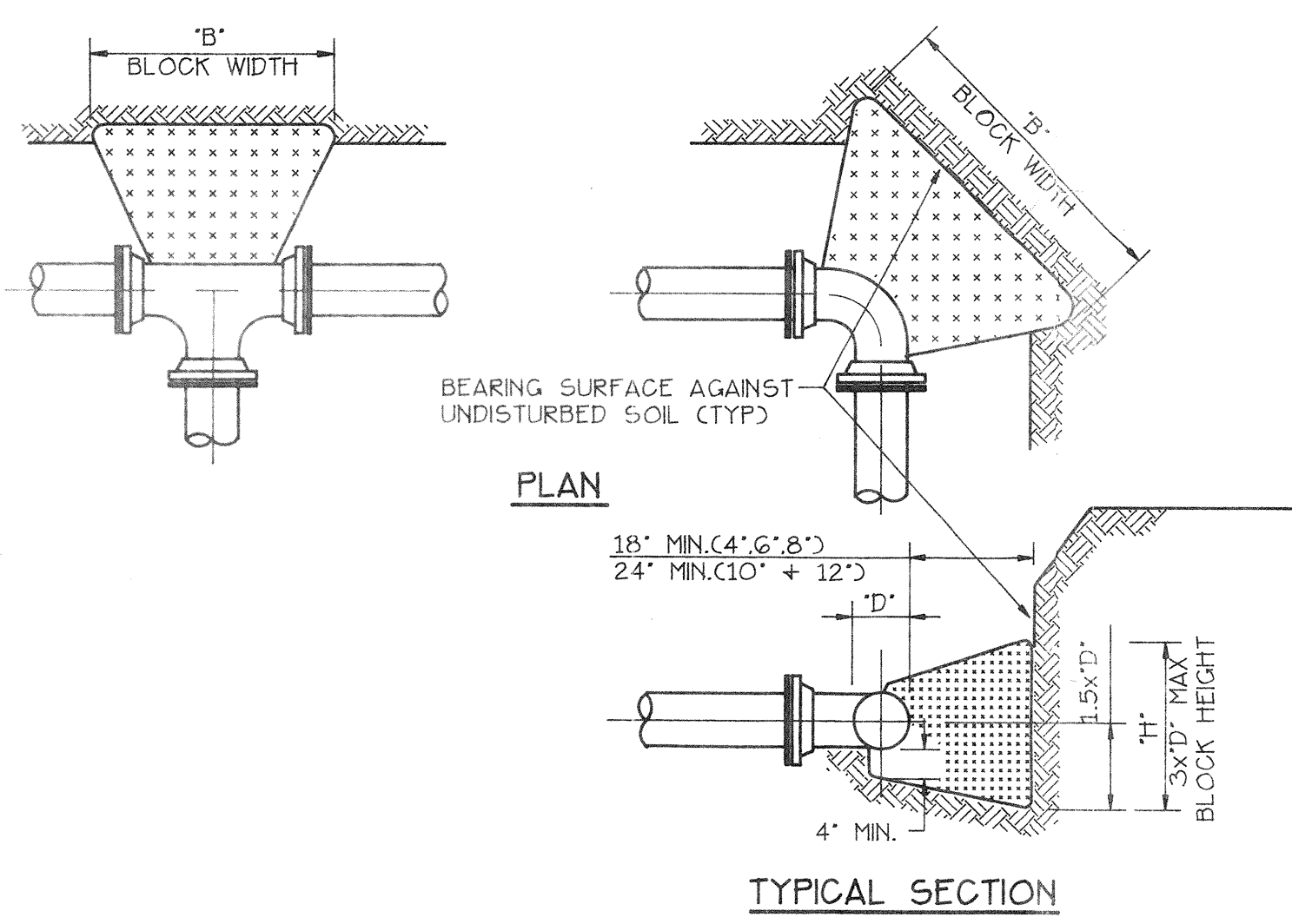


NOTE:
ALL P.V.C. MAIN SHALL BE COLOR CODED BLUE WITH CLASSIFICATION DR-18, CAWWA C900 WITH 36" COVER AND DETECTABLE TAPE



BACKFLOW PREVENTER AND FLOW METER DETAIL
N.T.S.



TYPICAL SECTION

BEARING SURFACE AREA (SQ. FT.)

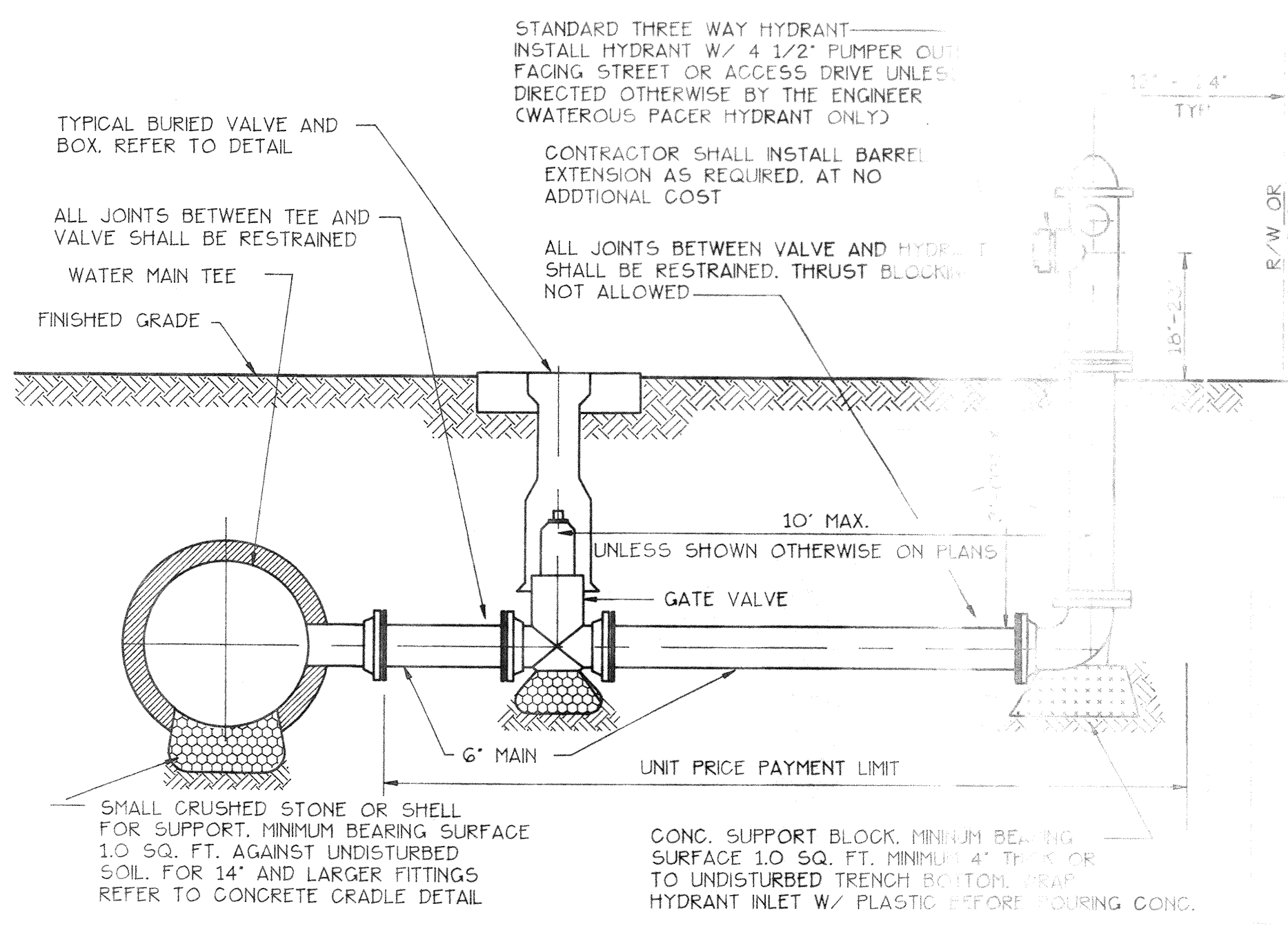
| PIPE SIZE | 90° ELB | 45° ELB | 22 1/2° ELB, 11 1/4° ELB. | TEE OR FLUG |
|-----------|---------|---------|---------------------------|-------------|
| 4" | 2.0 | 1.1 | 1.0 | 1.4 |
| 6" | 4.5 | 2.4 | 1.2 | 3.2 |
| 8" | 8.0 | 4.3 | 2.2 | 5.7 |
| 10" | 12.5 | 6.8 | 3.5 | 8.8 |
| 12" | 18.0 | 9.7 | 5.0 | 12.7 |

DESIGN PRESSURE = 150 PSI

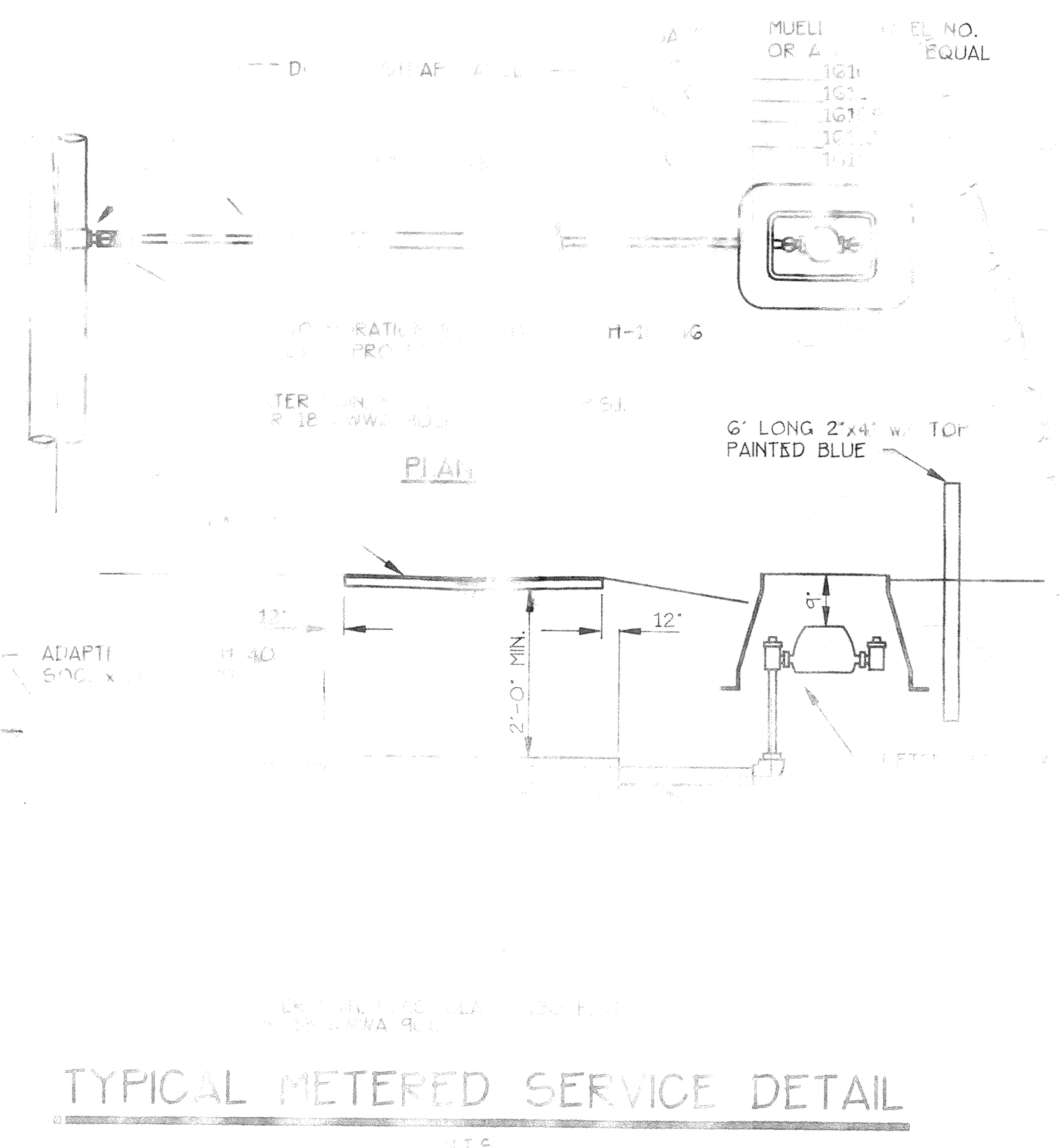
NOTES

1. THRUST BLOCK BEARING AREA BASED ON 2000 PSF SAFE SOIL BEARING. IF ACTUAL SOIL BEARING IS LESS THAN 2000 PSF, CONTRACTOR SHALL BE REQUIRED TO PLACE ADDITIONAL THRUST BEARING AS DETERMINED BY THE ENGINEER, AT NO ADDITIONAL COST.
2. THRUST BLOCKS SHALL BE POURED AGAINST UNDISTURBED SOIL.
3. CONCRETE SHALL BE KEPT CLEAR OF 'T' BOLT AND PLACED BENEATH FITTINGS AS SHOWN FOR SUPPORT. WRAP ALL FITTINGS WITH PLASTIC BEFORE POURING THRUST BLOCK CONCRETE.
4. BEFORE POURING CONCRETE, PLUGS SHALL BE WRAPPED WITH PLASTIC AND A PRESSURE TREATED BOARD PLACED BETWEEN IT AND THE CONCRETE.
5. 'B' SHALL NOT EXCEED 2 x 'H'.

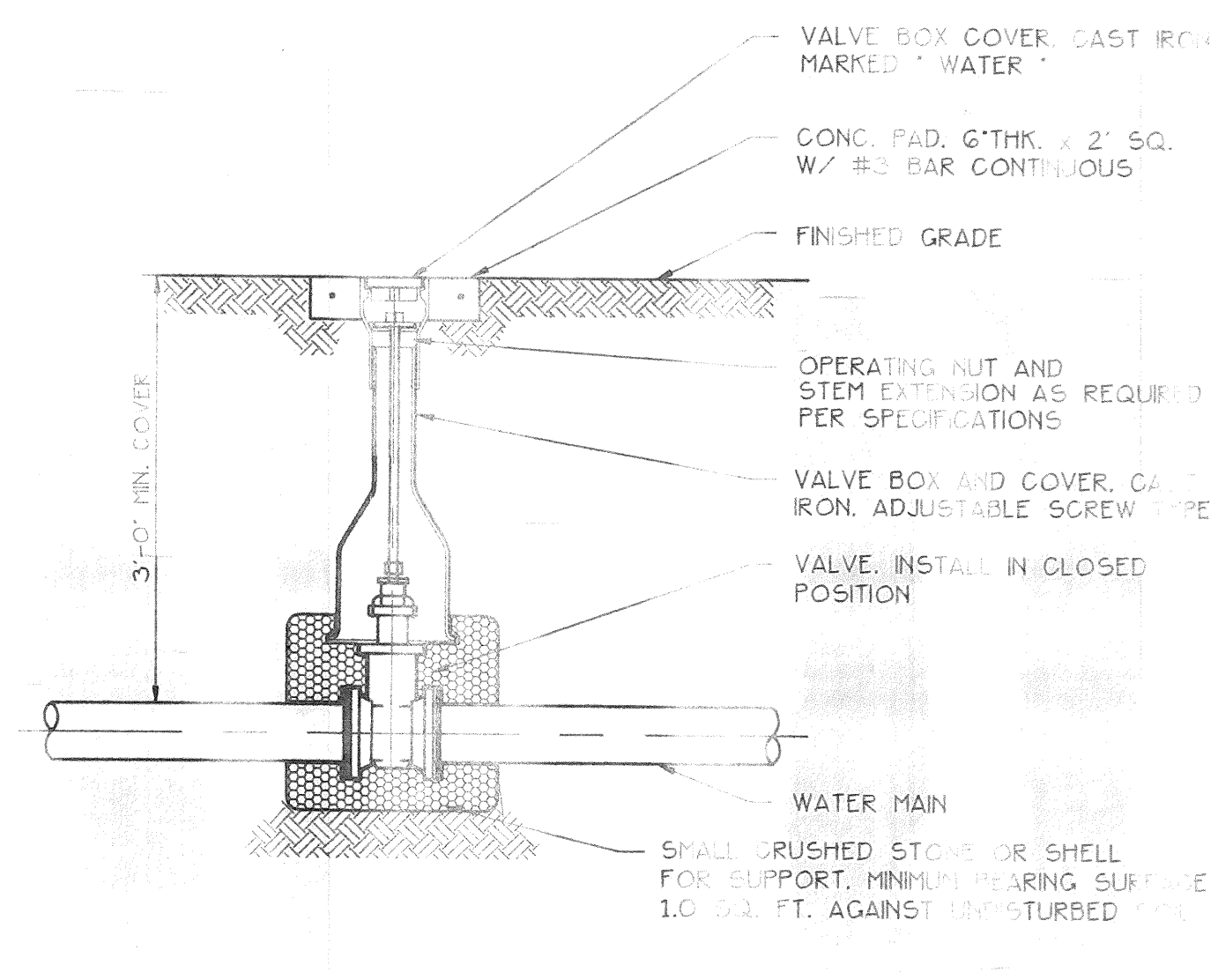
WATER MAIN THRUST BLOCK DETAIL
N.T.S.



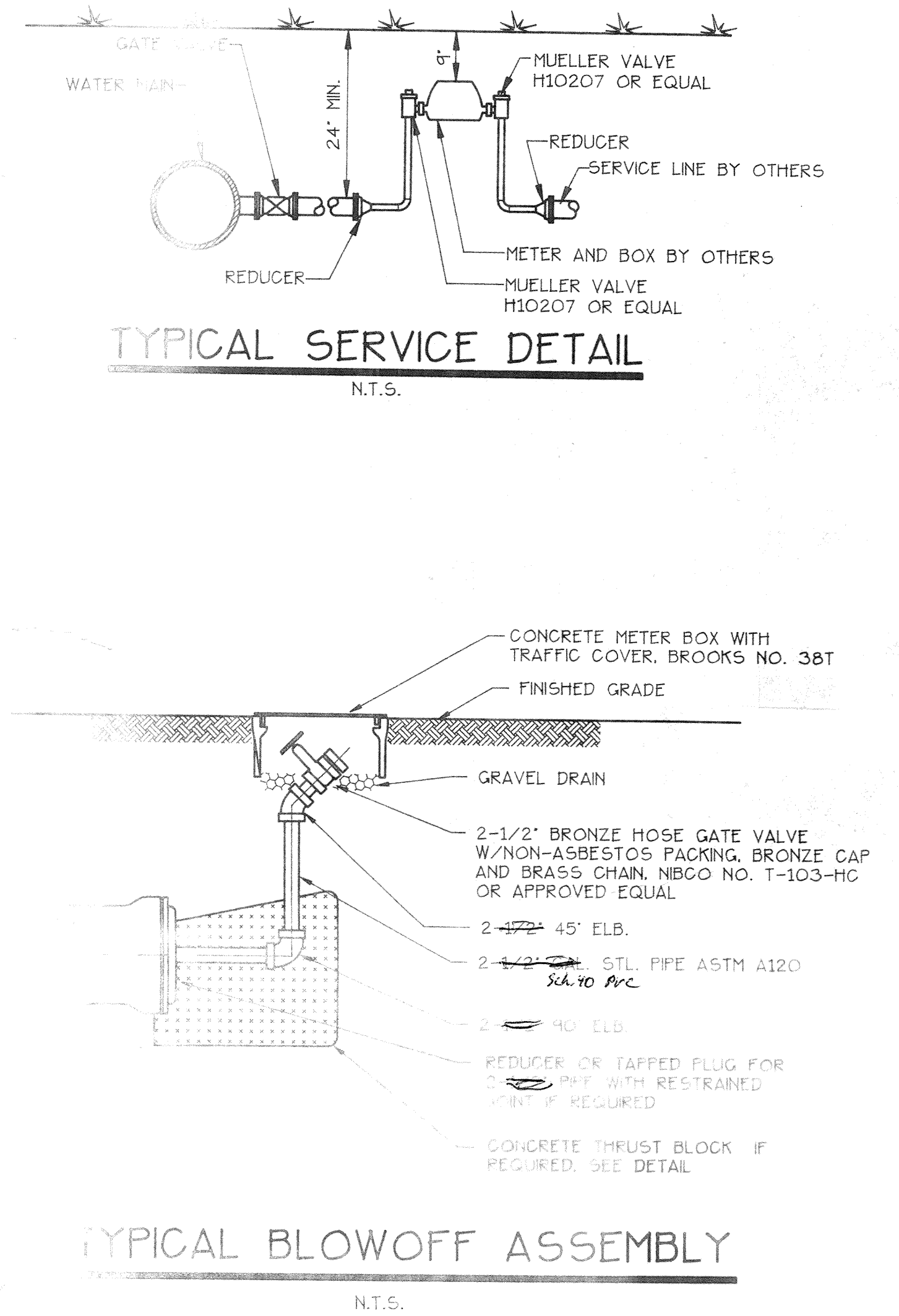
FIRE HYDRANT ASSEMBLY
N.T.S.



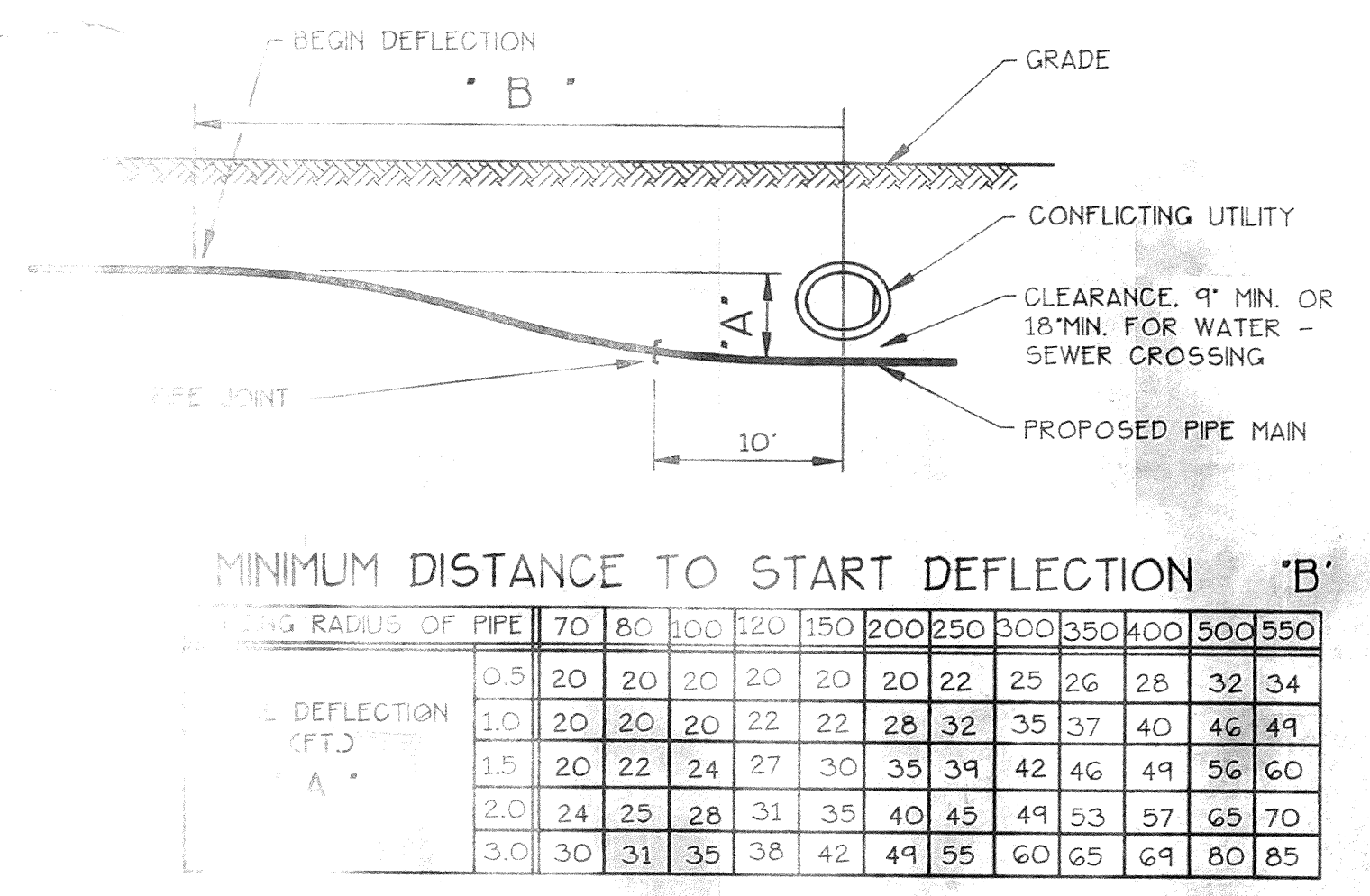
TYPICAL METERED SERVICE DETAIL
N.T.S.



BURIED VALVE DETAIL
N.T.S.



TYPICAL BLOWOFF ASSEMBLY
N.T.S.



MINIMUM DISTANCE TO START DEFLECTION 'B'

| BEG. DEFLECTION (FT.) | RADIUS OF PIPE | | | | | | | | | | | |
|-----------------------|----------------|----|-----|-----|-----|-----|-----|-----|-----|-----|-----|-----|
| | 70 | 80 | 100 | 120 | 150 | 200 | 250 | 300 | 350 | 400 | 500 | 550 |
| 0.5 | 20 | 20 | 20 | 20 | 20 | 20 | 22 | 25 | 26 | 28 | 32 | 34 |
| 1.0 | 20 | 20 | 20 | 22 | 22 | 28 | 32 | 35 | 37 | 40 | 46 | 49 |
| 1.5 | 20 | 22 | 24 | 27 | 30 | 35 | 39 | 42 | 46 | 49 | 56 | 60 |
| 2.0 | 24 | 25 | 28 | 31 | 35 | 40 | 45 | 49 | 53 | 57 | 65 | 70 |
| 3.0 | 30 | 31 | 35 | 38 | 42 | 49 | 55 | 60 | 65 | 69 | 80 | 85 |

ALL DEFLECTION RADIUS DETERMINED FOR ASTM D2241, SDR 21 AND C-900

| PIPE DIAMETER | 1 1/2" | 2" | 2 1/2" | 3" | 4" | 6" | 8" | 12" |
|---------------|--------|----|--------|-----|-----|-----|-----|-----|
| SDR 21 | 70 | 80 | 100 | 120 | 150 | 220 | 290 | 430 |
| C-900 | — | — | — | — | — | 200 | 300 | 400 |

UTILITY CROSSING DETAIL
N.T.S.

FIELD BOOK NO. _____
PAGE _____
DATE _____

| BY | DATE | Q.C. | DATE | DESCRIPTION |
|----|------|------|------|-------------|
| | | | | |
| | | | | |

| NO. | DATE | DESCRIPTION |
|-----|------|-------------|
| | | |
| | | |