

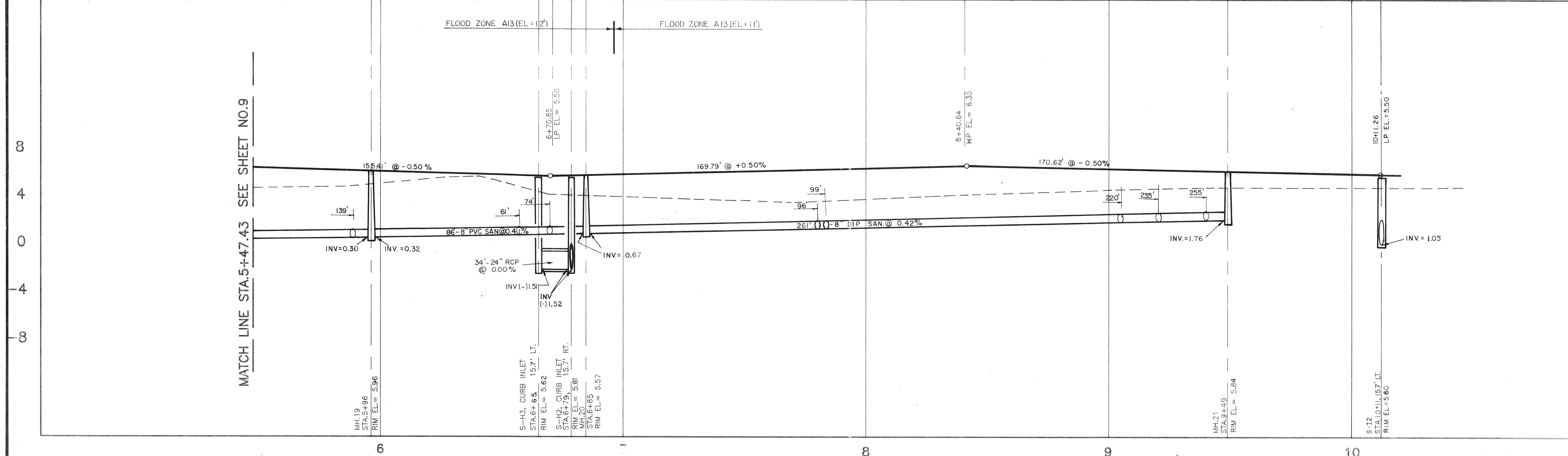
LEGEND

- SD — PROP. STORM DRAIN w/ CURB INLET
- SW — PROP. SANITARY SEWER w/ MANHOLE
- WM — PROP. WATERMAIN w/ GATE VALVE
- — EXISTING SPOT ELEVATION
- — PROPOSED SPOT ELEVATION

NOTE: ALL CURB IS TYPE "K" CURB UNLESS OTHERWISE NOTED

NOTE: ALL STATIONING FOR SANITARY MANHOLE'S; STORM CATCH BASIN'S & INLETS ETC. ARE GIVEN RELATIVE TO THE CENTERLINE STATIONING FOR THE PROPOSED ROADWAY.

SCALE:
 HORZ. 1" = 20'
 VERT. 1" = 4'



PROJECT ENGINEER	DESIGNED BY	DATE:	9-8-89
S.R.	CHECKED BY	PROJECT NO.	DBDS-0018
R.W.C.	PP/C/J/SR	Ph	(813) 371-6362
BY	REVISION	88 Sarasota Center Blvd.	Sarasota, Florida 34240
L.T.R.	DATE	78 Sarasota Center Blvd.	Sarasota, Florida 34240
TOWN OF LONGBOAT KEY, FLORIDA MANCHESTER BAY DIAMOND - CARVER, INC. AS-BUILT/ RECORD DRAWING OF WATERMAIN, SAN. & STORM SEWER BISHOP & ASSOCIATES, INC. CONSULTING ENGINEERS - SURVEYORS			
SHEET NUMBER			
11RD			
REVISION			