

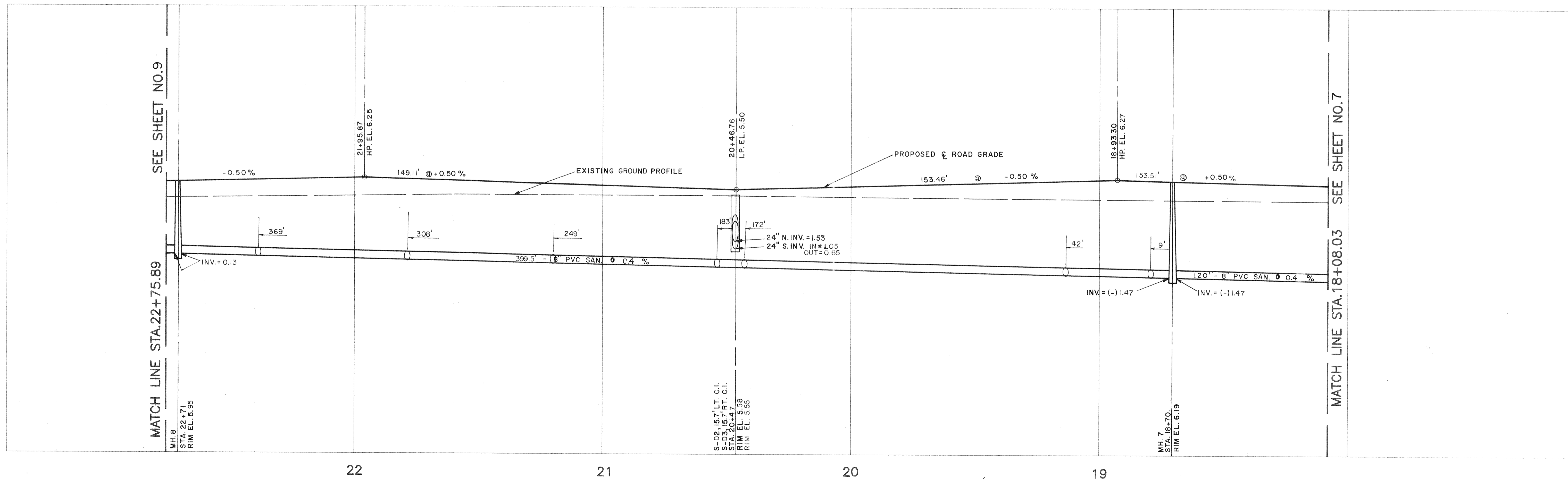
LEGEND

- SD — PROP. STORM DRAIN w/ CURB INLET
- SW — PROP. SANITARY SEWER w/ MANHOLE
- WM — PROP. WATERMAIN w/ GATE VALVE
- 5.55 ○ EXISTING SPOT ELEVATION
- 5.55 ○ PROPOSED SPOT ELEVATION

NOTE: ALL CURB IS TYPE "K" CURB UNLESS OTHERWISE NOTED.

NOTE: ALL STATIONING FOR SANITARY MANHOLE'S, STORM CATCH BASIN'S & INLETS ETC. ARE GIVEN RELATIVE TO THE CENTERLINE STATIONING FOR THE PROPOSED ROADWAY.

SCALE:
 HORZ. 1" = 20'
 VERT. 1" = 4'



DESIGNED BY	PROJECT ENGINEER
DATE:	9-8-89
CHECKED BY	SR
DRAWN BY	PP/C.J./SR/DBDS-0018
R.W.C.	
BY	
REVISION	
LTR.	DATE
TOWN OF LONGBOAT KEY, FLORIDA MANCHESTER BAY DIAMOND - CARVER, INC. AS-BUILT/RECORD DRAWING OF WATERMAIN, SAN. & STORM SEWER LINES AND CURBS - SURVEYORS	
78 Sarasota Center Blvd. Sarasota, Florida 34240 Ph (941) 555-3424	
SHEET NUMB	80
REVISION	