

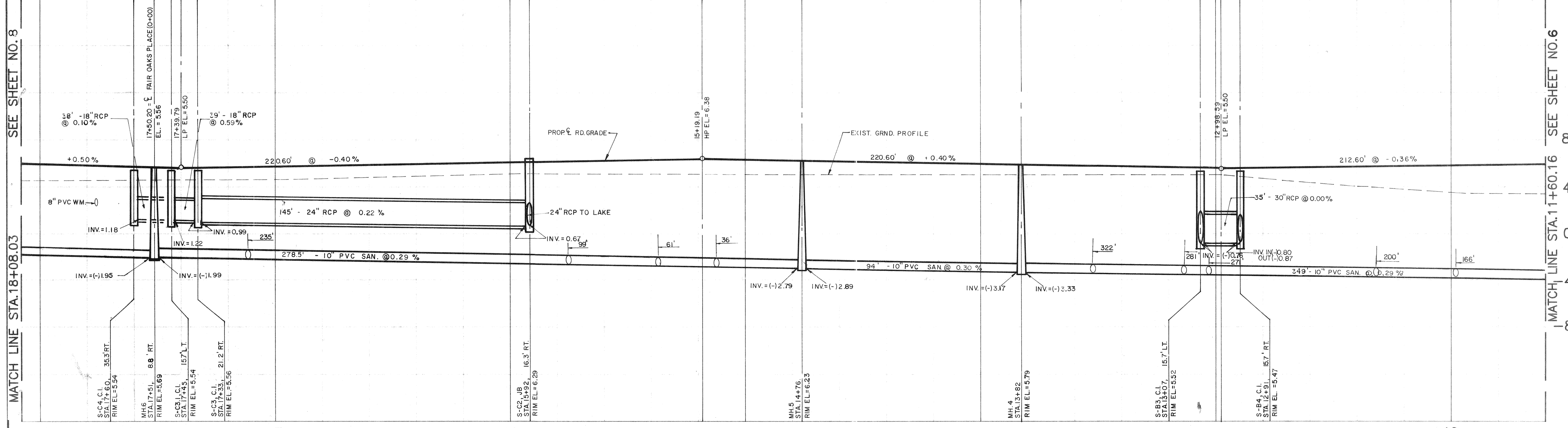
NOTE: ALL STATIONING FOR SANITARY MANHOLE'S, STORM CATCH BASIN'S & INLETS ETC. ARE GIVEN RELATIVE TO THE CENTERLINE STATIONING FOR THE PROPOSED ROADWAY.

3 REFERS TO H.R.S. WATER SAMPLE COLLECTION NO. TYP.

LEGEND	
	PROP. STORM DRAIN W/CURB INLET
	PROP. SANITARY SEWER W/MANHOLE
	PROP. WATERMAIN W/GATE VALVE
	EXISTING SPOT ELEVATION
	PROPOSED SPOT ELEVATION

NOTE: ALL CURB IS TYPE "K" CURB UNLESS OTHERWISE NOTED.

SCALE:  
 HORZ. 1" = 20'  
 VERT. 1" = 4'



SEE SHEET NO. 8

SEE SHEET NO. 6

18 17 16 15 14 13 12

1.24  
 7  
 8.64

DESIGNED BY	PROJECT ENGINEER
DATE:	9-8-89
CHECKED BY	S.R.
PP/C/J/SR/DBS-0018	
BY	
SCALE:	1" = 20'
DRAWN BY	R.W.C.
REVISION	
DATE	
L.T.R.	
TOWN OF LONGBOAT KEY, FLORIDA	
MANCHESTER BAY	
DIAMOND - CARVER, INC.	
AS-BUILT/RECORD DRAWING OF WATERMAIN, SAN. & STORM SEWER	
ENGINEER BISHOP & ASSOCIATES, INC. CONSULTING ENGINEERS - SURVEYORS	
88 S. W. 11th St., Ft. Lauderdale, Florida 33304	
78 Sarasota Center Blvd. Sarasota, Florida 34240 Ph (813) 371-6362	
SHEET NUMBER	7RD
VISION	