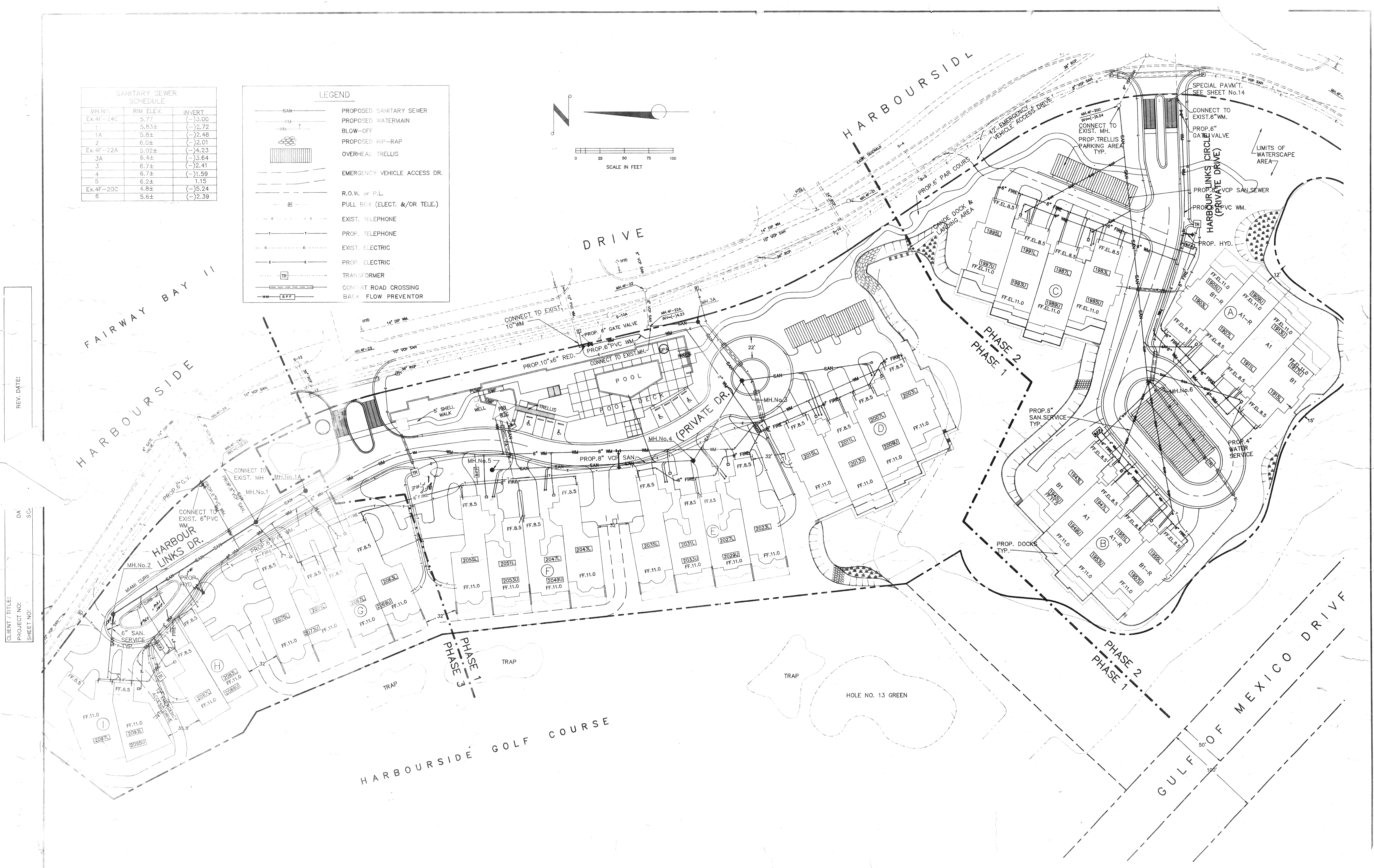
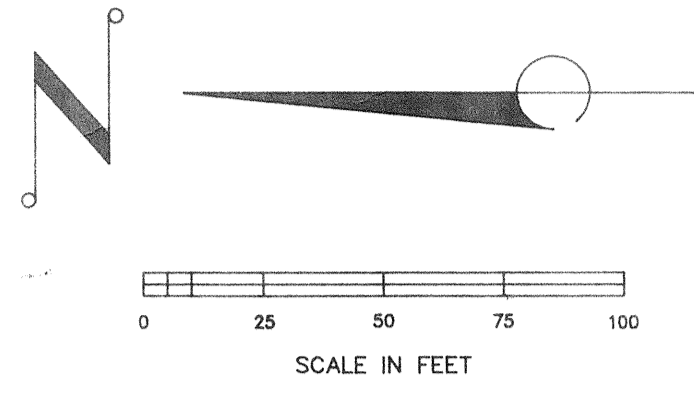


SANITARY SEWER SCHEDULE		
MH. NO.	RIM ELEV.	INVERT
Ex. 4F-24C	5.77	(-)3.00
1	5.83±	(-)2.72
1A	5.8±	(-)2.48
2	6.0±	(-)2.01
Ex. 4F-22A	5.02±	(-)4.23
3A	6.4±	(-)3.64
3	6.7±	(-)2.41
4	6.7±	(-)1.59
5	6.2±	(-)1.15
Ex. 4F-20C	4.8±	(-)5.24
6	5.6±	(-)2.39

LEGEND	
	PROPOSED SANITARY SEWER
	PROPOSED WATERMAIN
	BLOW-OFF
	PROPOSED RIP-RAP
	OVERHEAD TRELLIS
	EMERGENCY VEHICLE ACCESS DR.
	R.O.W. or P.L.
	PULL BOX (ELECT. &/OR TELE.)
	EXIST. TELEPHONE
	PROP. TELEPHONE
	EXIST. ELECTRIC
	PROP. ELECTRIC
	TRANSFORMER
	CONDUIT ROAD CROSSING
	BACK FLOW PREVENTOR



REV. DATE:

CLIENT/TITLE:
PROJECT NO:
SHEET NO:

WILLIAM F. BISHOP & ASSOCIATES, INC.
CONSULTING ENGINEERS SURVEYORS
9131 371-6362

REVISED	DATE	DESCRIPTION

DATE	MAY 88
SCALE	1" = 40'
DESIGN	M.E.O.
DRAWN	P.J./RWC
CHECKED	M.E.O.
APPROVED	

SEAL APPROVED BY

CLIENT/TITLE
BAY ISLES
HARBOUR LINKS
UTILITY PLAN
HARBOUR LINKS

PROJECT NO.
FALC-0001
SHEET NO.
C II