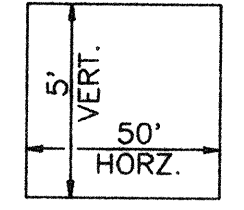
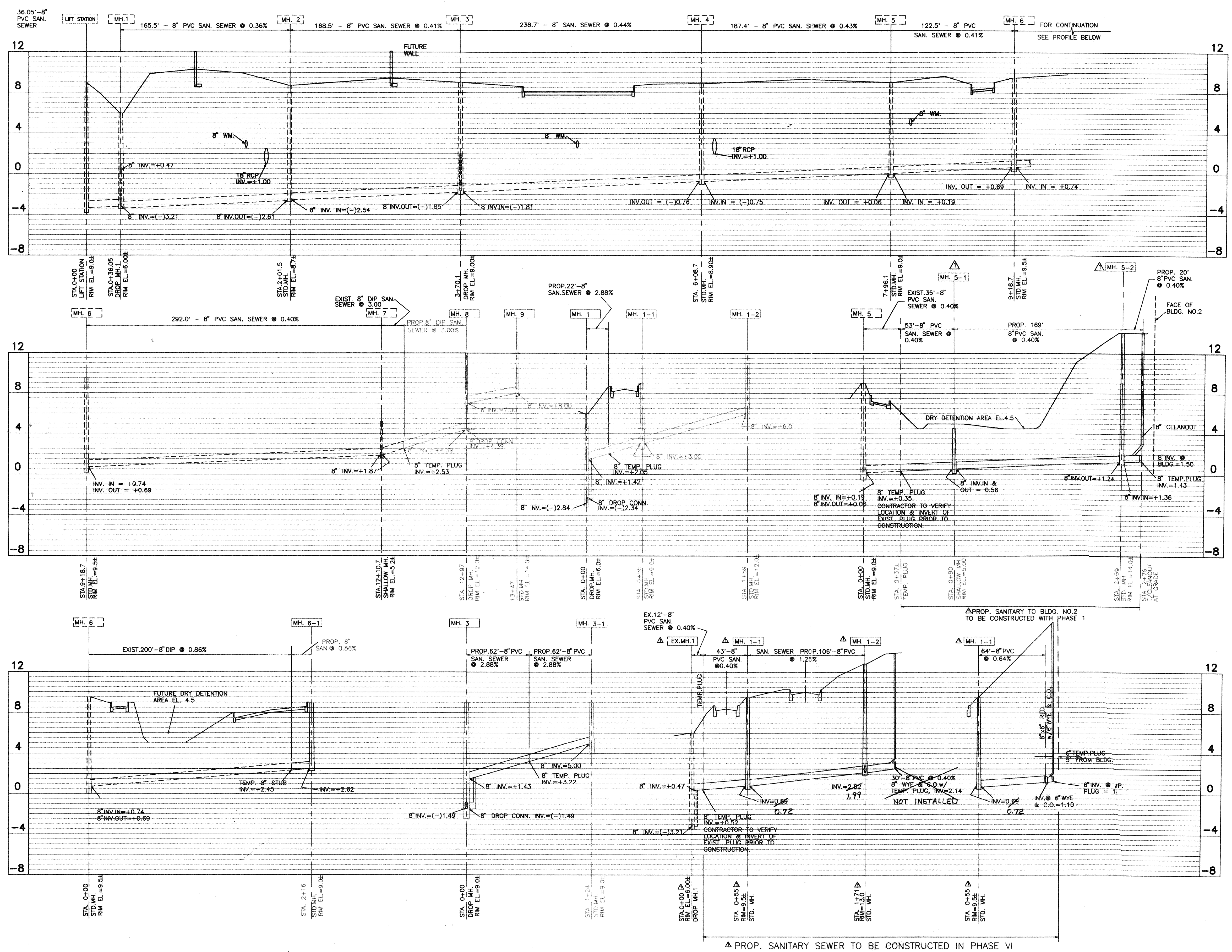
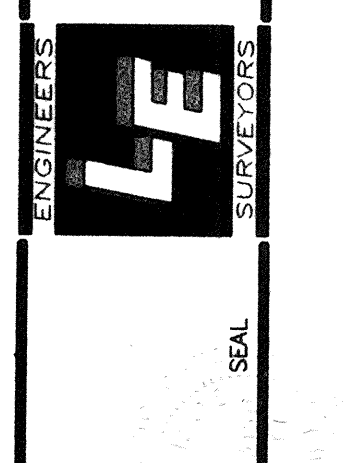


GRAND BAY
PHASE VI CONSTRUCTION PLANS
SANITARY SEWER PROFILES



DATE	INITIALS	DESCRIPTION
7/6/94	RWC	REV. SEWER INTO BLDGS 2 & 6
4/6/94	STAFF	AS NOTED
	DESIGN	
	DRAWN	
	CHECKED	
	APPROVED	

LANDRY & ESBER
ENGINEERS - SURVEYORS
130 N. Tamiami Trail, Suite 301 Sarasota, Florida 34236
(813)955-6004 FAX (813)955-7501



APPROVED: *[Signature]* 3/2/96
ENGINEER OF RECORD DATE
NOT ISSUED FOR CONSTRUCTION
PROJECT NO: A00120
SHEET NO: C-4