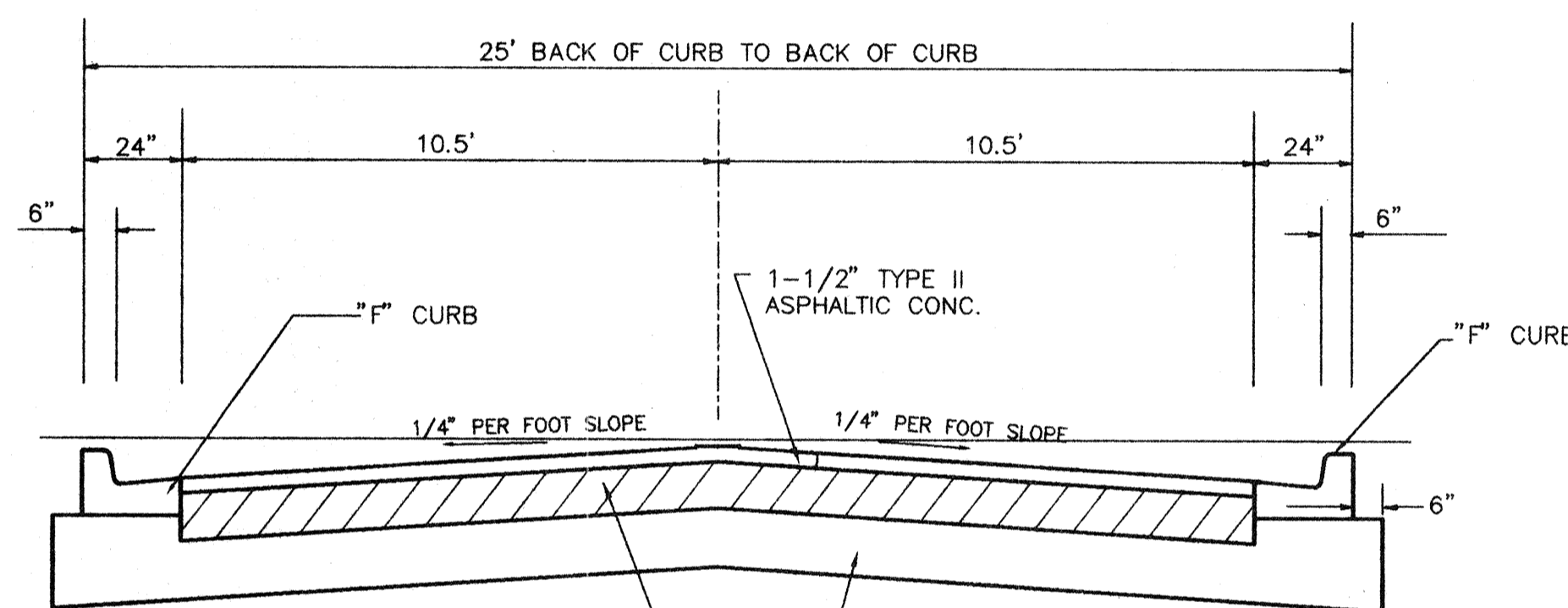


6" COMPACTED SHELL BASE
LBR-100 COMPACTED TO
98% AASHTO T-180

8" STABILIZED SUBGRADE
LBR-40 COMPACTED TO
98% DENSITY

TYPICAL ENTRANCE ROADWAY SECTION

N.T.S.

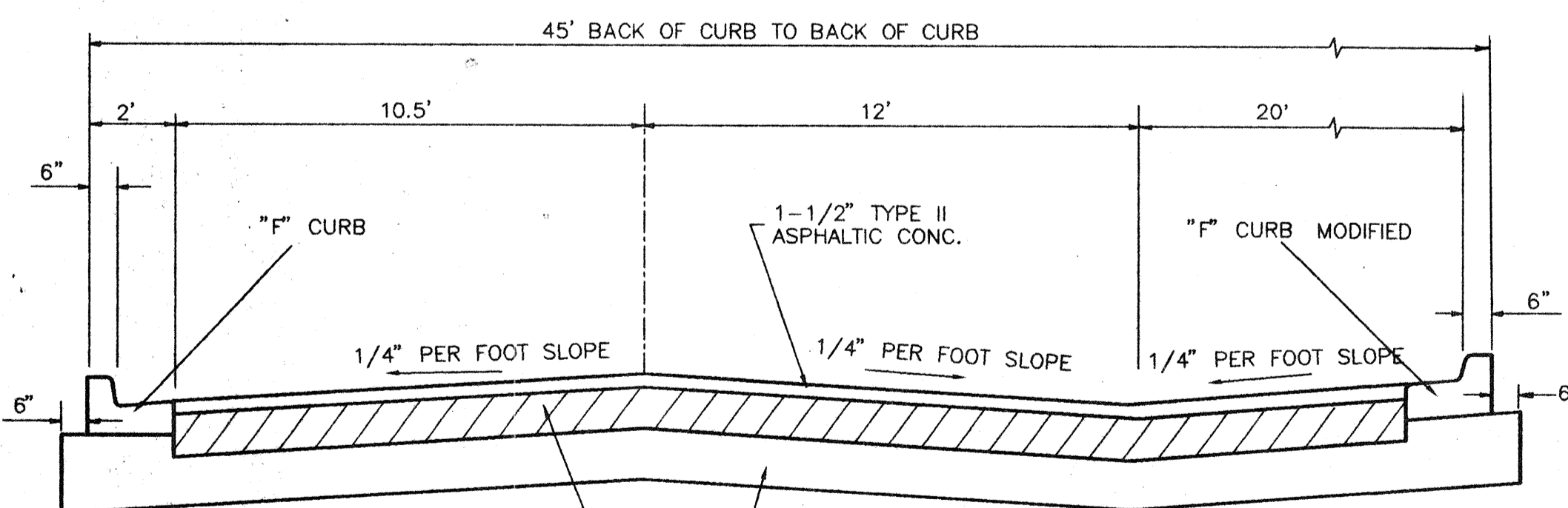


6" THICK COMPACTED SHELL BASE
LBR 100 (COMPACTED TO 98% DENSITY
AASHTO T-180)

8" THICK STABILIZED SUBGRADE
(LBR 40) COMPACTED TO 98% DENSITY

TYPICAL ROADWAY SECTION

N.T.S.



6" THICK COMPACTED SHELL BASE
LBR 100 (COMPACTED TO 98% DENSITY
AASHTO T-180)

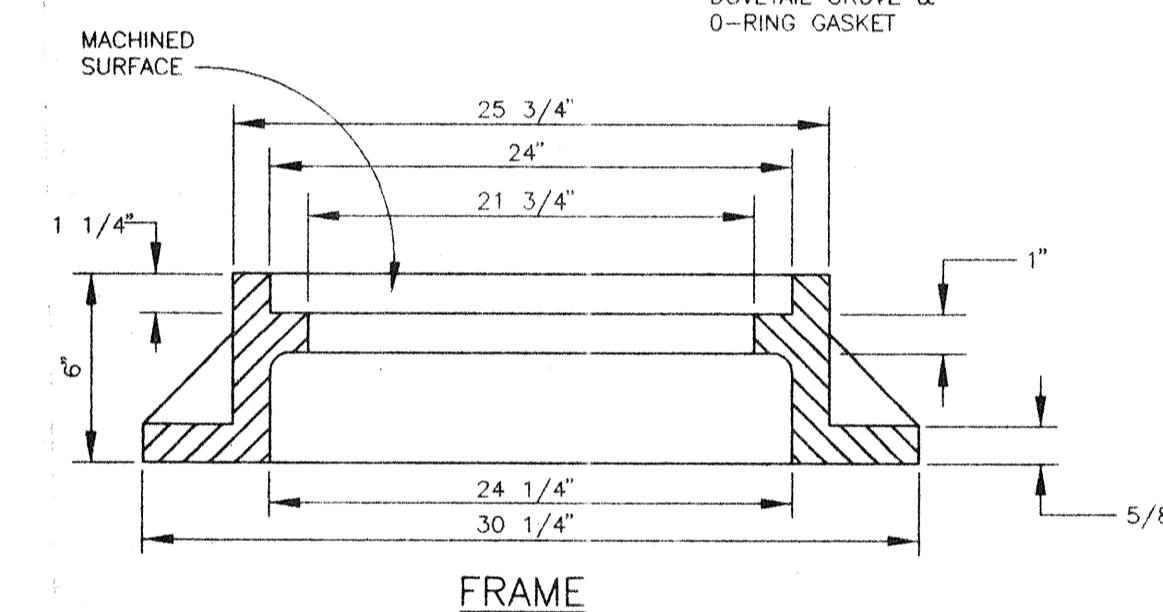
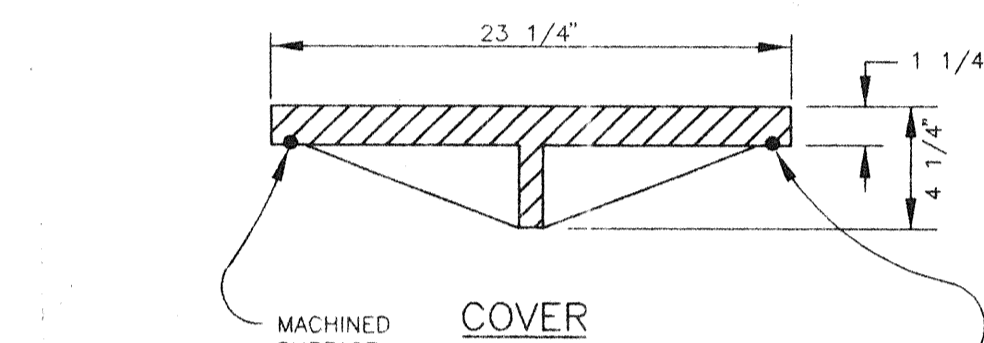
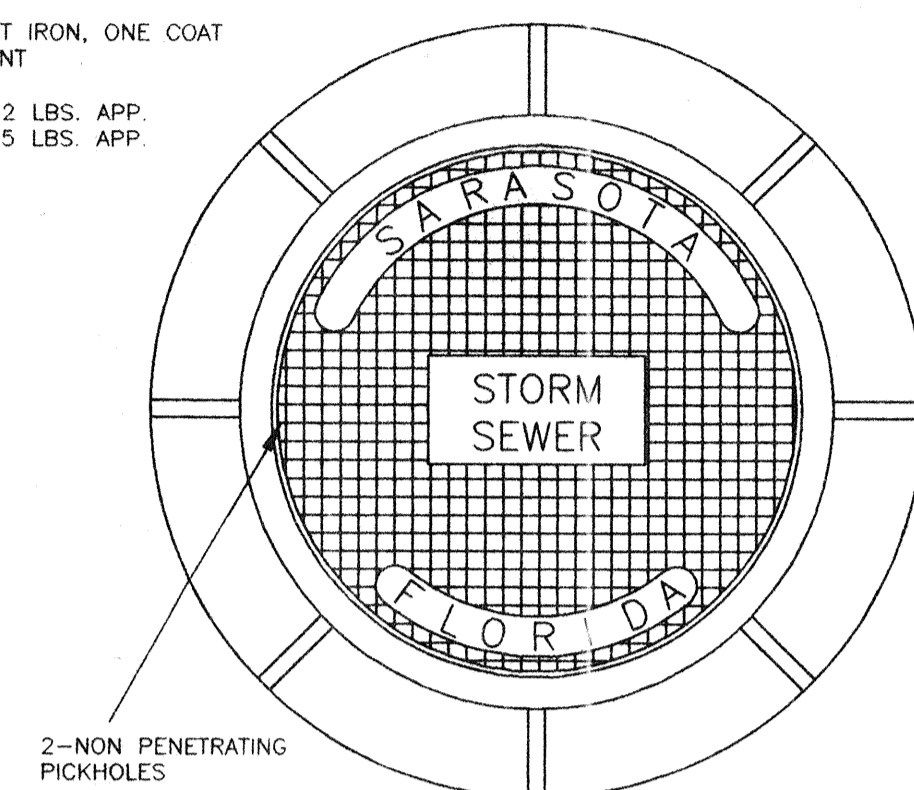
8" THICK STABILIZED SUBGRADE
(LBR 40) COMPACTED TO 98% DENSITY

TYPICAL ROADWAY SECTION & PARKING SECTION

N.T.S.

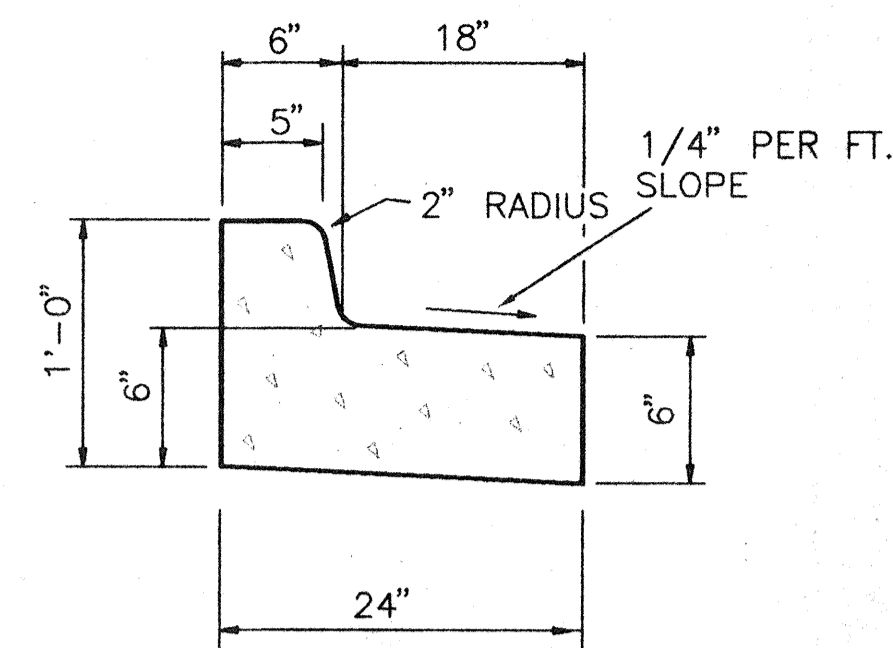
NOTE:
MATERIAL, CAST IRON, ONE COAT
ASPHALTIC PAINT

COVER WT. 212 LBS. APP.
FRAME WT. 155 LBS. APP.



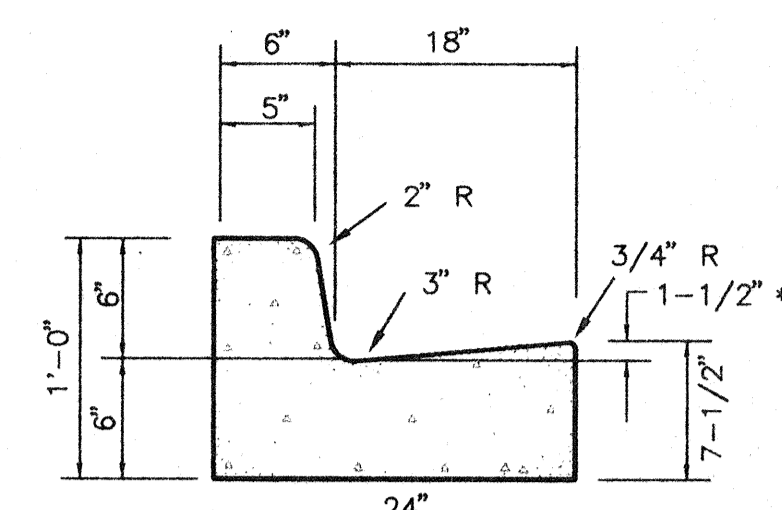
STANDARD SERVICE MANHOLE COVER

N.T.S.



TYPE "F" CURB MODIFIED

N.T.S.

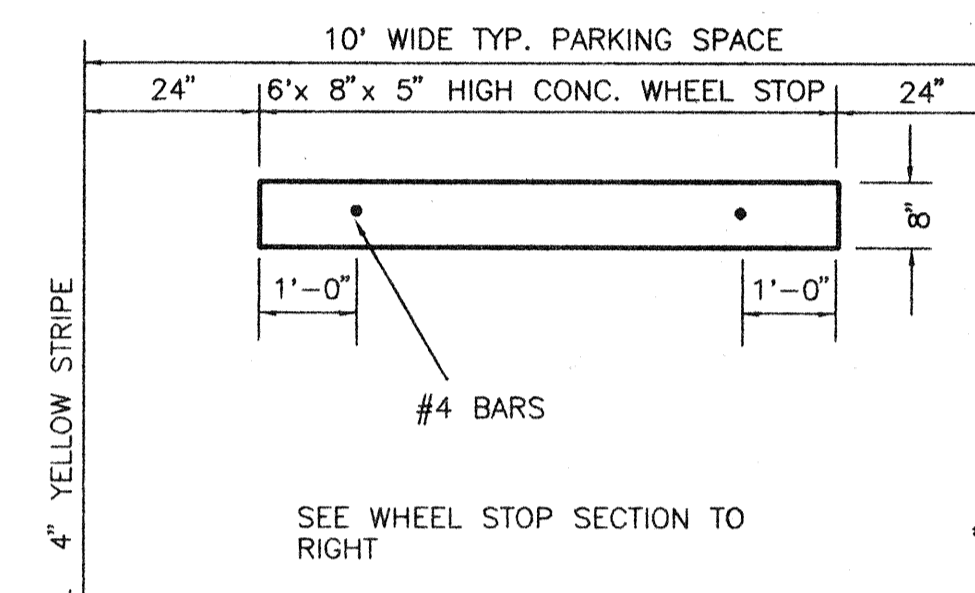


TYPE "F" CURB

N.T.S.

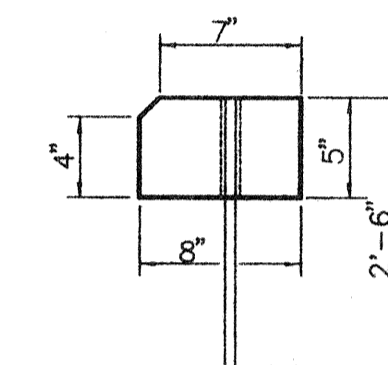
* 1/4" AT PLACES WHERE
PROPOSED TO FOLLOW ADJACENT
PAVER SLOPE. PROVIDE
TRANSITION OF CURB BETWEEN
REGULAR "H" CURB AND
MODIFIED AS ABOVE.

CAUTION: NOTE CURB TRANSITIONS ON GRADING PLAN



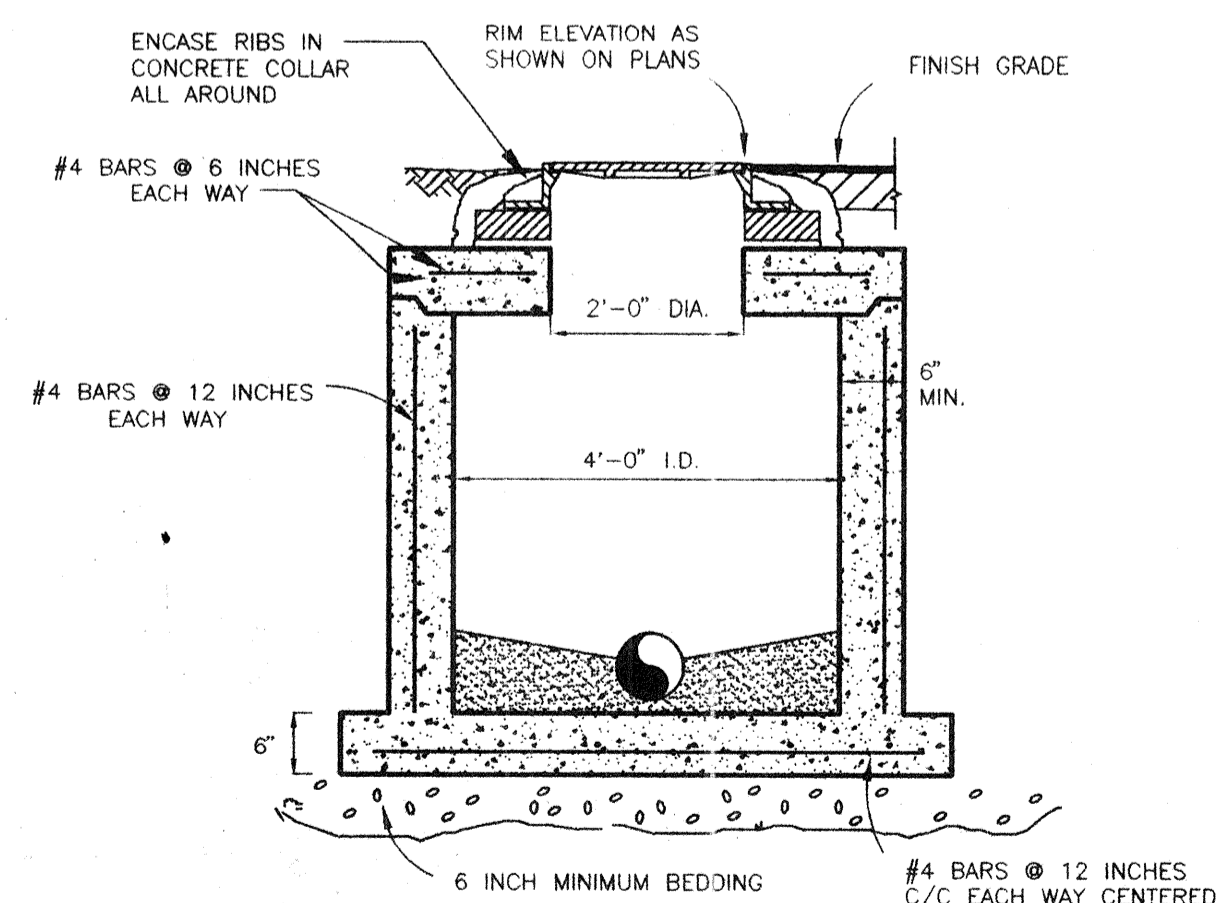
CONCRETE WHEEL STOP

N.T.S.



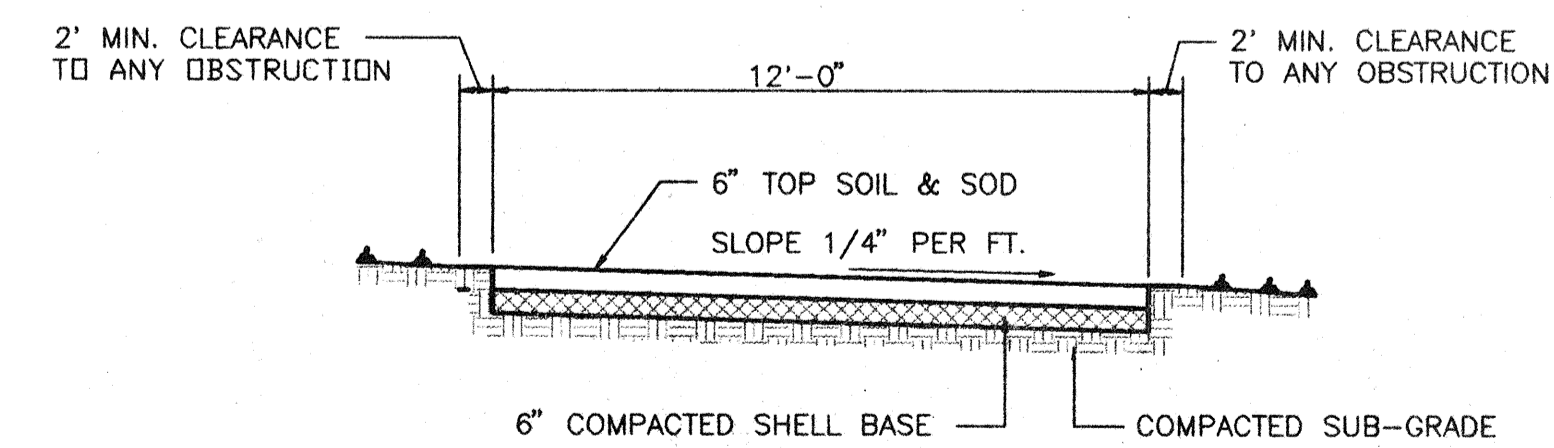
WHEEL STOP SECTION

N.T.S.



PRECAST JUNCTION BOX

N.T.S.



**TYPICAL SECTION OF 12'
EMERGENCY VEHICLE ACCESS DRIVE**

N.T.S.

GRAND BAY
PHASE V CONSTRUCTION PLAN
PAVING, GRADING & DRAINAGE DETAILS

DATE	SCALE	DESIGN	DRAWING	CHECK	APPROVED	DESCRIPTION
1/19/95	N.T.S.	N/A	N/A	N/A	N/A	REVISED

Landry & Esber
ENGINEERS - SURVEYORS

130 N. Tamiami Trail, Suite 301 Sarasota, Florida 34236
(813)955-6004 FAX (813)955-7501

APPROVED: *[Signature]* DATE: _____
ENGINEER OF RECORD
ISSUED FOR CONSTRUCTION

PROJECT NO: B00125
SHEET NO: C-5