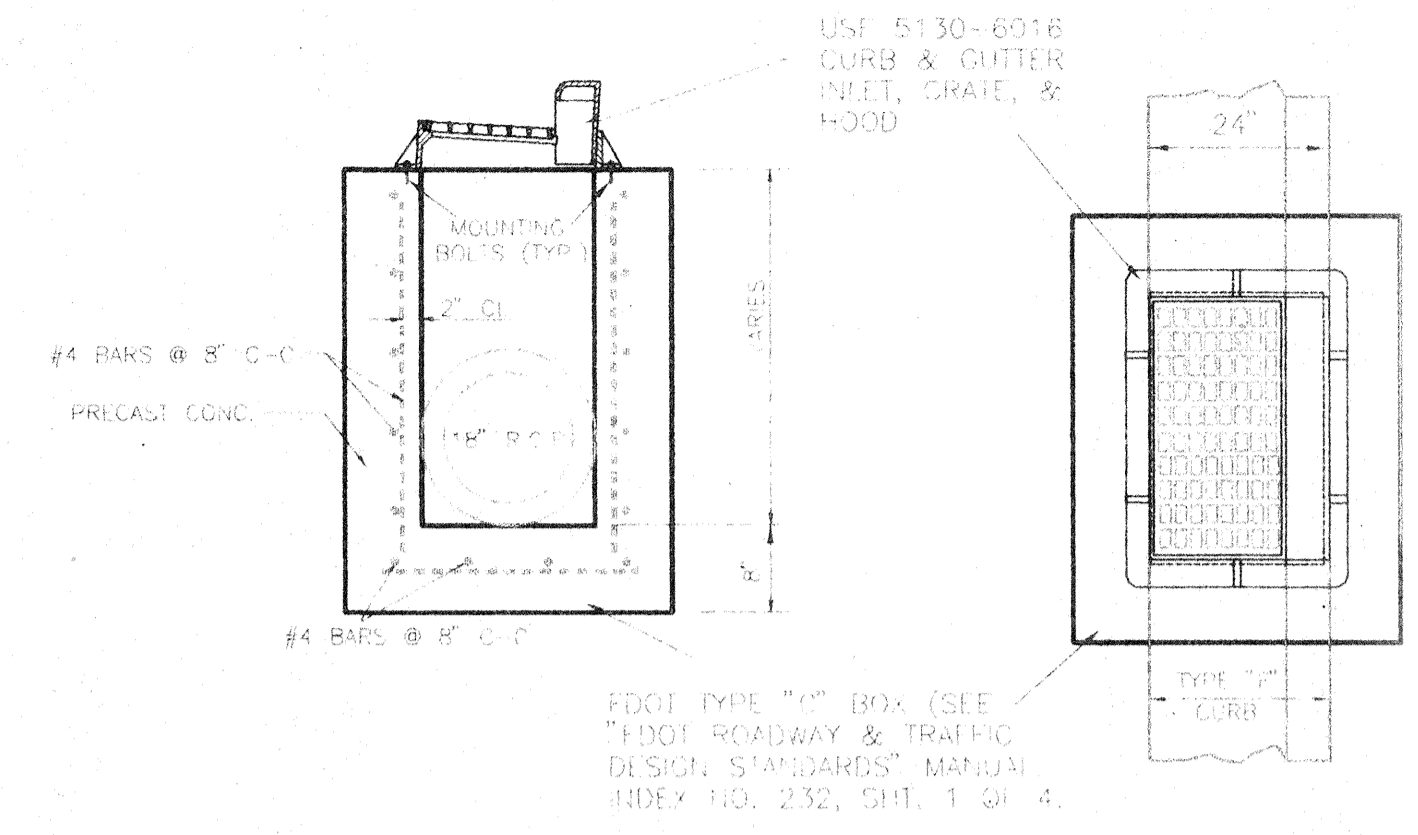


USF 4120 FRAME & GRATE #6170

| GRATE NUMBER | LOAD RATING | FLOW AREA | GRATE WEIGHT | TOTAL WEIGHT |
|--------------|-------------|-----------|--------------|--------------|
| 6170 | MEDIUM DUTY | 355 | 220 | 530 |

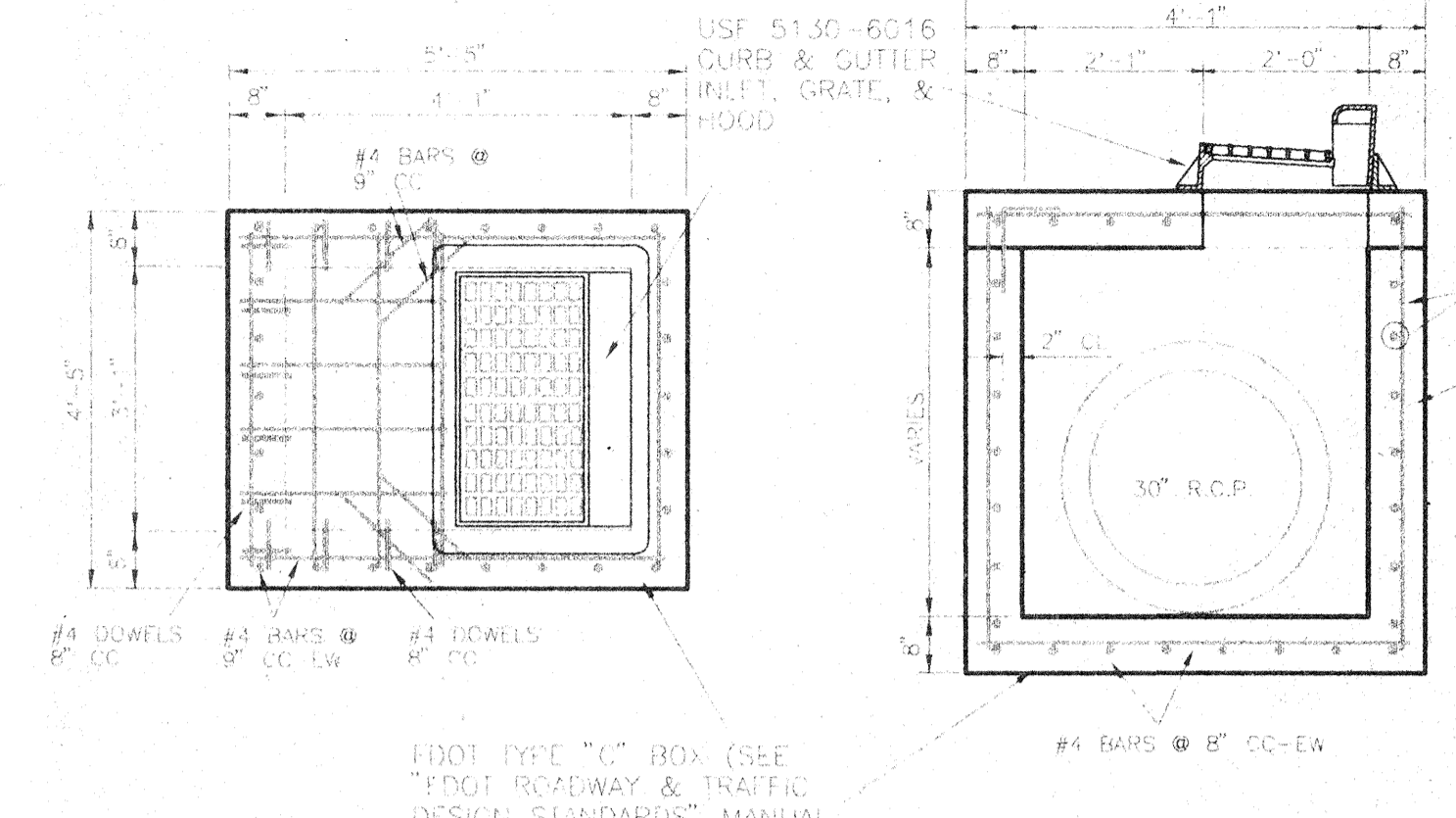
YARD DRAIN DETAIL
TYPE "C" BOX
 N.T.S.



USF 5130 CURB & GUTTER INLET FRAME, GRATE, & HOOD SERIES

| GRATE NUMBER | LOAD RATING | FLOW AREA | GRATE WEIGHT | TOTAL WEIGHT |
|--------------|-------------|-----------|--------------|--------------|
| 6016 | HEAVY DUTY | 265 | 155 | 565 |

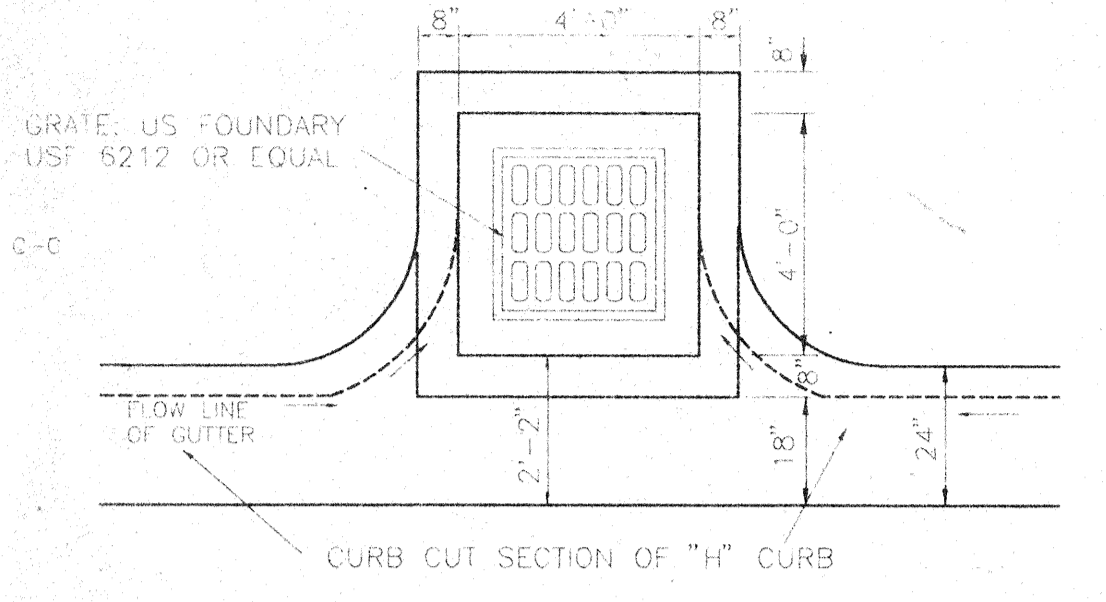
TYPE "F" CURB INLET
TYPE "C" BOX
 N.T.S.



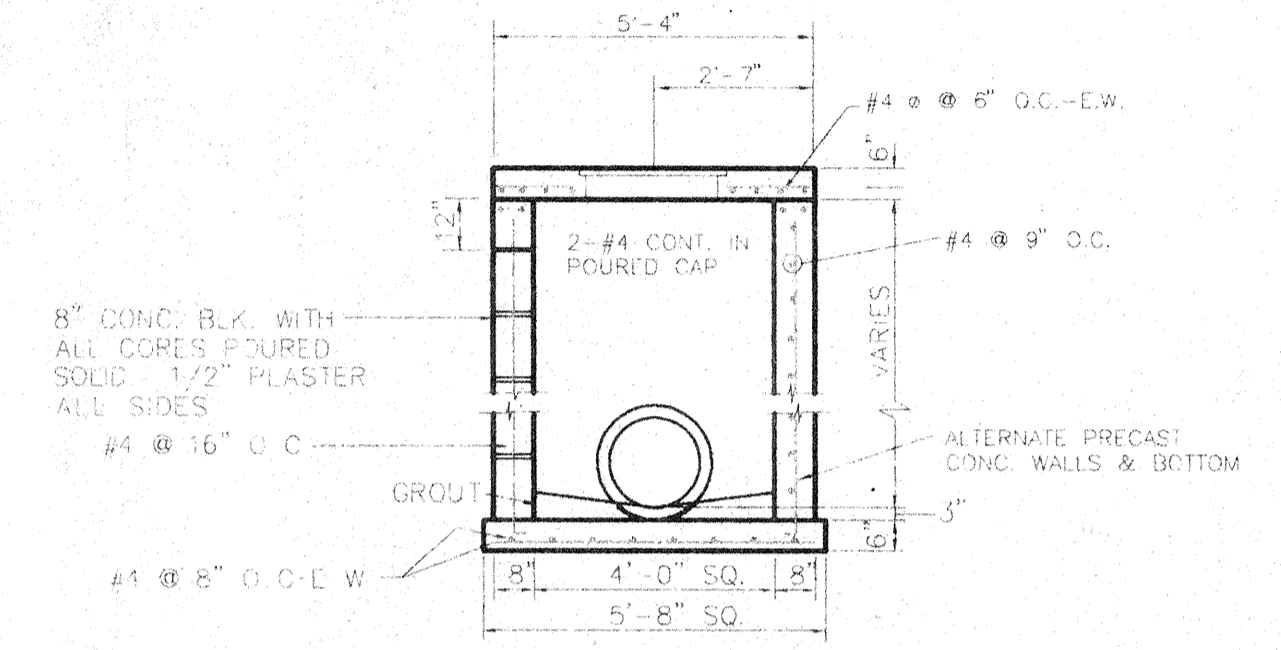
USF 5130 CURB & GUTTER INLET FRAME, GRATE, & HOOD SERIES

| GRATE NUMBER | LOAD RATING | FLOW AREA | GRATE WEIGHT | TOTAL WEIGHT |
|--------------|-------------|-----------|--------------|--------------|
| 6016 | HEAVY DUTY | 265 | 155 | 565 |

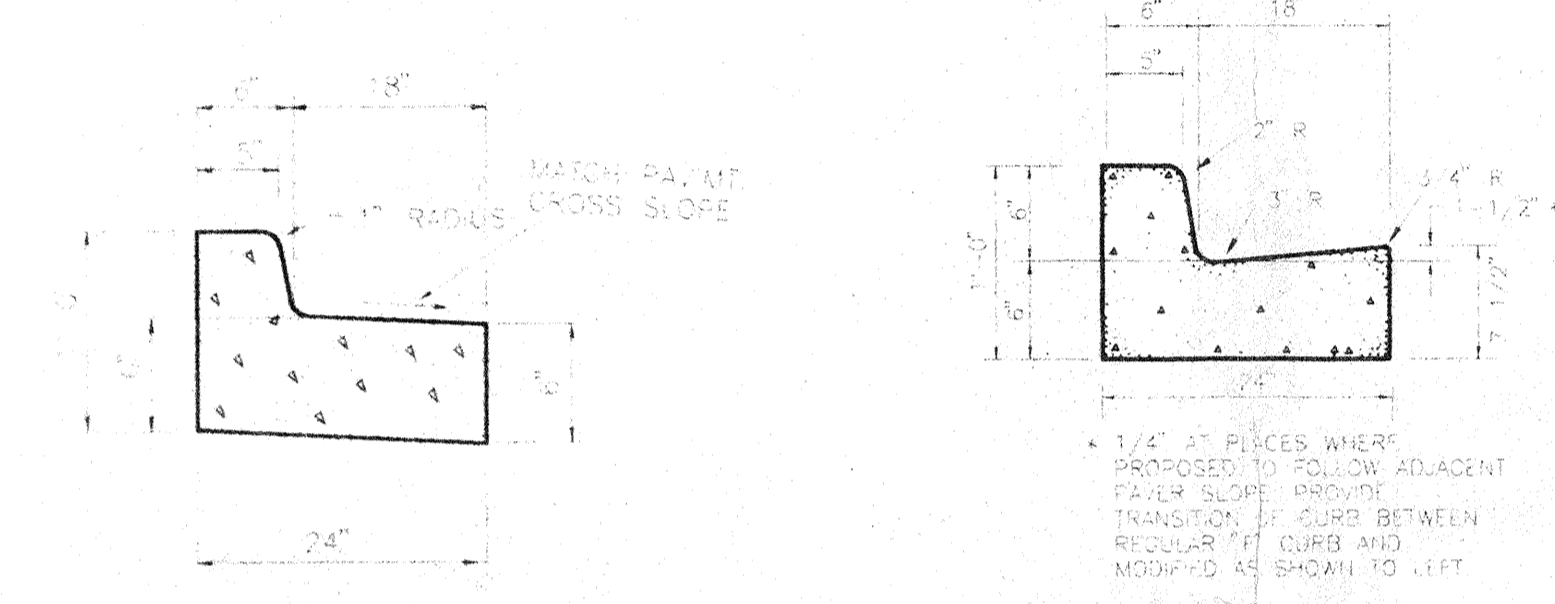
TYPE "F" CURB INLET
TYPE "D" BOX
 N.T.S.



PLAN - COVER REMOVED

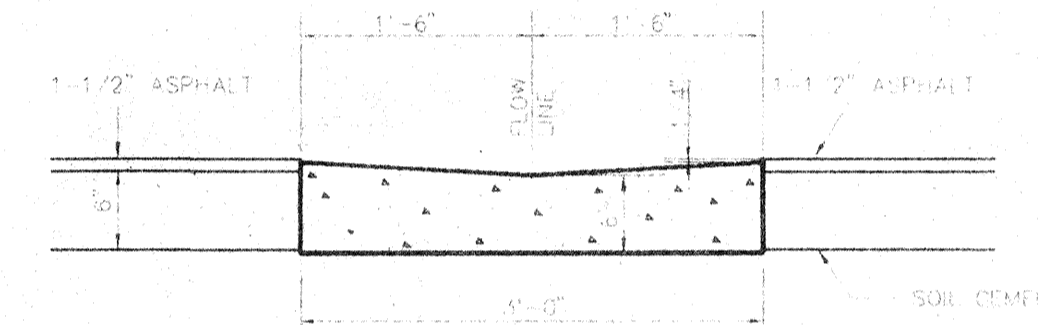


SECTION
CATCH BASIN
 N.T.S.

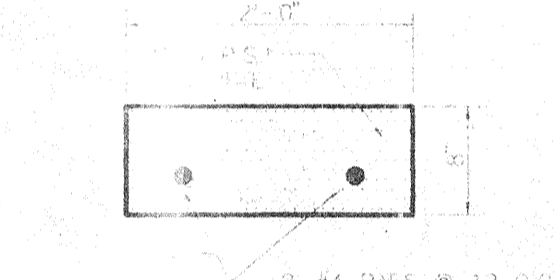


TYPE "F" CURB MODIFIED
 N.T.S.

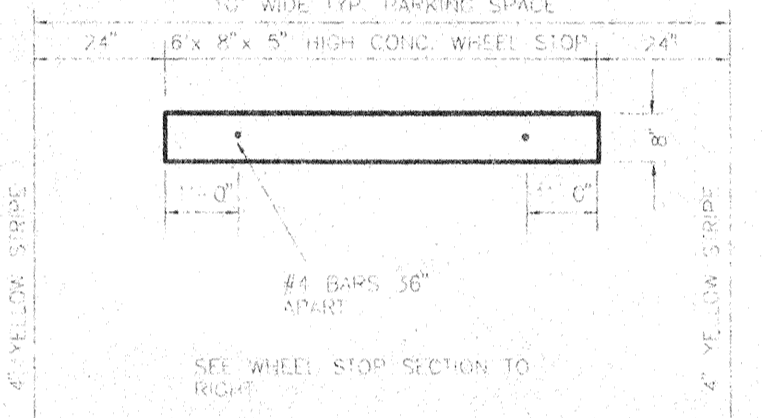
TYPE "F" CURB
 N.T.S.



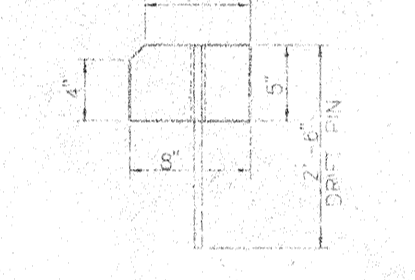
3' VALLEY GUTTER
 N.T.S.



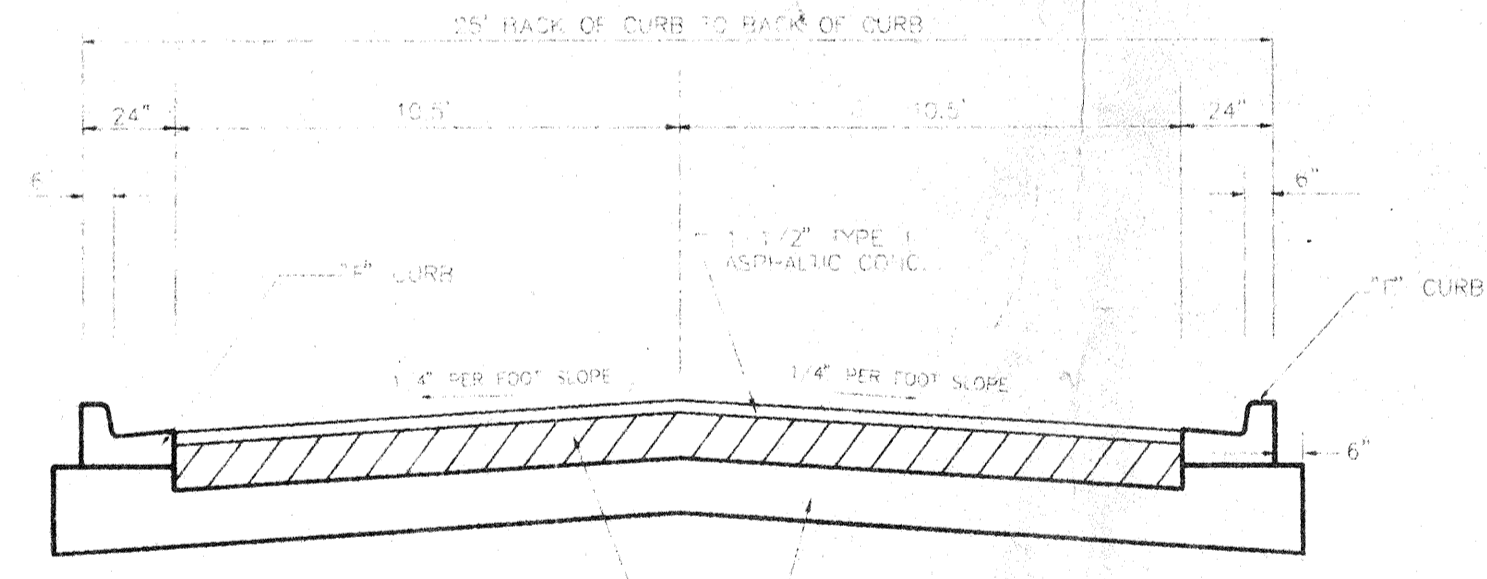
RIBBON CURB DETAIL
 N.T.S.



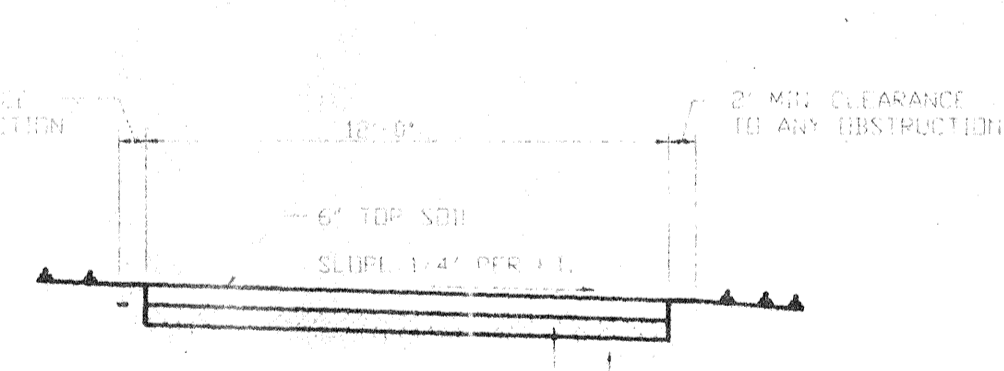
CONCRETE WHEEL STOP
 N.T.S.



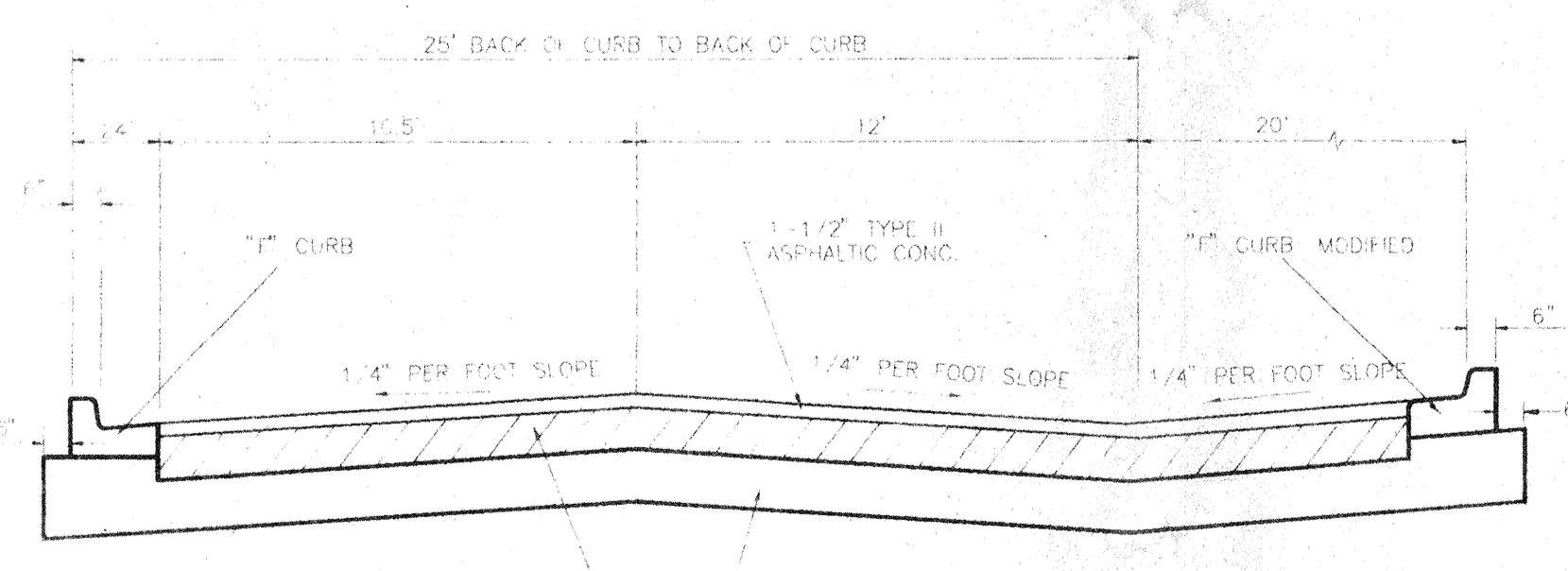
WHEEL STOP SECTION
 N.T.S.



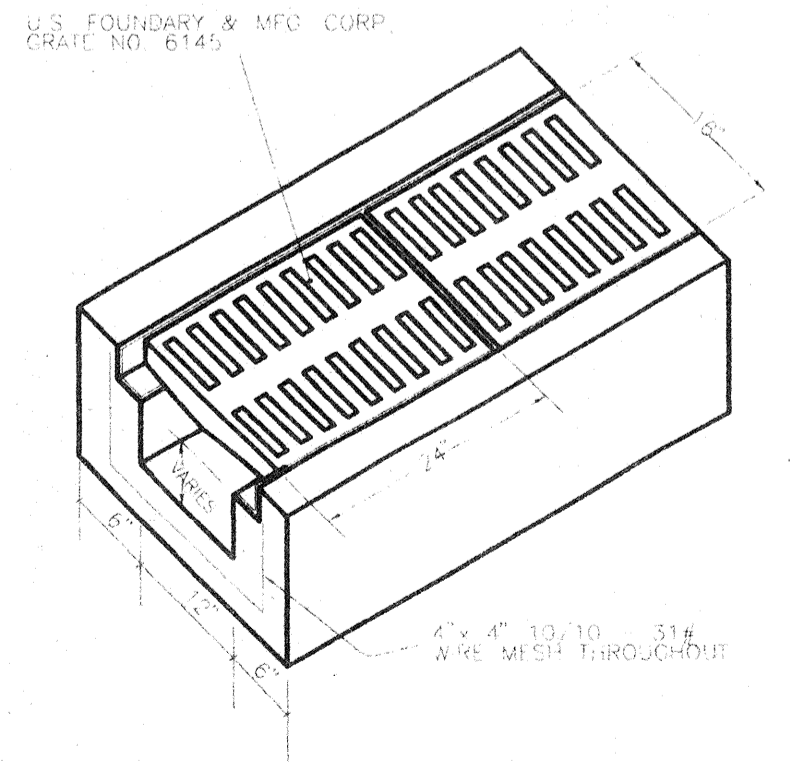
TYPICAL ROADWAY SECTION
 N.T.S.



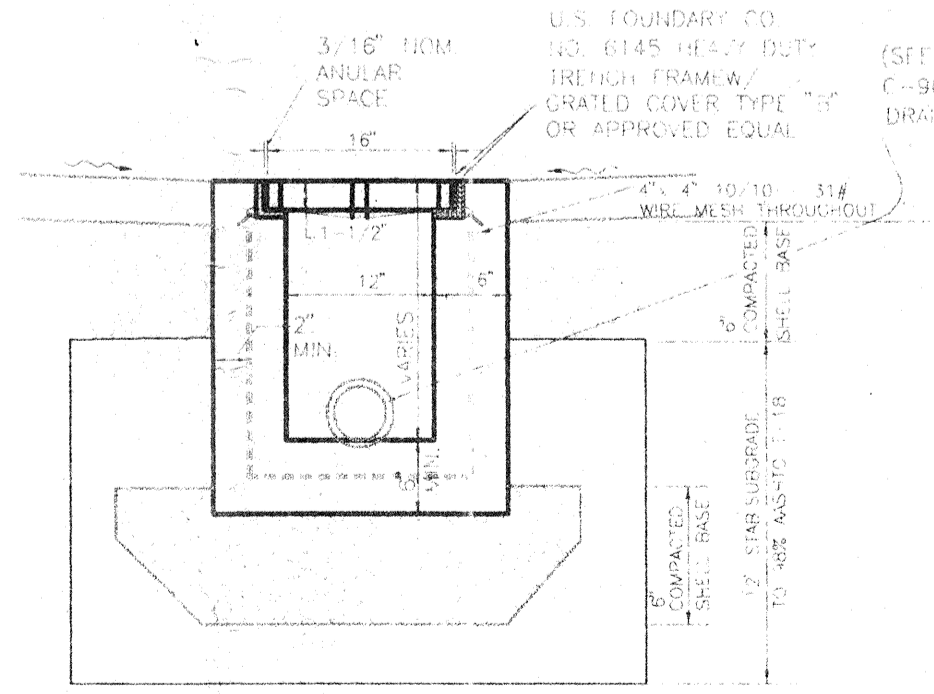
TYPICAL SECTION OF 12' EMERGENCY VEHICLE ACCESS DRIVE
 N.T.S.



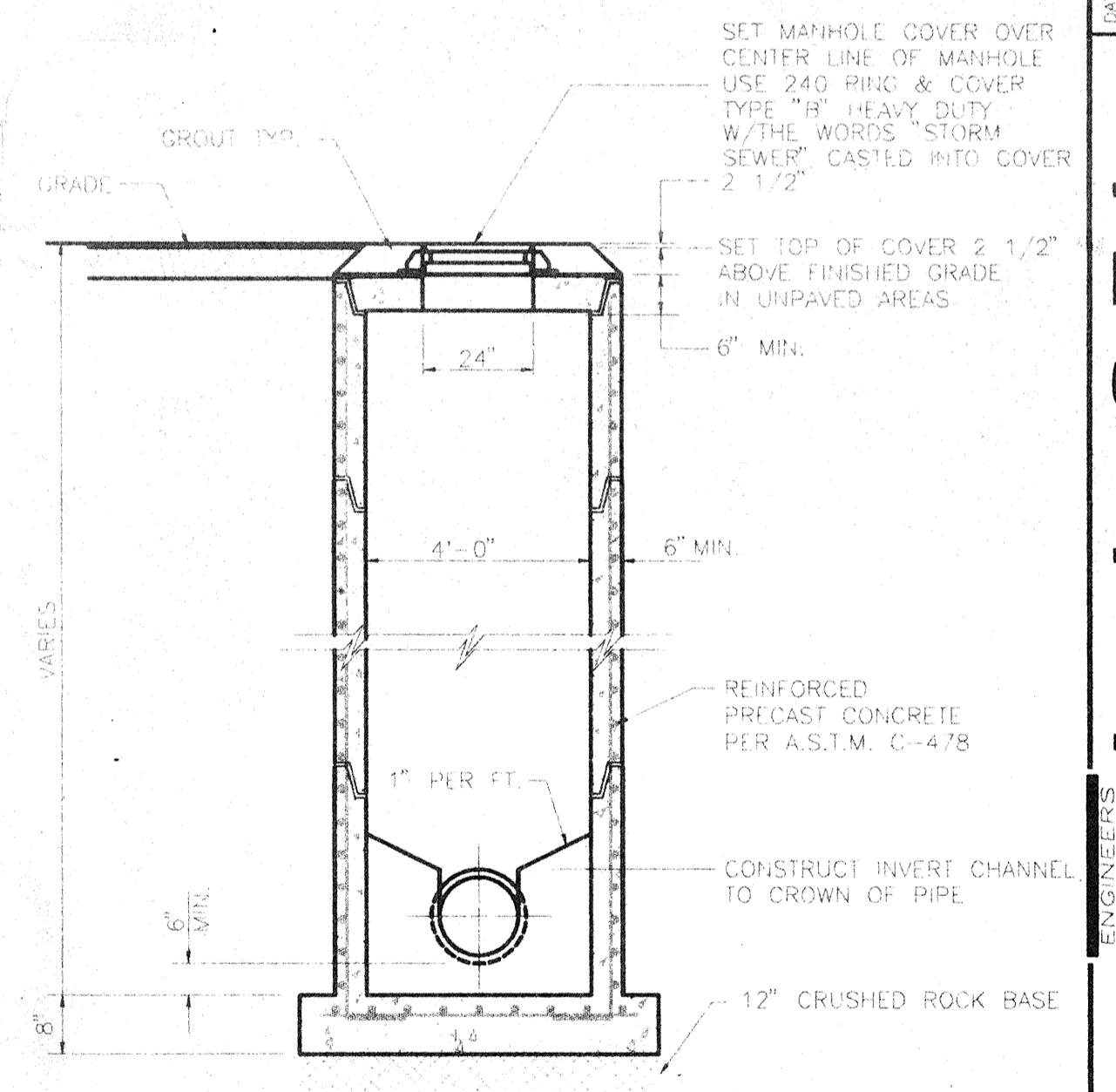
TYPICAL ROADWAY SECTION & PARKING SECTION
 N.T.S.



ISOMETRIC VIEW TRENCH DRAIN
 N.T.S.



TRENCH DRAIN SECTION
 N.T.S.

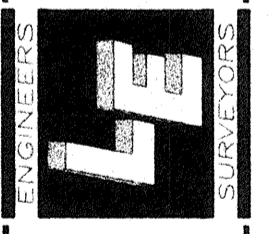


PRECAST CONCRETE STORM SEWER MANHOLE
 N.T.S.

| DATE | DESCRIPTION |
|----------|-------------|
| 07/21/04 | REVISED |

| DATE | SCALE | NONE | DESIGN | STAFF | DRWN | CHKD | APPROVD |
|---------|-------|------|--------|-------|------|------|---------|
| 4/15/04 | NONE | | | | | | |

Landry & Esber
 ENGINEERS - SURVEYORS
 130 N. Tomlinson Trail, Suite 301 Sarasota, Florida 34236
 (813)955-6004 FAX (813)955-7501



APPROVED: _____
 ENGINEER OF RECORD DATE _____
 NOT ISSUED FOR CONSTRUCTION

PROJECT NO. A00130
 SHEET NO. C-7