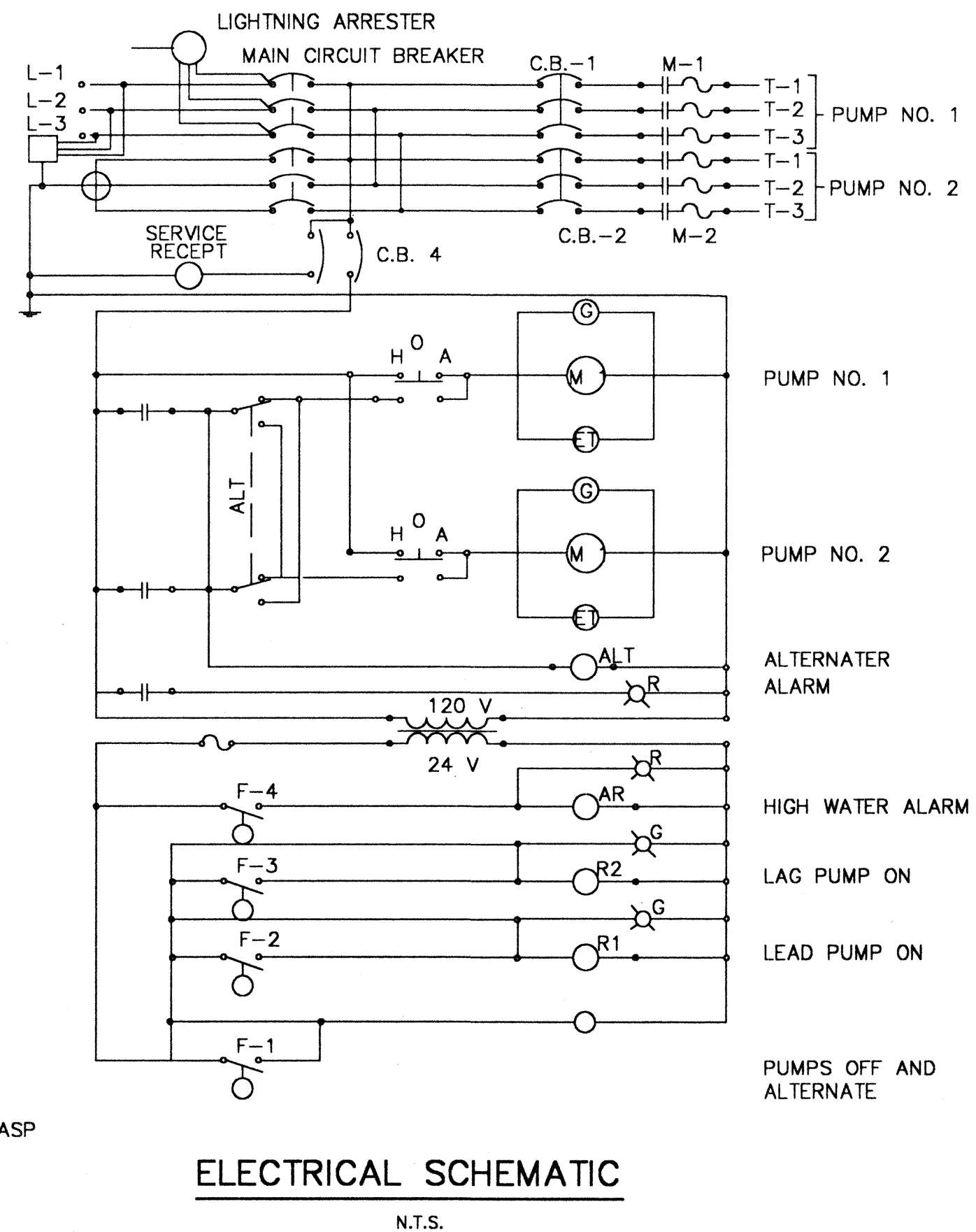
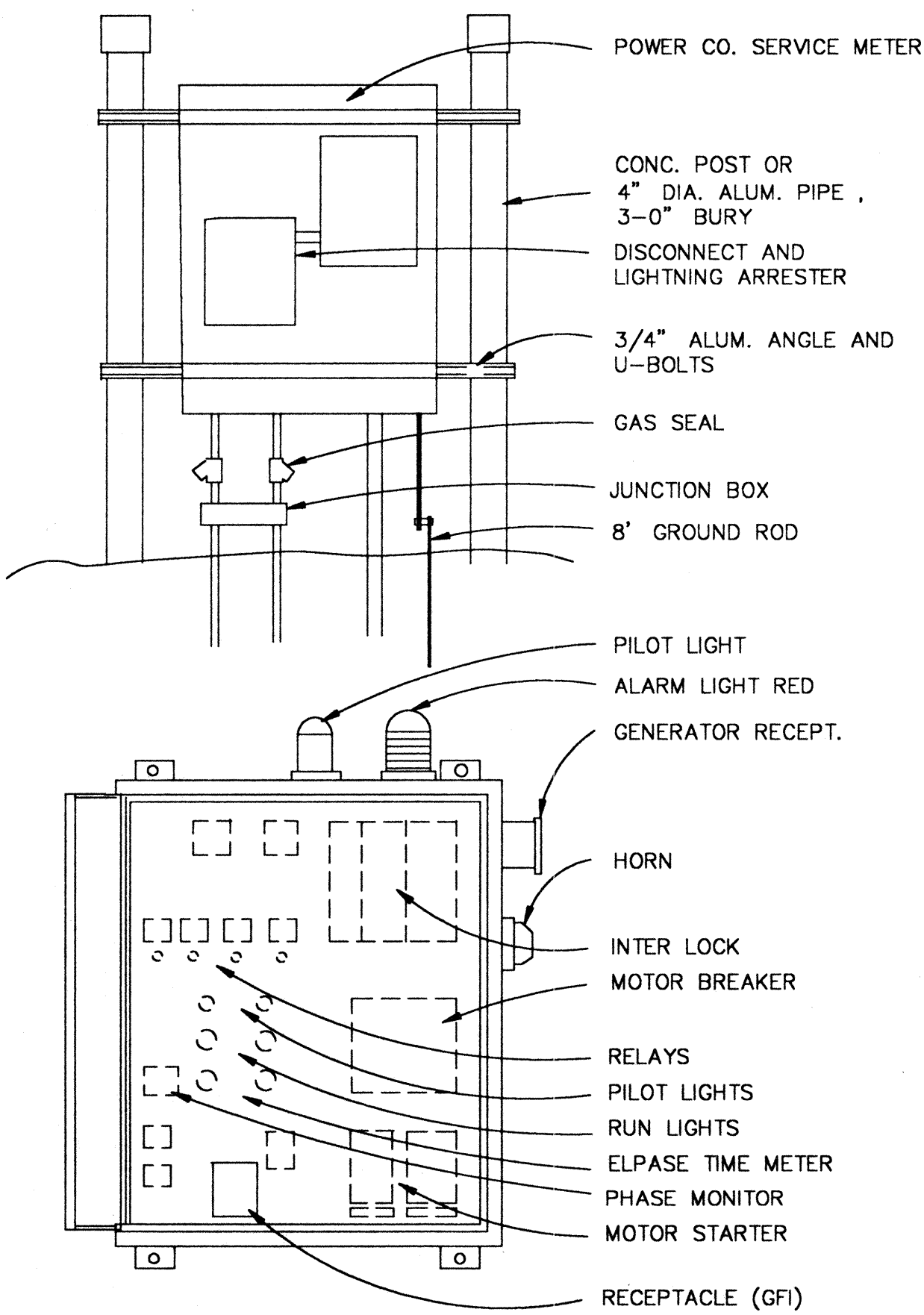
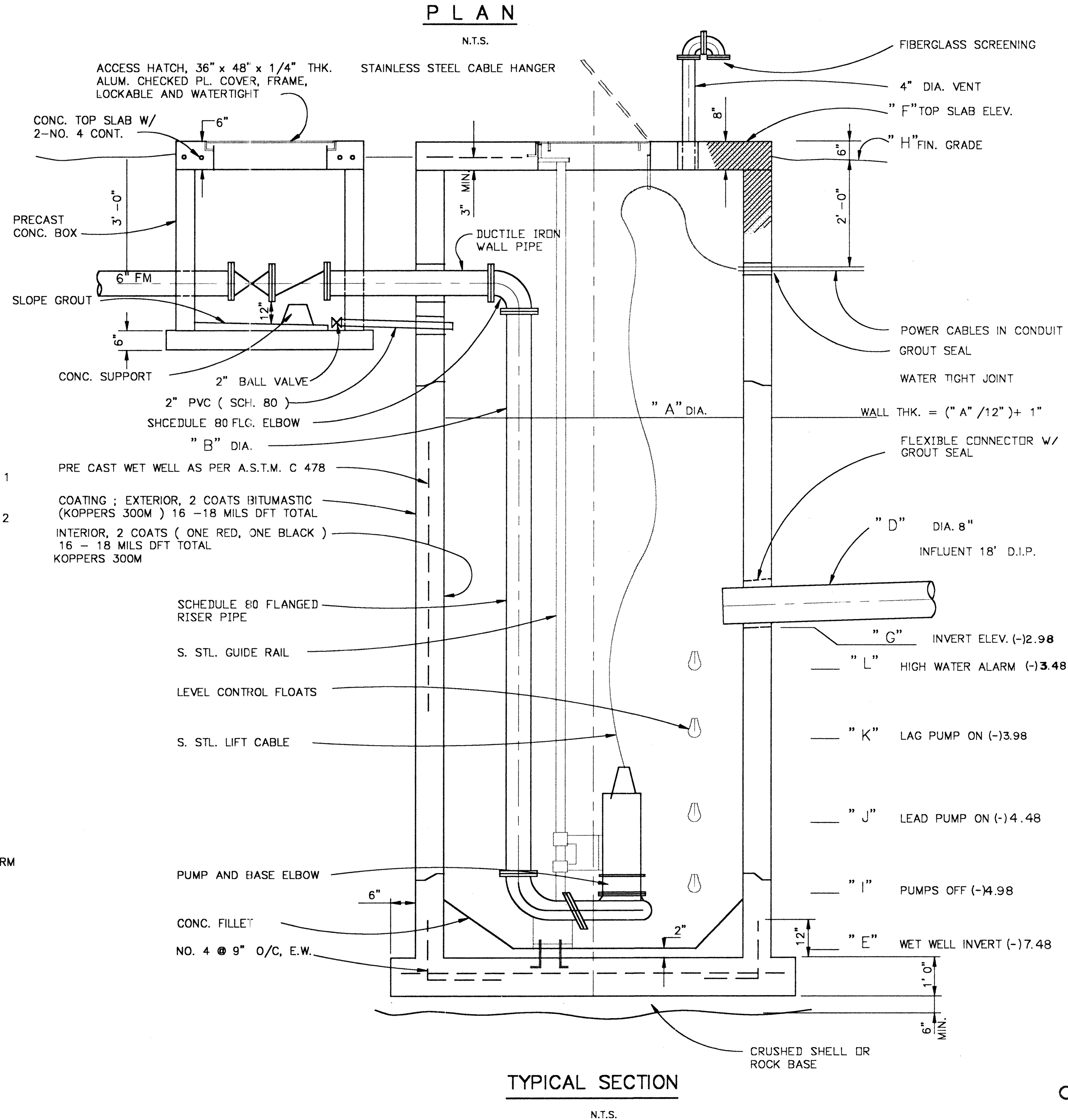
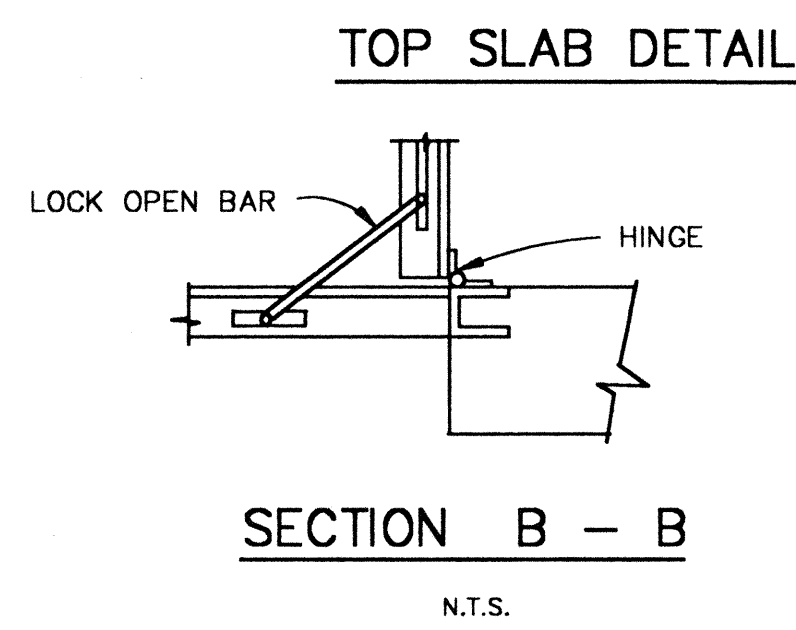
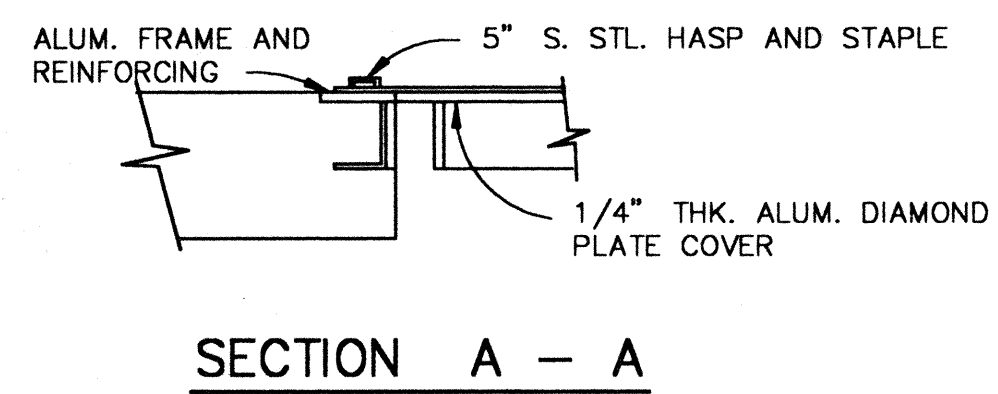


SET PUMP IN FIELD IN PROPER RELATION TO COVER TO INSURE ACCURATE ALIGNMENT OF GUIDE RAILS ANCHOR PUMP DISCHARGE CONNECTION TO SUMP FLOOR WITH APPROPRIATE EXPANSION SHIELDS AND S.STL. BOLTS

| LIFT STATION SCHEDULE | |
|--------------------------------|--------------|
| DESCRIPTION | |
| "A" WET WELL DIAMETER | 72" |
| "B" DISCHARGE PIPE DIAMETER | 6" |
| "C" FORCE MAIN DIAMETER | 6" |
| "D" INFLUENT PIPE DIAMETER | 8" |
| "E" WET WELL INVERT ELEV. | -7.48 |
| "F" TOP SLAB ELEV. | 9.00 ± |
| "G" INFLUENT PIPE INVERT ELEV. | -2.98 |
| "H" GRADE ELEV. | 8.5 ± |
| "I" PUMP OFF ELEV. | -4.98 |
| "J" LEAD PUMP ON ELEV. | -4.48 |
| "K" LAG PUMP ON ELEV. | -3.98 |
| "L" HIGH WATER ALARM ELEV. | -3.48 |
| PUMP CAPACITY (G.P.M.) | 150 GPM |
| TOTAL DYNAMIC HEAD (FEET) | 15' T.D.H. |
| PUMP SIZE / IMPELLER | HYDR. S4N |
| ELECTRIC MOTOR H.P. | 2 HP |
| ELECTRIC MOTOR SPEED | 1750 RPM |
| ELECTRIC MOTOR VOLTAGE | 208V-3 PHASE |



CONTROL PANEL DETAIL

- NOTES**
- CONTROL CABINET IS NEMA 3R S.STL. WITH GASKETED DOOR, PADLOCK HASP INTERNAL DEAD FRONT SAFETY DOOR .
 - ITEMS SHOWN DASHED ARE MOUNTED ON REAR SUBPANEL BEHIND DEADFRONT SAFETY DOOR .

ELECTRICAL SCHEMATIC

N.T.S.

TYPICAL SECTION

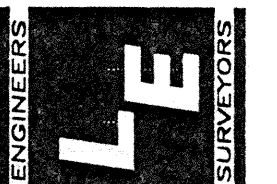
N.T.S.

CONSTRUCTION PLANS - PH. 1

CONSTRUCTION PLANS - PH. 1
GRAND BAY
 ARVIDA / JMB PARTNERS
 LIFT STATION DETAILS

| DATE | DESCRIPTION |
|--------------------------|-------------|
| 5/4/93 <td>AS NOTED</td> | AS NOTED |
| | DESIGN |
| | STAFF |
| | DATE |
| | SCALE |
| | DATE |
| | SCALE |
| | DATE |
| | SCALE |

Landry & Esber
 ENGINEERS SURVEYORS
 130 N. Miami Trill, Suite 301 Sarasota, Florida 34236
 (813)955-6004 FAX (813)955-7501



APPROVED: *[Signature]* DATE: 6/18/93
 PROJECT NO: A00101
 SHEET NO: 11
 NOT ISSUED FOR CONSTRUCTION

FILE: A010101.DWG