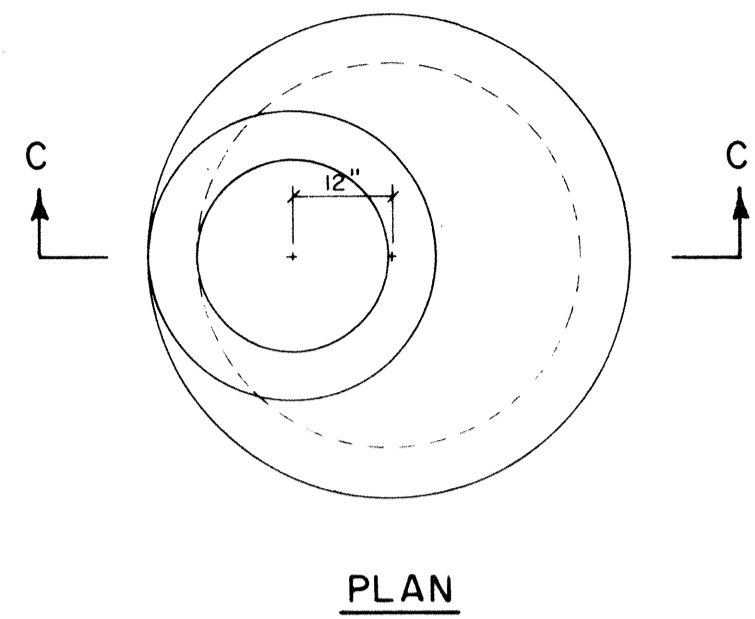
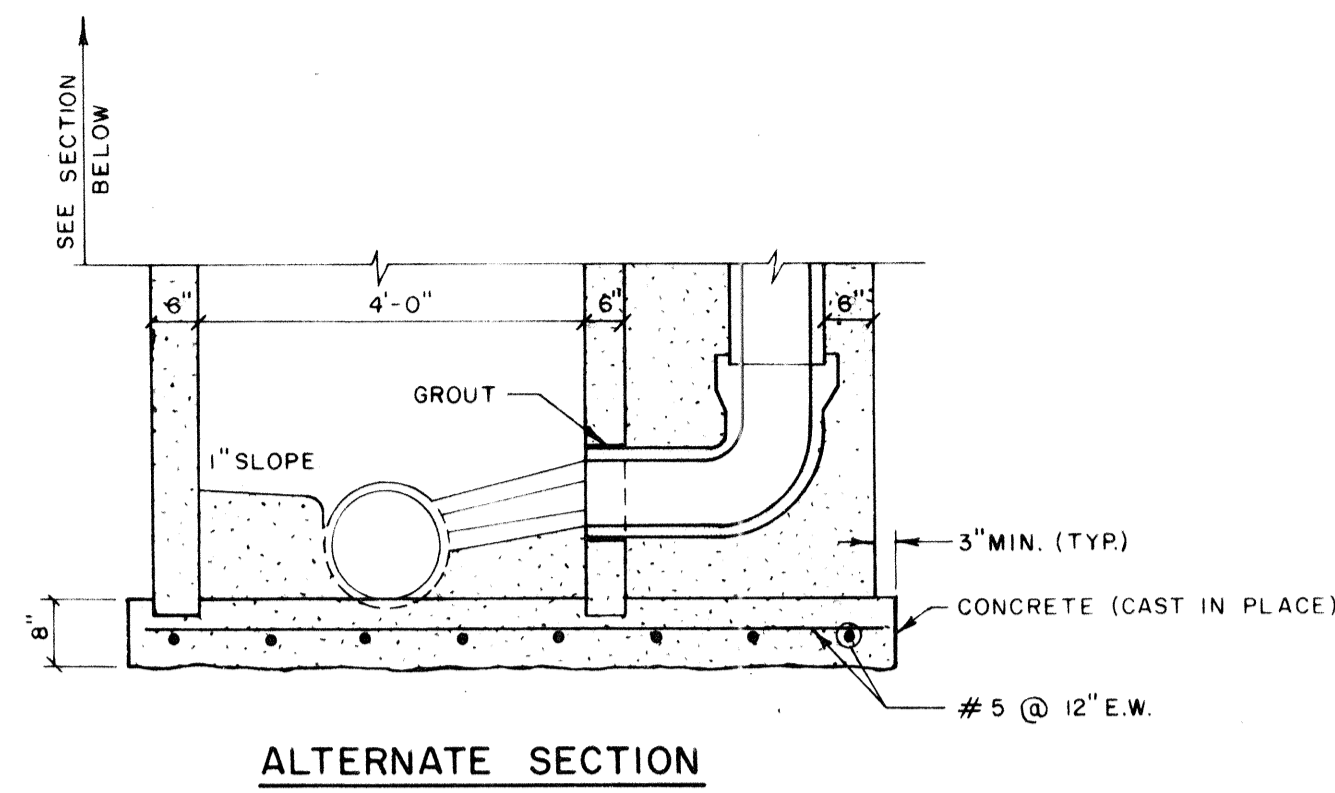


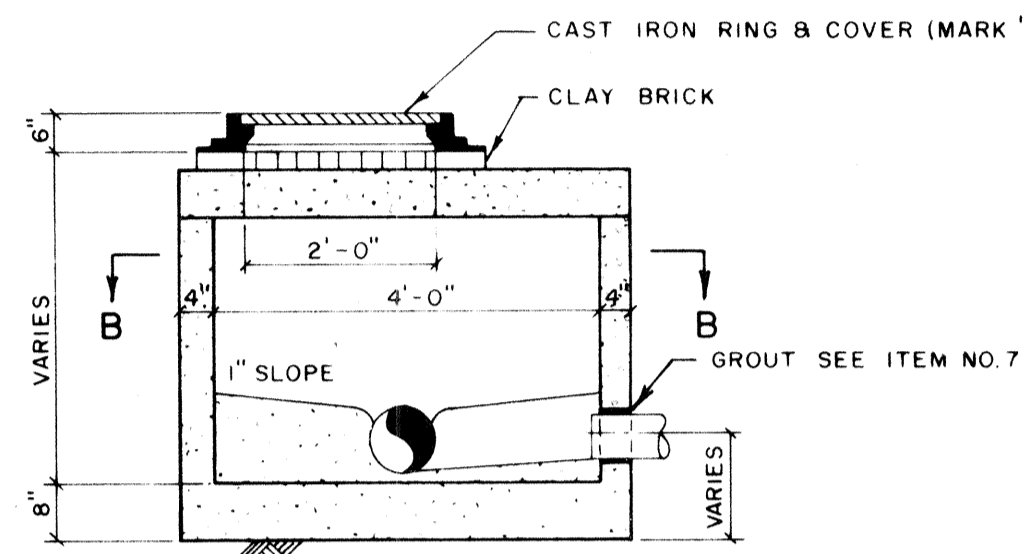
PLAN



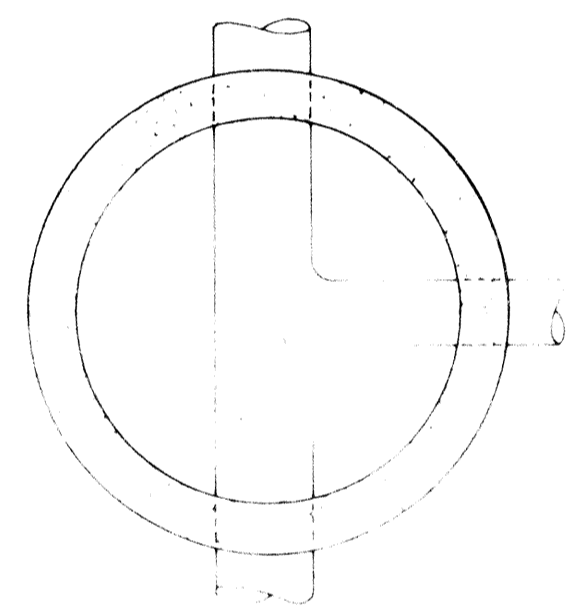
PLAN



ALTERNATE SECTION

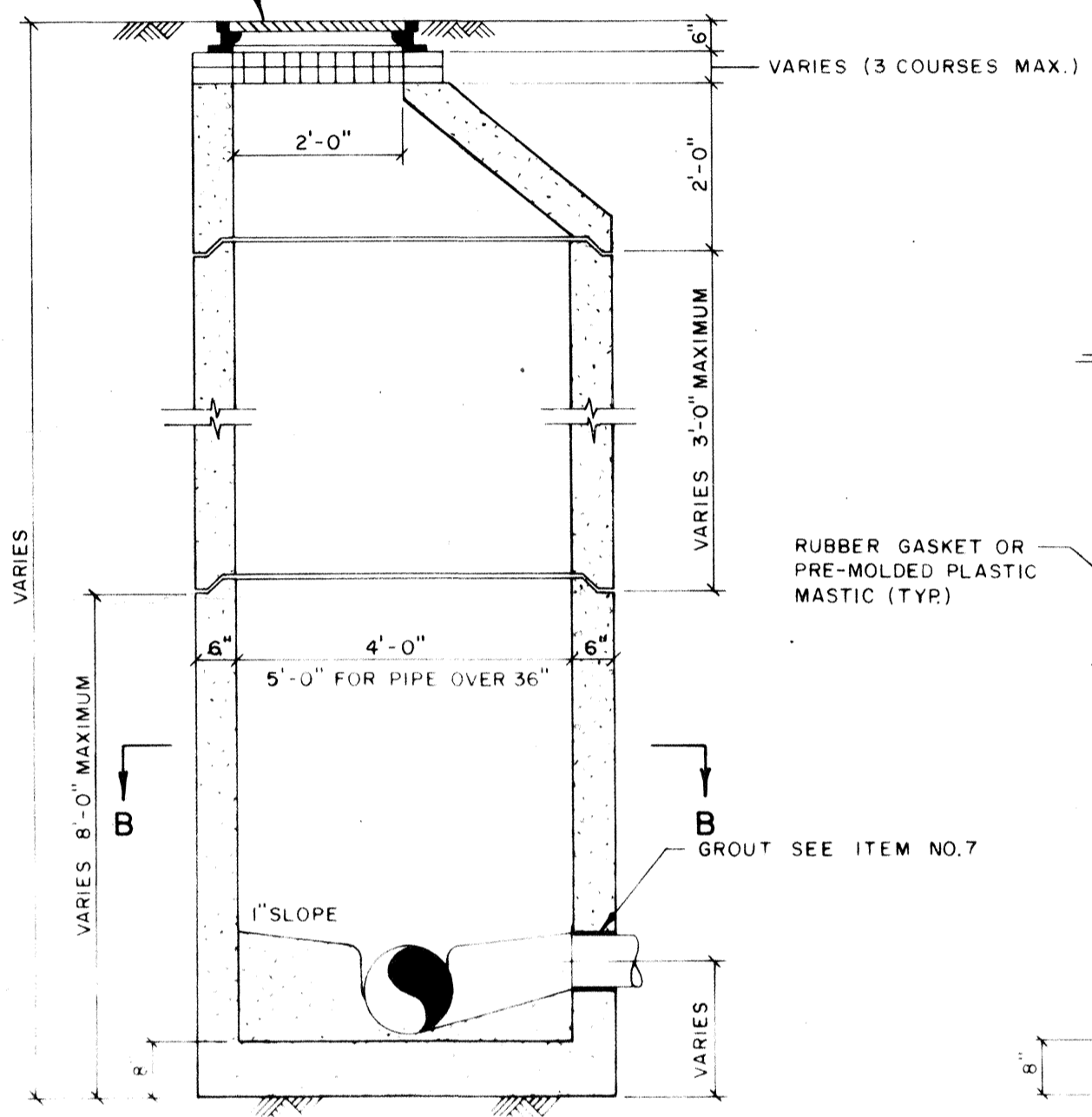


SECTION A-A



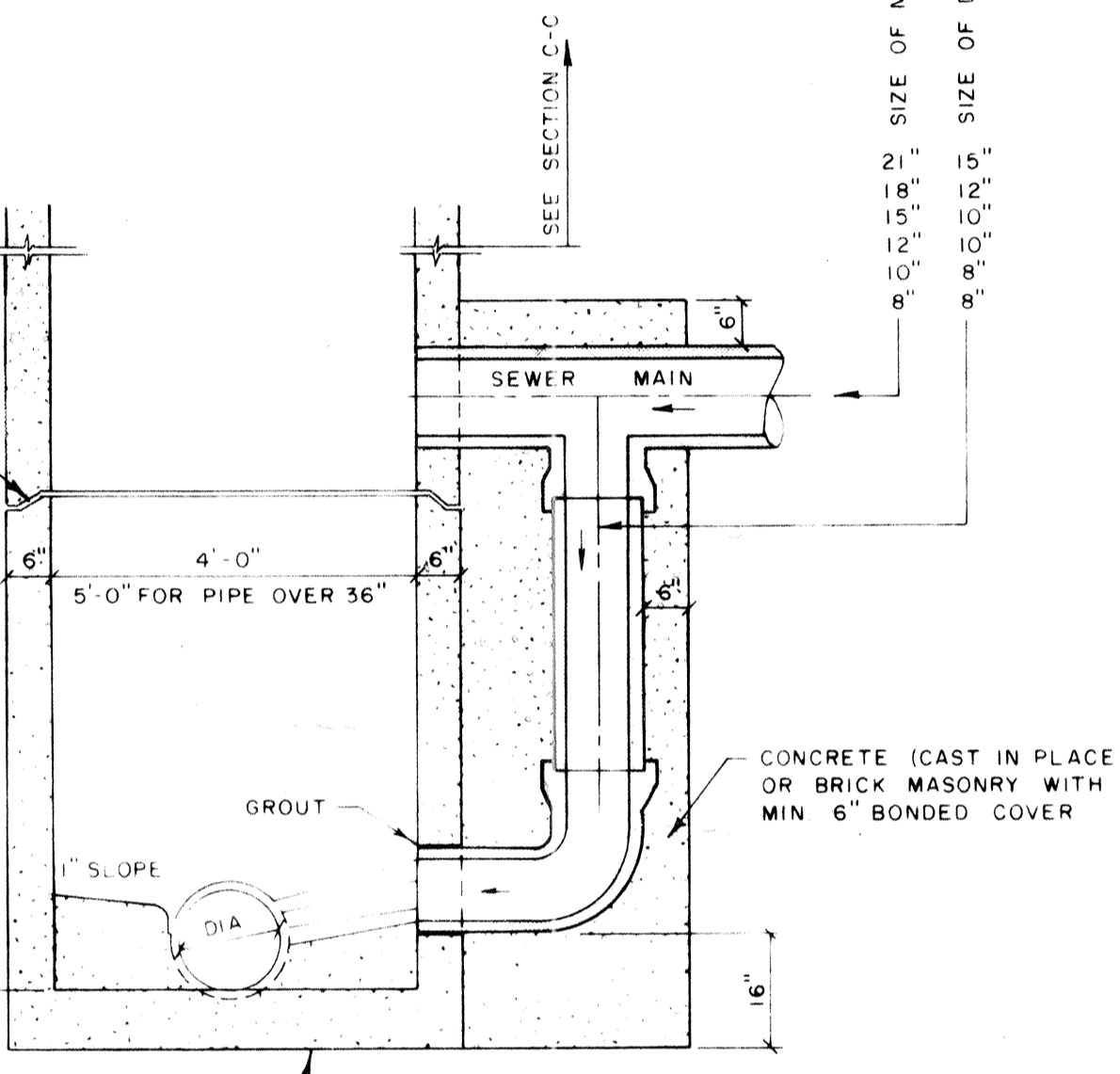
SECTION B-B

FOR DEPTHS 5'-0" & LESS
SCALE 1/2" = 1'-0"



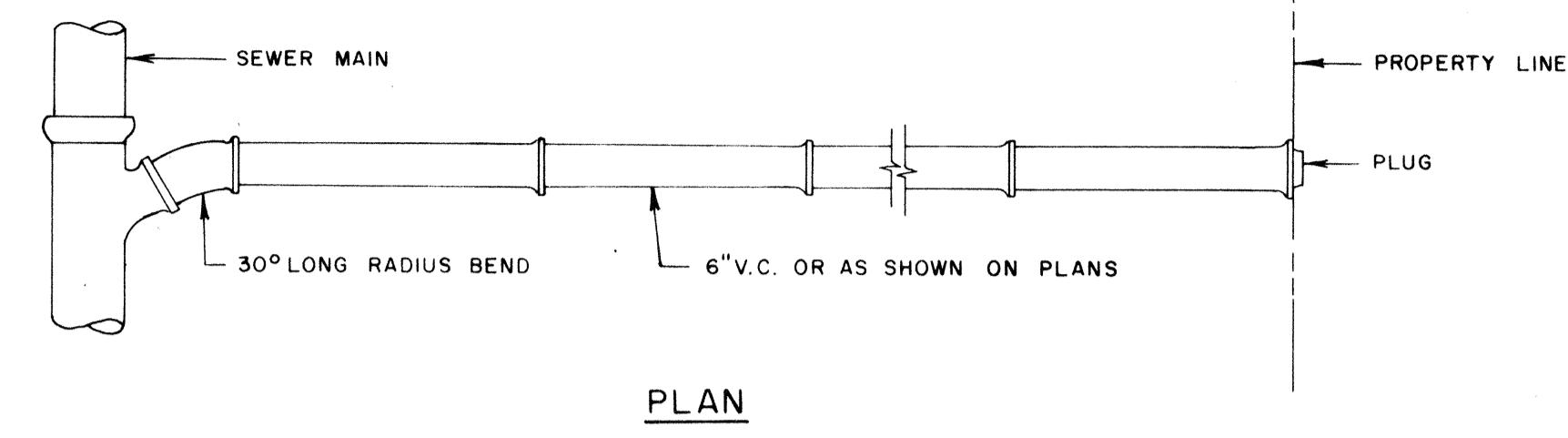
SECTION C-C

FOR DEPTHS OVER 5'-0"
SCALE 1/2" = 1'-0"

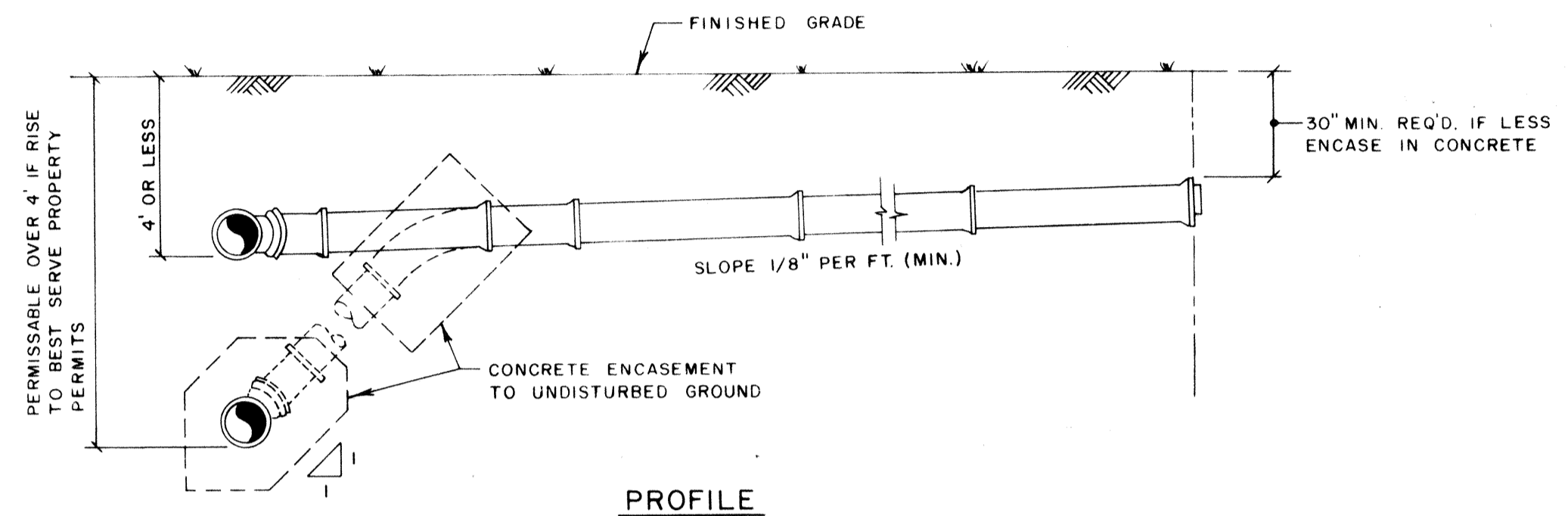


SECTION

DROP MANHOLE
SCALE 1/2" = 1'-0"

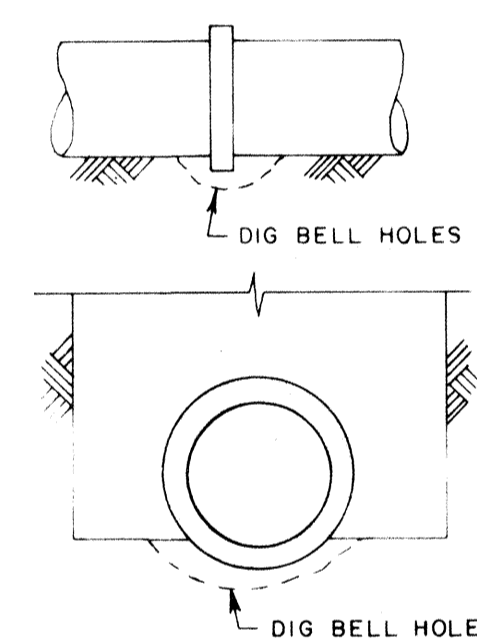


PLAN

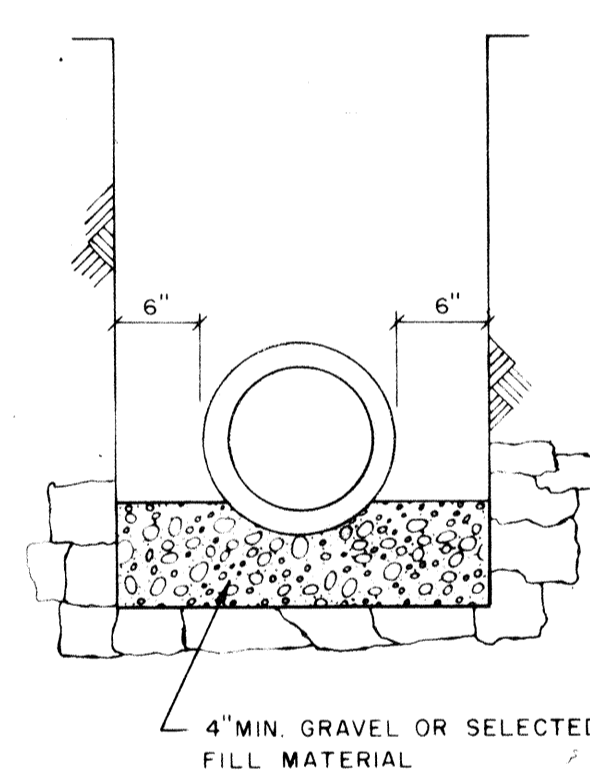


PROFILE

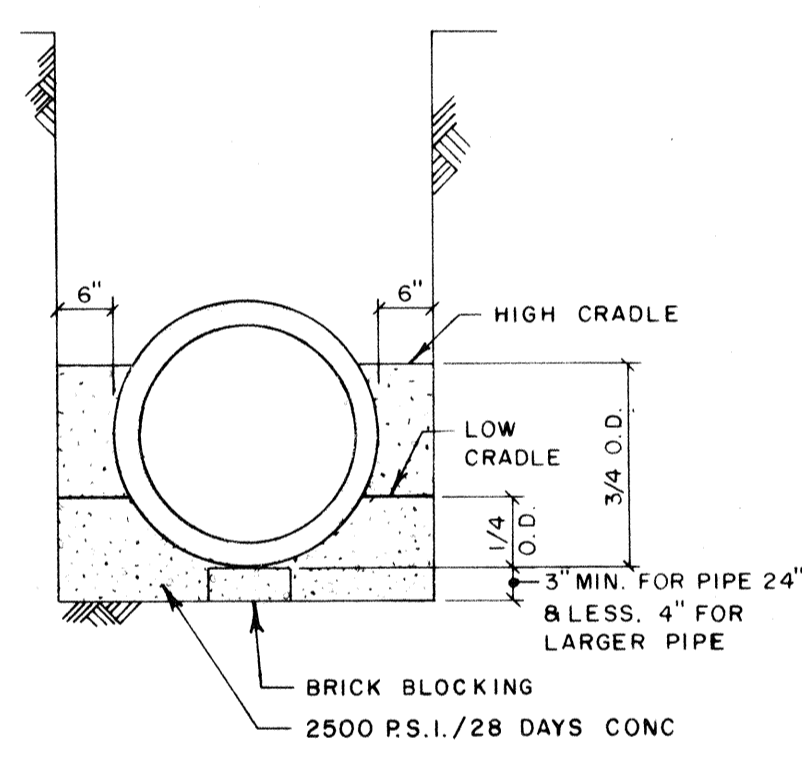
TYPICAL SERVICE CONNECTION
NO SCALE



TRENCH IN EARTH



TRENCH IN ROCK



CONCRETE CRADLES

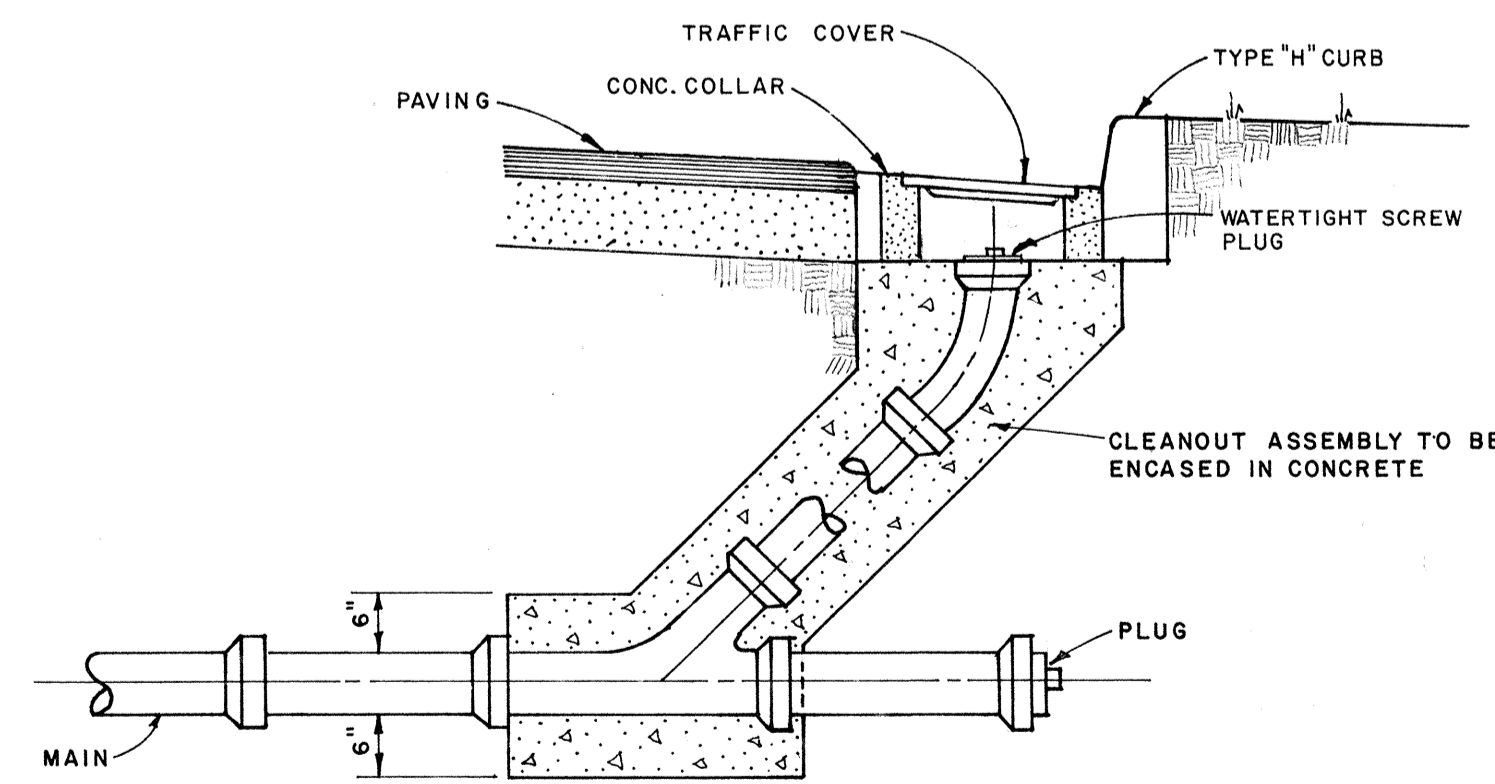
TYPICAL EXCAVATION & PIPE SETTINGS
NO SCALE

MANHOLE SPECIFICATIONS:

1. MANHOLES SHALL COMPLY WITH SPECIFICATION C-478, LATEST REVISION, "PRECAST REINFORCED CONCRETE MANHOLE SECTIONS."
2. CONCRETE SHALL BE 4,000 P.S.I./28 DAY MINIMUM STRENGTH, WITH TYPE X CEMENT.
3. HEAVY DUTY WATERPROOF MANHOLE FRAME AND COVER (7' 2" HIGH) SERIES R-1916-D 370 LBS. WITH GASKET SEAL AND 4 COVER BOLTS, AS MANUFACTURED BY NEENAH FOUNDRY COMPANY, NEENAH, WISCONSIN, OR APPROVED EQUAL.
4. REINFORCING PER ASTM SPEC C-478, LATEST REV.
5. LEVELING BRICKS TO BE CLAY; MORTAR TO BE 2 PARTS CLEAN SAND AND 1 PART CEMENT WITH NO MORE THAN 1/4 PART HYDRATED LIME, WITH JOINTS FULL & STRUCK FLUSH.
6. NO STEPS SHALL BE USED.
7. COMPLETELY FILL SPACE BETWEEN PIPES AND MANHOLE WALL WITH CEMENT MORTAR AFTER PIPE IS SET WITH 15LB. EMBECO PER 100LB. CEMENT.

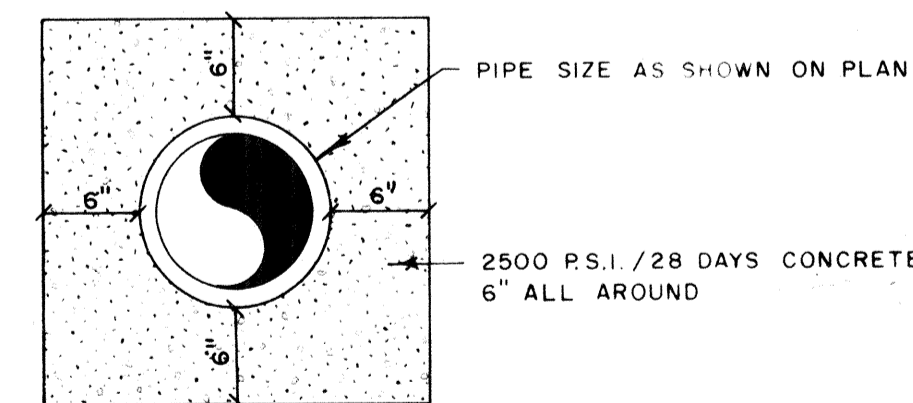
GENERAL NOTES:

1. WHERE WATER & WASTEWATER MAINS CROSS WITH LESS THAN 18" VERTICAL CLEARANCE, THE WASTEWATER PIPE SHALL BE OF EITHER CAST IRON OR CONCRETE ENCASED VITRIFIED CLAY, (20" MIN.) CENTERED ON THE POINT OF CROSSING.
2. PARALLEL WATER & WASTEWATER MAINS SHALL MAINTAIN A HORIZONTAL SEPARATION OF AT LEAST 10' WHERE PRACTICAL.



CLEANOUT DETAIL

NO SCALE



CONCRETE ENCASEMENT

NO SCALE

BENNETT & BISHOP ENGINEERS & SURVEYORS SARASOTA FLORIDA		APPROVED BY <i>William H. Bishop</i>	
DATE	SCALE	DESIGN	DESCRIPTION
9-4-80	AS SHOWN	W.F.B.	REVISED CLEANOUT DETAIL
7-23-81		R.A.B.	CHANGED MULTILINE TO ADDED C.D. DETAIL
7-7-81		CHECK	
03/13/83		APPROVED	
ARVIDA CORPORATION FAIRWAY BAY		SANITARY SEWER DETAILS	
DRWG. NO. 191-376			