

CONSTRUCTION PLANS FOR EMERALD POINTE SOUTH

EMERALD POINTE DEVELOPMENT CORP.
4243D NORTH LAKE BLVD.
PALM BEACH GARDENS, FLORIDA 33410

GENERAL NOTES

- CAUTION**
THE LOCATION OF EXISTING UTILITIES SHOWN ON THESE PLANS ARE APPROXIMATE. PRIOR TO THE COMMENCEMENT OF EXCAVATION, IT IS THE RESPONSIBILITY OF THE CONTRACTOR TO DETERMINE THE EXACT LOCATION OF UNDERGROUND UTILITIES BY CONTACTING:
TOWN OF LONGBOAT KEY UTILITIES
FLORIDA POWER & LIGHT
GENERAL TELEPHONE COMPANY OF FLORIDA
STORER, CABLE TV
FIRST CALL 1-800-227-3385 48 HOURS BEFORE YOU DIG
CANDY 1-800-282-8881 48 HOURS BEFORE YOU DIG
- RESPONSIBILITY REGRADING EXISTING UTILITIES & STRUCTURES**
THE EXISTENCE AND LOCATION OF EXISTING UNDERGROUND UTILITIES ARE NOT GUARANTEED AND SHALL BE INVESTIGATED AND VERIFIED IN THE FIELD BY THE CONTRACTOR BEFORE STARTING WORK. EXCAVATION IN THE VICINITY OF EXISTING STRUCTURES AND UTILITIES SHALL BE CAREFULLY DONE, BY HAND IF NECESSARY. THE CONTRACTOR SHALL BE HELD RESPONSIBLE FOR ANY DAMAGE TO, AND FOR MAINTENANCE AND PROTECTION OF, EXISTING UTILITIES AND STRUCTURES.
- THE CONTRACTOR SHALL BE RESPONSIBLE FOR VERIFYING THE POINT OF CONNECTION OF ALL BUILDING SERVICE LINES AT THE BUILDING, PRIOR TO INSTALLATION.**
- EROSION CONTROL DURING CONSTRUCTION**
THE CONTRACTOR SHALL TAKE ALL NECESSARY MEASURES TO PREVENT THE RUNOFF OF ERODED SOIL MATERIAL FROM LEAVING THE CONSTRUCTION SITE AND BEING DEPOSITED ON THE PROPERTY OF OTHERS OR ON PORTIONS OF THE SITE OUTSIDE THE CONSTRUCTION LIMITS.
- THE CONTRACTOR SHALL INSURE THAT ALL NECESSARY PERMITS ARE OBTAINED PRIOR TO COMMENCING ANY CONSTRUCTION ACTIVITY.**
- LAWS TO BE OBSERVED**
THE CONTRACTOR IS ASSUMED TO BE FAMILIAR WITH, AND AT ALL TIMES SHALL OBSERVE AND COMPLY WITH, ALL FEDERAL, STATE, AND LOCAL LAWS, BYLAWS, SAFETY LAWS, BUILDING AND CONSTRUCTION

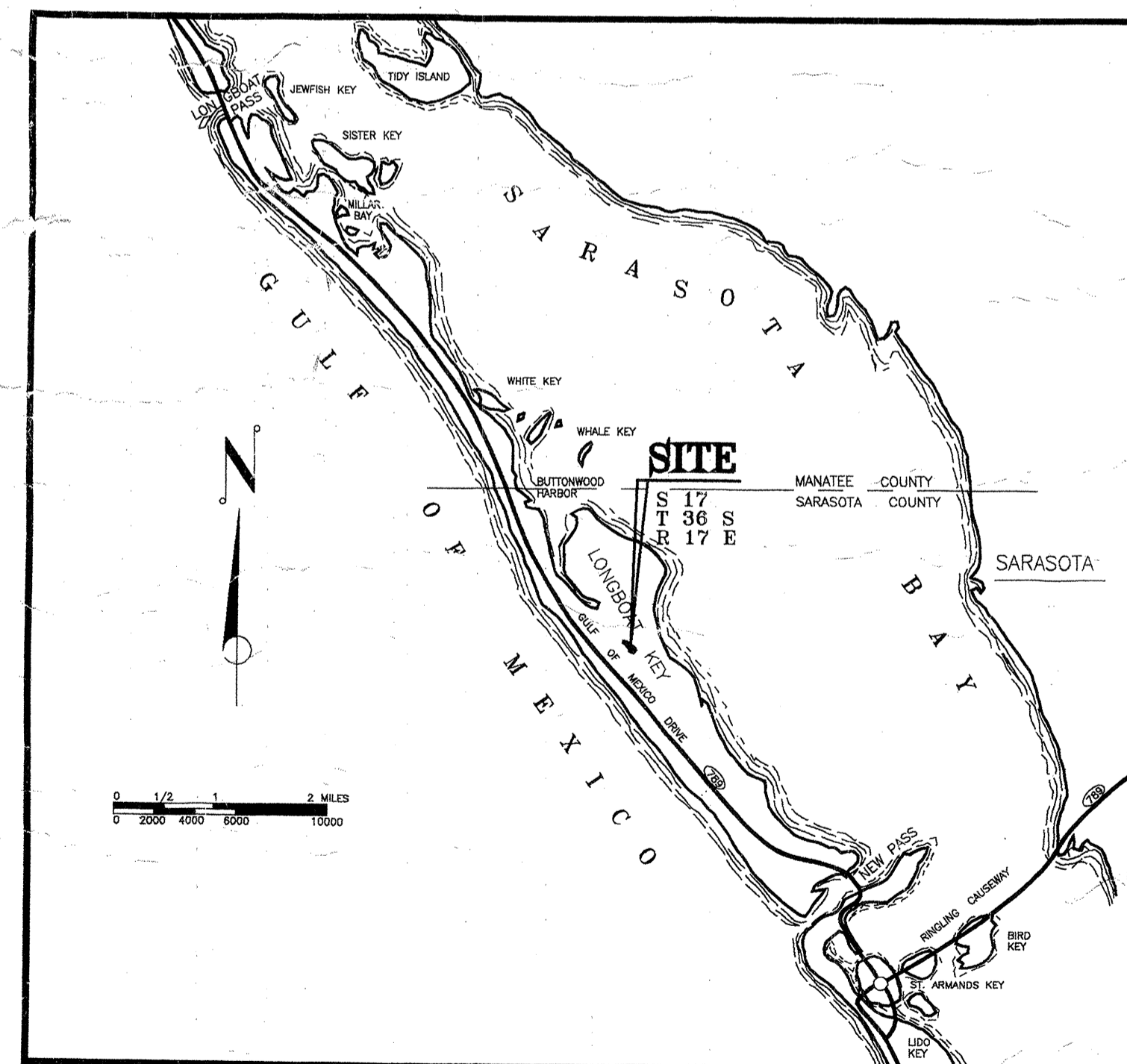
ESBER & ASSOCIATES Engineers • Surveyors

5914 Palmer Blvd. • Sarasota, FL 34232
(941)379-8831 • Fax (941)379-0556

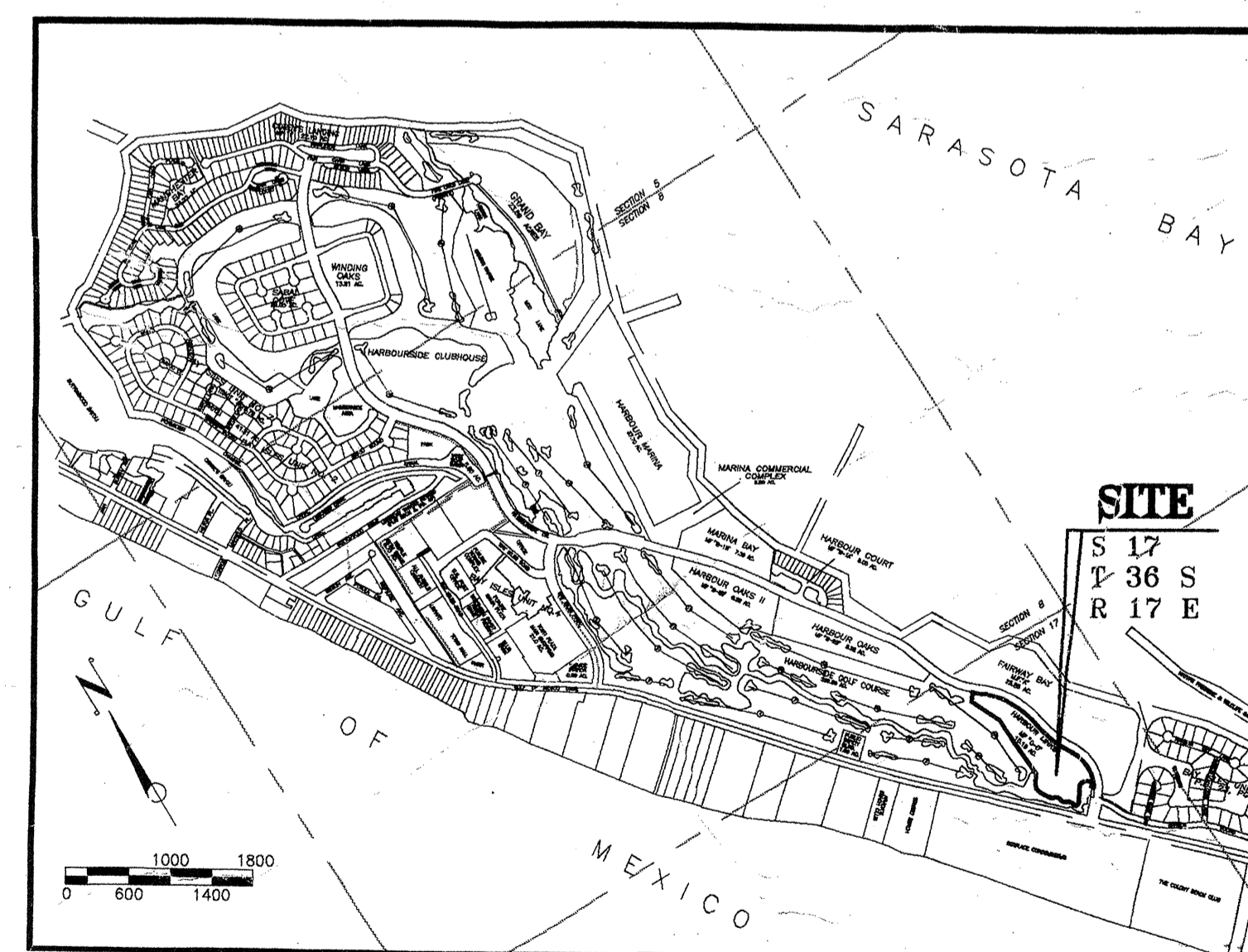
INDEX

PROJECT NO: F11906

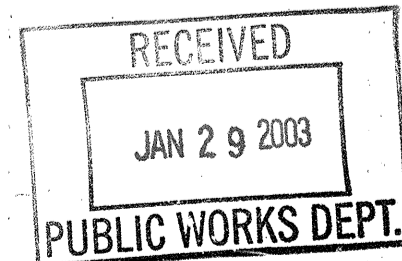
SHEET NO.	DESCRIPTION
C-1	COVER SHEET
C-2	GENERAL SITE PLAN
C-3	DETAIL GRADING & STABILIZATION PLAN
C-4	DETAIL UTILITIES PLAN
C-5	TREE PRESERVATION & LOCATION PLAN
C-6	SOIL EROSION & SEDIMENT CONTROL PLAN
C-7	PLAN & PROFILE
C-8	PAVING, GRADING & DRAINAGE DETAILS
C-9	UTILITY DETAILS
C-10	BEST MANAGEMENT PRACTICES



VICINITY MAP



LOCATION MAP



RECORD DRAWINGS
APPROVED: _____ DATE _____
ENGINEER OF RECORD: *W. A. Hough* DATE: 1/29/03

EMERALD POINTE SOUTH
CONSTRUCTION PLANS
COVER SHEET

DATE	BY	DESCRIPTION

ESBER & ASSOCIATES
Engineers • Surveyors
5914 Palmer Blvd. • Sarasota, FL 34232
(941)379-8831 • Fax (941)379-0556

APPROVED: _____ DATE _____
ENGINEER OF RECORD: _____
NOT ISSUED FOR CONSTRUCTION
PROJECT NO: F11906
SHEET NO: C-1