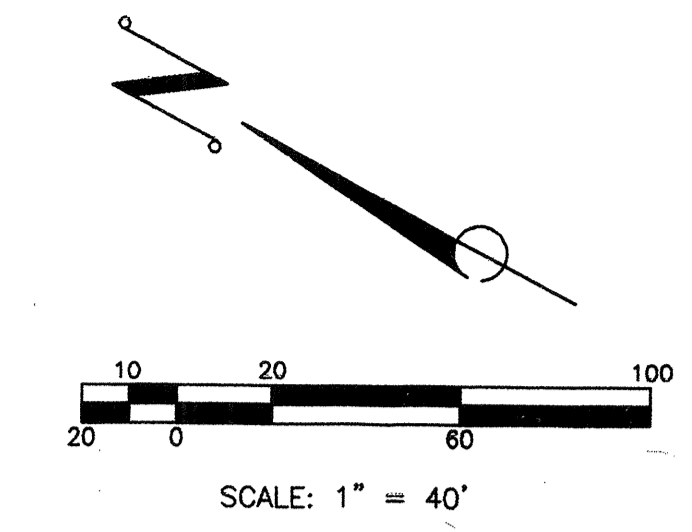
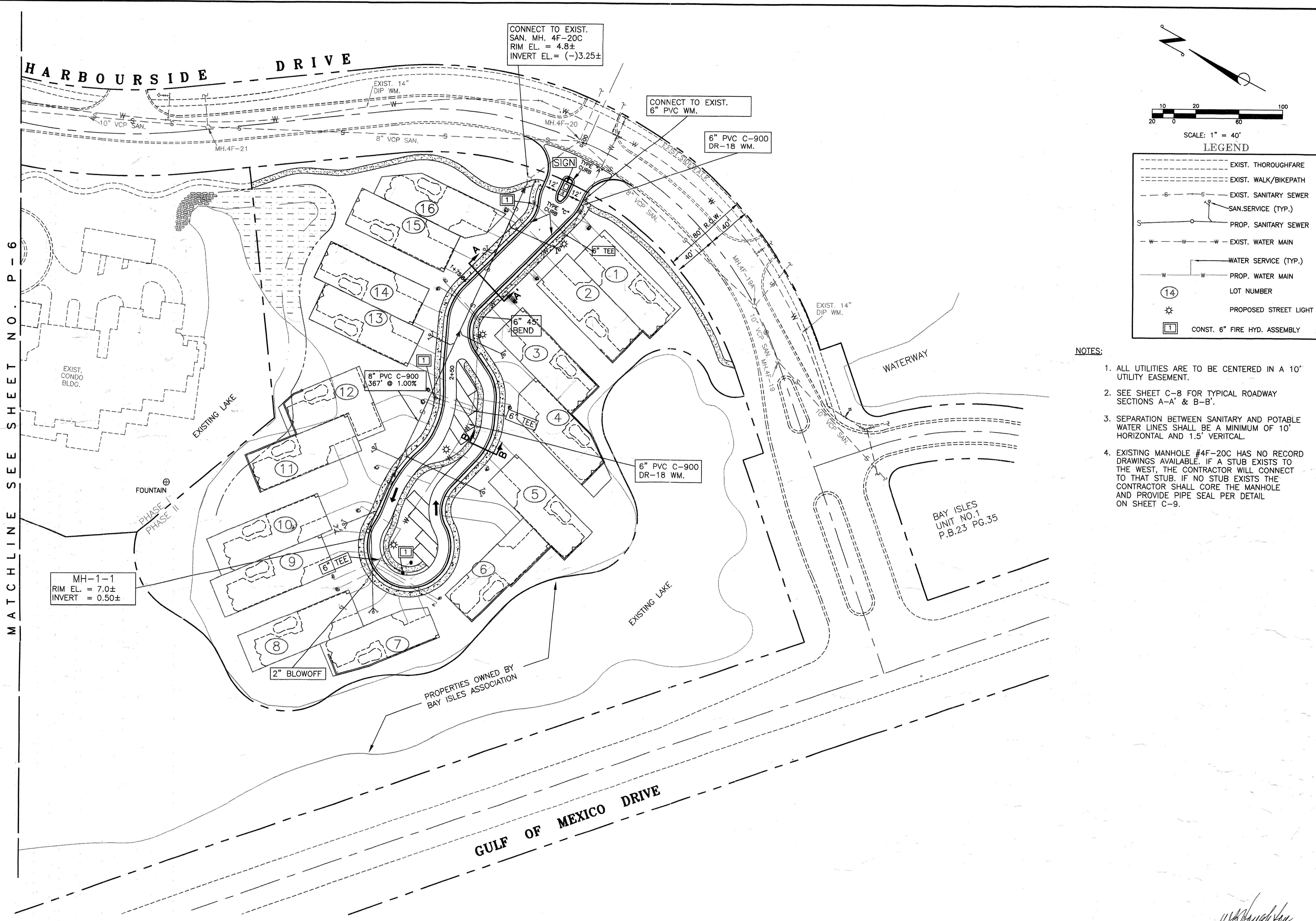


MATCHLINE SEE SHEET NO. P-6



LEGEND

	EXIST. THOROUGHFARE
	EXIST. WALK/BIKEPATH
	EXIST. SANITARY SEWER
	SAN.SERVICE (TYP.)
	PROP. SANITARY SEWER
	EXIST. WATER MAIN
	WATER SERVICE (TYP.)
	PROP. WATER MAIN
	LOT NUMBER
	PROPOSED STREET LIGHT
	CONST. 6" FIRE HYD. ASSEMBLY

- NOTES:**
- ALL UTILITIES ARE TO BE CENTERED IN A 10' UTILITY EASEMENT.
 - SEE SHEET C-8 FOR TYPICAL ROADWAY SECTIONS A-A' & B-B'.
 - SEPARATION BETWEEN SANITARY AND POTABLE WATER LINES SHALL BE A MINIMUM OF 10' HORIZONTAL AND 1.5' VERTICAL.
 - EXISTING MANHOLE #4F-20C HAS NO RECORD DRAWINGS AVAILABLE. IF A STUB EXISTS TO THE WEST, THE CONTRACTOR WILL CONNECT TO THAT STUB. IF NO STUB EXISTS THE CONTRACTOR SHALL CORE THE MANHOLE AND PROVIDE PIPE SEAL PER DETAIL ON SHEET C-9.

EMERALD POINTE SOUTH
CONSTRUCTION PLANS
DETAIL UTILITY PLAN

DATE:	7/22/98
DRAWING SCALE:	1"=40'
HORIZ.:	N/A
VERT.:	N/A
DESIGN:	DBH
CHECK:	DBH
DATE:	5/31/98
BY:	DBH
DESCRIPTION:	REVISIONS
NO:	1
DATE:	5/31/98
BY:	DBH
DESCRIPTION:	8" WATER LINE TO "6"

Esber & Associates
Engineers • Surveyors
5914 Palmer Blvd., Sarasota, FL 34232
(941)379-8831 • Fax (941)379-0556

APPROVED:
ENGINEER OF RECORD
NOT ISSUED FOR CONSTRUCTION

PROJECT NO: F11906
SHEET NO: C-4