

APPROX. M.H.W. LINE EL. = +1.5 (12-09-87)

75' PERIMETER CHANNEL
TWO P.I.E. MOUNTED - JAWIT. EA. DOCK TYP.

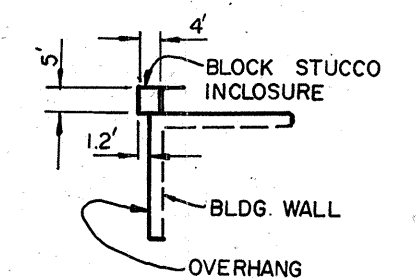
-EXIST. RIP-RAIP, REPAIRS AS NECESSARY

MISTLETOE LANE

BYRON LANE

OAKS

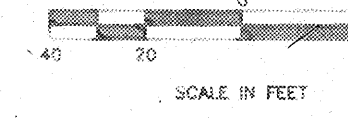
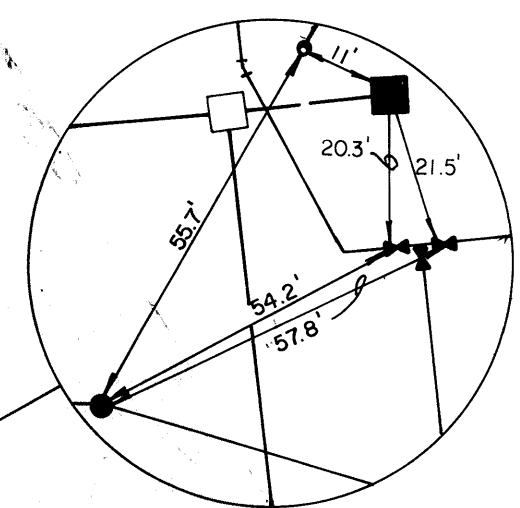
REBUILD AS A JUNCTION BOX
LIFT STATION
VACATE EXIST. FAIR OAKS LANE
REMOVE EXIST. PAVEMENT & CURBS
REMOVE SANITARY SEWER (MH7F-5 & MH7F-8 TO MAIN)



NOTE: STORM / ROOF DRAIN LEADS ARE TO BE STUBBED AT R.O.W. LINE, OR 10' FROM STRUCTURE WHERE NO R.O.W. LINE APPEARS. THE ROOF DRAIN SERVICE WILL BE DONE BY OTHERS. TYP. ALL UNITS.

NOTE: PVC SCH. 40 IS AN ALLOWABLE ALTERNATE STORM SEWER FOR PIPE 15" OR SMALLER

	A	B
1	51'	218'
2	54'	25'
3	32'	217'
4	60.4'	33'



TOWN OF LONGBOAT KEY, FLORIDA
 BOWYER & ASSOCIATES
 COREY'S LANDING
 RECORD DRAWING

DESIGNED BY PROJECT ENGINEER
 DATE: 8-23-88 S.R./D.J.
 CHECKED BY PROJECT NO.
 S.R. CORY-001

SCALE: 1" = 40'
 DRAWN BY P.J./R.W.C.

LTR. DATE REVISION

ENGINEER & LOCATION: BISHOP & ASSOCIATES - 78 SARASOTA CENTER BLVD SARASOTA, FL 34240 (813) 371-6362

SHEET NUMBER: CORY-002AB
 REVISION: 1

FORMERLY SHEET NO. C-5