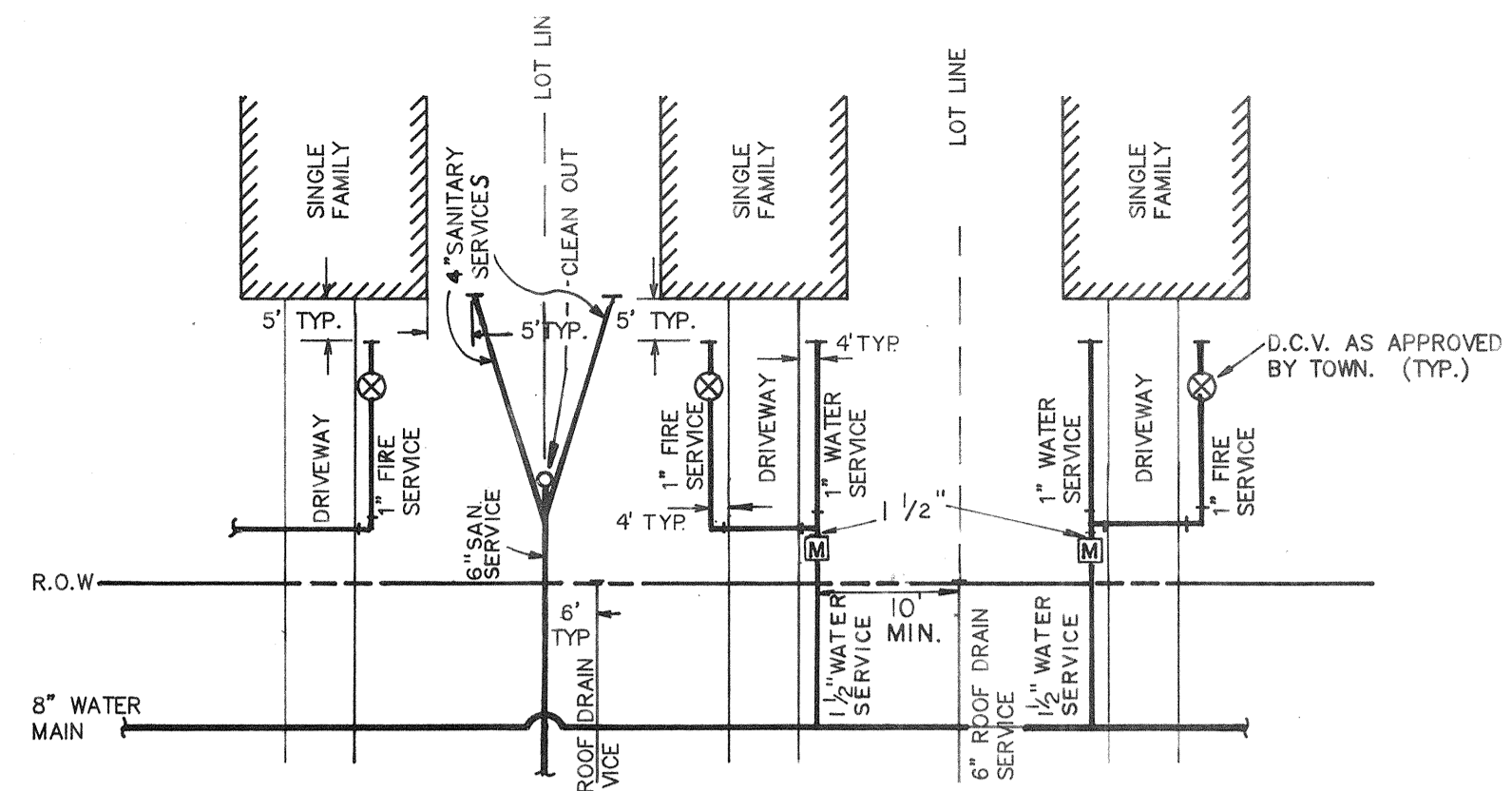


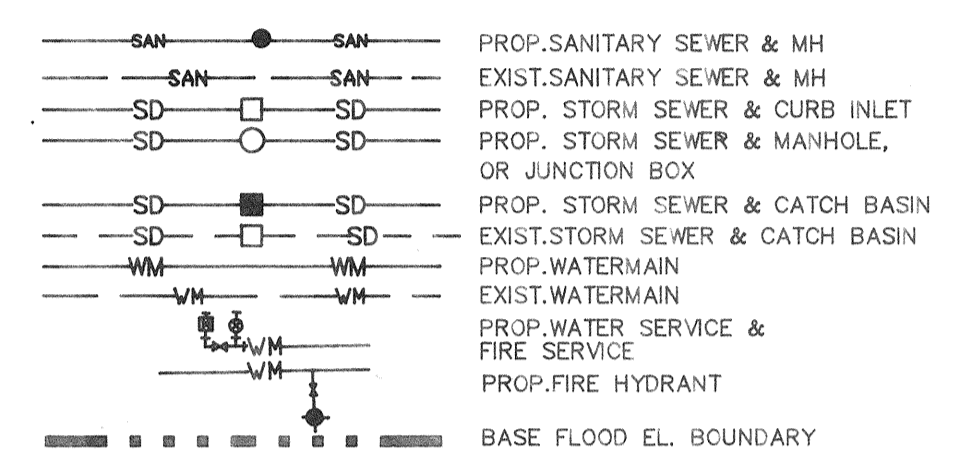
75' PERIMETER CHANNEL

APPROX. M.H.W. LINE EL. = +1.5 (12-09-87)

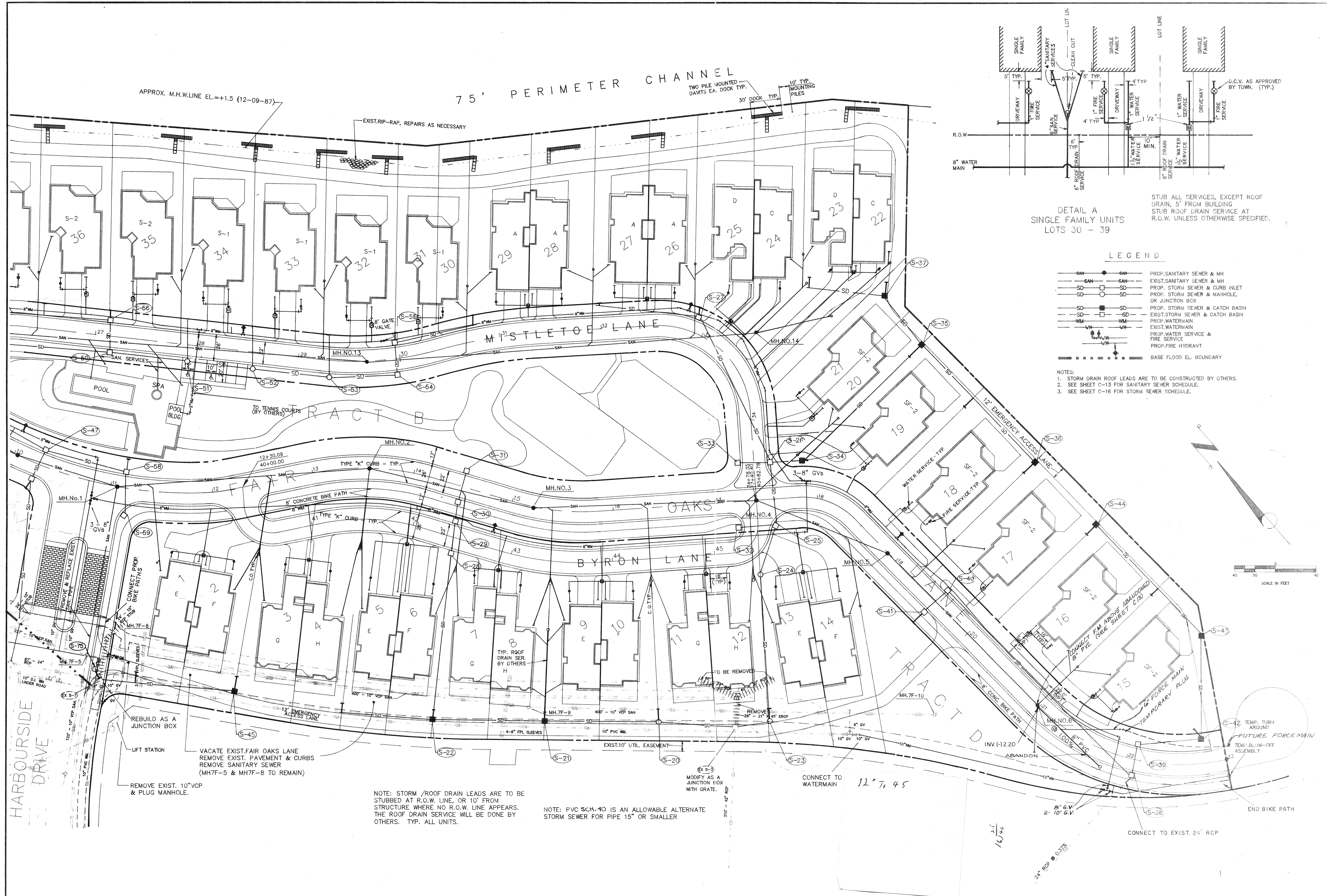


DETAIL A  
SINGLE FAMILY UNITS  
LOTS 30 - 39

LEGEND



- NOTES:
1. STORM DRAIN ROOF LEADS ARE TO BE CONSTRUCTED BY OTHERS.
  2. SEE SHEET C-13 FOR SANITARY SEWER SCHEDULE.
  3. SEE SHEET C-16 FOR STORM SEWER SCHEDULE.



CLIENT / TITLE: PROJECT NO: SHEET NO: REV. DATE: DATE: SCALE:

REBUILD AS A JUNCTION BOX  
LIFT STATION  
VACATE EXIST. FAIR OAKS LANE  
REMOVE EXIST. PAVEMENT & CURBS  
REMOVE SANITARY SEWER  
(MH7F-5 & MH7F-8 TO REMAIN)  
REMOVE EXIST. 10" VCP  
& PLUG MANHOLE.

NOTE: STORM / ROOF DRAIN LEADS ARE TO BE STUBBED AT R.O.W. LINE, OR 10' FROM STRUCTURE WHERE NO R.O.W. LINE APPEARS. THE ROOF DRAIN SERVICE WILL BE DONE BY OTHERS. TYP. ALL UNITS.

NOTE: PVC SCH. 40 IS AN ALLOWABLE ALTERNATE STORM SEWER FOR PIPE 15" OR SMALLER

WILLIAM F. BISHOP & ASSOCIATES, INC.  
CONSULTING ENGINEERS • SURVEYORS  
78 Sarasota Center Boulevard Sarasota, Florida 34240 (813) 371-6362

REVISED	BY	DATE	DESCRIPTION	REVISED	BY	DATE	DESCRIPTION

DATE	DESCRIPTION	DATE	DESCRIPTION
1-23-89	REV. DET. 'A', WATER & FIRE SERVICE	8-23-88	
11-08-88	ADDED SAN. SEWER CLEAN-OUTS	1" = 40'	
10-17-88	ADD TEMP. CO. SHOWED LOCATION OF FUTURE FORCE MAIN	DESIGN	S.R. / D.J.
9-30-88	GENERAL REVISIONS	DRAWN	P.J. / R.W.C.
9-12-88	GENERAL REVISIONS	CHECKED	P.P.
		APPROVED	W.F.B.

CLIENT/TITLE: BOWYER & ASSOCIATES  
COREY'S LANDING  
UTILITY PLAN  
PROJECT NO: CURY-00  
SHEET NO: 01