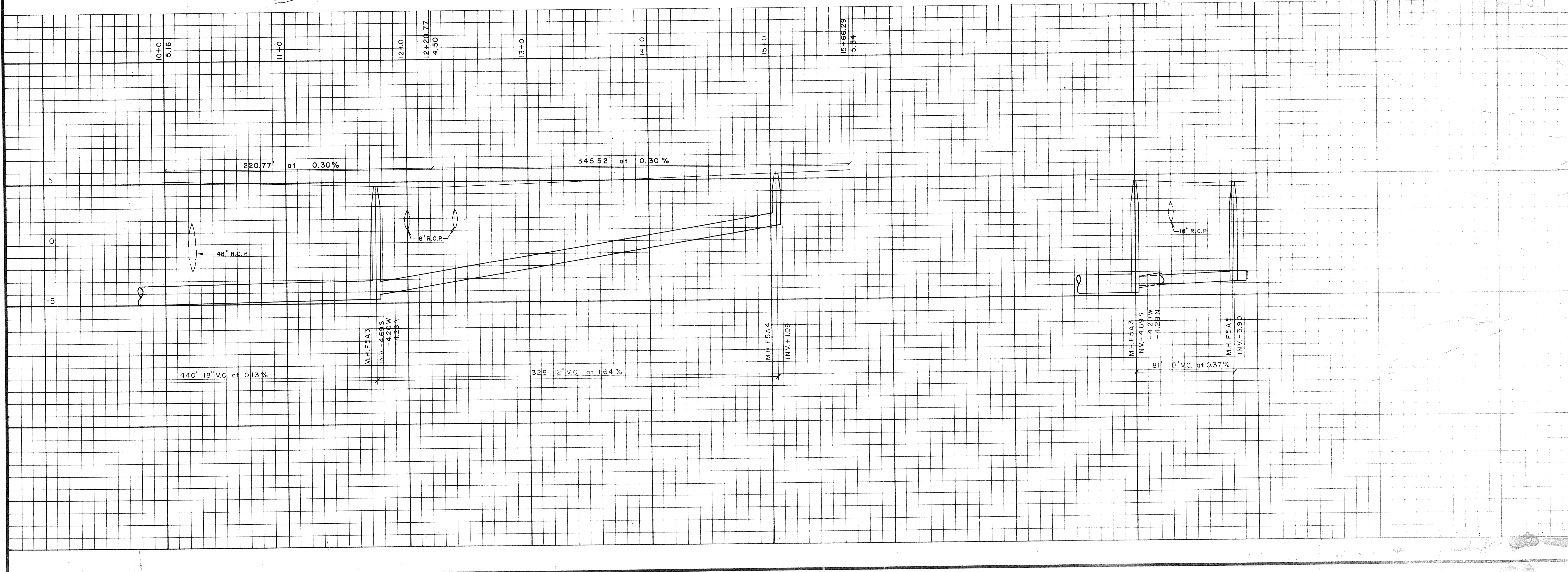


NOTE: Sanitary Lateral Stations are from nearest down stream manhole (0+00)

- LEGEND
- General Telephone
 - Storer Television
 - Fla. Power & Light Co.
 - Arvida Corporation



TOWN OF LOUGBOAT KEY, FLORIDA		DESIGNED BY PROJECT ENGINEER
ENGINEER ARVIDA CORPORATION	DATE: 10-21-77	DRAWN BY PROJECT NO.
PROJECT NO. 10-21-77	REVISION	CHECKED BY
4509 BEE RIDGE RD., SARASOTA, FLORIDA		
SHEET NUMBER 10-4-77	REVISION	PROJECT ENGINEER