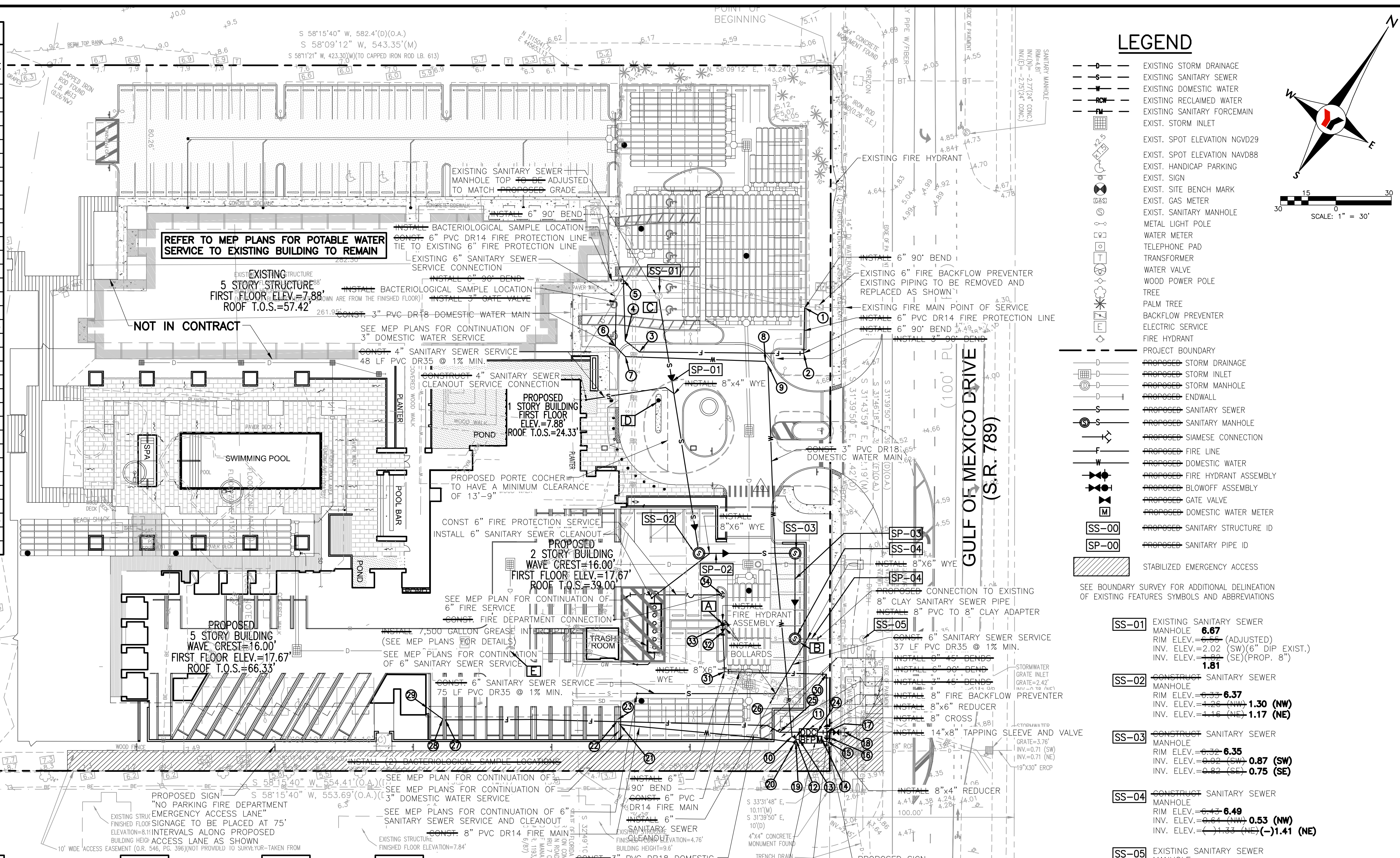


### RECORD SWING TIE LOCATION TABLE

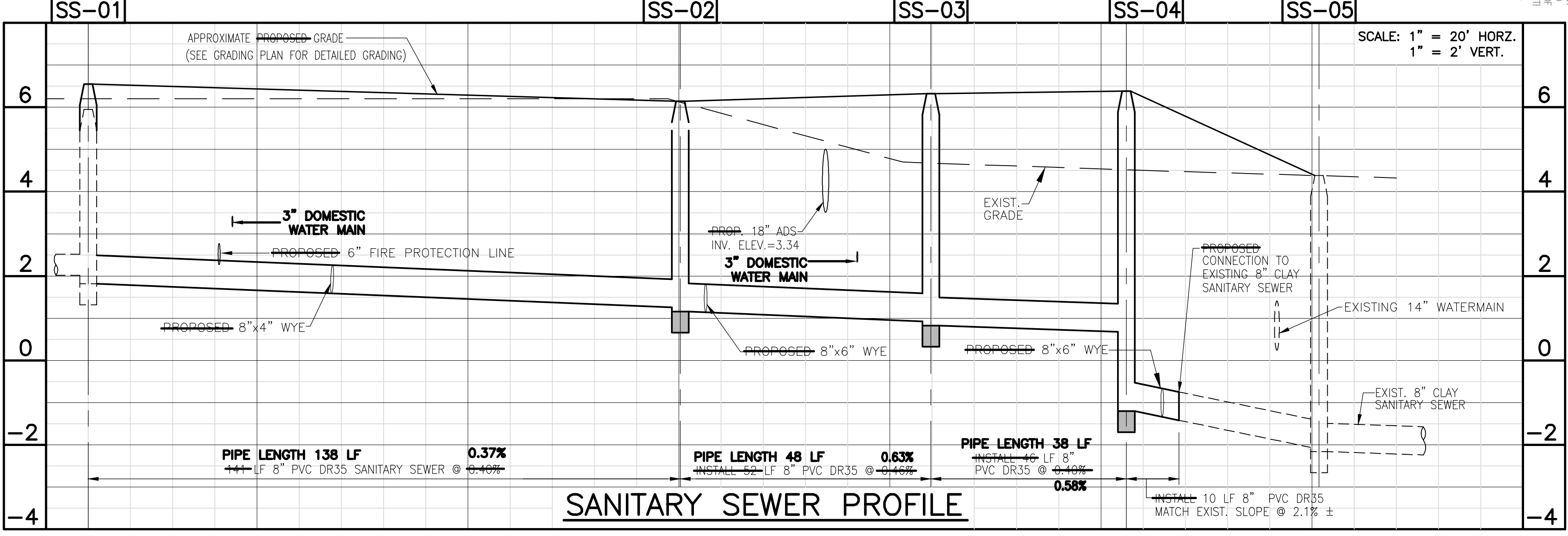
POINT NUMBER	POINT DESCRIPTION	FIRE HYDRANT					RECORD GROUND ELEVATION		RECORD TOP OF PIPE ELEVATION	
		A	B	C	D	E				
1	6" 90° BEND	-	-	79.2'	93.9'	-	6.45	1.59		
2	6" 90° BEND	-	-	84.4'	82.7'	-	5.95	1.84		
3	6" 45° BEND	-	-	32.2'	28.8'	-	6.45	2.97		
4	6" 45° BEND	-	-	30.4'	37.6'	-	6.49	3.37		
5	6" 90° BEND	-	-	21.2'	68.6'	-	6.47	3.81		
6	3" 45° BEND	-	-	36.1'	38.1'	-	6.48	4.24		
7	3" 45° BEND	-	-	37.6'	30.3'	-	6.49	4.00		
8	3" 45° BEND	-	-	67.6'	61.7'	-	6.21	2.12		
9	3" 45° BEND	-	-	69.9'	62.4'	-	6.23	2.43		
10	4"x3" REDUCER	70.9'	52.4'	-	-	-	4.07	1.85		
11	4" 90° BEND	71.3'	51.3'	-	-	-	4.07	1.90		
12	4"x4"x4" TEE	72.6'	53.1'	-	-	-	4.07	1.91		
13	4" BFP AND METER ASSEMBLY(SOUTH END)	74.5'	53.6'	-	-	-	4.07	4.06		
14	4" BFP AND METER ASSEMBLY(NORTH END)	82.7'	56.0'	-	-	-	3.79	3.79		
15	4" 90° BEND	84.2'	56.8'	-	-	-	3.86	1.12		
16	8"x4" REDUCER	82.2'	54.4'	-	-	-	3.86	1.23		
17	8"x8"x8" CROSS	80.6'	52.4'	-	-	-	3.86	1.23		
18	14"x8" TAPPING SLEEVE AND VALVE	86.1'	55.4'	-	-	-	3.86	4.42 (NUT)		
19	4" 90° BEND	73.6'	54.1'	-	-	-	4.07	1.92		
20	4"x3" REDUCER	72.9'	54.7'	-	-	-	4.07	1.94		
21	3" 45° BEND	77.4'	105.3'	-	-	-	4.71	3.36		
22	3" 45° BEND	77.3'	105.9'	-	-	-	4.71	3.28		
23	3" 90° BEND	76.6'	105.5'	-	-	-	4.71	3.16		
24	8" BACKFLOW PREVENTER	78.3'	51.5'	-	-	-	3.95	3.95		
25	8" 90° BEND	62.9'	46.8'	-	-	-	4.07	2.52		
26	8" 90° BEND	59.3'	48.7'	-	-	-	4.33	2.54		
27	8" 90° BEND	158.8'	-	-	-	51.3'	5.25	2.95		
28	8" 90° BEND	160.0'	-	-	-	52.0'	5.25	5.48		
29	8" 90° BEND	165.9'	-	-	-	54.3'	5.87	5.44		
30	6" 90° BEND	62.1'	25.3'	-	-	-	4.33	0.80		
31	6" 90° BEND	25.1'	41.8'	-	-	-	4.33	2.57		
32	6" GATE VALVE	2.4'	39.3'	-	-	-	7.31	4.95 (NUT)		
33	FIRE HYDRANT	0	39.9'	-	-	-	6.38	6.38		
34	SIAMESE FIRE DEPT. CONNECTION	17.3'	47.1'	-	-	-	5.63	5.63		



### LEGEND

- EXISTING STORM DRAINAGE
- EXISTING SANITARY SEWER
- EXISTING DOMESTIC WATER
- EXISTING RECLAIMED WATER
- EXISTING SANITARY FORCE MAIN
- EXIST. STORM INLET
- EXIST. SPOT ELEVATION NGVD29
- EXIST. SPOT ELEVATION NAVD88
- EXIST. HANDCAP PARKING
- EXIST. SIGN
- EXIST. SITE BENCH MARK
- EXIST. GAS METER
- EXIST. SANITARY MANHOLE
- METAL LIGHT POLE
- WATER METER
- TELEPHONE PAD
- TRANSFORMER
- WATER VALVE
- WOOD POWER POLE
- TREE
- PALM TREE
- BACKFLOW PREVENTER
- ELECTRIC SERVICE
- FIRE HYDRANT
- PROJECT BOUNDARY
- PROPOSED STORM DRAINAGE
- PROPOSED STORM INLET
- PROPOSED STORM MANHOLE
- PROPOSED ENDWALL
- PROPOSED SANITARY SEWER
- PROPOSED SANITARY MANHOLE
- PROPOSED SIAMESE CONNECTION
- PROPOSED FIRE LINE
- PROPOSED DOMESTIC WATER
- PROPOSED FIRE HYDRANT ASSEMBLY
- PROPOSED BLOWOFF ASSEMBLY
- PROPOSED GATE VALVE
- PROPOSED DOMESTIC WATER METER
- PROPOSED SANITARY STRUCTURE ID
- PROPOSED SANITARY PIPE ID
- STABILIZED EMERGENCY ACCESS

SEE BOUNDARY SURVEY FOR ADDITIONAL DELINEATION OF EXISTING FEATURES SYMBOLS AND ABBREVIATIONS



### NOTES:

- 2" HDPE DOMESTIC WATER MAIN SHALL BE SDR 11, PRESSURE RATING 160 P.S.I.
- 6" AND 8" WATER MAIN SHALL CONFORM TO THE REQUIREMENTS OF AWWA STANDARD C-900, DR-18 WITH WORKING PRESSURE OF 150 P.S.I.G.
- ALL WATER MAIN SHALL BE COLOR CODE BLUE.
- GRAVITY SANITARY SEWER PIPE SHALL BE P.V.C. SDR-35, ASTM D-3034, COLOR CODE GREEN.
- ALL ELEVATIONS ARE BASED ON NGVD. TAPE SHALL BE INSTALLED ON ALL CLEAN-OUT CAPS.
- ALL NEW MANHOLE COVERS SHALL BE RUBBER "O" RING TYPE AND PLUMBERS PROVIDED BY WADSWORTH O'NEAL ENGINEERING.
- FOR ALL 6" FIRE PROTECTION SERVICES REFER TO FIRE PROTECTION PLAN ACCESS TO CONNECTIONS SHALL BE MAINTAINED AT ALL TIMES DURING CONSTRUCTION
- STANDPIPES SHALL BE INSTALLED AS STRUCTURES ARE BUILT AND FIRE DEPARTMENT PER NFPA 1, CHAPTER 16.
- SEE MEP PLANS FOR GAS SERVICE.
- ALL WATER MAIN AND FIRE SERVICE LINES ARE TO HAVE 36 INCHES MINIMUM COVER.

## RECORD DRAWING

NO. BY DATE DESCRIPTION 1 PN 10/27/16 ADD UTILITY RECORD INFORMATION 2 3 4 5	NO. BY DATE DESCRIPTION 6 7 8 9 10	PREPARED FOR: <b>OPROCK LONGBOAT FEE, LLC</b> 1000 MARKET STREET, BUILDING 1, SUITE 300 PORTSMOUTH, NEW HAMPSHIRE 03801 PHONE: (603)-559-2187	<b>George F. Young, Inc.</b> 10540 PORTAL CROSSING, SUITE 105 BRADENTON, FLORIDA 34211 PHONE (941) 747-2981 FAX (941) 747-7234 ENGINEERING CERTIFICATE OF AUTHORIZATION NUMBER 21 ARCHITECTURE+ENGINEERING+ENVIRONMENTAL+LANDSCAPE+PLANNING+SURVEYING+UTILITIES GAINESVILLE+LAKEWOOD RANCH+ORLANDO+PALM BEACH GARDENS+ST. PETERSBURG+TAMPA+VENICE	MARK A. ADLER, P.E. No. 37799 DATE	<b>LONGBOAT KEY HOTEL</b> 4711 GULF OF MEXICO DRIVE WATER AND SANITARY SEWER PLAN SECTION 36, TOWNSHIP 35S., RANGE 16E.	JOB NO. <b>0971004401</b> SHEET NO. <b>C6</b>
---	---	---	--	---------------------------------------	--	--

DRAWING NOT VALID WITHOUT THE SIGNATURE AND SEAL OF A FLORIDA LICENSED ENGINEER