

**INVESTIGATE BEFORE YOU EXCAVATE**

**"CALL CANDY"**  
1-800-282-8881  
TOLL FREE

FL. STATUTE 553.851 (1979) REQUIRES MIN. OF 2 DAYS AND MAX. OF 5 DAYS NOTICE BEFORE YOU EXCAVATE.

**ALSO NOTIFY:**  
FP&L 953-7265  
TOWN OF LONGBOAT KEY 383-3721

**LEGEND**

**EXISTING UTILITIES**

- SANITARY SEWER
- FORCE MAIN
- WATER MAIN
- GAS MAIN
- BURIED CABLE TV
- BURIED ELECTRIC
- BURIED TELEPHONE

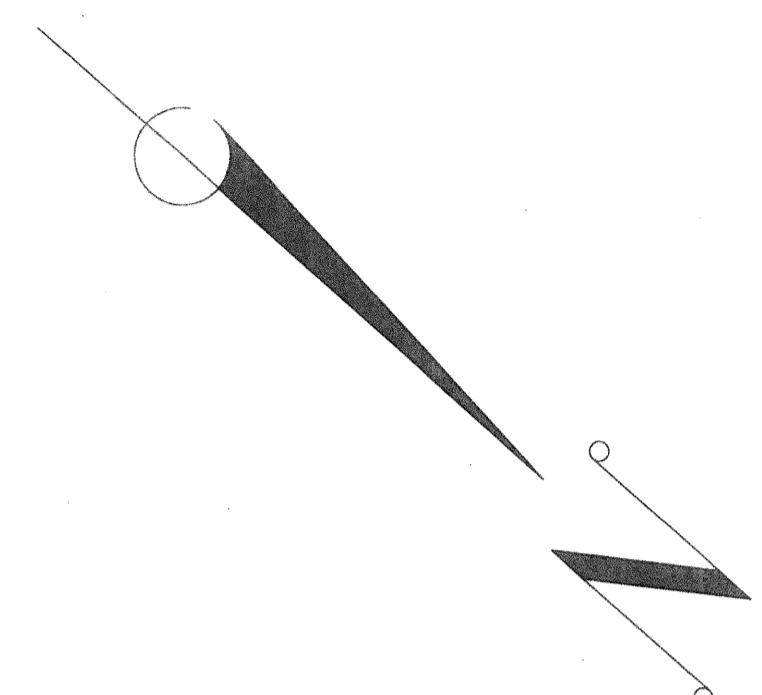
**PROPOSED UTILITIES**

- SANITARY SEWER
- STORM DRAIN
- WATER MAIN
- FIRE MAIN

**LIMITS OF CONSTRUCTION**

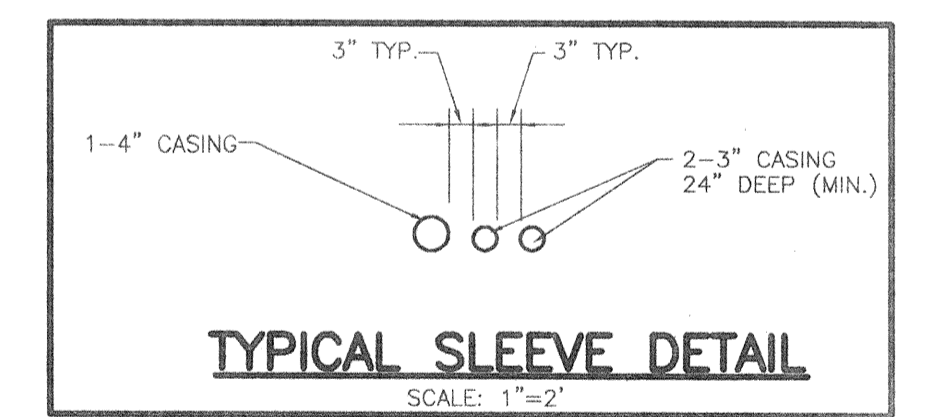
- PROP. STORM SEWER STRUCTURE
- PROP. SANITARY SEWER MANHOLE

**NOTE:**  
ALL UTILITY SLEEVES ARE TO BE CONSTRUCTED 5' BEHIND THE PROPOSED CURB UNLESS NOTED OTHERWISE.



**NOTE:**  
CONTRACTOR TO PROVIDE HEAVY DUTY INLET GRATES FOR INLET STRUCTURES: S-2A, S-4A, S-13A & S-15A.

- GENERAL NOTES:**
1. FOR DETAILS OF SAN. SEWER & STORM DRAIN PROFILE SEE SHT. 8
  2. FOR DETAILS OF STORM DRAIN CONSTRUCTION SEE SHT. 9 & 10.
  3. FOR DETAILS OF WATERMAIN CONSTRUCTION SEE SHT. 11.
  4. FOR DETAILS OF SANITARY SEWER CONSTRUCTION SEE SHT. 12.



FOR CONTINUATION SEE SHEET NO. 7

FOR CONTINUATION SEE SHEET NO. 7

FOR CONTINUATION

FOR CONTINUATION SEE SHEET NO. 6

**\* NOTE:**  
EXTREME CAUTION SHALL BE EXERCISED WHILE CONSTRUCTING/INSTALLING STRUCTURE S-4 AND 10" WATERMAIN, SO AS NOT TO DAMAGE EXISTING CEDAR TREE ADJACENT TO IT UNDER ANY CIRCUMSTANCES.

**REUSE OF DOCUMENTS**  
THESE DOCUMENTS ARE INSTRUMENTS OF SERVICE IN RESPECT OF THE PROJECT TO WHICH THEY APPLY AND ANY REUSE WITHOUT WRITTEN VERIFICATION OR ADAPTATION BY BISHOP AND ASSOCIATES (B&A) FOR THE SPECIFIC PURPOSES INTENDED WILL BE AT USER'S SOLE RISK AND WITHOUT LIABILITY OR LEGAL EXPOSURE TO B&A, AND USER SHALL INDEMNIFY AND HOLD HARMLESS B&A FROM ALL CLAIMS, DAMAGES, LOSSES AND EXPENSES INCLUDING ATTORNEY'S FEES ARISING OUT OF OR RESULTING THEREFROM. ANY SUCH VERIFICATION OR ADAPTATION WILL ENTITLE B&A TO FURTHER COMPENSATION AT RATES TO BE AGREED UPON BY USER AND B&A.

FIELD BOOK NO. \_\_\_\_\_  
PAGE \_\_\_\_\_  
Sec=Top-Ring

PLOT DATE: \_\_\_\_\_  
CAD FILE: ANS5005.DWG  
P. Dr. K.

**BISHOP & ASSOCIATES**  
Consulting Engineers • Surveyors  
AN EMPLOYEE OWNED COMPANY  
78 SARASOTA CENTER BLDG., SARASOTA, FLORIDA 34240  
813/371-6362 • Fax 813/378-3215

BY	DATE	Q.C.	DATE	DESCRIPTION
PSN	10-8-93	PCP	10-8-93	REV. CURB TYPE FROM RIBBON TO "F" MOD.
SWS	1-5-94	TJD	1-5-94	REV. PROJECT NO., NAME, & OWNER
SWS	1-14-94	PCP	1-14-94	RELOCATE W.M. & FIRE HYD.; STRUC.'S S-5 & S-6
DNS	4/25/94	PCP	4/25/94	REV. WATERMAIN LOCATION
PL	6/27/95			REV. WATER/FIRE ADD PARKING

BY	DATE	Q.C.	DATE	DESCRIPTION
D.B.	7-19-95			REV. PARKING, ADD RIBBON CURB, FENCE & TREES
D.N.S.	4-15-97			REV. TITLE BLOCK AND EXIST. GAS LINE LOCATION
PJ	6-11-99			ADDED RECORD INFORMATION

**TASK** INITIALS DATE

DESIGN P.C.P. 4-19-93

DRAWN P.S.N. 4-28-93

CHECKED W.F.B.

QUALITY CHK.

HORIZ. SCALE: 1"=20'

VERT. SCALE:

SEAL \_\_\_\_\_ DATE \_\_\_\_\_

ENGINEER OR SURVEYOR OF RECORD

**RECORD DRAWING**

CLIENT/TITLE: **THE WATER CLUB II AT LONGBOAT KEY**  
**THE WATER CLUB II DEVELOPEMNT, INC.**  
**DETAIL DRAINAGE AND UTILITY PLAN**

PROJECT NO. ANS-50  
SHEET NO. RD-5

C:\Draw\ANS50\Ans5005.dwg Mon Jun 14 10:59:04 1999 PJ P10000K