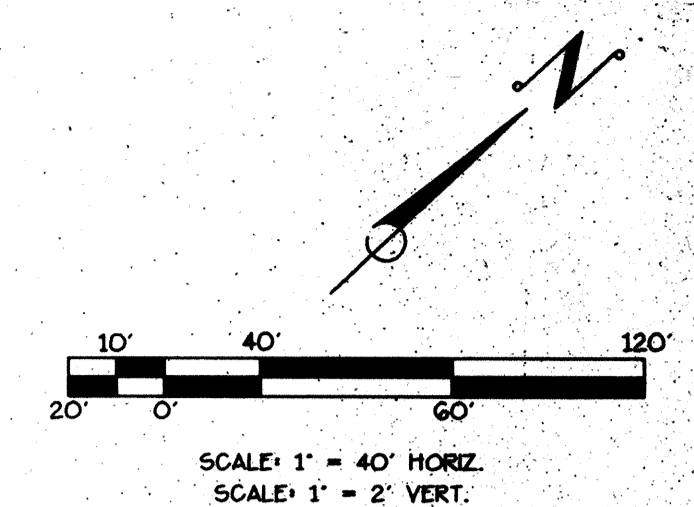
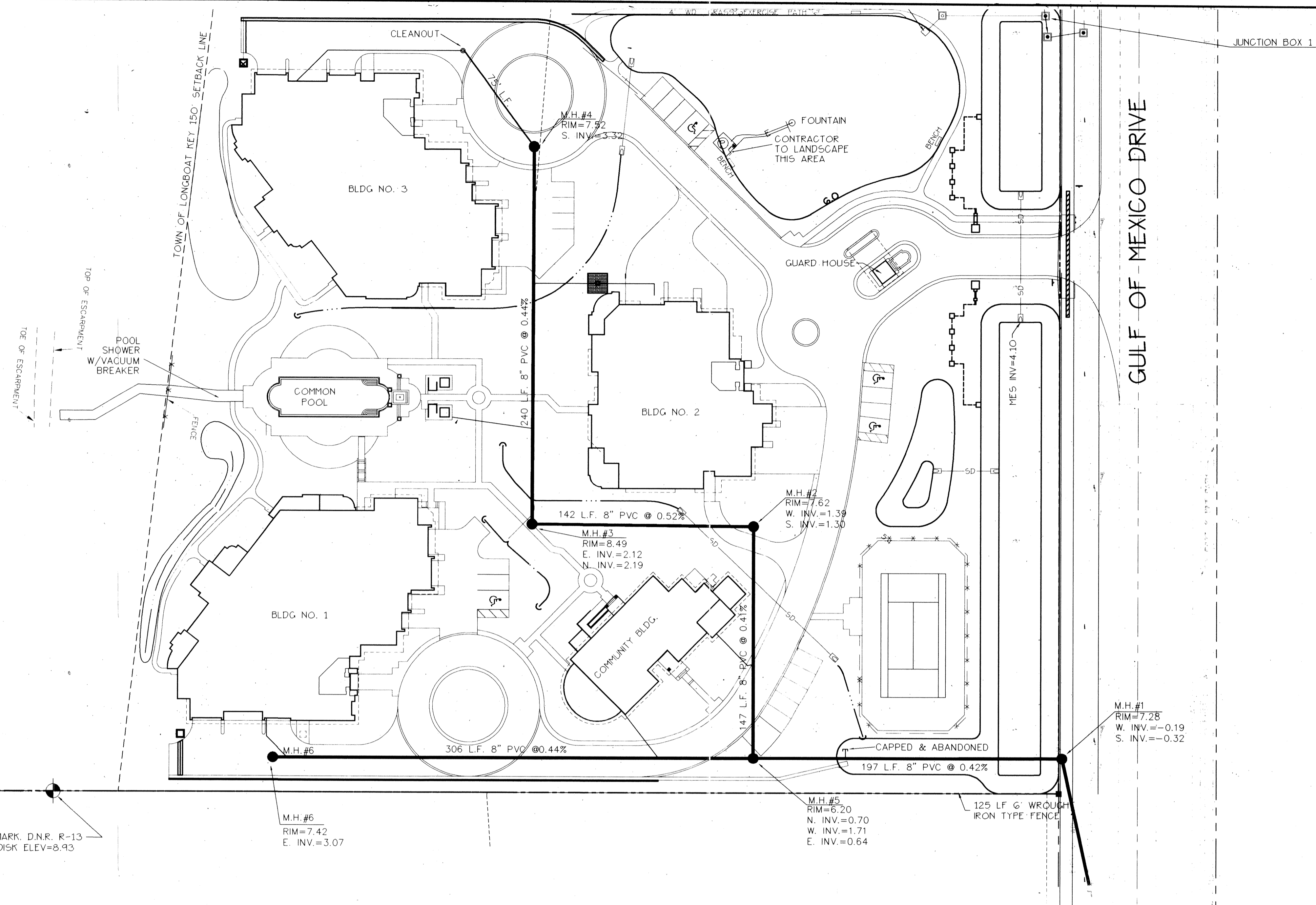
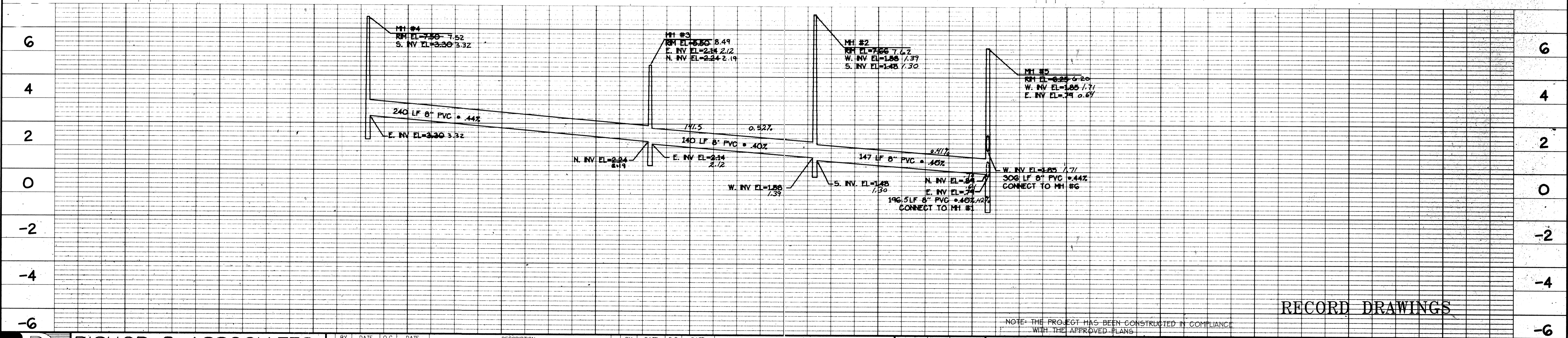


GULF OF MEXICO

GULF OF MEXICO DRIVE



NOTE:
FOR SANITARY SEWER PROFILE ON
MANHOLES 1, 5 AND 6, SEE SHEET
NO. 11



RECORD DRAWINGS

NOTE: THE PROJECT HAS BEEN CONSTRUCTED IN COMPLIANCE WITH THE APPROVED PLANS.

C:\DRAWINGS\01\ECG010 - Wed Oct 25 09:48:27 1995

B BISHOP & ASSOCIATES
Consulting Engineers - Surveyors
AN EMPLOYEE OWNED COMPANY
1101 6TH AVE. WEST, SUITE 108, BRADENTON, FLORIDA 34205
PHONE (813) 746-7446 • FAX (813) 746-7809

BY	DATE	Q.C.	DATE	DESCRIPTION
RPA	3-08-95	MMH	3-08-95	MODIFICATIONS TO THE TC EXIST GULF OF MEXICO DRIVE MANHOLE
D.B.	4-26-96		12/11/99	ADD RECORD INFO.
D.B.	5-1-98			ADD RECORD INFO.

TASK	INITIALS	DATE
DESIGN	MMH	12/15/94
DRAWN	R.P.A.	12/15/94
CHECKED		
QUALITY CHK		

HORIZ. SCALE: 1" = 40'
VERT. SCALE: 1" = 2'

SEAL ENGINEER OR SURVEYOR OF RECORD DATE

TITLE/CIENT
**VIZCAYA at LONGBOAT KEY
ECOVENTURE LBK, LTD.
SITE AND DEVELOPMENT SANITARY SEWER PLAN AND PROFILE**

PROJECT NO
ECG-01
SHEET NO.
10