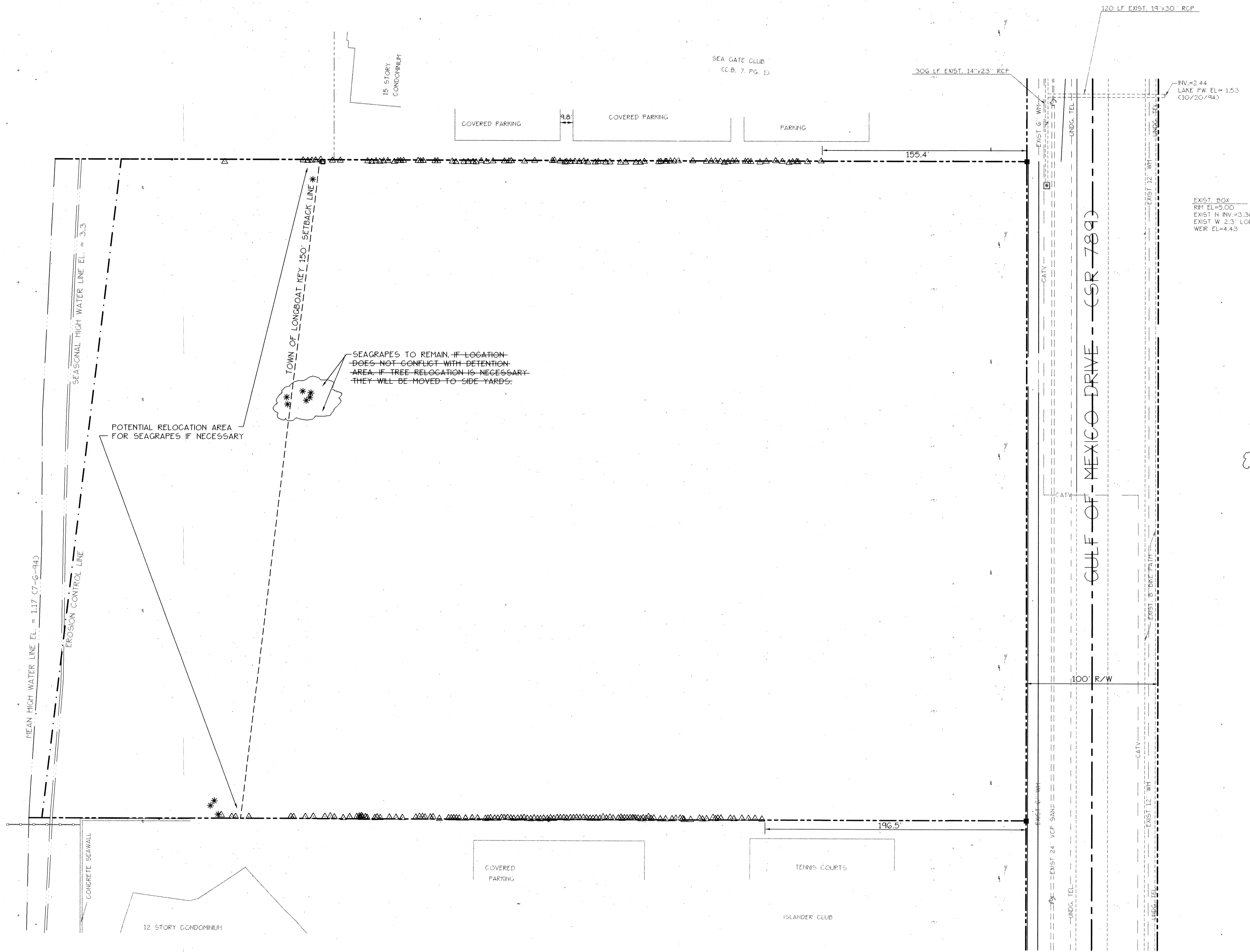


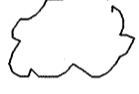


GULF OF MEXICO



EXIST. BOX
 RM EL=5.00
 EXIST N RW=3.30
 EXIST W 2.3' LONG
 WEIR EL=4.43

TREE LEGEND

-  FINE TREE - 244 TO REMAIN
-  PALM TREE - 10 TO BE RELOCATED
-  SEAGRAPES - 4 CLUSTERS TO BE RELOCATED IF NECESSARY (SEE NOTE)

NOTE: THE PROJECT HAS BEEN CONSTRUCTED IN COMPLIANCE WITH THE APPROVED PLANS

RECORD DRAWING

B BISHOP & ASSOCIATES
 Consulting Engineers - Surveyors
 AN EMPLOYEE OWNED COMPANY
 1101 6TH AVE. WEST, SUITE 108, BRADENTON, FLORIDA 34205
 PHONE (813) 746-7446 • FAX (813) 748-7809

REVISED	BY	DATE	Q.C.	DATE	DESCRIPTION
	D.B.	5-8-98			ADD RECORD INFO.

TASK	INITIALS	DATE
DESIGN	M.M.H.	9/30/94
DRAWN	R.P.A.	9/30/94
CHECKED		
QUALITY CHK		
VERT. SCALE		1" = 40'

SEAL _____ DATE _____
 ENGINEER OR SURVEYOR OF RECORD

TITLE/CLIENT: VIZCAYA at LONGBOAT KEY
 ECOVENTURE LBK, LTD.
 SITE AND DEVELOPMENT TREE PRESERVATION PLAN

PROJECT NO: ECG-01
 SHEET NO: 9

C:\BHAM\ECG-01\ECG0108 Thu May 14 11:36:23 1998 DERK BISHOP