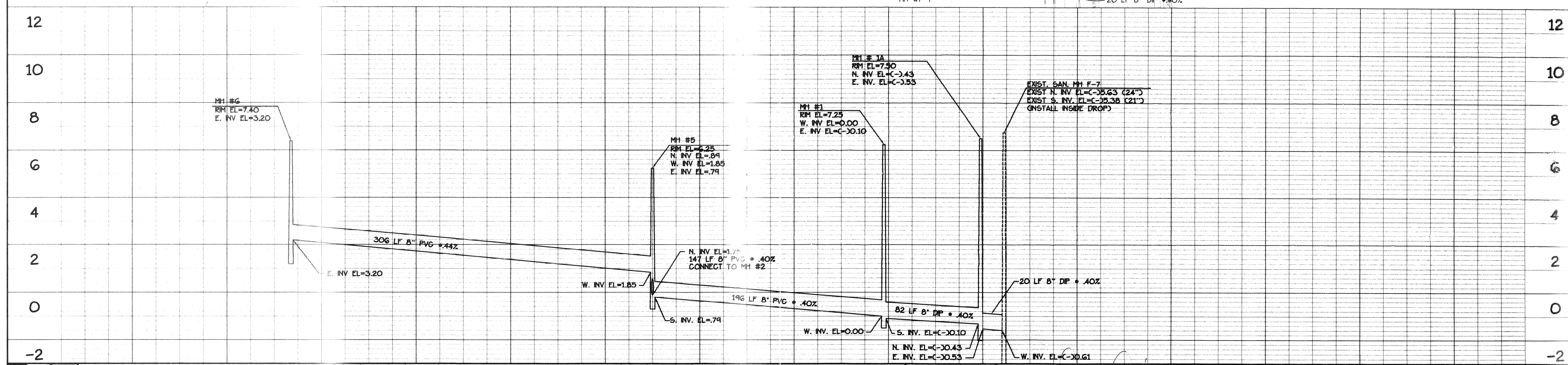
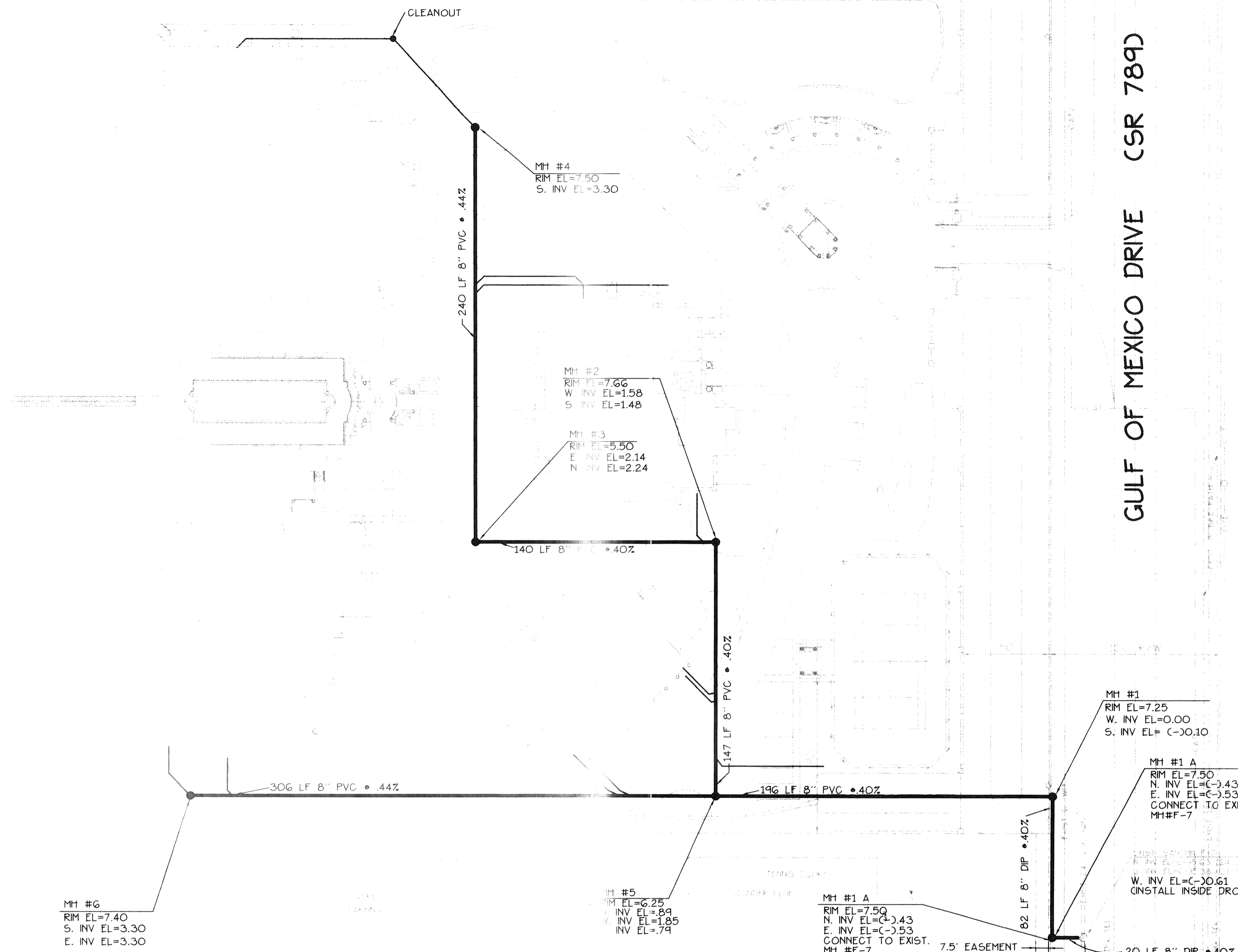


NOTE:
FOR SANITARY SEWER PROFILE ON
MANHOLES 2, 3, 4, AND 5, SEE SHEET
NO. 10

GULF OF MEXICO DRIVE (CSR 789D)



B BISHOP & ASSOCIATES
Consulting Engineers - Surveyors
AN EMPLOYEE OWNED COMPANY
1101 6TH AVE. WEST, SUITE 108, BRADENTON, FLORIDA 34205
PHONE (813) 746-7446 • FAX (813) 746-8009

BY	DATE	Q.C.	DATE	DESCRIPTION
RPA	3-08-95	MMH	3-08-95	MODIFICATIONS TO TIE TO EXIST GULF OF MEXICO DRIVE MANHOLE

TASK	INITIALS	DATE
DESIGN	M.M.H.	12/15/94
DRAWN	R.P.A.	12/15/94
CHECKED		
QUALITY CHK		
HORIZ. SCALE	1" = 40'	
VERT. SCALE	1" = 2'	

TITLE/CLIENT: VIZCAYA at LONGBOAT KEY
ECOVENTURE LBK, LTD.
SITE AND DEVELOPMENT SANITARY SEWER PLAN AND PROFILE

PROJECT NO: ECG-01
SHEET NO: 11

DATE: AUG 15 1996