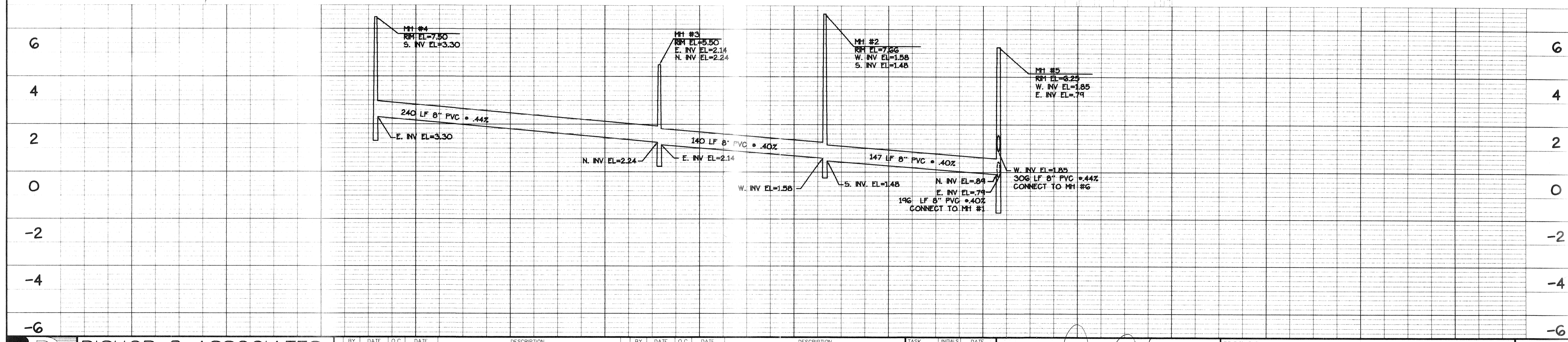
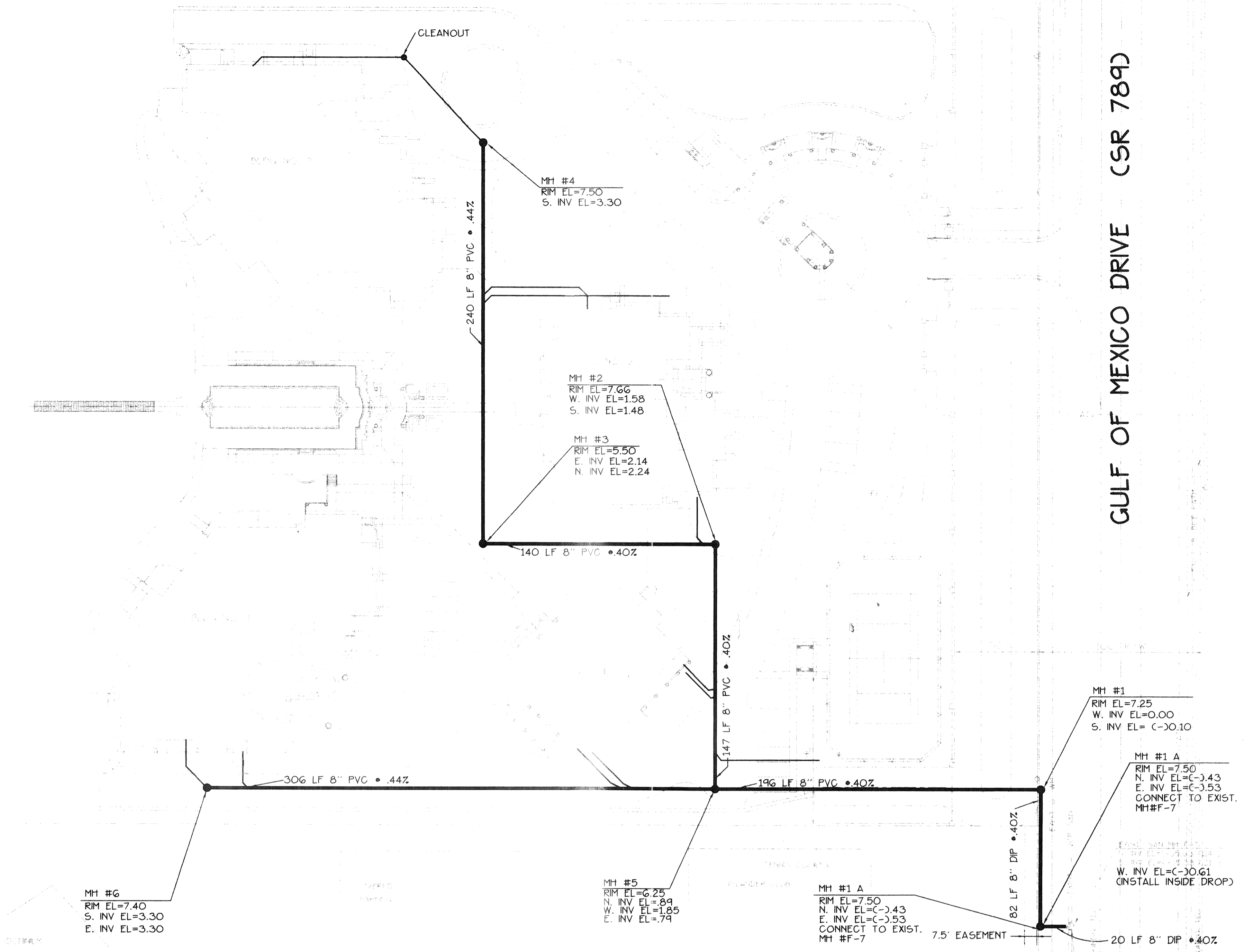


NOTE:  
FOR SANITARY SEWER PROFILE ON  
MANHOLES 1, 1A, 5 AND 6. SEE SHEET  
NO. 11

GULF OF MEXICO DRIVE (CSR 789)



DRAWING OF RECORD

**B** BISHOP & ASSOCIATES  
Consulting Engineers - Surveyors  
AN EMPLOYEE OWNED COMPANY  
1101 6TH AVE WEST, SUITE 108, BRADENTON, FLORIDA 34205  
PHONE (813) 746-7446 • FAX (813) 746-7809

BY	DATE	Q.C.	DATE	DESCRIPTION
RPA	3-08-95	MMH	3-08-95	MODIFICATIONS TO THE TO EXIST GULF OF MEXICO DRIVE MANHOLE

TASK	INITIALS	DATE
DESIGN	M.M.H.	12/15/94
DRAWN	R.P.A.	12/15/94
CHECKED		
QUALITY CHK.		
HORIZ. SCALE:	1" = 40'	
VERT. SCALE:	1" = 2'	

SEAL: *[Signature]* AUG 15 1996  
ENGINEER OR SURVEYOR OF RECORD

TITLE/CLIENT: VIZCAYA at LONGBOAT KEY  
ECOVENTURE LBK, LTD.  
SITE AND DEVELOPMENT SANITARY SEWER PLAN AND PROFILE

PROJECT NO: ECG-01  
SHEET NO: 10