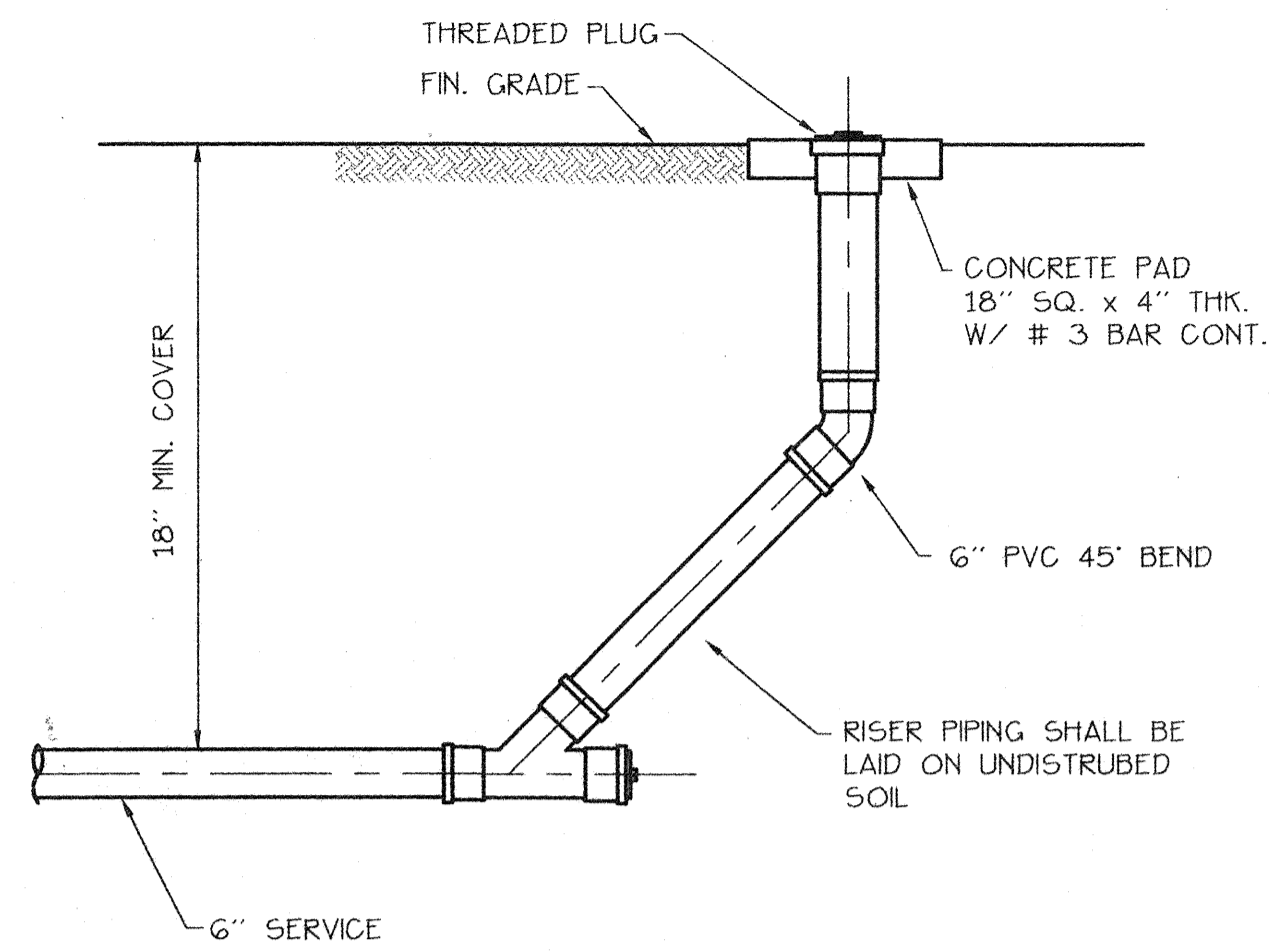


TYPICAL MANHOLE RING + COVER SECTION

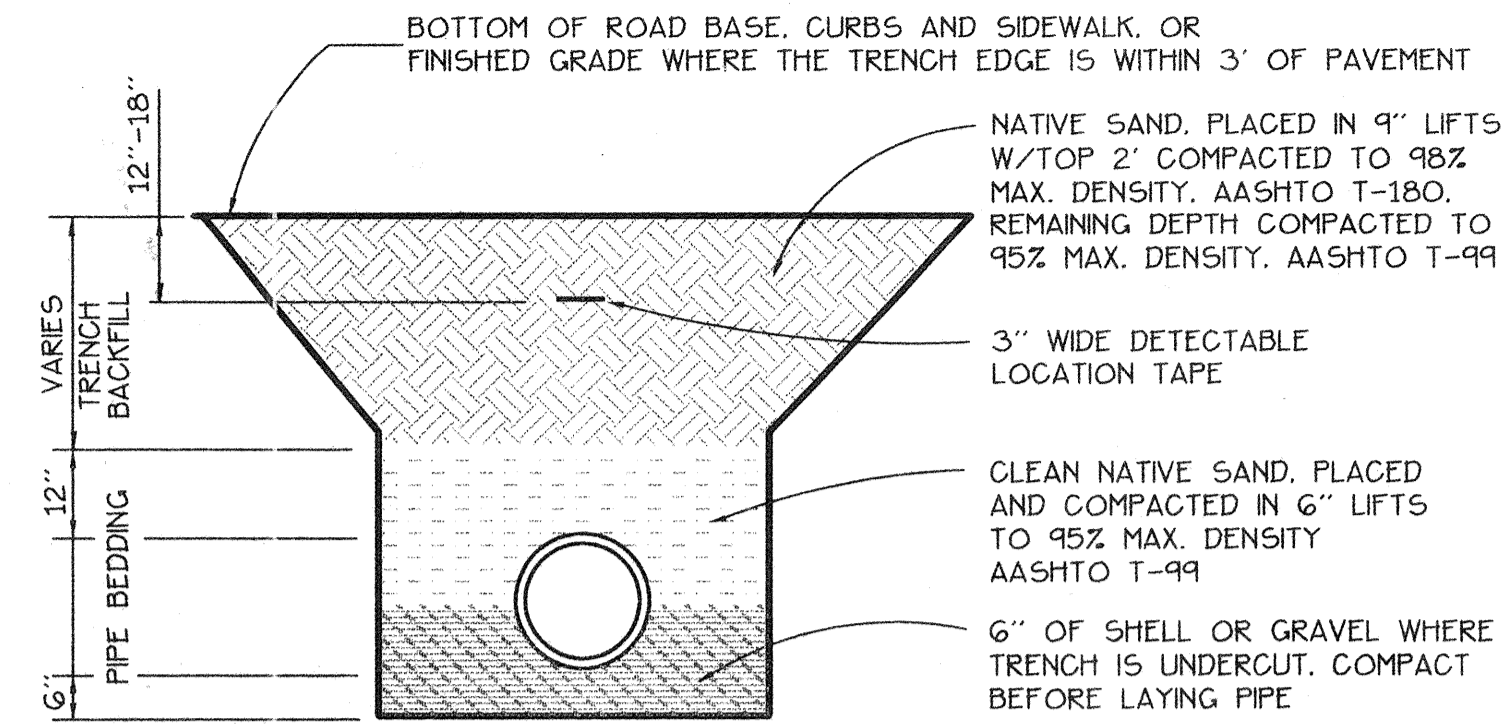
DOVETAIL GROOVE DETAIL

NTS

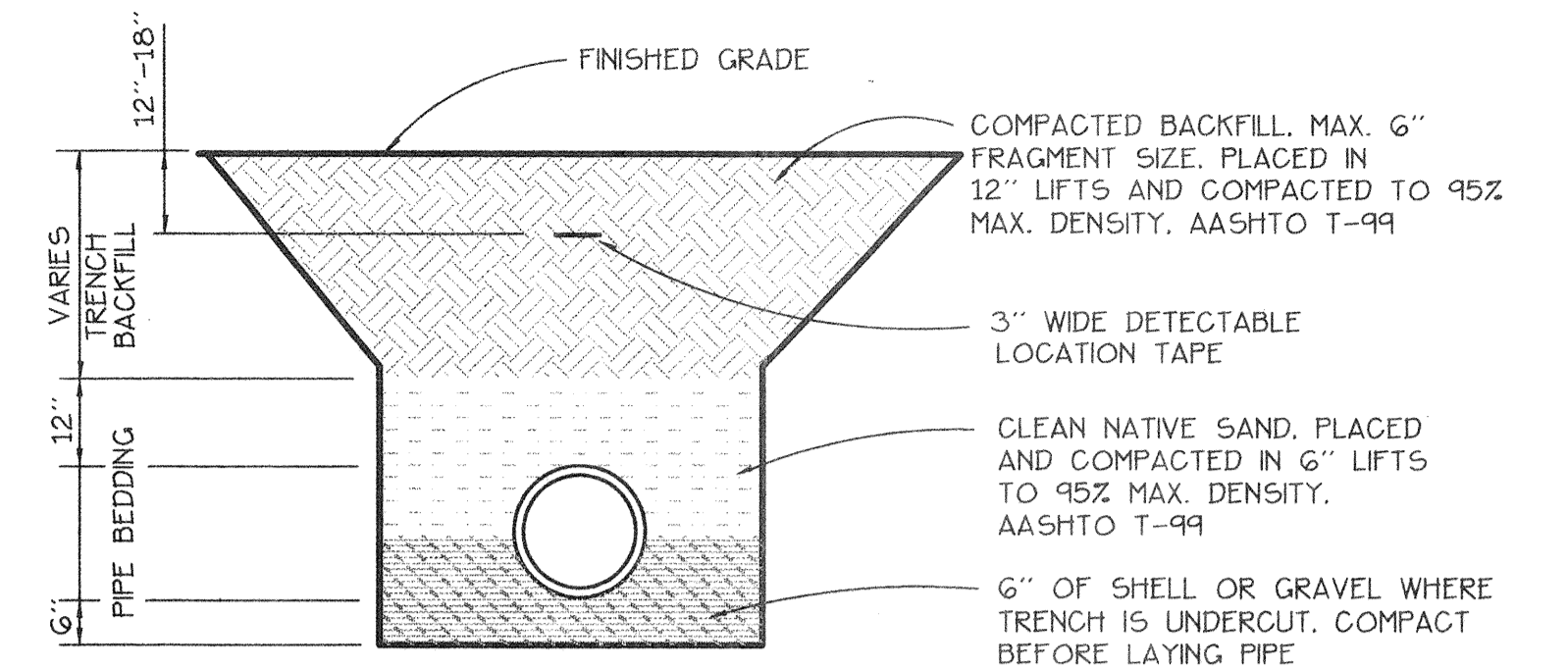


CLEAN OUT DETAIL

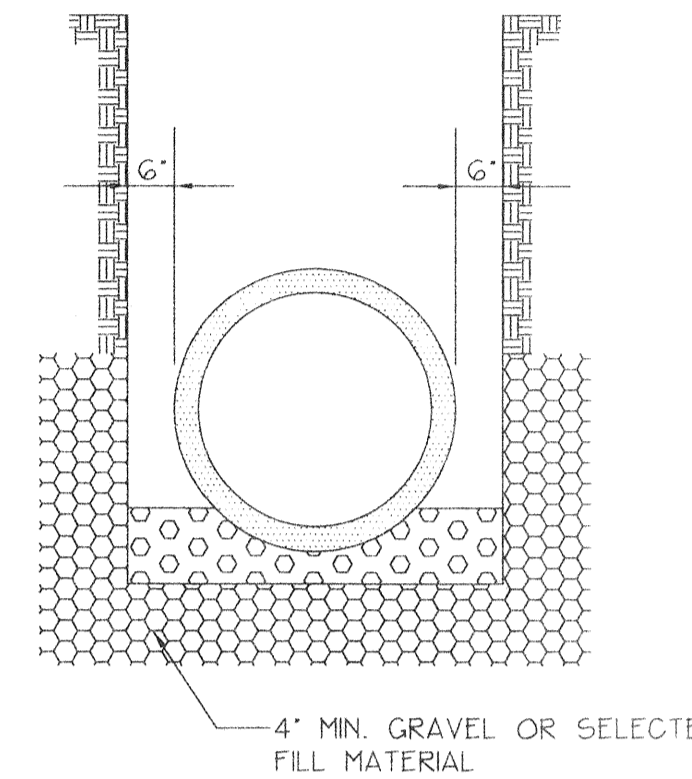
NTS



TRENCH "A" DETAIL



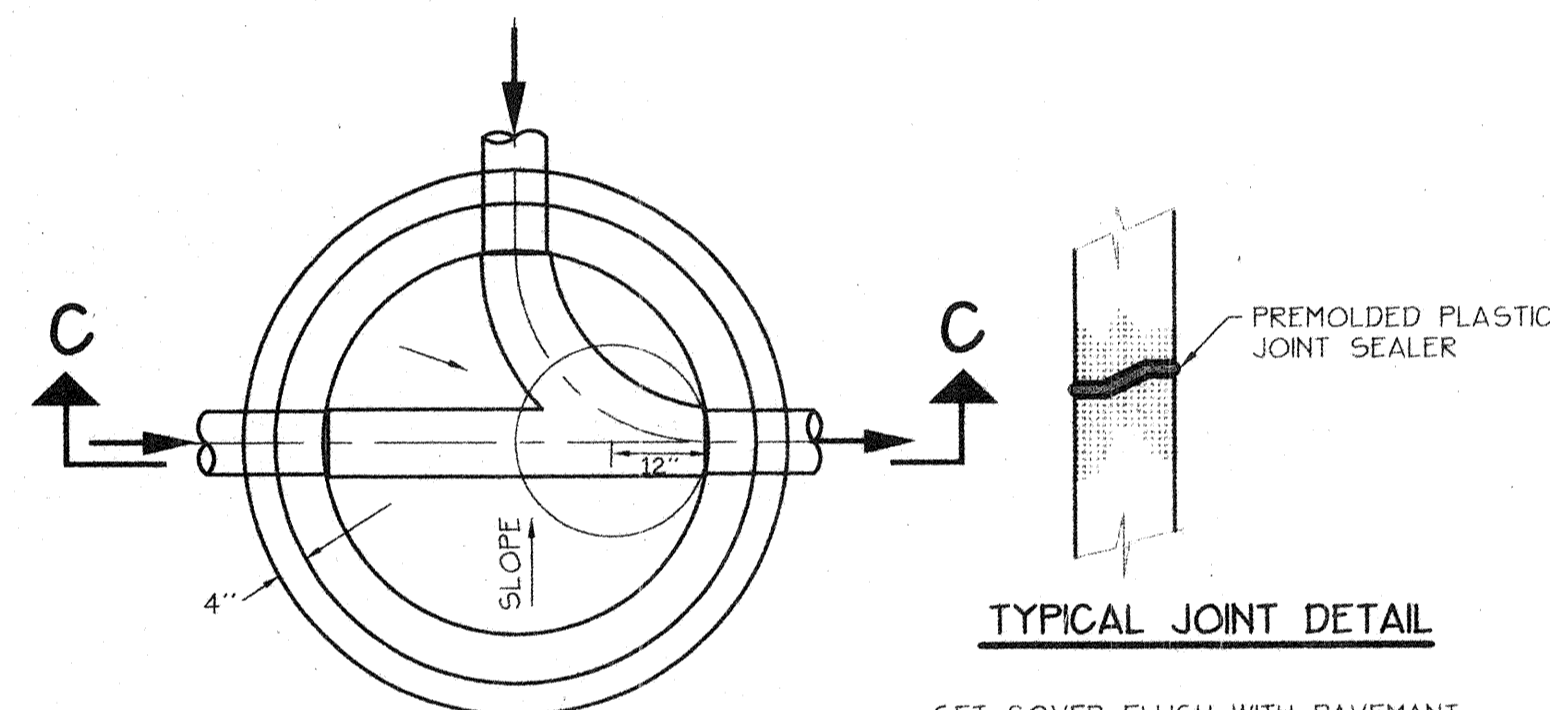
TRENCH "B" DETAIL



TRENCH IN ROCK

TYPICAL EXCAVATION AND PIPE SETTINGS

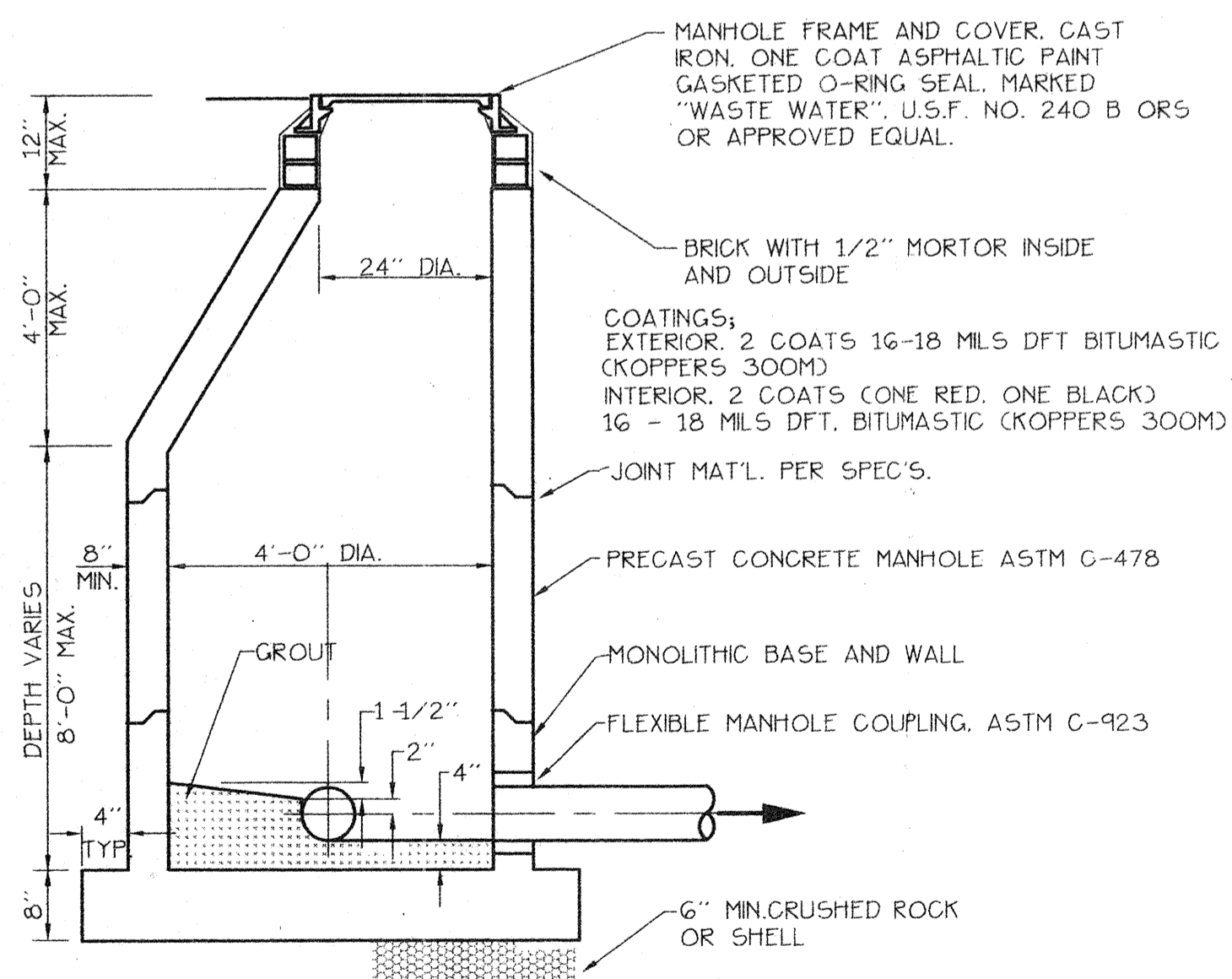
NTS



FLOW CHANNEL PLAN

TYPICAL JOINT DETAIL

SET COVER FLUSH WITH PAVEMENT IN PAVED AREAS
SET COVER 2-1/2" ABOVE FINISHED GRADE IN UNPAVED AREAS



STANDARD MANHOLE

FOR DEPTHS OVER 5'-0"

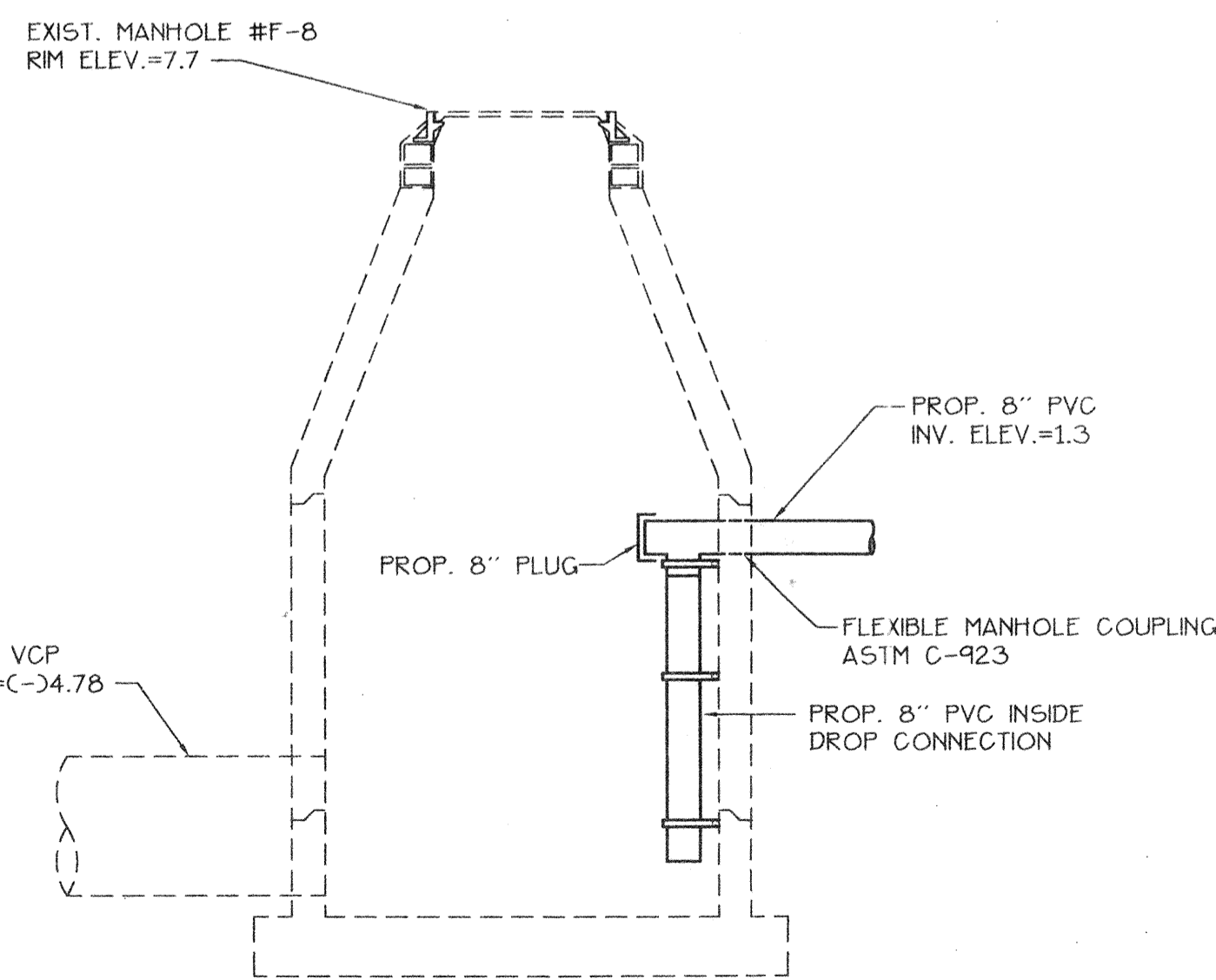
NTS

MANHOLE SPECIFICATIONS:

- MANHOLES SHALL COMPLY WITH A.S.T.M. SPECS. C-478, LATEST REVISION. "PRECAST REINFORCED CONCRETE MANHOLE SECTIONS." EXCEPT WALL THICKNESS SHALL BE MIN. 8".
- CONCRETE SHALL BE 4000 P.S.I./28 DAY MIN. STRENGTH, WITH TYPE II CEMENT.
- HEAVY DUTY MANHOLE RING (6" HIGH) AND COVER SHALL BE TYPE B (CDWG. NO. 240; OLD NO. 24) WITH FRAME + DOVETAIL GROOVED COVER (325 LB) TO ACCOMMODATE 1/4" DIA. O-RING AS MANUFACTURED BY U.S. FOUNDARY CORP., MIAMI, FLORIDA, OR APPROVED EQUAL, WITH THE WORDS "WASTEWATER" CAST INTO THE COVER.
- REINFORCING PER A.S.T.M. SPEC. C-478, LATEST REVISION.
- LEVELING BRICKS TO BE CLAY; MORTAR TO BE 2 PARTS CLEAN SAND AND 1 PART CEMENT WITH NO MORE 1/4 HYDRATED LIME. WITH JOINTS FULL + STRUCK FLUSH.
- NO STEPS SHALL BE USED.
- COMPLETELY FILL SPACE BETWEEN PIPES AND MANHOLE WALL WITH CEMENT MORTAR AFTER PIPE IS SET WITH 15 LB. EMBECCO PER 100 LB. CEMENT.

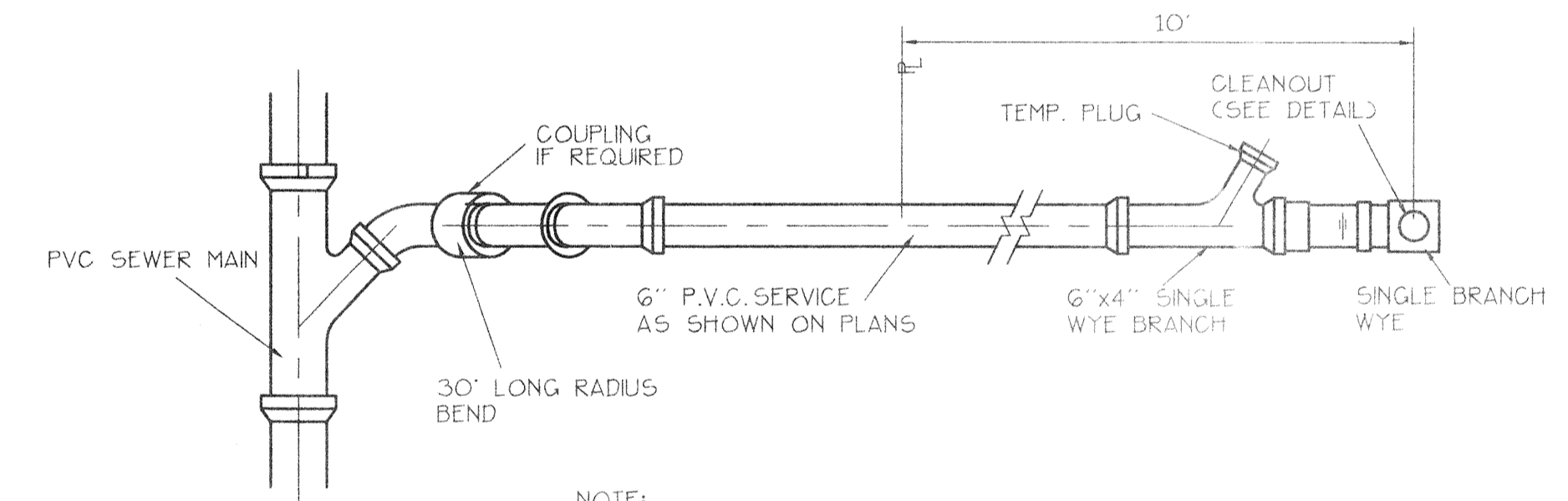
GENERAL NOTES:

- WHERE WATER + WASTEWATER MAINS CROSS WITH LESS THAN 18" VERTICAL CLEARANCE, THE WASTEWATER PIPE SHALL BE OF EITHER DUCTILE IRON OR CONCRETE ENCASED PVC. (20' MIN.) CENTERED ON THE POINT OF CROSSING.
- PARALLEL WATER + WASTEWATER MAINS SHALL MAINTAIN A HORIZONTAL SEPARATION OF AT LEAST 10'.
- WHERE STORMWATER SEWERS CROSS OVER WASTEWATER SEWERS WITH LESS THAN 12" VERTICAL CLEARANCE, THE WASTEWATER PIPE SHALL BE EITHER DUCTILE IRON OR CONCRETE ENCASED PVC. 10' MIN. EITHER SIDE OF CROSSING.



INSIDE DROP CONNECTION TO EXIST. MANHOLE

NTS

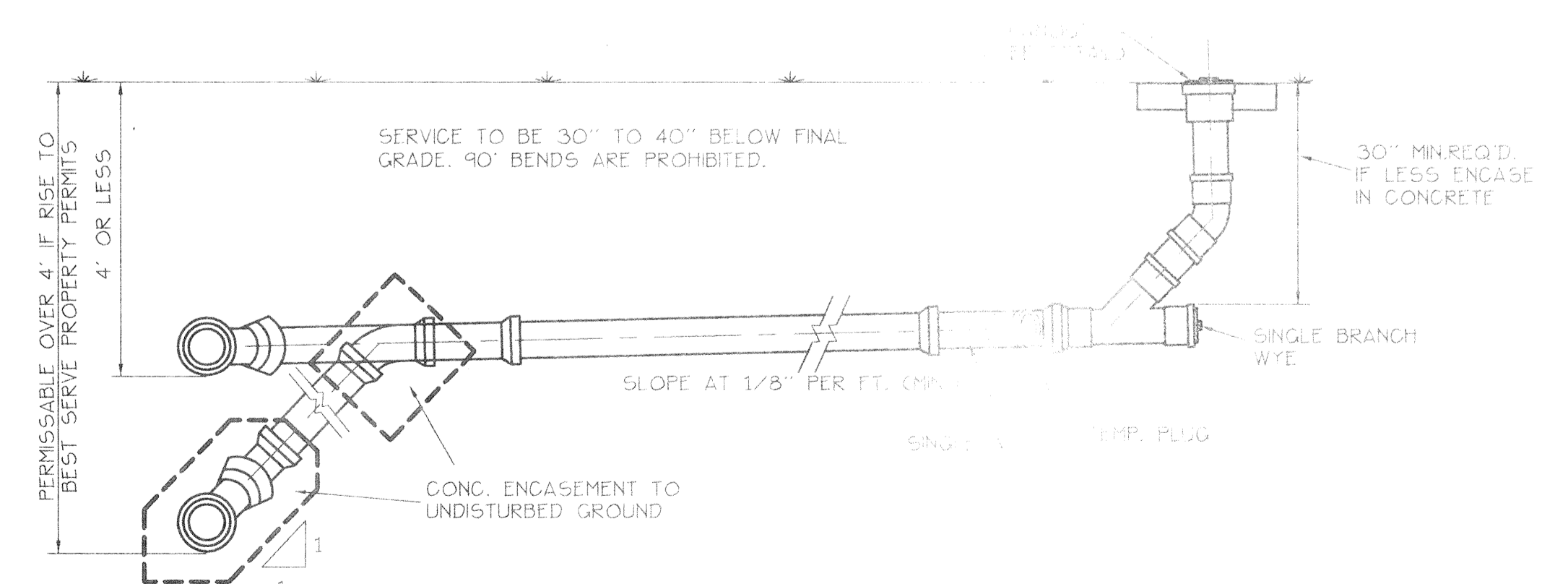


NOTE:

- WHERE SERVICE CONNECTIONS EXCEED 8' IN DEPTH THE SERVICE WYE SHALL BE ENCASED IN CONCRETE.
- SEWER SERVICE TO BE STAKED IN THE FIELD BY OR UNDER THE DIRECTION OF A REGISTERED ENGINEER AND/OR LAND SURVEYOR.

PLAN VIEW SINGLE SERVICE

NTS



TYPICAL SERVICE CONNECTION

NTS

RECORD DRAWING

VILLA PLACIA
TANGERINE DEVELOPMENT COMPANY
SANITARY SEWER SYSTEM DETAILS

PROJECT NO. DLG-01
SHEET NO. 8

BISHOP & ASSOCIATES
Consulting Engineers • Surveyors
AN EMPLOYEE OWNED COMPANY
70 SARASOTA CENTER BLVD. SARASOTA, FLORIDA 34240
PHONE (813) 371-6362 • FAX (813) 378-3219

BY	DATE	Q.C.	DATE	DESCRIPTION

TASK	INITIALS	DATE
DESIGN	J.J.T.	2-3-95
DRAWN	P.S.N.	2-6-95
CHECKED	J.J.T.	2-7-95
QUALITY CHK.		
NO. OF SCALES		
VERT. SCALE		
HORIZ. SCALE		

SEAL
ENGINEER OR SURVEYOR OF RECORD
DATE
5/2/96

C:\URBAN\DLG01\DLG01A08.Tru May 30 10:36:55 1995