

LOCATION MAP

STORMWATER DISCHARGE FILTRATION MATERIAL

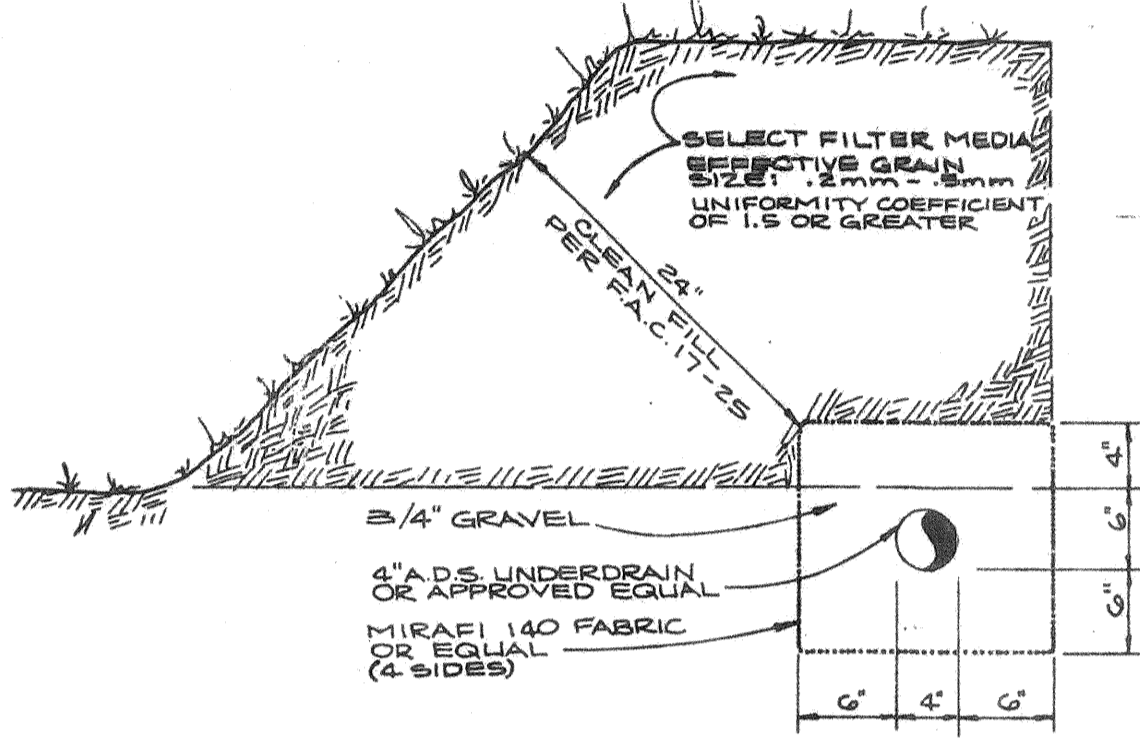
The material produced by Quality Aggregates meets the following design and performance standards of Department of Environmental Regulation, Chapter 17-25.025, Florida Administrative Code:

- 1) Washed (less than 12 silt, clay and organic matter)
- 2) Uniformity Coefficient of 1.5 or greater
- 3) Effective grain size of 0.20 to 0.55 mm in diameter

Representative Sample

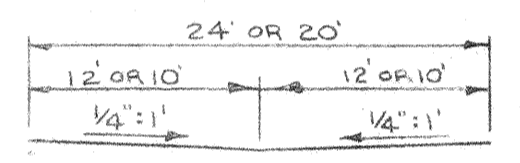
Sieve Analysis	
U.S. Sieve	% Passing
3/8	100
4	90
8	70
16	48
30	26
50	13
100	2
200	0.6

Uniformity Coefficient: 7.4
 Effective Grain Size: .23mm
 Permeability: 227 feet per day (.0800 cm/sec)



UNDERDRAIN DETAIL

SCALE: 1" = 1'-0"



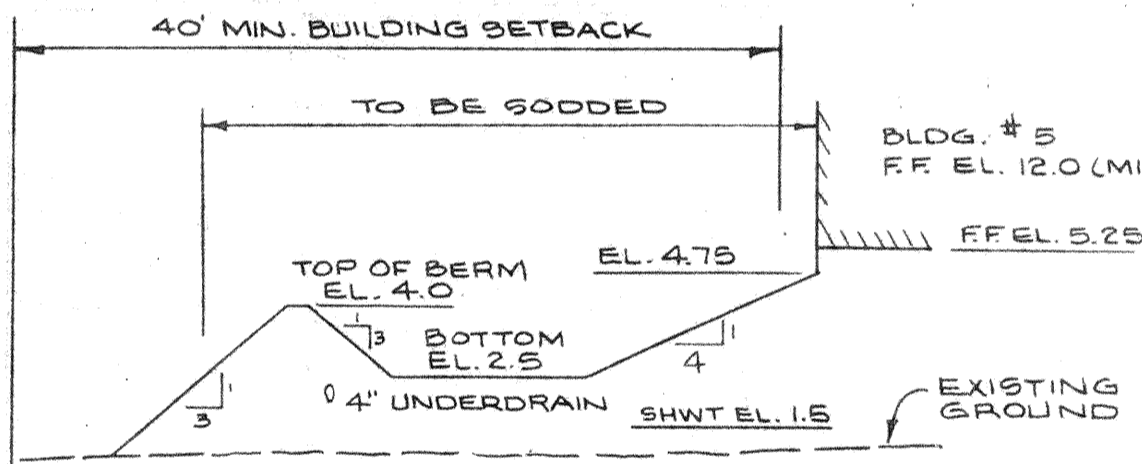
SECTION B-B

(FOR CROSS SECTION SPECIFICATIONS, SEE BELOW)

1" = 10' HOR.
 1" = 6' VER.

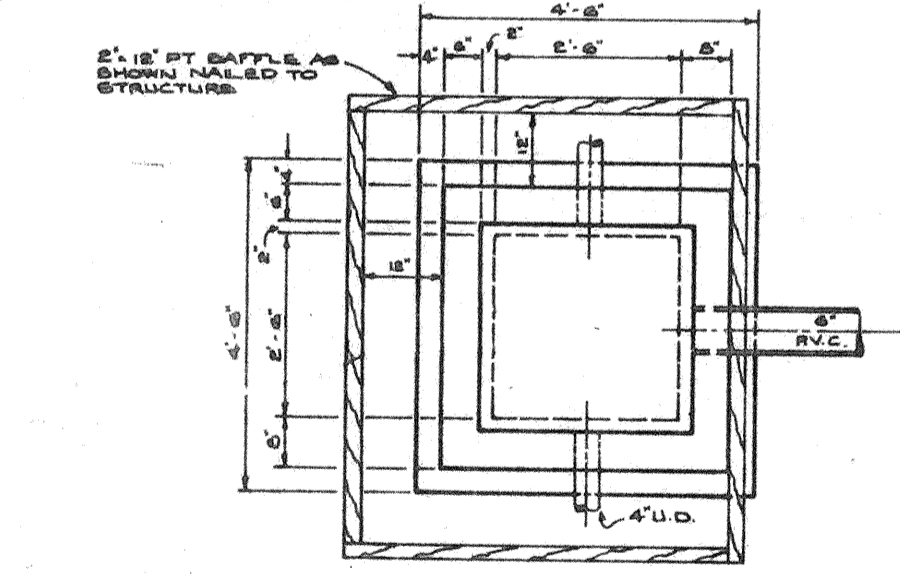
5" OF NON-REINFORCED CONCRETE, 3000 PSI, AT 28 DAYS, SAW CUTS AS REQUIRED (MAXIMUM SPACING OF LONGITUDINAL AND TRANSVERSE JOINTS IS 15'), 3/4" EXPANSION JOINTS MAX. 150" ON CENTER.
 6" COMPACTED SUB-BASE, 98% MODIFIED PROCTOR, MAXIMUM DENSITY AASHTO T-100, LBR 100 MINIMUM.
 6" COMPACTED SHELL BASE, 98% MODIFIED PROCTOR, MAXIMUM DENSITY AASHTO T-100, LBR 40 MINIMUM.

PAVEMENT AND BASE DETAIL

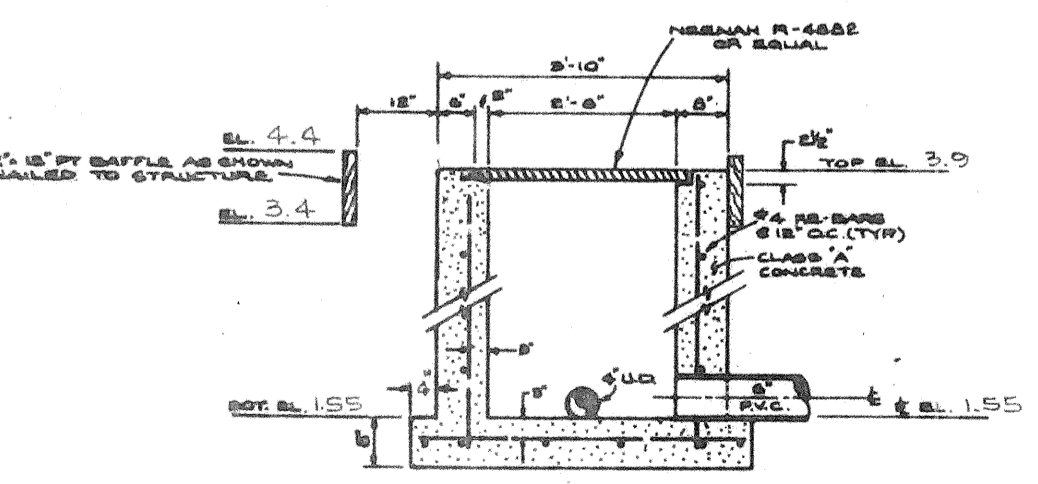


SECTION A-A

1" = 10' HORIZONTAL
 1" = 4' VERTICAL



PLAN



SECTION

OUTLET CONTROL STRUCTURE

N.T.S.

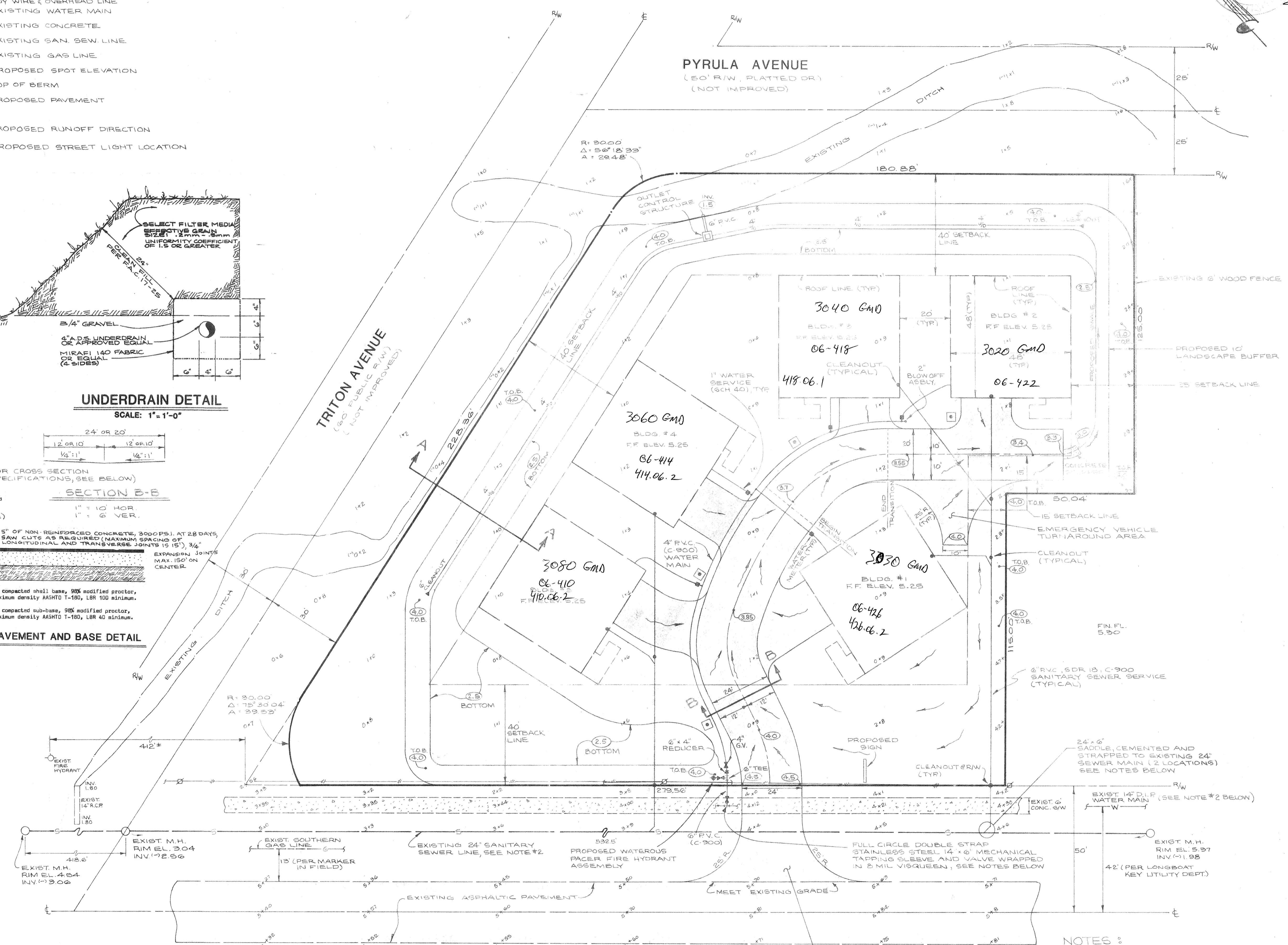
DRAINAGE CALCULATIONS

(SEE ATTACHED REPORT)

EROSION CONTROL

- 1) Contractor to use hay bales, sand/gravel bags, etc. for erosion and sediment control at outflow points along the site perimeter.
- 2) All areas which are stripped of vegetation are to be sodded at critical points and grassed elsewhere as quickly as possible.
- 3) Contractor shall make effort to direct all stormwater through the sediment control areas until the completion of the stormwater pollution abatement system.

LEGAL DESCRIPTION:
 LOTS 1, 2, 3, 4, 5, 31, 32, 33, 34, BLOCK "D" COQUINA BEACH, RECORDED IN PLAT BOOK 1, PAGE 202, PUBLIC RECORDS OF SARASOTA COUNTY, FLORIDA, LESS THE SOUTHWESTERLY 10 FEET FOR STATE ROAD RIGHT-OF-WAY 1.33 ACRES, MORE OR LESS



GULF OF MEXICO DRIVE S. R. 789

PLAN

SCALE: 1" = 20'

FOOT APRON PERMIT REQUIRED CONTRACTOR TO SECURE PERMIT PRIOR TO COMMENCING ANY CONSTRUCTION PAVEMENT SPECIFICATIONS WITHIN FOOT R/W TO BE SAME AS SECTION B-B EXCEPT 6" THICK REINFORCED CONCRETE WITH 6" x 6" 10/10 WWM

NOTES:

1. CONTRACTOR TO CONTACT THE TOWN OF LONGBOAT KEY UTILITY DEPT. PRIOR TO COMMENCING ANY UTILITY WORK.
2. CONTRACTOR TO CALL "CANDY" AND VERIFY LOCATION OF ALL EXISTING UTILITIES.
3. CONTRACTOR TO SUBMIT SHOP DRAWINGS OF TIE-IN METHOD TO BE APPROVED BY THE PLUMBING INSPECTOR OF THE TOWN OF LONGBOAT KEY UTILITY DEPT.

OCT 02 1988

FOR: JOHN BAILEY, 7215 BRIGHTON STREET, SARASOTA, FLORIDA 34243 PH: 355-0452

SITE AND DEVELOPMENT PLAN TRITON COVE CONDOMINIUM TOWN OF LONGBOAT KEY, FLORIDA

STEVEN M. HOUGHTON, P.E., INC. CONSULTING ENGINEER

LTR. DATE

REVISION

SCALE

DATE

DATE FEB., 1988
 DRAWN BY CHD
 CHECKED BY STEVEN M. HOUGHTON, P.E.
 TITLE CONSULTING ENGINEER
 LICENSE NO. 371-1272
 STATE FLA. CERT. NO. 957